

DUMPS ARENA

Enterprise Routing and Switching Professional (JNCIP-ENT)

Juniper JN0-649

Version Demo

Total Demo Questions: 10

Total Premium Questions: 65

Buy Premium PDF

<https://dumpsarena.co>

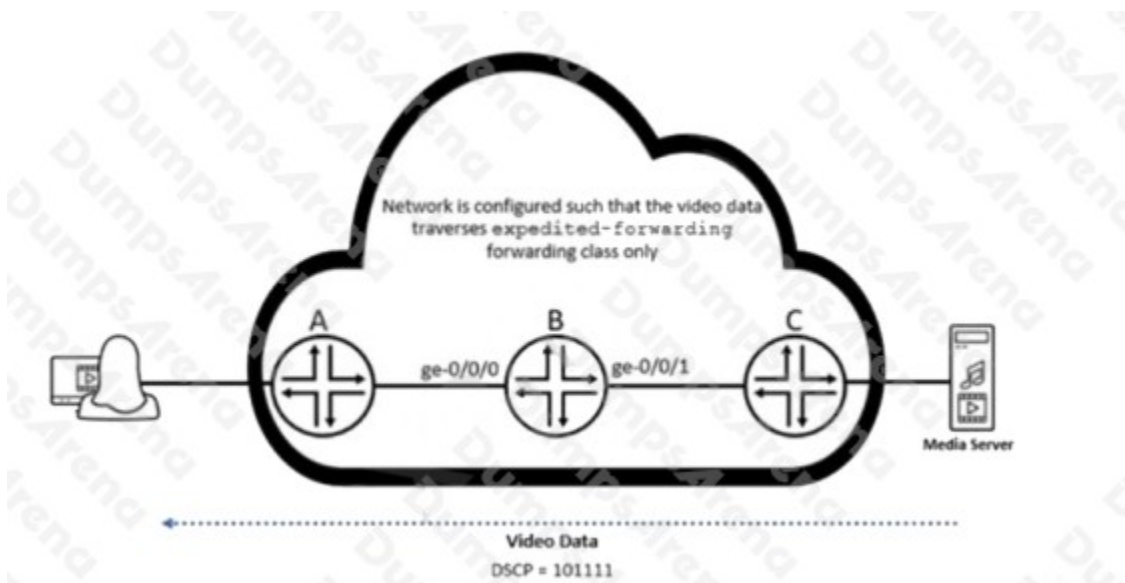
sales@dumpsarena.co

sales@dumpsarena.co
dumpsarena.co

QUESTION NO: 1

A user is attempting to watch a high-definition video being streamed from the media server over the network. However, the user complains that the experienced video quality is poor. While logged on to router B, a Juniper Networks device, you notice that video packets are being dropped.

In this scenario, what would solve this problem?



- A. Adjust the scheduler for the expedited-forwarding forwarding class to support a higher transmit rate.
- B. Adjust the expedited-forwarding BA classifier to router B's ge-0/0/0 interface to support a higher transmit rate.
- C. Adjust the scheduler-map to support a higher transmit rate.
- D. Adjust the expedited-forwarding BA classifier on router B's ge-0/0/1 interface to support a higher transmit rate.

ANSWER: D

QUESTION NO: 2

Your network is multihomed to two ISPs. The BGP sessions are established; however, the ISP peers are not receiving any routes.

Which two statements are correct about troubleshooting your configuration? (Choose two.)

- A. Verify the import policies on your router.
- B. Verify that the BGP routes are active in your routing table.
- C. Verify the export policies on your router.

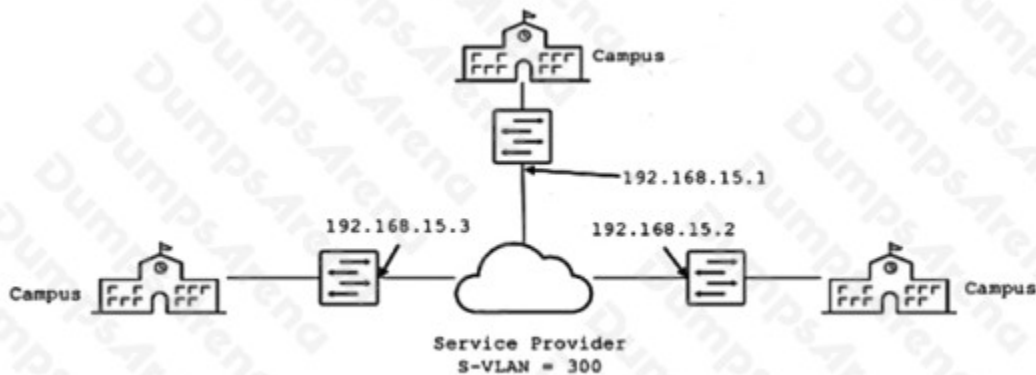
D. Verify that the multihop settings are configured on your router.

ANSWER: C D

QUESTION NO: 3

You want to provide Layer 2 connectivity between campus sites using Ethernet switches through a metro Ethernet service provider who is using Q-in-Q tagging on their network.

Referring to the exhibit, what are two design considerations in this environment? (Choose two.)



- A. VXLAN could be implemented on your network across this service provider network.
- B. Each campus switch shown must have a C-Tag 300 configured.
- C. L2PT is required on the SP network to support the spanning tree protocol.
- D. Each campus switch shown must have S-Tag 300 configured.

ANSWER: C D

QUESTION NO: 4

You recently committed a change to a router to reject OSPF routes sourced from area 10. However, you are still seeing area 10 routes in the routing table.

Referring to the exhibit, which statement is correct?

```
[edit policy-options]
policy-statement advertise-ospf-routes {
  term find-ospf {
    from {
      protocol ospf;
    }
    then {
      accept;
    }
  }
  term reject-area-10 {
    from {
      protocol ospf;
      area 10;
    }
    then {
      reject;
    }
  }
}
```

- A. The OSPF protocol is first matched by find-ospf and accepted.
- B. The routes only timeout after 24 hours.
- C. The routes remain in the table until the device is rebooted.
- D. The routes remain in the table until the routing daemon is restarted.

ANSWER: D

QUESTION NO: 5

You have scheduled maintenance operations for one of the devices in your OSPF network.

Referring to the exhibit, which three statements are correct? (Choose three.)

```
[edit protocols ospf]
user@R1# show
overload;
area 0.0.0.0 {
    interface ge-0/0/0.0;
interface ge-0/0/1.0;
}
```

- A. R1 does not participate in OSPF routing.
- B. Any traffic destined for networks that terminate on R1 will still be forwarded to R1.
- C. The metrics for all transit interfaces on R1 is set to the maximum value of 65,535.
- D. R1 participates in OSPF routing but does not send or receive transit traffic.
- E. R1 does not send or receive transit traffic during the maintenance window even if no alternative paths exist to the given destination.

ANSWER: B C D

QUESTION NO: 6

In OSPF, how does a router ensure that LSAs advertised to a neighboring router are received?

- A. LSA flooding guarantees that all routers will receive them successfully.
- B. LSAs are sent over a TCP connection.
- C. LSAs are acknowledged by the neighboring router.
- D. LSAs are advertised with an acknowledgement bit.

ANSWER: C

QUESTION NO: 7

Which three configuration parameters must match on all switches within the same MSTP region? (Choose three.)

- A. VLAN to instance mapping
- B. revision level
- C. configuration name

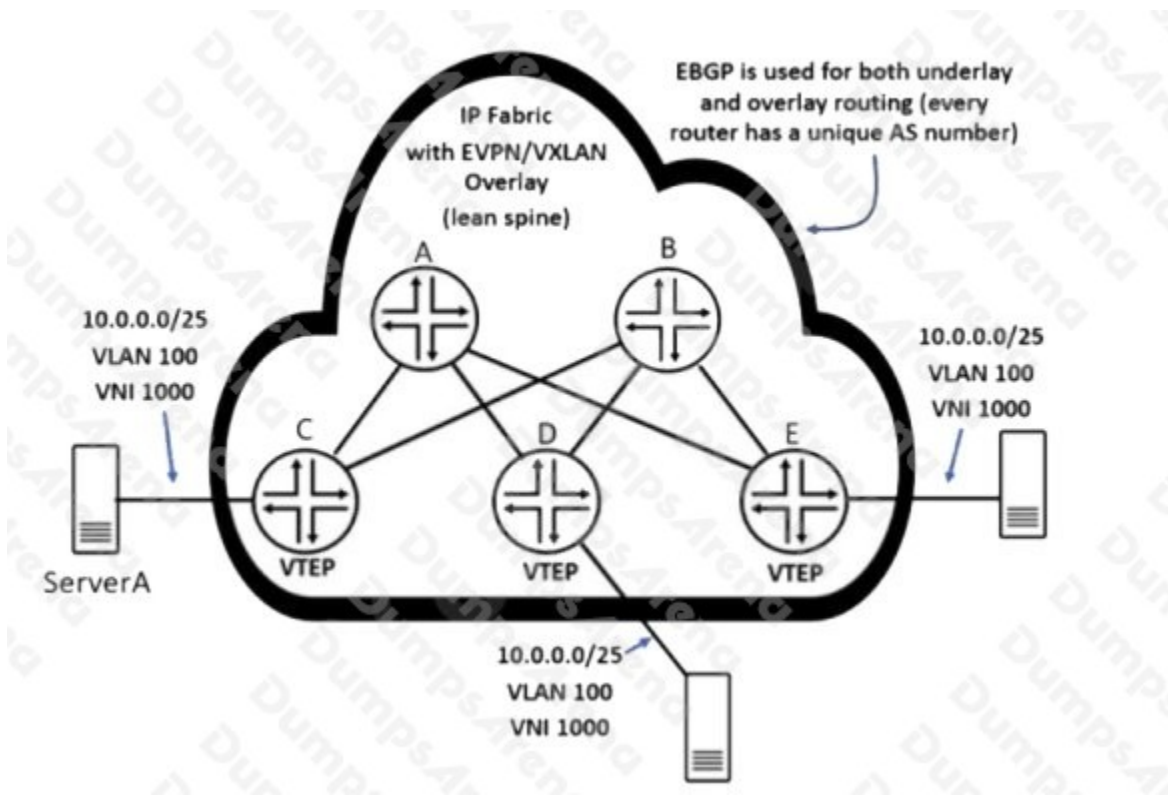
- D. bridge priority
- E. region name

ANSWER: B C E

QUESTION NO: 8

Referring to the exhibit, ServerA sends a single IP packet destined to 10.0.0.127.

Which two statements correctly describe the behavior of the resulting outbound VXLAN packets that contain the original packet destined to 10.0.0.127? (Choose two.)



- A. Router E will replicate and send a copy of the received VXLAN packet to router D.
- B. Router C will send a VXLAN packet destined only to router D and router E.
- C. Router D will not replicate and send a copy of the received VXLAN packet to router E.
- D. Router C will send a single VXLAN packet to one remote VTEP.

ANSWER: A D

QUESTION NO: 9

Your organization has recently acquired another company. You must carry all of the company's existing VLANs across the corporate backbone to the existing branch locations without changing addressing and with minimal configuration.

Which technology will accomplish this task?

- A. Q-in-Q all-in-one bundling
- B. PVLAN isolated VLAN
- C. MVRP registration normal
- D. EVPN-VXLAN anycast gateway

ANSWER: A

QUESTION NO: 10

You are troubleshooting connectivity between an EVPN spine switch configured as a route reflector and a leaf node with an IP address of 10.30.100.6.

Referring to the exhibit, what is the problem?

```
spine1> show configuration protocols bgp
group EVPN_iBGP {
  type internal;
  local-address 10.30.100.3;
  family evpn {
    signaling;
  }
  cluster 10.30.100.3;
  local-as 65200;
  multipath;
  allow 10.30.100.0/24;
  neighbor 10.30.100.4;
}
spine1> show log messages | grep bgp
May 16 21:48:24 spine1 rpd[1768]: BGP_RESET_PENDING_CONNECTION: 10.30.136.2 (External AS 65504): resetting pending active
connection
May 16 23:16:58 spine1 rpd[1768]: bgp_handle_notify:4237: NOTIFICATION received from 10.30.100.5 (Internal AS 65200): code
6 (Cease) subcode 9 (Hard Reset) [code 6 (Cease) subcode 3 (Peer Unconfigured)]
May 16 23:26:23 spine1 rpd[1768]: bgp_process_caps:3844: NOTIFICATION sent to 10.30.100.6 (Internal AS 65200): code 2 (Open
Message Error) subcode 7 (unsupported capability) NP capability afi 1, safi 1 <inet-unicast>
```

- A. The neighbor 10.30.100.3 statement is missing from leaf1's configuration.
- B. The spine node is not configured for the family inet NLRI.
- C. The neighbor 10.30.100.6 statement is missing from spine1's configuration.
- D. The leaf node is not configured for the family evpn NLRI.

ANSWER: B