

DUMPS ARENA

Security, Expert (JNCIE-SEC)

Juniper JPR-934

Version Demo

Total Demo Questions: 10

Total Premium Questions: 61

Buy Premium PDF

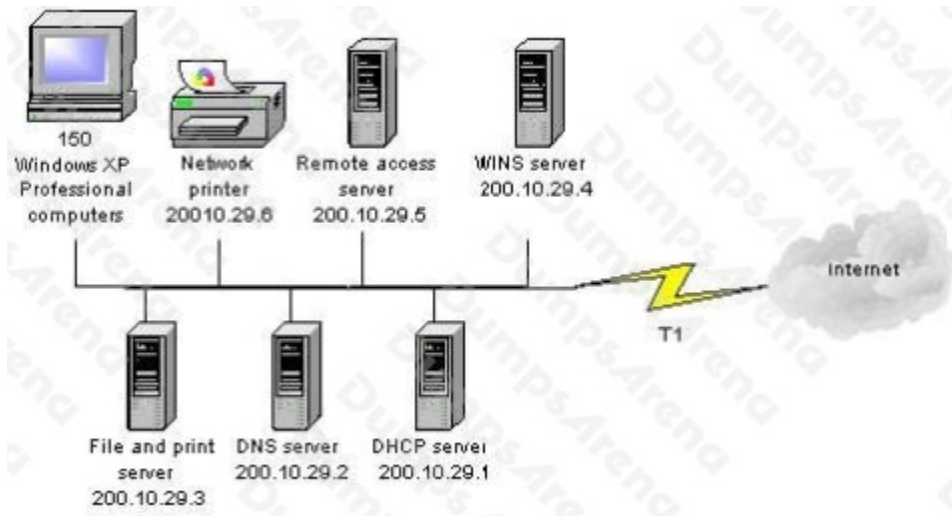
<https://dumpsarena.co>

sales@dumpsarena.co

sales@dumpsarena.co
dumpsarena.co

QUESTION NO: 1

You are one of the administrators for your company's Windows Server network. The relevant portion of the network is presented in the following exhibit.



All servers, client computers and one network print device are currently configured with static IP addresses. The network IP address is 200.10.29.0. A DHCP server has been deployed but has not yet been configured. You must configure a new scope that will provide the existing client computers with IP configurations. The new scope should support an additional 25 new client computers that will be deployed within the next two months.

Which settings should be included in the new DHCP scope? Each correct answer presents part of the solution. (Choose three.)

- A. subnet mask: 255.255.255.0
- B. subnet mask: 255.255.255.128
- C. DHCP scope starting IP address: 200.10.29.7 DHCP scope ending IP address: 200.10.29.254
- D. DHCP scope starting IP address: 200.10.29.1 DHCP scope ending IP address: 200.10.29.254
- E. DHCP scope exclusion range starting IP address: 200.10.29.1 DHCP scope exclusion range ending IP address: 200.10.29.6
- F. DHCP scope exclusion range starting IP address: 200.10.29.1 DHCP scope exclusion range ending IP address: 200.10.29.254

ANSWER: A D E

QUESTION NO: 2

The company consists of an Active Directory domain called ABC.com. All servers on the corporate network run Windows Server.

The network contains a server that runs Internet Authentication Service (IAS) called ABC-SR01. ABC-SR01 also runs the Routing and Remote Access service to provide VPN access to the network for external users. During routine monitoring you discover that an external unauthorized user is trying to access the network through ABC-SR01.

How would you set up ABC-SR01 to log the IP addresses of the remote computers when they attempt to connect to the network using the VPN connection?

- A.** Log the details of the access attempts by the VPN users by using IAS to configure the Authentication requests option enabled in the Remote Access Logging.
- B.** Log the details of the access attempts by the VPN users by configuring the Routing and Remote Access service to log all IPsec connections.
- C.** Log the details of the access attempts by the VPN users by enabling auditing of TCP/IP.sys.
- D.** Log the details of the access attempts by the VPN users by enabling auditing of all Account Logon events on a domain controller.

ANSWER: A

QUESTION NO: 3

The ABC.com network consists of a single Active Directory domain named ABC.com. All servers on the ABC.com network run Windows Server. Your instruction is to set up a child domain named us.ABC.com.

You install Windows Server on a new standalone server named ABC-DC03 and manually assign an IP address. You attempt to run dcpromo to promote ABC-DC03 to a domain controller. You select the new domain in an existing forest option. The wizard prompts you for the network credentials to join the us.ABC.com to the ABC.com forest. You then receive an error message indicating that a domain controller in the ABC.com domain cannot be found.

How can you ensure that ABC-DC03 can be promoted to a domain controller in the us.ABC.com domain?

- A.** By installing the DNS Server service on ABC-DC03.
- B.** By creating a host (A) record for ABC-DC03 on a DNS server in the ABC.com domain.
- C.** By first joining ABC-DC03 to a workgroup named us.ABC.com.
- D.** By having the ABC-DC03 client DNS settings configured to use a DNS server in the ABC.com domain.
- E.** By creating a delegation on a ABC.com DNS server to delegate the us.ABC.com zone to ABC-DC03.

ANSWER: D

QUESTION NO: 4

You are the backup administrator for your company. You are responsible for ensuring that all data on ten files servers are protected against data loss. Normal business hours from 8 A.M. to 5 P.M., Monday through Friday, are observed. Network access is prohibited outside normal business hours.

A member server named File1 contains shared folder accessed by users in the sales department. The disk structure of File1 is shown in the following exhibit:

Volume	Hosts	Disk Size	Available Space
C	System and Boot Files	9 GB	2.54 GB
D	Shared Folders and User Profiles	25 GB	9.8 GB
F	Shared Folders	75 GB	53.35 GB

You have scheduled a daily backup of File1 as shown in the exhibit. (Click the Exhibit(s) button.) Users in the Sales department frequently leave documents open on their desktops when they leave work. These users occasionally request that you restore a previous version of a file from backup. However, some of these files are not included in recent backup sets. You must modify the backup procedures for File1 so that all files, including open documents, will be included in the daily backup. You also want to provide users with the ability to restore their files.

What should you do? (Choose all that apply. Each correct answer presents part of the solution.)

- A. Move all shared user data folders from drive D to drive F.
- B. Move all shared folders user data from drive F to drive D.
- C. Enable Shadow Copies of Shared Folders on drive F.
- D. Enable Volume shadow copy for the scheduled backup job.
- E. Select the Disable volume shadow copy option for the scheduled backup job.
- F. Install the Previous Versions Client software on all Sales department computers.
- G. Create a new daily backup job by using the same settings, but clear the Disable volume shadow copy option.

ANSWER: A C F G

QUESTION NO: 5

You are the network administrator for your company's network. The network consists of two Active Directory domains: lmiweb.com and hr.lmiweb.com. The lmiweb.com domain supports most of the company's user accounts and resources. The hr.lmiweb.com domain contains the user accounts and resources for the company's human resources department.

The company has deployed an extensive 802.11b wireless network. Access points (APs) have been deployed throughout the company to provide users in all departments with wireless connectivity and serve as bridges to the wired LAN. A total of 325 users, including all members of hr.lmiweb.com, have been issued laptops with 802.11bcompliant network adapters. No other computers have wireless connectivity. All wireless LANs have Wired Equivalent Privacy (WEP) enabled to secure these communications.

Human resources users work throughout the company providing employee training and informational seminars. These users require access to the wireless LAN in all company locations. You must ensure that all human resources data is as secure as

possible as it is transmitted across the wireless LAN. Only users with accounts in only specific users/computers groups should be able to access the human resources division's wireless LAN. In addition, users without accounts in this domain should not be able to view or select the LAN from their list of available networks. What should you do? Each correct answer presents part of the solution. (Choose three.)

- A. Configure MAC filtering on each department's wireless LAN.
- B. Configure MAC filtering on the human resources wireless LAN.
- C. Enable Service Set Identifier (SSID) broadcasting on each department's access point.
- D. Configure a unique Service Set Identifier (SSID) for each department's wireless LAN.
- E. Configure a unique Service Set Identifier (SSID) for the human resources wireless LAN.
- F. Enable Service Set Identifier (SSID) broadcasting on all the human resources access points.
- G. Disable Service Set Identifier (SSID) broadcasting on all the human resources access points.

ANSWER: B E G

QUESTION NO: 6

You work as a Network Administrator for ABC.com. The company has a Windows Active Directory-based single domain single forest network. The functional level of the forest is Windows Server. An intranet-based Web site is required to be installed on the network. Two servers are available for installing the application. You are required to accomplish the following tasks: ▀ The Web site should be available all the time for the clients.

- ▀ Both servers should be capable of fulfilling the clients' requests at a time.

You take the following steps:

- ▀ Create a two-node server cluster.
- ▀ Configure one server as an active server and the other as a passive server.

Which of the required tasks will be accomplished by taking these steps?

- A. Both servers will be capable of fulfilling the clients' requests at a time.
- B. None of the tasks will be accomplished.
- C. The Web site will be available all the time for the clients.
- D. Both tasks will be accomplished.

ANSWER: C

QUESTION NO: 7

You have recently hired a new junior administrator to assist you in running the network for a medium-sized manufacturing company. You are explaining to your new assistant that AD objects are assigned security descriptors to allow you to implement access control. You tell your assistant that the security descriptor contains several different components. Which of the following are contained in the security descriptor for an object? (Select all that apply.)

- A. Discretionary access control list
- B. System access control list
- C. Dynamic access control list
- D. Ownership information

ANSWER: A B D

QUESTION NO: 8

The ABC.com network consists of a single Active Directory domain named ABC.com. ABC.com has its headquarters in Chicago and several branch offices at various locations throughout the country. All servers on the ABC.com network run Windows Server.

You are in the process of configuring a VPN connection between the Chicago office and a branch office in Dallas using Windows Server computers running Routing and Remote Access (RRAS).

A ABC.com written security policy states that the requirements below must be met:

- Data transmitted over the VPN must be encrypted with end to end encryption.
- The VPN connection authentication should be at the computer level rather than at user level and with no credential information transmitted over the internet. How should you configure the VPN? (Choose two.)

- A. Use a PPTP connection.
- B. Use EAP-TLS authentication.
- C. Use a PPP connection.
- D. Use MS-CHAP v2 authentication.
- E. Use MS-CHAP authentication.
- F. Use PAP authentication.
- G. Use an L2TP/IPSec connection.

ANSWER: B G

QUESTION NO: 9

One of your hosts in multiple-host NLB cluster requires maintenance. The cluster is heavily used and central to the profitability of your company. You want to bring the node down for service in the least disruptive way. How should you accomplish this goal?

- A. Use the drainstop option on the host needing maintenance.
- B. Use the drainstop option on all the hosts in the cluster not needing maintenance.
- C. Use the suspend option on the host needing maintenance.
- D. Use the suspend option on all the hosts in the cluster not needing maintenance.

ANSWER: A

QUESTION NO: 10

You have recently purchased a new single-CPU, Intel Xeon-based server. This hardware will be used to run a multithreaded CPU-intensive application. How can you ensure that the application performs at its best on the hardware provided?

- A. Turn on hyperthreading.
- B. Add a second CPU.
- C. Boost the processing priority of the applications threads.
- D. Disable hyperthreading.

ANSWER: A