

# DUMPS ARENA

## Configuring and Operating Windows Virtual Desktop on Microsoft Azure

Microsoft AZ-140

Version Demo

Total Demo Questions: 15

Total Premium Questions: 237

Buy Premium PDF

<https://dumpsarena.co>

[sales@dumpsarena.co](mailto:sales@dumpsarena.co)

sales@dumpsarena.co  
dumpsarena.co

## Topic Break Down

<b>Topic</b>	<b>No. of Questions</b>
<b>Topic 1, New Update</b>	<b>120</b>
<b>Topic 2, Case Study 1</b>	<b>3</b>
<b>Topic 3, Case Study 2</b>	<b>3</b>
<b>Topic 4, Case Study 3</b>	<b>2</b>
<b>Topic 5, Case Study 4</b>	<b>5</b>
<b>Topic 6, Case Study 5</b>	<b>2</b>
<b>Topic 7, Case Study 6</b>	<b>2</b>
<b>Topic 8, Mixed Questions</b>	<b>100</b>
<b>Total</b>	<b>237</b>

**QUESTION NO: 1**

You have an Azure Active Directory Domain Services (Azure AD DS) managed domain named contoso.com.

You create an Azure Virtual Desktop host pool named Pool1. You assign the Virtual Machine Contributor role for the Azure subscription to a user named Admin1.

You need to ensure that Admin1 can add session hosts to Pool1. The solution must use the principle of least privilege.

Which two actions should you perform? Each correct answer presents part of the solution.

NOTE: Each correct selection is worth one point.

- A. Assign Admin1 the Desktop Virtualization Host Pool Contributor role for Pool1
- B. Assign Admin1 the Desktop Virtualization Session Host Operator role for Pool1
- C. Add Admin1 to the AAD DC Administrators group
- D. Assign a Microsoft 365 Enterprise E3 license to Admin1
- E. Generate a registration token

**ANSWER: B E****Explanation:**

Reference:

<https://docs.microsoft.com/en-us/azure/virtual-desktop/rbac>

**QUESTION NO: 2**

You have an Azure subscription that contains the resources shown in the following table.

Name	Description
AVDVM-0	A virtual machine used in a pooled virtual machine set
share1	An Azure file share that stores FSLogix profile containers
Image1	A custom Windows 10 image in a shared image gallery
Image2	A custom Windows Server 2019 image stored in Azure Blob storage

You create a recovery services vault named Vault1.

Which resources can you back up using Azure Backup to Vault1?

- A. AVDVM-0 only
- B. AVDVM-0 and share1 only
- C. AVDVM-0, Image1, and Image2 only
- D. AVDVM-0, share1, and Image1 only
- E. AVDVM-0, share1, Image1, and Image2

**ANSWER: E**

**Explanation:**

Reference:

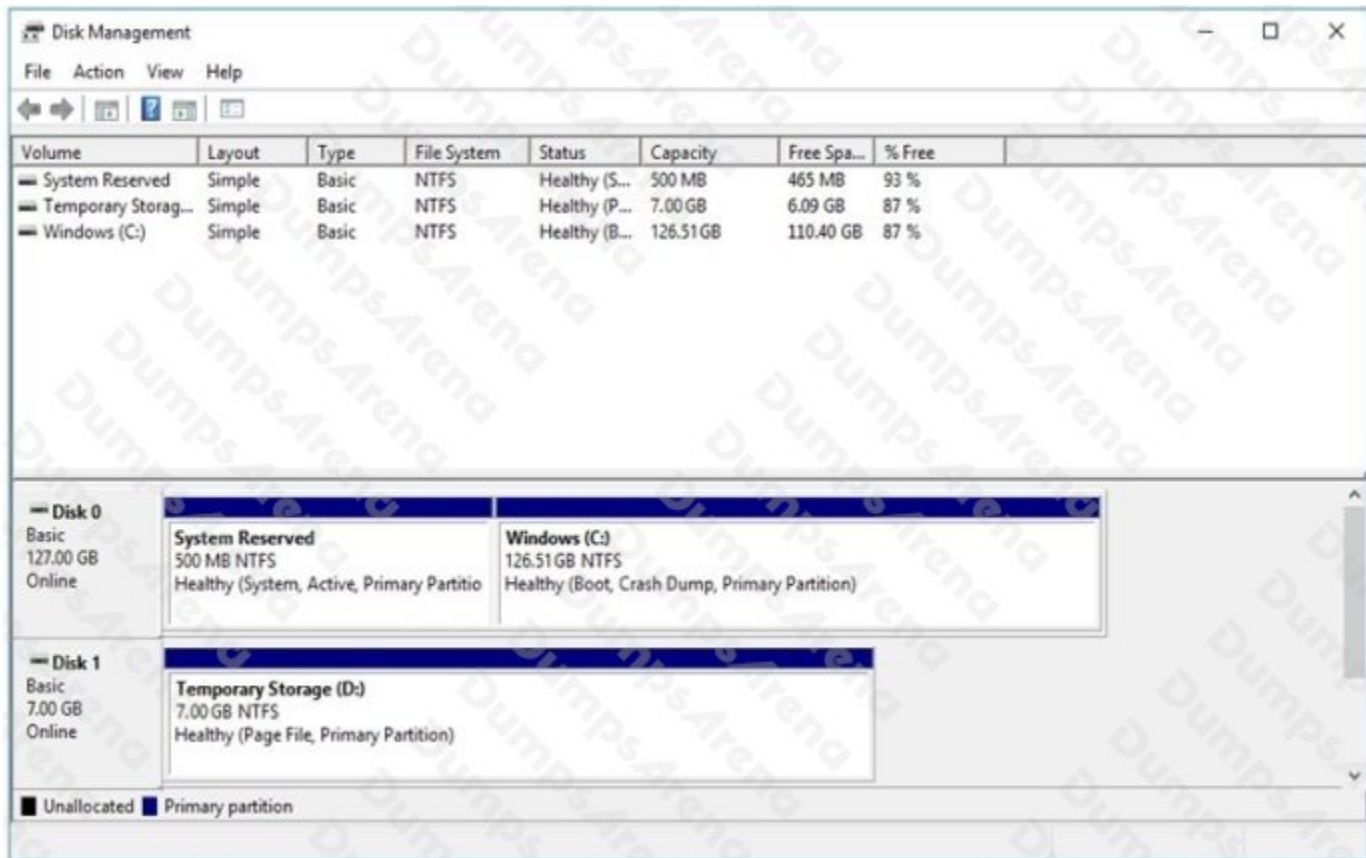
<https://www.techrepublic.com/article/how-to-create-a-backup-recovery-service-with-microsoft-azure/>

### **QUESTION NO: 3 - (DRAG DROP)**

DRAG DROP

You have a Windows Virtual Desktop deployment.

You have a session host named Host1 that has the disk layout shown in the exhibit. (Click the Exhibit tab.)



You plan to deploy an app that must be installed on

D. The app requires 500 GB of disk space.

You need to add a new data disk that will be assigned the drive letter

D. The solution must maintain the current performance of Host1.

Which four actions should you perform in sequence? To answer, move the appropriate actions from the list of actions to the answer area and arrange them in the correct order.

**Select and Place:**

**Actions**

- Move the page file to drive C.
- Move the page file to Temporary Storage.
- Change the drive letter of Temporary Storage (D:).
- Mark Temporary Storage (D:) as **Active**.
- Add the new disk and assign drive D.
- Move the page file to System Reserved.

**Answer Area**

- ⏪
- ⏩
- ⏴
- ⏵

**ANSWER:**

**Actions**

- Move the page file to drive C.
- Move the page file to Temporary Storage.
- Change the drive letter of Temporary Storage (D:).
- Mark Temporary Storage (D:) as **Active**.
- Add the new disk and assign drive D.
- Move the page file to System Reserved.

**Answer Area**

- Move the page file to drive C.
- Change the drive letter of Temporary Storage (D:).
- ⏪ Add the new disk and assign drive D. ⏴
- ⏩ Move the page file to Temporary Storage. ⏵

**Explanation:**

Reference: <https://www.azurecorner.com/change-temporary-drive-azure-vm-use-d-persistent-data-disks/>

**QUESTION NO: 4 - (HOTSPOT)**

**HOTSPOT**

You have a Windows Virtual Desktop deployment.

You need to ensure that all the connections to the managed resources in the host pool require multi-factor authentication (MFA).

Which two settings should you modify in a conditional access policy? To answer, select the appropriate options in the answer area.

NOTE: Each correct selection is worth one point.

Hot Area:

# New

Conditional access policy

Control user access based on conditional access policy to bring signals together, to make decisions, and enforce organizational policies. [Learn more](#)

Name \*

 ✓

## Assignments

Users and groups ⓘ >  
All users

Cloud apps or actions ⓘ >  
No cloud apps or actions selected

Conditions ⓘ >  
0 conditions selected

## Access controls

Grant ⓘ >  
0 conditions selected

Session ⓘ >  
0 conditions selected

ANSWER:

# New

Conditional access policy

Control user access based on conditional access policy to bring signals together, to make decisions, and enforce organizational policies. [Learn more](#)

Name \*

 ✓

## Assignments

Users and groups ⓘ >  
All users

Cloud apps or actions ⓘ >  
No cloud apps or actions selected

Conditions ⓘ >  
0 conditions selected

## Access controls

Grant ⓘ >  
0 conditions selected

Session ⓘ >  
0 conditions selected

**Explanation:**

Reference: <https://docs.microsoft.com/en-us/azure/active-directory/authentication/tutorial-enable-azure-mfa>

**QUESTION NO: 5**

Note: This question is part of a series of questions that present the same scenario. Each question in the series contains a unique solution that might meet the stated goals. Some question sets might have more than one correct solution, while others might not have a correct solution.

After you answer a question in this section, you will NOT be able to return to it. As a result, these questions will not appear in the review screen.

You have an Azure Virtual Desktop host pool named Pool1 that is integrated with an Azure Active Directory Domain Services (Azure AD DS) managed domain.

You need to configure idle session timeout settings for users that connect to the session hosts in Pool1.

Solution: From the Azure portal, you modify the Advanced settings in the RDP Properties of Pool1.

Does this meet the goal?

- A. Yes
- B. No

**ANSWER: B****QUESTION NO: 6**

You have an Azure Virtual Desktop host pool named Pool1. Pool1 contains session hosts that have a third-party application named App1. App1 is published by using a RemoteApp group.

A new MSI-based version of App1 is installed each month to each host. The name of the executable file is different for each version of App1.

You need to automate the process of making a new version of App1 available via RemoteApp. The process must ensure that the user experience remains the same when launching the application from the Windows Desktop client.

Which two cmdlets should you run? Each correct answer presents part of the solution.

NOTE: Each correct selection is worth one point.

- A. Remove-AzWvdApplication
- B. New-AzWvdApplication
- C. New-AzWvdApplicationGroup
- D. New-AzWvdMsixPackage
- E. New-AzRoleAssignment

F. Remove-AzWvdMsixPackage

**ANSWER: B D**

**Explanation:**

Reference: <https://docs.microsoft.com/en-us/azure/virtual-desktop/what-is-app-attach> <https://docs.microsoft.com/en-us/powershell/module/az.desktopvirtualization/new-azwvdapplication?view=azps-6.4.0>

**QUESTION NO: 7**

You have a Azure Virtual Desktop deployment that uses Microsoft 355 cloud services including Microsoft Teams.

Users use the Remote Desktop client to connect to the deployment from computers that run Windows 10

You need to support audio and video in Azure Virtual Desktop and provide the users with access to Microsoft Teams calling and meeting features.

Which three actions should you perform? Each correct answer presents part of the solution.

NOTE: Each correct selection is worth one point.

- A. Install the Microsoft Teams WebSocket Service on the Windows 10 computers
- B. Configure the IsVWDEnvironment registry key on the Windows 10 computers
- C. Configure the isWVDEnvironment registry key on the virtual machines
- D. Install the Microsoft Teams desktop app on the Windows 10 computers
- E. Install the Microsoft Teams WebSocket Service on the virtual machines
- F. Install the Microsoft Teams desktop app on the virtual machines

**ANSWER: B D E**

**Explanation:**

Reference:

<https://docs.microsoft.com/en-us/azure/virtual-desktop/teams-on-avd>

**QUESTION NO: 8**

You have a Windows Virtual Desktop host pool named Pool1 and an Azure Storage account named Storage1.

Storage1 stores FSLogix profile containers in a share folder named share1.

You create a new group named Group1. You provide Group1 with permission to sign in to Pool1.

You need to ensure that the members of Group1 can store the FSLogix profile containers in share1. The solution must use the principle of least privilege.

Which two privileges should you assign to Group1? Each correct answer presents part of the solution.

NOTE: Each correct selection is worth one point.

- A. the Storage Blob Data Contributor role for storage1
- B. the List folder / read data NTFS permissions for share1
- C. the Modify NTFS permissions for share1
- D. the Storage File Data SMB Share Reader role for storage1
- E. the Storage File Data SMB Share Elevated Contributor role for storage1
- F. the Storage File Data SMB Share Contributor role for storage1

**ANSWER: C F**

**Explanation:**

Reference:

<https://docs.microsoft.com/en-us/azure/virtual-desktop/create-file-share>

### QUESTION NO: 9

You have a Azure Virtual Desktop deployment.

You need to monitor the deployment of using the Azure Virtual Desktop Insights solution in Azure Monitor.

What should you use as the Diagnostic settings destination for the host pool?

- A. Event hub
- B. Log Analytics workspace
- C. Storage account

**ANSWER: B**

**Explanation:**

Reference:

<https://docs.microsoft.com/en-us/azure/virtual-desktop/azure-monitor>

### QUESTION NO: 10

You have an Azure Virtual Desktop deployment.

You plan to deploy Update Management to manage automated updates for server-based session hosts.

You need to configure the prerequisites for Update Management.

Which two actions should you perform? Each correct answer presents part of the solution.

NOTE: Each correct selection is worth one point.

- A. Create a Log Analytics workspace.
- B. Create an Azure Automation account.
- C. Create an Azure Service Health alert rule.
- D. Enable the Application Insights Agent.
- E. Configure Azure Network Watcher.

**ANSWER: A B**

**Explanation:**

<https://learn.microsoft.com/en-us/azure/architecture/hybrid/azure-update-mgmt>

### QUESTION NO: 11 - (HOTSPOT)

-You have an Azure Virtual Desktop deployment and two Azure Active Directory groups named Group1 and Group2. You create two Conditional Access policies named Policy1 and Policy2.

Policy1 is assigned to Group1. Policy2 is assigned to Group2. Both policies include Azure Virtual Desktop as a cloud app.

You need to meet the following requirements:

- The users in Group1 must be prompted for multi-factor authentication (MFA) when they connect to Azure Virtual Desktop.
- The users in Group2 must reauthenticate every eight hours while they are connected to Azure Virtual Desktop.

Which settings should you configure in Policy1 and Policy2? To answer, select the appropriate options in the answer area.

NOTE: Each correct selection is worth one point.

Answer Area

Policy1:  ▼  
Access controls: Grant  
Access controls: Session  
Assignments: Conditions: Sign-in risk  
Assignments: Conditions: User risk

Policy2:  ▼  
Access controls: Grant  
Access controls: Session  
Assignments: Conditions: Sign-in risk  
Assignments: Conditions: User risk

ANSWER:

Answer Area

Policy1:  ▼  
Access controls: Grant  
Access controls: Session  
Assignments: Conditions: Sign-in risk  
Assignments: Conditions: User risk

Policy2:  ▼  
Access controls: Grant  
Access controls: Session  
Assignments: Conditions: Sign-in risk  
Assignments: Conditions: User risk

Explanation:

**Answer Area**

Policy1:

Policy2:

**QUESTION NO: 12**

You deploy an Azure Virtual Desktop host pool named Pool1.

You have an Azure Storage account named store1 that stores FSLogix profile containers in a share named profiles.

You need to configure the path to the storage containers for the session hosts.

Which path should you use?

- A. \\store1.blob.core.windows.net\profiles
- B. https://store1.file.core.windows.net/profiles
- C. \\store1.file.core.windows.net\profiles
- D. https://store1.blob.core.windows.net/profiles

**ANSWER: C****Explanation:**

Reference: <https://docs.microsoft.com/en-us/azure/virtual-desktop/create-profile-container-adds>

**QUESTION NO: 13**

You plan to implement the FSLogix profile containers for the Seattle office.

Which storage account should you use?

- A. storage2
- B. storage4
- C. storage3
- D. storage1

**ANSWER: A**

**Explanation:**

Reference:

<https://docs.microsoft.com/en-us/azure/virtual-desktop/store-fslogix-profile>

**QUESTION NO: 14**

You have an Azure subscription that contains the resources shown in the following table.

Name	Description
AVDVM-0	A virtual machine used in a pooled virtual machine set
share1	An Azure file share that stores FSLogix profile containers
Image1	A custom Windows 10 image in a shared image gallery
Image2	A custom Windows Server 2019 image stored in Azure Blob storage

You create a recovery services vault named Vault1.

Which resources can you back up using Azure Backup to Vault1?

- A. AVDVM-0 only
- B. AVDVM-0 and share1 only
- C. AVDVM-0, Image1 and Image2 only
- D. AVDVM-0, share1 and Image1 only
- E. AVDVM-0, share1, Image1 and Image2

**ANSWER: B**

**Explanation:**

<https://docs.microsoft.com/en-us/azure/backup/backup-overview#what-can-i-back-up> Operational backup of blobs is a local backup solution. So the backup data isn't transferred to the Backup vault

## QUESTION NO: 15 - (DRAG DROP)

DRAG DROP

You have a Windows Virtual Desktop host pool named Pool1. Pool1 contains session hosts that use FSLogix profile containers hosted in Azure NetApp Files volumes.

You need to back up profile files by using snapshots.

Which three actions should you perform in sequence? To answer, move the appropriate actions from the list of actions to the answer area and arrange them in the correct order.

Select and Place:

### Actions

- Create an Azure NetApp account.
- Register the NetApp Resource Provider.
- Register the Azure NetApp snapshot policy feature.
- Create a snapshot policy.
- Apply a snapshot policy to a volume.

### Answer Area

- ⏪
- ⏩
- ⏴
- ⏵

## ANSWER:

### Actions

- Create an Azure NetApp account.
- Register the NetApp Resource Provider.
- Register the Azure NetApp snapshot policy feature.
- Create a snapshot policy.
- Apply a snapshot policy to a volume.

### Answer Area

- Register the Azure NetApp snapshot policy feature.
- ⏪ Create a snapshot policy. ⏴
- ⏩ Apply a snapshot policy to a volume. ⏵

Explanation:

Reference: <https://docs.microsoft.com/en-us/azure/azure-netapp-files/azure-netapp-files-manage-snapshots> Monitor and Maintain a Windows Virtual Desktop Infrastructure