

# DUMPS ARENA

**HCNA (Huawei Certified Network Associate)**

**Huawei H12-211**

**Version Demo**

**Total Demo Questions: 20**

**Total Premium Questions: 413**

**Buy Premium PDF**

**<https://dumpsarena.co>**

**[sales@dumpsarena.co](mailto:sales@dumpsarena.co)**

**[sales@dumpsarena.co](mailto:sales@dumpsarena.co)**  
**[dumpsarena.co](https://dumpsarena.co)**

**QUESTION NO: 1**

Which of the following methods are supported by VRP platform to configure the router? (Choose three)

- A. Through the Console port
- B. Through Telnet
- C. Through the AUX port
- D. Through FTP

**ANSWER: A B C****QUESTION NO: 2**

Which of the following statements about gratuitous ARP packets are true? (Choose two)

- A. A system can determine whether conflicting IP addresses are used by sending a gratuitous ARP packet
- B. A gratuitous ARP packet uses the same format as an ARP request packet.
- C. A gratuitous ARP packet can help to update an IP address.
- D. A gratuitous ARP packet uses the same format as an ARP reply packet.

**ANSWER: A B****QUESTION NO: 3**

```
[RTA]acl 2002
[RTA-acl-basic-2002]rule permit source 20.1.1.1 0
[RTA-acl-basic-2002]rule permit source 30.1.1.1 0
```

Refer to the configuration output. A network administrator configured the ACL on router RTA, as shown.

Which of the following statements regarding the rule order are correct? (Choose two).

- A. The rule-number of the first rule is 1
- B. The rule-number of the first rule is 5
- C. The rule-number of the second rule is 2

D. The rule-number of the second rule is 10

**ANSWER: B D**

**QUESTION NO: 4**

If AAA authentication is used on Huawei devices and the remote server does not respond, the authentication can be performed on network devices.

- A. True
- B. False

**ANSWER: A**

**QUESTION NO: 5**

When the host accesses web service of the server, the value of the "Protocol" field at the network layer is 6.

- A. True
- B. False

**ANSWER: A**

**QUESTION NO: 6**

The administrator cannot use telnet to manage the AR2200. The administrator is able to verify connectivity to the router and has been informed that other administrators have no difficulties using telnet.

Which statements describe the possible reasons for this problem? (Choose all that apply.)

- A. The user's status has been blocked
- B. The user's privilege level has been changed to 0.
- C. The user has been deleted.
- D. The telnet service in the AR2200 router has been disabled.

**ANSWER: A C**

**QUESTION NO: 7**

Which of the following statements are true about ACL deployment on Huawei devices? (Choose all that apply)

- A. ACL can only be used in the outbound direction of an interface
- B. The same ACL can be used on multiple interfaces
- C. The ACL rules can only be configured in the following sequence: 10, 20, 30...
- D. ACLs cannot be used to filter OSPF traffic because OSPF does not use UDP to encapsulate packets
- E. ACLs can be used to match with the TCP/UDP port IDs of packets and to designate the port ID range

**ANSWER: B E****QUESTION NO: 8**

The following shows a command output on a device. Which of the following statements are true? (Choose three.)

```
<Huawei>display interface GigabitEthernet 0/0/0
GigabitEthernet0/0/0 current state : UP
Line protocol current state : UP
Route Port, The Maximum Transmit Unit is 1000
Internet Address is 10.0.12.2/24
IP Sending Frames' Format is PKTFMT_ETHNT_2, Hardware address is 00e0-fc22-4fff
Port Mode: FORCE COPPER
Speed : 100, Loopback: NONE
Duplex: FULL, Negotiation: DISABLE
Mdi : AUTO
Last 300 seconds input rate 24 bits/sec, 0 packets/sec
Last 300 seconds output rate 24 bits/sec, 0 packets/sec
```

- A. The IP address of the interface is 10.0.12.2/24.
- B. The MTU value of the interface is 1000.
- C. The working rate of the interface is 1 Gbit/s.
- D. The MAC address of the interface is 00e0-fc22-4fff.

**ANSWER: A B D**

**QUESTION NO: 9**

A network administrator uses the ping command to check for points of failure in the network. Which protocols will be used during this process? (Choose two)

- A. ICMP
- B. TCP
- C. ARP
- D. UDP

**ANSWER: A C****QUESTION NO: 10**

Which of the following problems are caused by routing loops? (Choose three)

- A. Slow convergence
- B. Packets circulate between routers
- C. Router restarting
- D. Inconsistency of routing information

**ANSWER: A B D****QUESTION NO: 11**

Segment routing-traffic engineering (SR-TE) is a new TE tunneling technology that uses SR as a control protocol. All nodes of an SR-TE tunnel, including the ingress and transit nodes, must be aware of the tunnel and complete label distribution and forwarding.

- A. True
- B. False

**ANSWER: A****QUESTION NO: 12**

If Frame Relay implements dynamic address mapping for the PVC, which protocol will be used?

- A. LMI protocol
- B. ARP protocol
- C. RARP protocol
- D. InARP protocol

**ANSWER: D**

**QUESTION NO: 13**

Refer to the graphic, which of the following statements is true about OSPF topology and configuration?



```
[R1]interface GigabitEthernet0/0/0
[R1-GigabitEthernet0/0/0]ip address 100.1.1.1 255.255.255.0
[R1-GigabitEthernet0/0/0]ospf network-type p2p
[R1-GigabitEthernet0/0/0]ospf dr-priority 100
[R1-GigabitEthernet0/0/0]ospf timer hello 20
[R1]ospf 1
[R1-ospf-1]area 0.0.0.0
[R1-ospf-1-area-0.0.0.0]network 100.1.1.1 0.0.0.0
#
[R2]interface GigabitEthernet0/0/0
[R2-GigabitEthernet0/0/0]ip address 100.1.1.2 255.255.255.0
[R2]ospf 1
[R2-ospf-1] area 0.0.0.0
[R2-ospf-1-area-0.0.0.0]network 100.1.1.2 0.0.0.0
```

- A. A stable OSPF neighbor relationship can be set up between R1 and R2.
- B. After the default network type of the interface on R1 is restored to broadcast, a stable OSPF neighbor relationship can be set up between R1 and R2.
- C. After the default network type of the interface on R1 is restored to broadcast and the hello packet sending interval is changed to 10s, a stable OSPF neighbor relationship can be set up between R1 and R2.

D. Compared with R1, R2 is more likely to become the DR because the DR priority of the interface on R2 is lower than that of R1.

**ANSWER: C**

**QUESTION NO: 14**

What is the number range of a basic ACL?

- A. 2000-2999
- B. 3000-3999
- C. 4000-4999
- D. 6000-6031

**ANSWER: A**

**QUESTION NO: 15**

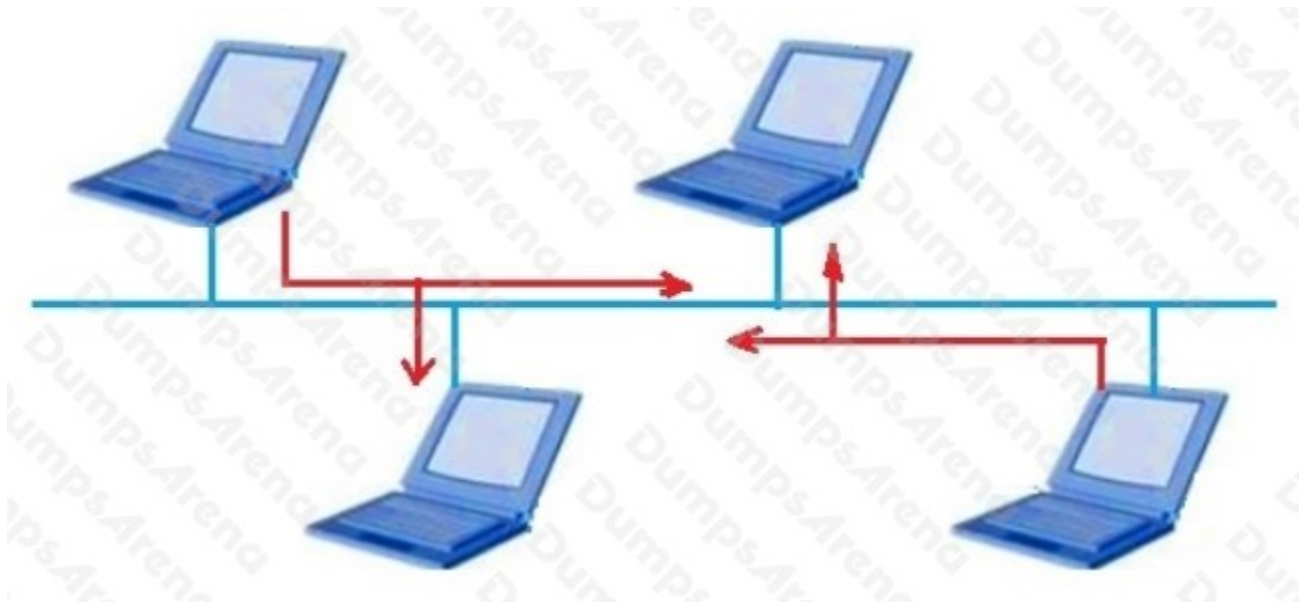
Which of the following statements regarding Designated Routers in OSPF are correct? (Choose three)

- A. DR is elected by all the routers in the same network segment.
- B. If the priorities of two routers are different, the router with the lower priority will be elected as DR.
- C. If the priorities of two routers are equal, the router with the higher Router ID will be elected as DR.
- D. DR and BDR must be adjacent.

**ANSWER: A C D**

**QUESTION NO: 16**

The network administrator wants to improve the performance of network transmission, what steps can the administrator take? (Choose two)



- A. Change the work mode to full duplex of each end station.
- B. Link the end stations together using a switch.
- C. Change the work mode to half duplex of each end station.
- D. Link the end stations together using a hub.

**ANSWER: A B**

#### QUESTION NO: 17

After a device is reset, an interface card is hot swapped, or an interface card is reset, the saved MAC address entries on the device or interface card are not lost.

- A. True
- B. False

**ANSWER: B**

#### QUESTION NO: 18

What is the destination IP address of DHCP Discover packets?

- A. 127.0.0.1
- B. 224.0.0.1

- C. 224.0.0.2
- D. 255.255.255.255

**ANSWER: D**

**QUESTION NO: 19**

The administrator uses the ping command on the host to test connectivity to the website www.huawei.com.

The command line shows a request time out. The administrator displays the ARP entries for the host.

Which entry will be found in the ARP cache table of the host?

- A. The MAC address of the destination www.huawei.com will exist in the ARP cache.
- B. The MAC address of the switch will exist in the ARP cache.
- C. The IP address of the destination www.huawei.com will exist in the ARP cache.
- D. The MAC address of router interface G0/0/0, will exist in the ARP cache.

**ANSWER: D**

**QUESTION NO: 20**

FTP may be used to upgrade a router's VRP image.

Which of the following transmission modes should be used to achieve this?

- A. binary mode
- B. ASCII mode
- C. byte mode
- D. letter mode

**ANSWER: A**