

# DUMPS ARENA

## Tableau Desktop Specialist Exam

Tableau Desktop-Specialist

Version Demo

Total Demo Questions: 10

Total Premium Questions: 151

Buy Premium PDF

<https://dumpsarena.co>

[sales@dumpsarena.co](mailto:sales@dumpsarena.co)

[sales@dumpsarena.co](mailto:sales@dumpsarena.co)  
[dumpsarena.co](https://dumpsarena.co)

**QUESTION NO: 1**

True or False: LEFT JOIN returns all rows from the left table, with the matching rows in the right table

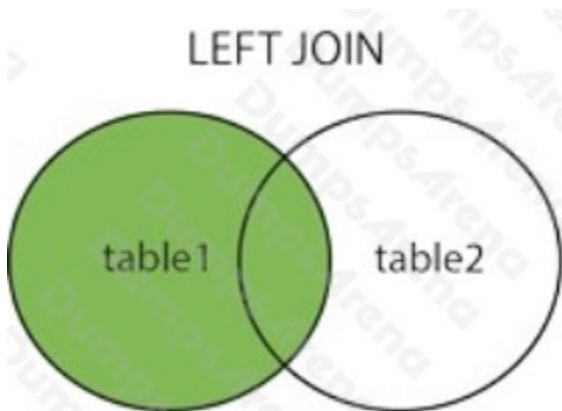
- A. True
- B. False

**ANSWER: A****Explanation:**

:

This is true, indeed!

The LEFT JOIN keyword returns all records from the left table (table1), and the matched records from the right table (table2). The result is NULL from the right side, if there is no match.



Reference: [https://www.w3schools.com/sql/sql\\_join\\_left.asp](https://www.w3schools.com/sql/sql_join_left.asp)

**QUESTION NO: 2**

Which of the following can you add a reference line to?

- A. Groups
- B. Calculated Fields
- C. Measures
- D. Dimensions

**ANSWER: B C**

**Explanation:**

:

You can add reference lines, bands, distributions, or (in Tableau Desktop but not on the web) box plots to any continuous axis in the view.

Reference Lines - You can add a reference line at a constant or computed value on the axis. Computed values can be based on a specified field. You can also include confidence intervals with a reference line.



Reference: [https://help.tableau.com/current/pro/desktop/en-us/reference\\_lines.htm](https://help.tableau.com/current/pro/desktop/en-us/reference_lines.htm)

**QUESTION NO: 3**

Is it possible to add both a Dashboard and a Worksheet at the same time to a Story Point in Tableau?

A. Yes

B. No

**ANSWER: B**

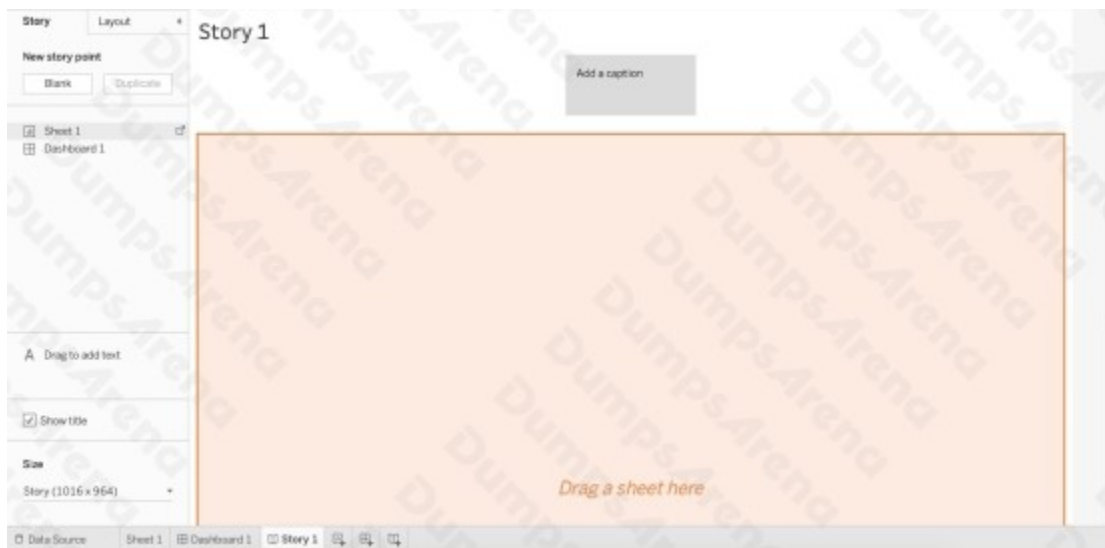
**Explanation:**

:

This is a tricky question. We are talking about story POINTS, and not entire stories in the question.

To create a story, lets say I have a blank story with 1 dashboard and 1 worksheet.

I can simply drag the dashboard into the view to create a new story point.



Now, if I try to adjust the worksheet beside it in this same view, I cannot. See below:



The only option available is to replace the existing view. Therefore, the answer is NO since they both cannot be added.

Read more about stories in Tableau: [https://help.tableau.com/current/pro/desktop/enus/story\\_create.htm](https://help.tableau.com/current/pro/desktop/enus/story_create.htm)

**QUESTION NO: 4**

Which of the following are valid ways to copy a worksheet visualisation as an image?

- A. By simply clicking Control + V on the keyboard
- B. By clicking on Worksheet in the Tableau Main Menu above, and choosing Copy->Image
- C. Using the Marks shelf and choosing Copy->Image
- D. By right clicking on the worksheet visualisation and selecting Copy->Image

**ANSWER: B D**

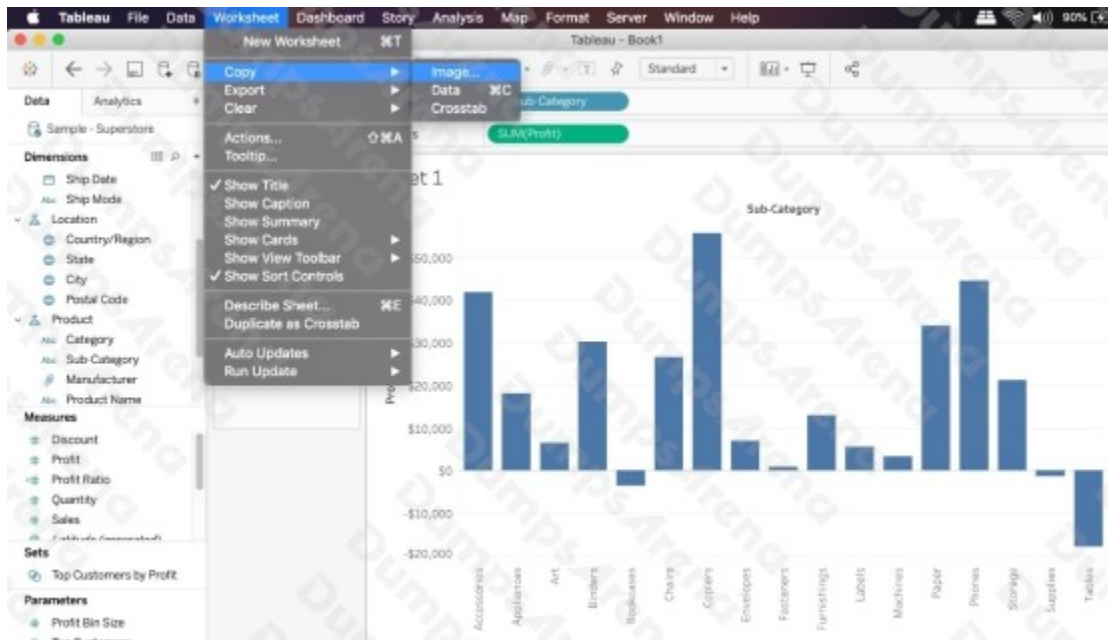
**Explanation:**

:

The following are 2 correct ways to copy the worksheet visualisation as an image:



AND



Reference: [https://help.tableau.com/current/pro/desktop/en-us/save\\_export\\_image.htm](https://help.tableau.com/current/pro/desktop/en-us/save_export_image.htm)

## QUESTION NO: 5

Which of the following would you use to edit the Shape, colour, and Text of your visualisations?

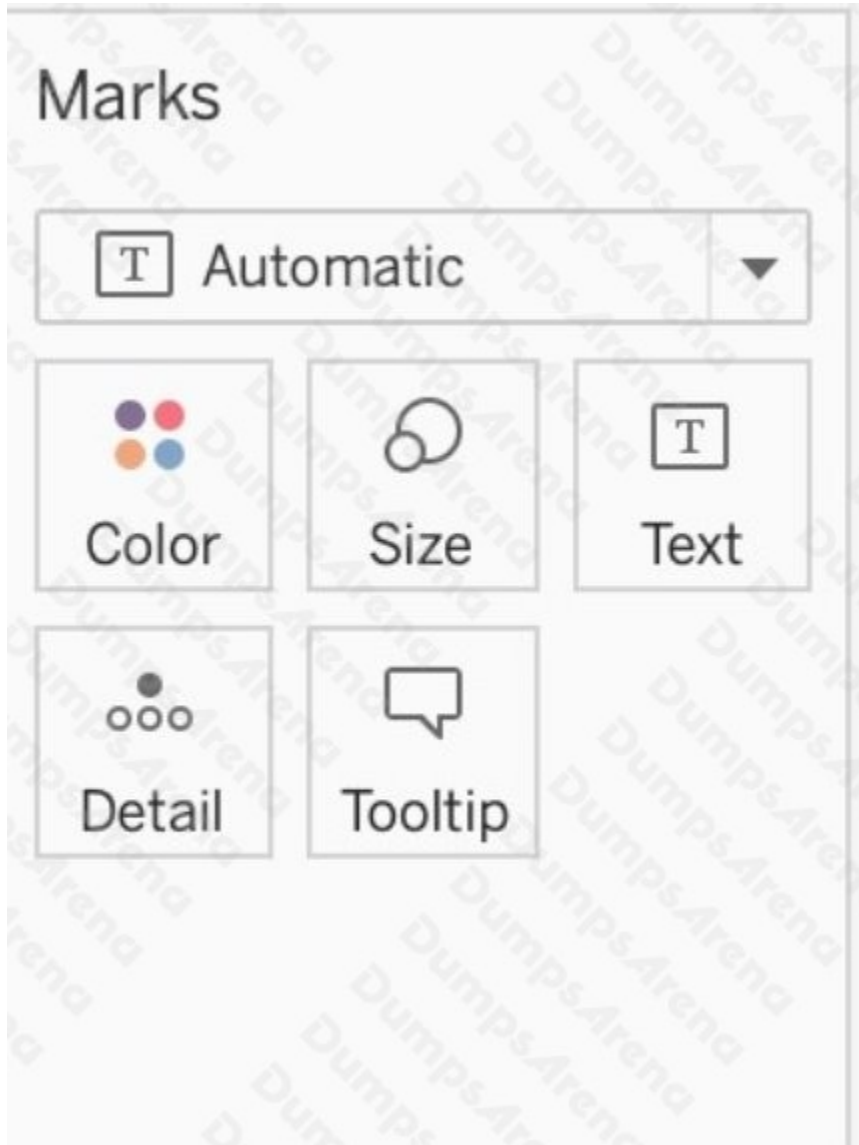
- A. Marks Card
- B. Data Pane
- C. Filter Shelf
- D. Analytics Pane

**ANSWER: A**

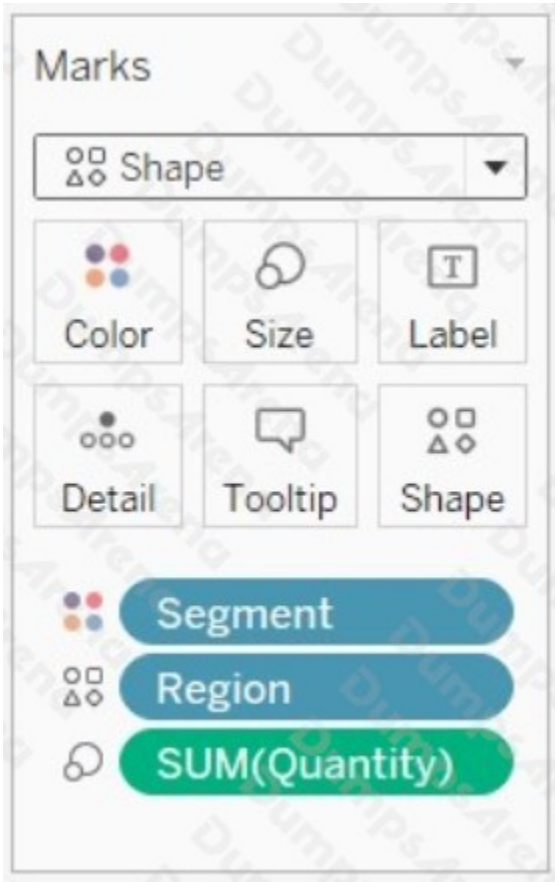
**Explanation:**

:

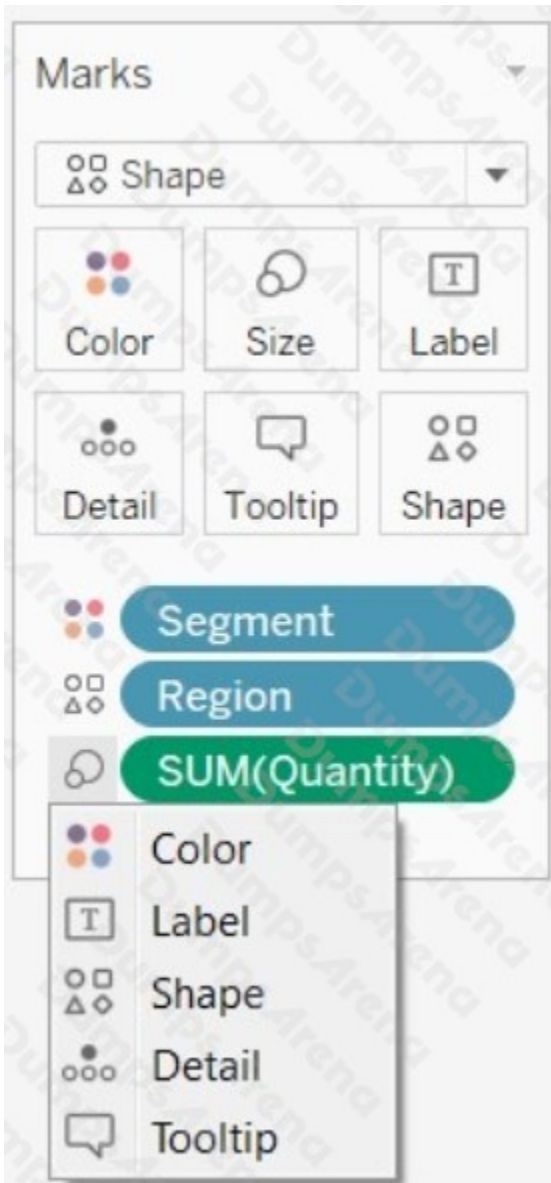
The Marks Card allows us not only to edit the Shape, Text and Colour, but also to modify the Tooltip and the level of detail of the visualisation!



The Marks card is a key element for visual analysis in Tableau. As you drag fields to different properties in the Marks card, you add context and detail to the marks in the view.



You use the Marks card to set the mark type (see Change the Type of Mark in the View), and to encode your data with color, size, shape, text, and detail. To change the mark settings, see Control the Appearance of Marks in the View.



In this example, three different fields have been dragged to different properties in the Marks card. Segment is on Color, Region is on Shape, and Quantity is on Size.

After you add a field to the Marks card, you can click the icon next to the field to change the property it is using. You can also click the property buttons in the Marks card to change those settings.

Many properties can have multiple fields. For example, you can add multiple fields to Label, Detail, Tooltip, and Color. Size and Shape can only have one field at a time. For more details, see [Control the Appearance of Marks in the View](#).

Reference: [https://help.tableau.com/current/pro/desktop/en-us/buildmanual\\_shelves.htm](https://help.tableau.com/current/pro/desktop/en-us/buildmanual_shelves.htm)

## QUESTION NO: 6

Which of the following are benefits of using Data Extracts in Tableau?

- A. Improved Performance
- B. Ability to use the data offline
- C. Working with freshest data at all times
- D. Faster to work with

**ANSWER: A B D**

**Explanation:**

:

Extracts are advantageous for several reasons:

- 1) Supports large data sets: You can create extracts that contain billions of rows of data. 2) Fast to create: If you're working with large data sets, creating and working with extracts can be faster than working with the original data.
- 3) Help improve performance: When you interact with views that use extract data sources, you generally experience better performance than when interacting with views based on connections to the original data.
- 4) Support additional functionality: Extracts allow you to take advantage of Tableau functionality that's not available or supported by the original data, such as the ability to compute Count Distinct.
- 5) Provide offline access to your data: Extracts allow you to save and work with the data locally when the original data is not available. For example, when you are traveling.

To work with the MOST up-to-date data, use a live connection instead!

Reference: [https://help.tableau.com/current/pro/desktop/en-us/extracting\\_data.htm](https://help.tableau.com/current/pro/desktop/en-us/extracting_data.htm)

**QUESTION NO: 7**

Which of the following are valid ways to show Mark Labels in the visualisation?

- A. Click on the Show mark labels icon in the Toolbar
- B. Drag the measure to the Text label in the Marks Card
- C. Click on Data in the Menu bar and Choose Show Mark Labels
- D. Click on Analysis in the Menu bar and choose Show Mark Labels

**ANSWER: A B D**

**Explanation:**

:

The following showcase how you can show mark labels. Using the Sample Superstore dataset:

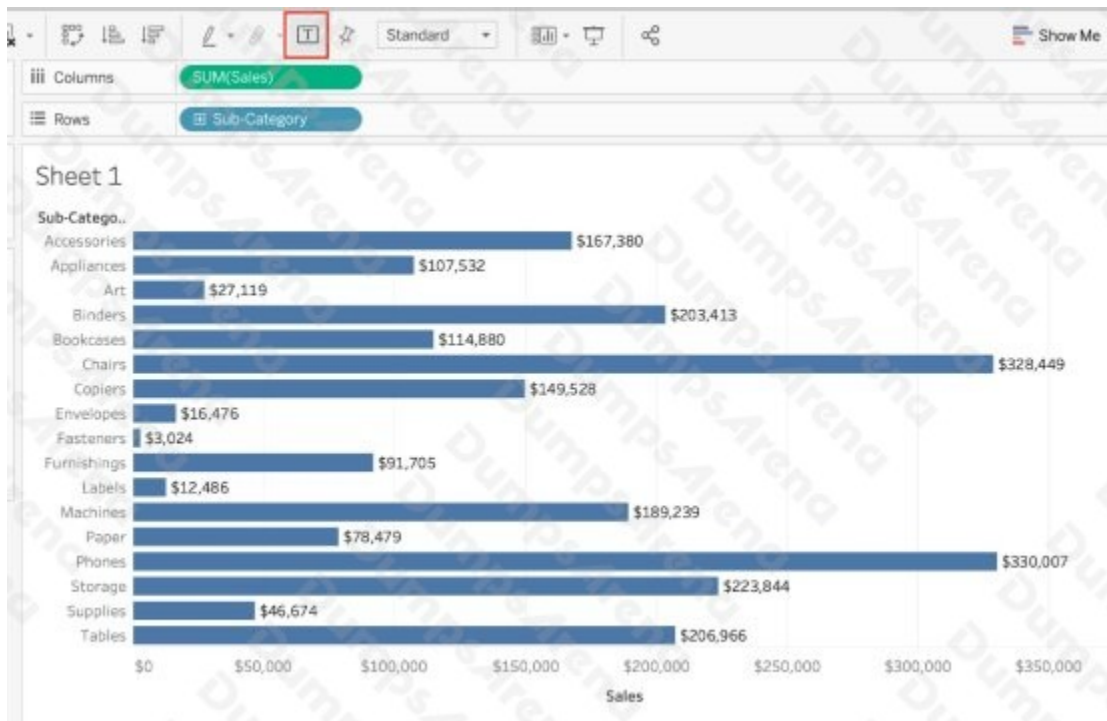
1) Let's create a Bar chart showing the sales for each sub-category:



2) Now you can show labels by:

2.1) Click on Show Mark Labels Icon in the Toolbar ( easiest )





2.2) Drag Sales to the Text icon in the Marks Card:

2.3) Click on Analysis -> Show mark labels from the Tableau menu bar:

**QUESTION NO: 8**

Which of the following are interactive elements that can be added to a dashboard for users?

- A. URL Action
- B. Filter Action

C. Highlight Action

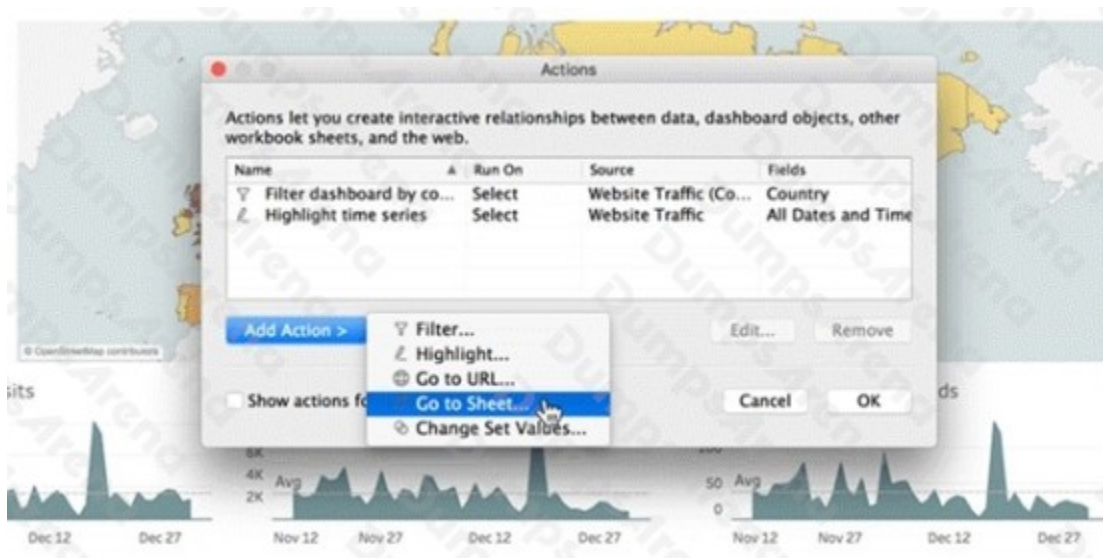
D. Edit Tooltip Action

**ANSWER: A C D**

**Explanation:**

:

We can perform filter, URL and highlight actions out of the above given choices on a dashboard. Please refer to the image below:



Reference: [https://help.tableau.com/current/pro/desktop/en-us/actions\\_dashboards.htm](https://help.tableau.com/current/pro/desktop/en-us/actions_dashboards.htm)

## QUESTION NO: 9

What term is used to describe the following picture?



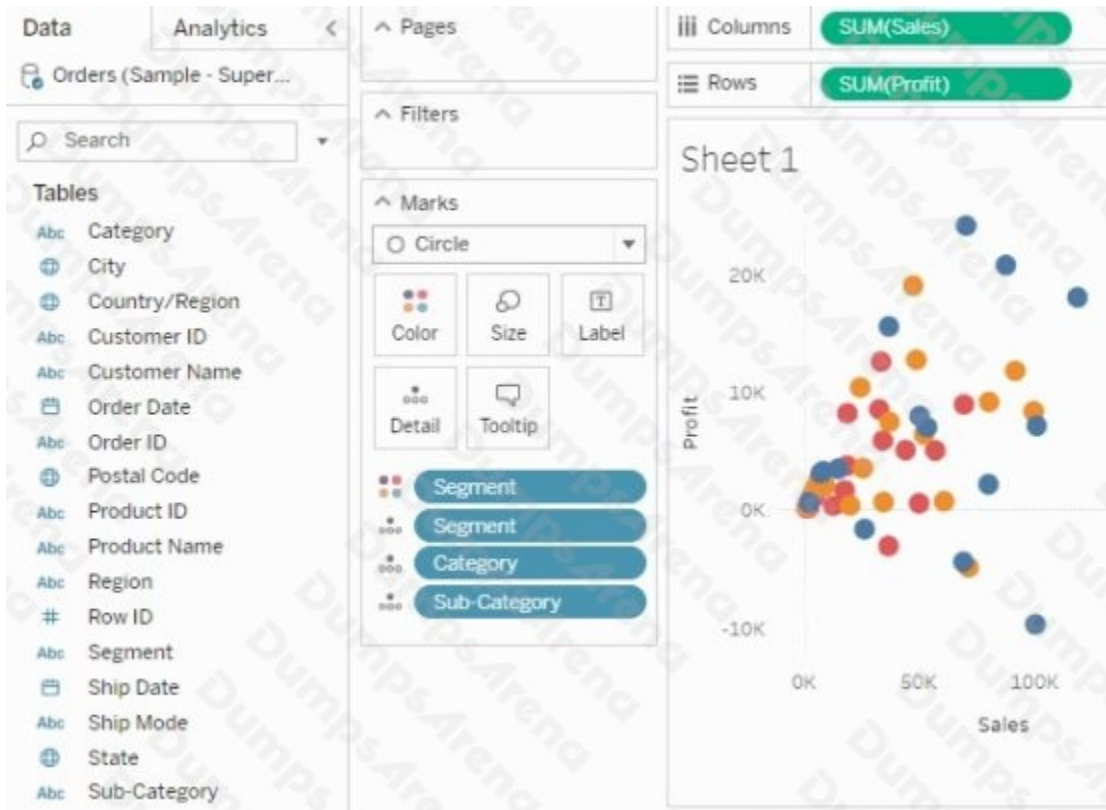
- A. Larger image
- B. Parameter
- C. Set
- D. Hierarchy
- E. Group

**ANSWER: C**

**Explanation:**

:

When you connect to a data source, Tableau automatically separates date fields into hierarchies so you can easily break down the viz. You can also create your own custom hierarchies. For example, if you have a set of fields named Region, State, and County, you can create a hierarchy from these fields so that you can quickly drill down between levels in the viz.



Reference: [https://help.tableau.com/current/pro/desktop/en-us/qs\\_hierarchies.htm](https://help.tableau.com/current/pro/desktop/en-us/qs_hierarchies.htm)

**QUESTION NO: 10**

When using a Blend, what is the color of tick-mark on the primary and secondary data sources respectively?

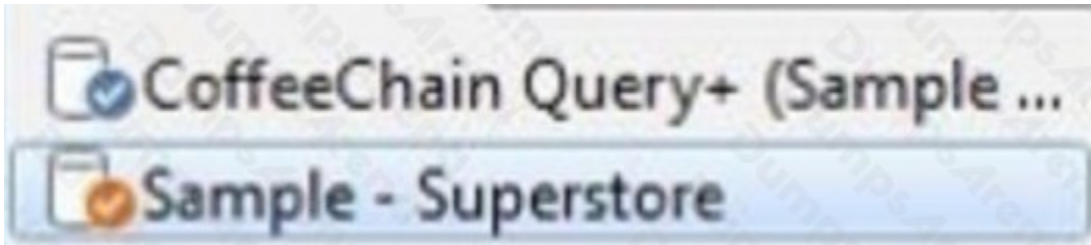
- A. Red, Blue
- B. Orange, Blue
- C. Blue, Red
- D. Blue, Orange

**ANSWER: D****Explanation:**

:

When using a Blend, the primary data source appears with a BLUE tick-mark and the secondary data source appears with a ORANGE tick-mark.

See below:



Reference: [https://www.tutorialspoint.com/tableau/tableau\\_data\\_blending.htm](https://www.tutorialspoint.com/tableau/tableau_data_blending.htm)