

DUMPS ARENA

Implementing Cisco Application Centric Infrastructure - Advanced (DCACIA)

Cisco 300-630

Version Demo

Total Demo Questions: 10

Total Premium Questions: 76

Buy Premium PDF

<https://dumpsarena.co>

sales@dumpsarena.co

sales@dumpsarena.co
dumpsarena.co

Topic Break Down

Topic	No. of Questions
Topic 1, ACI Packet Forwarding	16
Topic 2, Advanced ACI Policies and Integrations	26
Topic 3, Multipod	12
Topic 4, Multisite	12
Topic 5, Traditional network with ACI	10
Total	76

QUESTION NO: 1

Which two actions should be taken to ensure a scalable solution when multiple EPGs in a VRF require unrestricted communication? (Choose two.)

- A. Configure a taboo contract between the EPGs that require unrestricted communication between each other.
- B. Enable Preferred Group Member under the EPG Collection for VRF section.
- C. Set the VRF policy control enforcement preference to Unenforced.
- D. Set the EPGs that require unrestricted communication between each other as preferred group members.
- E. Set the EPGs that require policy enforcement between each other as preferred group members.

ANSWER: C D**Explanation:**

Reference: https://www.cisco.com/c/en/us/td/docs/switches/datacenter/aci/apic/sw/4-x/basicconfiguration/Cisco-APIC-Basic-Configuration-Guide-42x/Cisco-APIC-Basic-Configuration-Guide42x_chapter_0110.html

QUESTION NO: 2

How is multicast traffic managed in a Cisco ACI fabric?

- A. FTag trees are rooted at the spine nodes. Cisco APIC determines the roots.
- B. FTag trees are rooted at the leaf nodes. Cisco APIC determines the roots.
- C. FTag trees are rooted at the leaf nodes. The roots must be configured manually.
- D. FTag trees are rooted at the spine nodes. The roots must be configured manually.

ANSWER: A**Explanation:**

Reference: <https://www.ciscolive.com/c/dam/r/ciscolive/emea/docs/2015/pdf/BRKAPP-9004.pdf>

QUESTION NO: 3

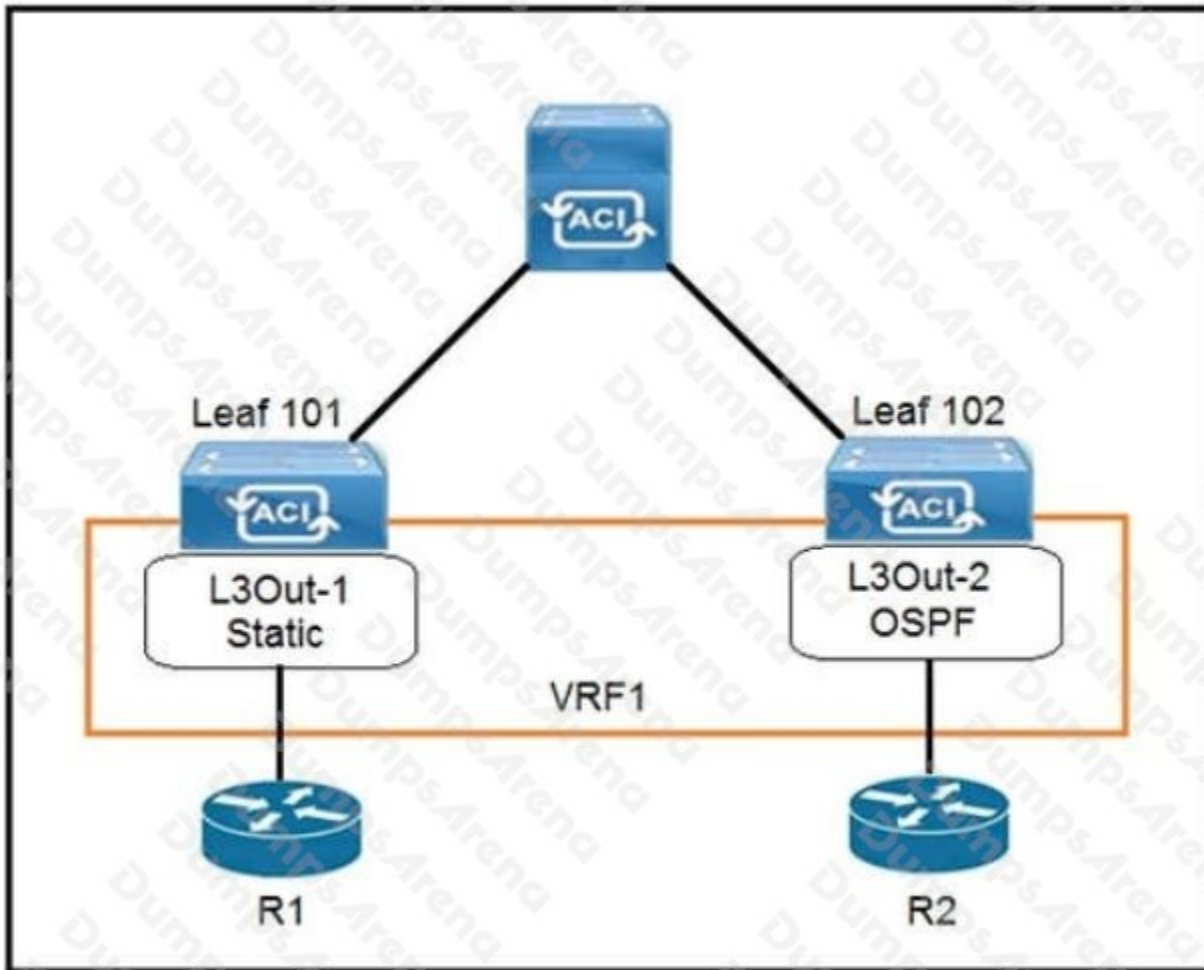


Refer to the exhibit. Which combination of flags in the Cisco ACI contract allows a client in WebClient EPG to establish an HTTP connection toward a server in WebServer EPG?

- A. Apply Both Direction ENABLED and Reverse Port Filter ENABLED
- B. Apply Both Direction DISABLED and Reverse Port Filter DISABLED
- C. Apply Both Direction DISABLED and Reverse Port Filter ENABLED
- D. Apply Both Direction ENABLED and Reverse Port Filter DISABLED

ANSWER: C

QUESTION NO: 4



Refer to the exhibit. The 0.0.0.0/0 is configured as a default static route on L3Out-1. Which action should be taken for the 0.0.0.0/0 prefix to advertise out on L3Out-2 OSPF?

- A. Enable Shared Security Import Subnet
- B. Enable Aggregate Export Subnet
- C. Enable Shared Route Control Subnet
- D. Enable Export Route Control Subnet

ANSWER: B

QUESTION NO: 5

An engineer created a Cisco ACI environment in which multiple tenants reuse the same contract. The requirement is to prevent inter-tenant communication. Which action meets this requirement?

- A. Create the contract in the user tenant with the scope set to VRF and exported to other tenants

- B. Create the contract in the common tenant with the scope set to Tenant
- C. Create the contract in the user tenant with the scope set to Global and exported to other tenants
- D. Create the contract in the common tenant with the scope set to Global

ANSWER: B

QUESTION NO: 6 - (DRAG DROP)

DRAG DROP

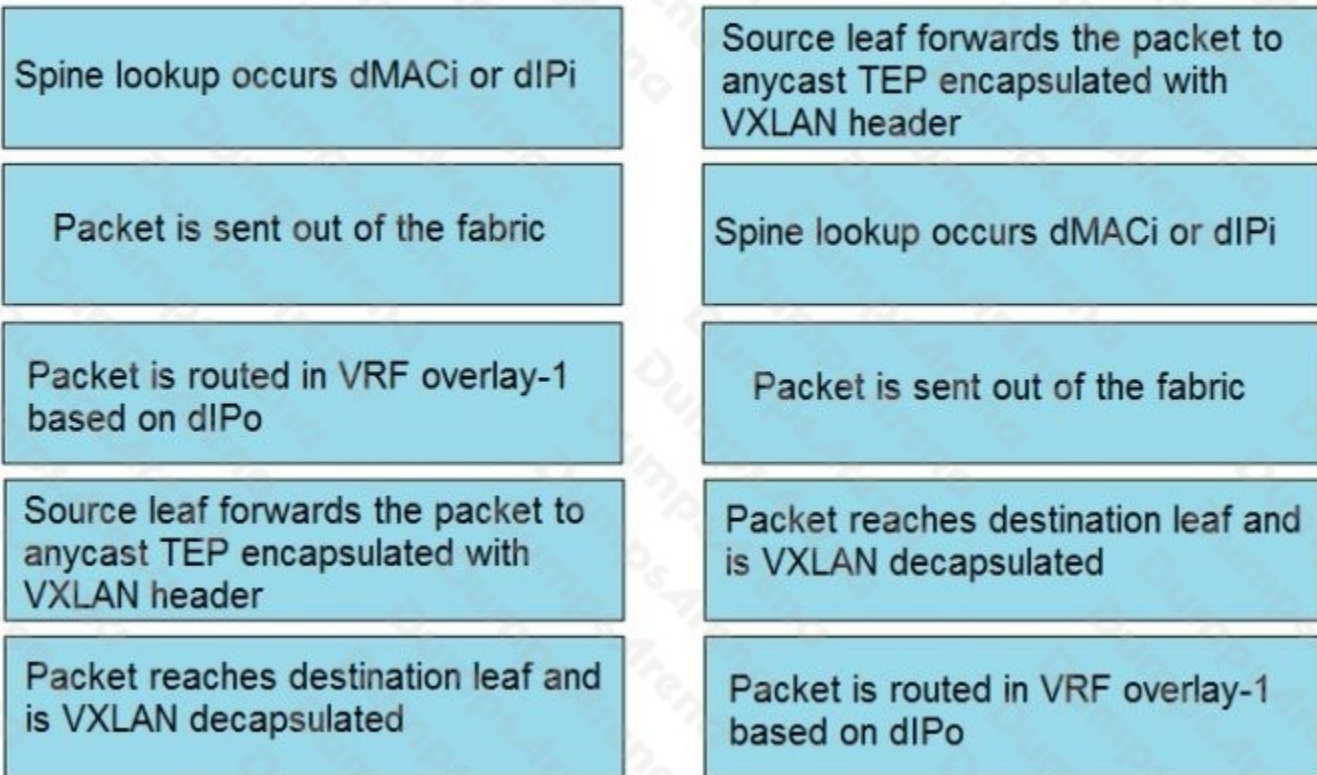
A leaf receives unicast traffic that is destined to an unknown source, and spine proxy is enabled in the corresponding bridge domain. Drag and drop the Cisco ACI forwarding operations from the left into the order the operation occurs on the right.

Select and Place:

Answer Area

Spine lookup occurs dMACi or dIPi	Step 1
Packet is sent out of the fabric	Step 2
Packet is routed in VRF overlay-1 based on dIPo	Step 3
Source leaf forwards the packet to anycast TEP encapsulated with VXLAN header	Step 4
Packet reaches destination leaf and is VXLAN decapsulated	Step 5

ANSWER:

Answer Area

Explanation:

QUESTION NO: 7

Which two components must be configured as stretched to establish intra-VRF communication between two EPGs that are deployed in different sites and different bridge domains? (Choose two.)

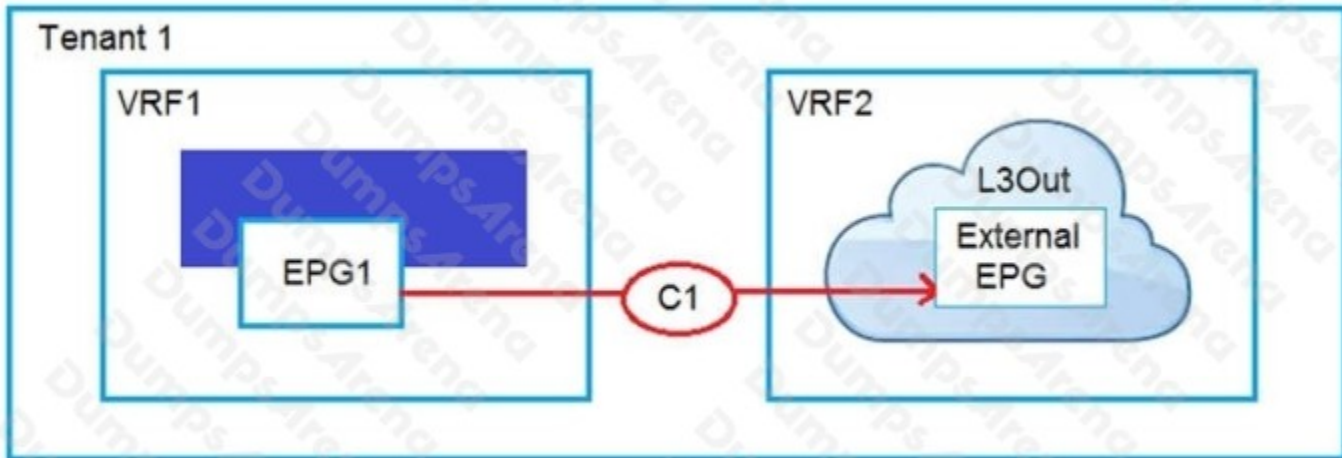
- A. contract
- B. tenant
- C. application profile
- D. bridge domain
- E. EPG

ANSWER: D E

Explanation:

Reference: <https://www.cisco.com/c/en/us/solutions/collateral/data-center-virtualization/application-centric-infrastructure/white-paper-c11-739609.html>

QUESTION NO: 8



Refer to the exhibit. An engineer must have communication between EPG1 in VRF1 and External EPG in VRF2. Which three actions should be taken for the defined subnets in the L3Out External EPG to accomplish this goal? (Choose three.)

- A. Enable Shared Route Control Subnet
- B. Enable External Subnets for External EPG
- C. Enable Export Route Control Subnet
- D. Enable Shared Security Import Subnet
- E. Enable Aggregate Shared Routes
- F. Enable Import Route Control Subnet

ANSWER: C D F

Explanation:

Reference: <https://www.cisco.com/c/en/us/solutions/collateral/data-center-virtualization/application-centric-infrastructure/guide-c07-743150.html>

QUESTION NO: 9

A network engineer configured an active-active firewall cluster that is stretched across separate pods in the Cisco ACI fabric. Which two implementation setups for anycast services are available?

(Choose two.)

- A. Modify the Cisco ACI contract scope
- B. Modify the MAC address on the second firewall
- C. Configure the firewalls behind an EPG subnet
- D. Deselect No Default SVI Gateway under EPG Subnet
- E. Deploy a Layer 4 to Layer 7 service graph with PBR

ANSWER: B C

QUESTION NO: 10

Which feature should be disabled on a bridge domain when a default gateway for endpoints is on an external device instead of a Cisco ACI bridge domain SVI?

- A. unicast routing
- B. ARP flooding
- C. unknown unicast flooding
- D. proxy ARP

ANSWER: C