

DUMPS ARENA

NetApp Certified Support Engineer (NCSE)

Netapp NS0-194

Version Demo

Total Demo Questions: 10

Total Premium Questions: 60

Buy Premium PDF

<https://dumpsarena.co>

sales@dumpsarena.co

sales@dumpsarena.co
dumpsarena.co

QUESTION NO: 1

Workload	ID	Latency	Network	Cluster	Data	Disk	QoS	NVRAM	Cloud
-total-		110.35ms	327.00us	327.00us	0ms				
110.02ms	0ms	0ms	0ms						
vs1vol0	111	167.82ms	603.00us	603.00us	0ms				
167.22ms	0ms	0ms	0ms						
vol1	1234	117.76ms	191.00us	191.00us	0ms				
117.56ms	0ms	0ms	0ms						
vol2	999	44.24ms	190.00us	190.00us	0ms	44.05ms	0ms	0ms	0ms
-total-	-								
38.89ms	256.00us	256.00us	0ms	38.63ms	0ms	0ms	0ms		
vol2	999	64.47ms	266.00us	266.00us	0ms	64.20ms	0ms	0ms	0ms
vol1	1234	27.28ms	253.00us	253.00us	0ms	27.03ms	0ms	0ms	0ms
vs1vol0	111	23.72ms	249.00us	249.00us	0ms	23.47ms	0ms	0ms	0ms
-total-	-	409.81ms	169.00us	169.00us	0ms				
409.65ms	0ms	0ms	0ms						
vol1	1234	816.92ms	120.00us	120.00us	0ms				
816.80ms	0ms	0ms	0ms						
vol2	999	407.88ms	219.00us	219.00us	0ms				
407.66ms	0ms	0ms	0ms						
vs1vol0	111	3.68ms	193.00us	193.00us	0ms	3.49ms	0ms	0ms	0ms

Referring to the exhibit, which two components should be examined? (Choose two.)

- A. cluster switches
- B. SAS adapter
- C. network interface card
- D. disk

ANSWER: B D

QUESTION NO: 2

What are two supported cabling methods for a NetApp HCI compute node? (Choose two.)

- A. 1-cable configuration
- B. 2-cable configuration
- C. 6-cable configuration
- D. 4-cable configuration

ANSWER: B C

Explanation:

Reference: https://library.netapp.com/ecm/ecm_download_file/ECMLP2856899 (11)

QUESTION NO: 3

Which CIFS server configuration determines the domain controllers that a CIFS server uses?

- A. site membership
- B. enabled SMB versions
- C. trusted domains
- D. discovery mode

ANSWER: A

QUESTION NO: 4

On an AFF system, which three storage efficiencies are enabled by default? (Choose three.)

- A. reallocation
- B. compaction
- C. deduplication
- D. compression
- E. encryption

ANSWER: B C D

Explanation:

Reference: <https://docs.netapp.com/ontap-9/index.jsp?topic=%2Fcom.netapp.doc.dot-cm-vsmg%2FGUID-C1E3029E-1514-4579-939B-67160E849632.html>

QUESTION NO: 5

A customer has reported an unexplained reboot of an ONTAP node that did not generate a panic string or a core file.

In this scenario, which two sets of logs do you collect to further diagnosis the issue? (Choose two.)

- A. system core
- B. sp status

- C. events all
- D. sp status -d

ANSWER: A C

QUESTION NO: 6

In ONTAP 9.6, activity on the command line is found in which log?

- A. audit.log
- B. messages.log
- C. command-history.log
- D. mgwd.log

ANSWER: A

Explanation:

Reference:

https://kb.netapp.com/Advice_and_Troubleshooting/Data_Storage_Software/ONTAP_OS/Overview_of_ONTAP_Logs

QUESTION NO: 7

A customer receives the message shown below in their EMS logs.

Tue Jun 27 18:34:18 CEST

[netapp-ct1: cp_worker: wafl.cp.toolong:error]: Aggregate AG1_NTAP_PROD experienced a long CP. Tue Jun 27 18:37:10 CEST

Which two data sources do you use to explain this message? (Choose two.)

- A. ONTAP System Manager
- B. Performance Archive
- C. Active IQ Unified Manager
- D. mgwd.log

ANSWER: A B

Explanation:

Reference:

https://kb.netapp.com/Advice_and_Troubleshooting/Data_Storage_Software/ONTAP_OS/First_steps_troubleshooting_wafl_exempt10%3A_wafl.cp.toolong%3Aerror

QUESTION NO: 8

A disaster causes a FlexGroup volume to be unrecoverable, but it was protected by a SnapMirror relationship. You solve the issue, and the source is operational. Now, you want to return to serving the data from the original source.

In this scenario, what do you do next?

- A. Initialize the SnapMirror relationship.
- B. Restore data from a backup copy.
- C. Perform a SnapMirror update.
- D. Delete the SnapMirror relationship.

ANSWER: A**Explanation:**

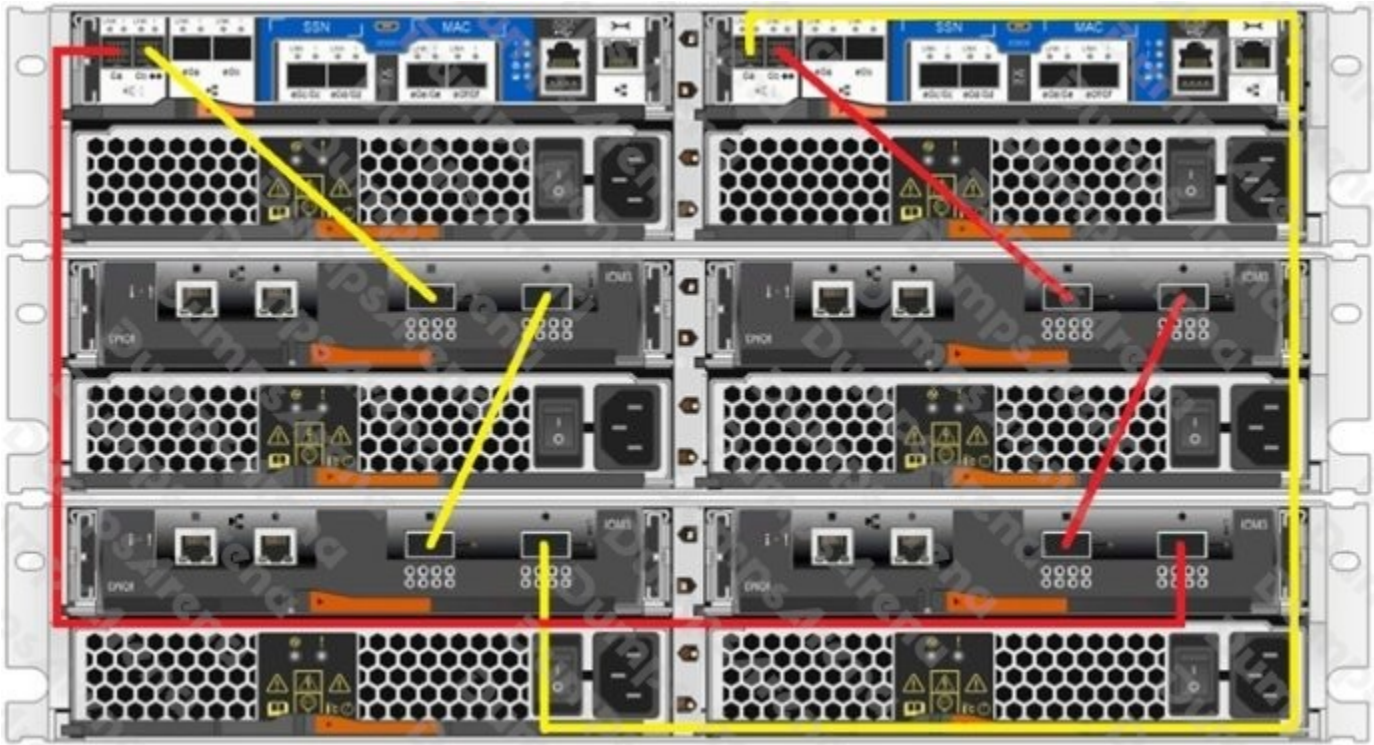
Reference: <https://docs.netapp.com/ontap-9/index.jsp?topic=%2Fcom.netapp.doc.pow-fg-mgmt%2FGUID-576192B0-18B8-40D3-AA3E-FC34415DC4F7.html>

QUESTION NO: 9

You receive the error shown below on a FAS2750 HA pair.

Mon Jun 24 00:27:30 UTC [NetappA: scsi_cmdblk_strthr_admin: scsi.cmd.checkCondition:error]: Unknown device 0a.00.99:
Check Condition: CDB 0x12: Sense Data SCSI:hardware error - (0x4 - 0x44 0x0 0x0) (0).

The system is cabled as shown in the exhibit.



What should you do to clear the error?

- A. Replace the cable connected to controller A's 0a port.
- B. Replace the controller of controller B.
- C. Replace the controller of controller A.
- D. Re-cable the system per the FAS2750 installation guide.

ANSWER: C

QUESTION NO: 10

```
NetApp Release 9.6P3: Sun Sep 22 04:30:45 EDT 2019
System ID: 0537095047 (netapp02n1); partner ID: 0537095086 (netapp02n2)
System Serial Number: 721717000030 (netapp02n1)
System Rev: C3
System Storage Configuration: Quad-Path HA
System ACP Connectivity: Inband Active
All-Flash Optimized: true
Capacity Optimized: false
Backplane Part Number: 111-01459
Backplane Rev: E2
Backplane Serial Number: 021648023564
slot 0: System Board 2.1 GHz (System Board XX C3)
  Model Name:      AFF8040
  Machine Type:   FAS8040
  Part Number:    111-01209
  Revision:       C3
...
slot 0: SAS Host Adapter 0a (PMC-Sierra PM8001 rev. C, SAS, <OFFLINE (hard)>)
Firmware rev:    01.12.09.00
Base WWN:        5:00a098:003a853:10
Phy State:       [0] Disabled
                 [1] Disabled
                 [2] Disabled
                 [3] Disabled
QSFP Vendor:     not available
QSFP Part Number: not available
QSFP Type:       not available
QSFP Serial Number: not available
slot 0: SAS Host Adapter 0b (PMC-Sierra PM8001 rev. C, SAS, <OFFLINE (hard)>)
Firmware rev:    01.12.09.00
Base WWN:        5:00a098:003a853:14
Phy State:       [4] Disabled
                 [5] Disabled
                 [6] Disabled
                 [7] Disabled
QSFP Vendor:     not available
QSFP Part Number: not available
QSFP Type:       not available
QSFP Serial Number: not available
slot 0: SAS Host Adapter 0c (PMC-Sierra PM8001 rev. C, SAS, <OFFLINE (hard)>)
Firmware rev:    01.12.09.00
Base WWN:        5:00a098:003a853:18
Phy State:       [0] Disabled
                 [1] Disabled
                 [2] Disabled
                 [3] Disabled
QSFP Vendor:     not available
QSFP Part Number: not available
QSFP Type:       not available
QSFP Serial Number: not available
slot 0: SAS Host Adapter 0d (PMC-Sierra PM8001 rev. C, SAS, )
Firmware rev:    01.12.09.00
Base WWN:        5:00a098:003a853:1c
Phy State:       [4] Disabled
                 [5] Disabled
                 [6] Disabled
                 [7] Disabled
QSFP Vendor:     not available
QSFP Part Number: not available
QSFP Type:       not available
QSFP Serial Number: not available
...
slot 0: IB Host Adapter 10 (Mellanox ConnectX MT27518 rev. 0)
Running Firmware: 2.11.534
Debug Firmware: No
Interconnect Port 1:
Port Name:       ib0a
Default GID:     fe80:0000:0000:0000:00a0:9800:0035:3e2c
Base LID:        0xe2c
Active MTU:      4096
Data Rate:       40 Gb/s (4X) QDR
Link State:      ACTIVE
Interconnect Port 2:
Port Name:       ib0b
Default GID:     fe80:0000:0000:0000:00a0:9800:0035:3e2d
Base LID:        0xe2d
Active MTU:      4096
Data Rate:       40 Gb/s (4X) QDR
Link State:      ACTIVE
```

```
slot 0: Intel USB EHCI Adapter u0a (0x47E20000)
boot0 ATP IG eUSB 0xaf01, class 0/0, rev 2.00/11.00, addr 2 7676MB 512B/sect (devproto=0x00)
slot 1: FCVI Host Adapter 1a (QLogic 8324(2672) rev. 2, F-port)
Physical link: UP
FC Node Name: 21:00:00:0e:1e:e9:bc:70
Firmware rev: 8.01.141
Serial No: RFE1709S90753
Host Port Id: 0x80000
FC Packet size: 2048
SFP Vendor: FINISAR CORP.
SFP Part Number: FTLF8529P3BCV-QL
SFP Serial Number: UVF1X7Y
SFP Capabilities: 4, 8 or 16 Gbit
SFP Wavelength: 850nm
Link Data Rate: 16 Gbit
Switch Port: sw02-02:0
Switch Vendor: Brocade Communications, Inc.
Switch Model: 109.1
Switch FW Version: v8.1.2a
slot 1: FCVI Host Adapter 1b (QLogic 8324(2672) rev. 2, F-port)
Physical link: UP
FC Node Name: 21:00:00:0e:1e:e9:bc:71
Firmware rev: 8.01.141
Serial No: RFE1709S90753
Host Port Id: 0x70000
FC Packet size: 2048
SFP Vendor: FINISAR CORP.
SFP Part Number: FTLF8529P3BCV-QL
SFP Serial Number: UVF1GCE
SFP Capabilities: 4, 8 or 16 Gbit
SFP Wavelength: 850nm
Link Data Rate: 16 Gbit
Switch Port: sw02-01:0
Switch Vendor: Brocade Communications, Inc.
Switch Model: 109.1
Switch FW Version: v8.1.2a
slot 3: FC Host Adapter 3a (Emulex XE201 rev. 48, N-port, )
Board name: 111-02451
Serial Number: FC62549991
Firmware rev: 11.4.277.0
Host Port Id: 0x70200
FC Node Name: 2:000:0090fa:e5e2c3
FC Port Name: 1:000:0090fa:e5e2c3
SFP Vendor: EMULEX
SFP Part Number: AFBR-57F5M2-ELX
SFP Serial Number: AC1612J0A1K
SFP Capabilities: 4, 8 or 16 Gbit
Link Data Rate: 16 Gbit
Switch Port: sw02-01:2
sw01-01:8.126L1 : NETAPP X447_TPM4V800AMD NA01 762.8GB 520B/sect (X6N0A01VT0DE)
...
sw02-01:8.126L544 : NETAPP X447_TPM4V800AMD NA01 762.8GB 520B/sect (Z6R0A0RR0DE)
FC-to-SAS Bridge:
sw02-01:8.126L0 : ATTO FibreBridge7500N 2.96 FB7500N104556
sw01-01:8.126L0 : ATTO FibreBridge7500N 2.96 FB7500N104355
sw02-01:8.shelf60: DS2246 Firmware rev. IOM6 A: 0191 IOM6 B: 0191
sw02-01:8.shelf61: DS2246 Firmware rev. IOM6 A: 0191 IOM6 B: 0191
sw02-01:8.shelf80: DS2246 Firmware rev. IOM6 A: 0191 IOM6 B: 0191
sw02-01:8.shelf81: DS2246 Firmware rev. IOM6 A: 0191 IOM6 B: 0191
sw01-01:8.shelf20: DS2246 Firmware rev. IOM6 A: 0191 IOM6 B: 0191
sw01-01:8.shelf21: DS2246 Firmware rev. IOM6 A: 0191 IOM6 B: 0191
sw01-01:8.shelf40: DS2246 Firmware rev. IOM6 A: 0191 IOM6 B: 0191
sw01-01:8.shelf41: DS2246 Firmware rev. IOM6 A: 0191 IOM6 B: 0191
slot 3: FC Host Adapter 3b (Emulex XE201 rev. 48, N-port, <UP>)
```

```

Board name: 111-02451
Serial Number: FC62549991
Firmware rev: 11.4.277.0
Host Port Id: 0x80200
FC Node Name: 2:000:0090fa:e5e2c2
FC Port Name: 1:000:0090fa:e5e2c2
SFP Vendor: EMULEX
SFP Part Number: AFBR-57F5M2-ELX
SFP Serial Number: AC1612J0A1H
SFP Capabilities: 4, 8 or 16 Gbit
Link Data Rate: 16 Gbit
Switch Port: sw02-02:2
sw01-02:9.126L1 : NETAPP X447_TPM4V800AMD NA01 762.8GB 520B/sect (X6N0A01VT0DE)
...
sw02-02:8.126L544: NETAPP X447_TPM4V800AMD NA01 762.8GB 520B/sect (26R0A0RRTODE)
FC-to-SAS Bridge:
sw02-02:8.126L0 : ATTO FibreBridge7500N 2.96 FB7500N104556
sw01-02:8.126L0 : ATTO FibreBridge7500N 2.96 FB7500N104355
sw02-02:8.shelf60: DS2246 Firmware rev. IOM6 A: 0191 IOM6 B: 0191
sw02-02:8.shelf61: DS2246 Firmware rev. IOM6 A: 0191 IOM6 B: 0191
sw02-02:8.shelf80: DS2246 Firmware rev. IOM6 A: 0191 IOM6 B: 0191
sw02-02:8.shelf81: DS2246 Firmware rev. IOM6 A: 0191 IOM6 B: 0191
sw01-02:8.shelf20: DS2246 Firmware rev. IOM6 A: 0191 IOM6 B: 0191
sw01-02:8.shelf21: DS2246 Firmware rev. IOM6 A: 0191 IOM6 B: 0191
sw01-02:8.shelf40: DS2246 Firmware rev. IOM6 A: 0191 IOM6 B: 0191
sw01-02:8.shelf41: DS2246 Firmware rev. IOM6 A: 0191 IOM6 B: 0191
...
slot 4: FC Host Adapter 4a (Emulex XE201 rev. 48, N-port, 1)
Board name: 111-02451
Serial Number: FC62547357
Firmware rev: 11.4.277.0
Host Port Id: 0x70300
FC Node Name: 2:000:0090fa:e5e52d
FC Port Name: 1:000:0090fa:e5e52d
SFP Vendor: EMULEX
SFP Part Number: AFBR-57F5M2-ELX
SFP Serial Number: AA1612J0B4T
SFP Capabilities: 4, 8 or 16 Gbit
Link Data Rate: 16 Gbit
Switch Port: sw02-01:3
sw01-01:9.126L27 : NETAPP X447_TPM4V800AMD NA01 762.8GB 520B/sect (X6N0A01VT0DE)
...
sw02-01:9.126L518: NETAPP X447_TPM4V800AMD NA01 762.8GB 520B/sect (26R0A0RRTODE)
FC-to-SAS Bridge:
sw01-01:9.126L0 : ATTO FibreBridge7500N 2.96 FB7500N104551
sw02-01:9.126L0 : ATTO FibreBridge7500N 2.77 FB7500N104550
sw02-01:9.shelf60: DS2246 Firmware rev. IOM6 A: 0191 IOM6 B: 0191
sw02-01:9.shelf61: DS2246 Firmware rev. IOM6 A: 0191 IOM6 B: 0191
sw02-01:9.shelf80: DS2246 Firmware rev. IOM6 A: 0191 IOM6 B: 0191
sw02-01:9.shelf81: DS2246 Firmware rev. IOM6 A: 0191 IOM6 B: 0191
sw01-01:9.shelf20: DS2246 Firmware rev. IOM6 A: 0191 IOM6 B: 0191
sw01-01:9.shelf21: DS2246 Firmware rev. IOM6 A: 0191 IOM6 B: 0191
sw01-01:9.shelf40: DS2246 Firmware rev. IOM6 A: 0191 IOM6 B: 0191
sw01-01:9.shelf41: DS2246 Firmware rev. IOM6 A: 0191 IOM6 B: 0191
...
slot 4: FC Host Adapter 4b (Emulex XE201 rev. 48, N-port, 1)
Board name: 111-02451
Serial Number: FC62547357
Firmware rev: 11.4.277.0
Host Port Id: 0x80300
FC Node Name: 2:000:0090fa:e5e52c
FC Port Name: 1:000:0090fa:e5e52c
SFP Vendor: EMULEX
SFP Part Number: AFBR-57F5M2-ELX
SFP Serial Number: AA1612J0B43
SFP Capabilities: 4, 8 or 16 Gbit
Link Data Rate: 16 Gbit
Switch Port: sw02-02:3
sw01-02:9.126L27 : NETAPP X447_TPM4V800AMD NA01 762.8GB 520B/sect (X6N0A01VT0DE)
...
sw02-02:9.126L518: NETAPP X447_TPM4V800AMD NA01 762.8GB 520B/sect (26R0A0RRTODE)
FC-to-SAS Bridge:
sw01-02:9.126L0 : ATTO FibreBridge7500N 2.96 FB7500N104551
sw02-02:9.126L0 : ATTO FibreBridge7500N 2.77 FB7500N104550
sw02-02:9.shelf60: DS2246 Firmware rev. IOM6 A: 0191 IOM6 B: 0191
sw02-02:9.shelf61: DS2246 Firmware rev. IOM6 A: 0191 IOM6 B: 0191
sw02-02:9.shelf80: DS2246 Firmware rev. IOM6 A: 0191 IOM6 B: 0191
sw02-02:9.shelf81: DS2246 Firmware rev. IOM6 A: 0191 IOM6 B: 0191
sw01-02:9.shelf20: DS2246 Firmware rev. IOM6 A: 0191 IOM6 B: 0191
sw01-02:9.shelf21: DS2246 Firmware rev. IOM6 A: 0191 IOM6 B: 0191
sw01-02:9.shelf40: DS2246 Firmware rev. IOM6 A: 0191 IOM6 B: 0191
sw01-02:9.shelf41: DS2246 Firmware rev. IOM6 A: 0191 IOM6 B: 0191
...

```

Which type of MetroCluster is shown in the exhibit?

- A. 2-node stretch MetroCluster
- B. 4-node MetroCluster IP
- C. 4-node Fabric-Attached MetroCluster
- D. 4-node stretch MetroCluster

ANSWER: C