

DUMPS ARENA

Implementing Cisco Application Centric Infrastructure - Advanced (600-660 DCACIA)

Cisco 600-660

Version Demo

Total Demo Questions: 10

Total Premium Questions: 60

Buy Premium PDF

<https://dumpsarena.co>

sales@dumpsarena.co

sales@dumpsarena.co
dumpsarena.co

Topic Break Down

| Topic | No. of Questions |
|---|------------------|
| Topic 1, ACI Packet Forwarding | 9 |
| Topic 2, Advanced ACI Policies and Integrations | 21 |
| Topic 3, Multipod | 11 |
| Topic 4, Multisite | 11 |
| Topic 5, Traditional network with ACI | 8 |
| Total | 60 |

QUESTION NO: 1

An engineer configures a new Cisco ACI Multi-Pod setup. Which action should be taken for fabric discovery to be successful for the nodes in Pod 2?

- A. Select the Route Reflector field in Pod Peering
- B. Enable the DSCP class-cos translation policy for Layer 3 traffic
- C. Configure POD 2 Data Plane TEP under the Pod Connection Profile
- D. Add the IPN subnet under the Fabric External Routing Profile

ANSWER: D**QUESTION NO: 2**

What are two characteristics of network-centric design in Cisco ACI? (Choose two.)

- A. There is open communication between EPGs
- B. EPGs are used for microsegmentation
- C. EPGs are different security zones
- D. Applications define the network requirements
- E. A bridge domain has one subnet and one EPG

ANSWER: B E**QUESTION NO: 3**

An engineer must limit local and remote endpoint learning to the bridge domain subnet. Which action should be taken inside the Cisco APIC?

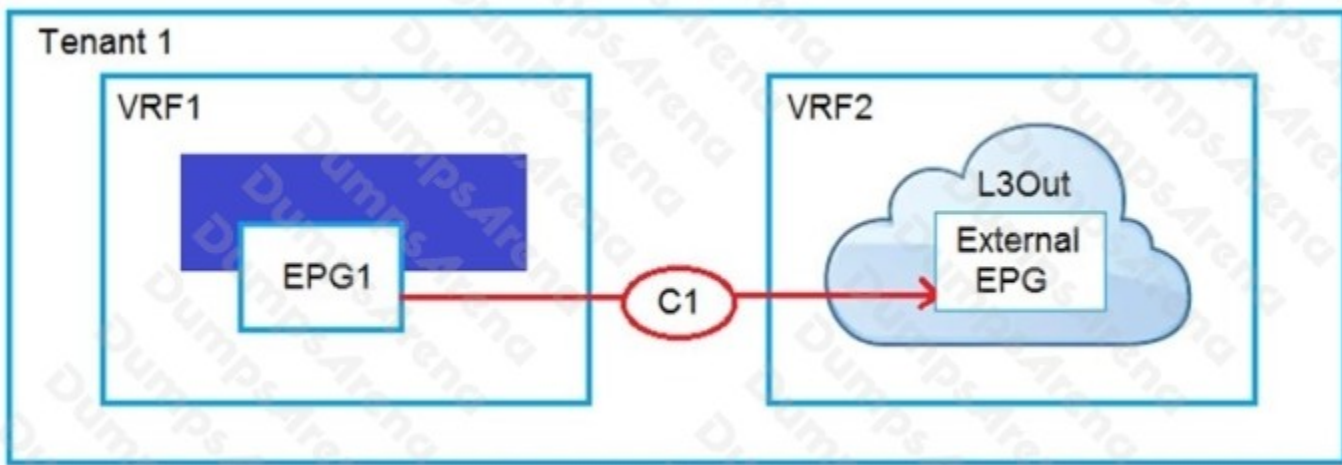
- A. Disable Remote EP Learn
- B. Enable Enforce Subnet Check
- C. Disable Endpoint Dataplane Learning
- D. Enable Limit IP Learning to Subnet

ANSWER: B

Explanation:

Reference: <https://www.cisco.com/c/en/us/solutions/collateral/data-center-virtualization/application-centric-infrastructure/white-paper-c11-739989.html>

QUESTION NO: 4



Refer to the exhibit. An engineer must have communication between EPG1 in VRF1 and External EPG in VRF2. Which three actions should be taken for the defined subnets in the L3Out External EPG to accomplish this goal? (Choose three.)

- A. Enable Shared Route Control Subnet
- B. Enable External Subnets for External EPG
- C. Enable Export Route Control Subnet
- D. Enable Shared Security Import Subnet
- E. Enable Aggregate Shared Routes
- F. Enable Import Route Control Subnet

ANSWER: C D F

Explanation:

Reference: <https://www.cisco.com/c/en/us/solutions/collateral/data-center-virtualization/application-centric-infrastructure/guide-c07-743150.html>

QUESTION NO: 5

Which two actions should be taken to ensure a scalable solution when multiple EPGs in a VRF require unrestricted communication? (Choose two.)

- A. Configure a taboo contract between the EPGs that require unrestricted communication between each other.
- B. Enable Preferred Group Member under the EPG Collection for VRF section.
- C. Set the VRF policy control enforcement preference to Unenforced.
- D. Set the EPGs that require unrestricted communication between each other as preferred group members.
- E. Set the EPGs that require policy enforcement between each other as preferred group members.

ANSWER: C D

Explanation:

Reference: https://www.cisco.com/c/en/us/td/docs/switches/datacenter/aci/apic/sw/4-x/basic-configuration/Cisco-APIC-Basic-Configuration-Guide-42x/Cisco-APIC-Basic-Configuration-Guide42x_chapter_0110.html

QUESTION NO: 6 - (DRAG DROP)

DRAG DROP

Drag and drop the tenant implementation designs from the left onto the outcomes of the design when a greenfield Cisco ACI fabric is deployed on the right.

Select and Place:

Answer Area

VRF configured in common tenant; BDs and EPGs configured in dedicated tenants.

VRF and BDs configured in common tenant; EPGs configured in user tenants.

VRF, BD, and EPG configured in common tenant.

VRF, BD, and EPG configured in user tenants.

One organization without RBAC requirements owns all of the configuration.

Different organizations can have overlapping subnets.

Organizations use different tenants and share the same subnets.

Each organization has access only to dedicated resources, tied into RBAC rules.

ANSWER:

Answer Area

| | |
|--|--|
| VRF configured in common tenant; BDs and EPGs configured in dedicated tenants. | VRF, BD, and EPG configured in user tenants. |
| VRF and BDs configured in common tenant; EPGs configured in user tenants. | VRF, BD, and EPG configured in common tenant. |
| VRF, BD, and EPG configured in common tenant. | VRF configured in common tenant; BDs and EPGs configured in dedicated tenants. |
| VRF, BD, and EPG configured in user tenants. | VRF and BDs configured in common tenant; EPGs configured in user tenants. |

Explanation:

QUESTION NO: 7

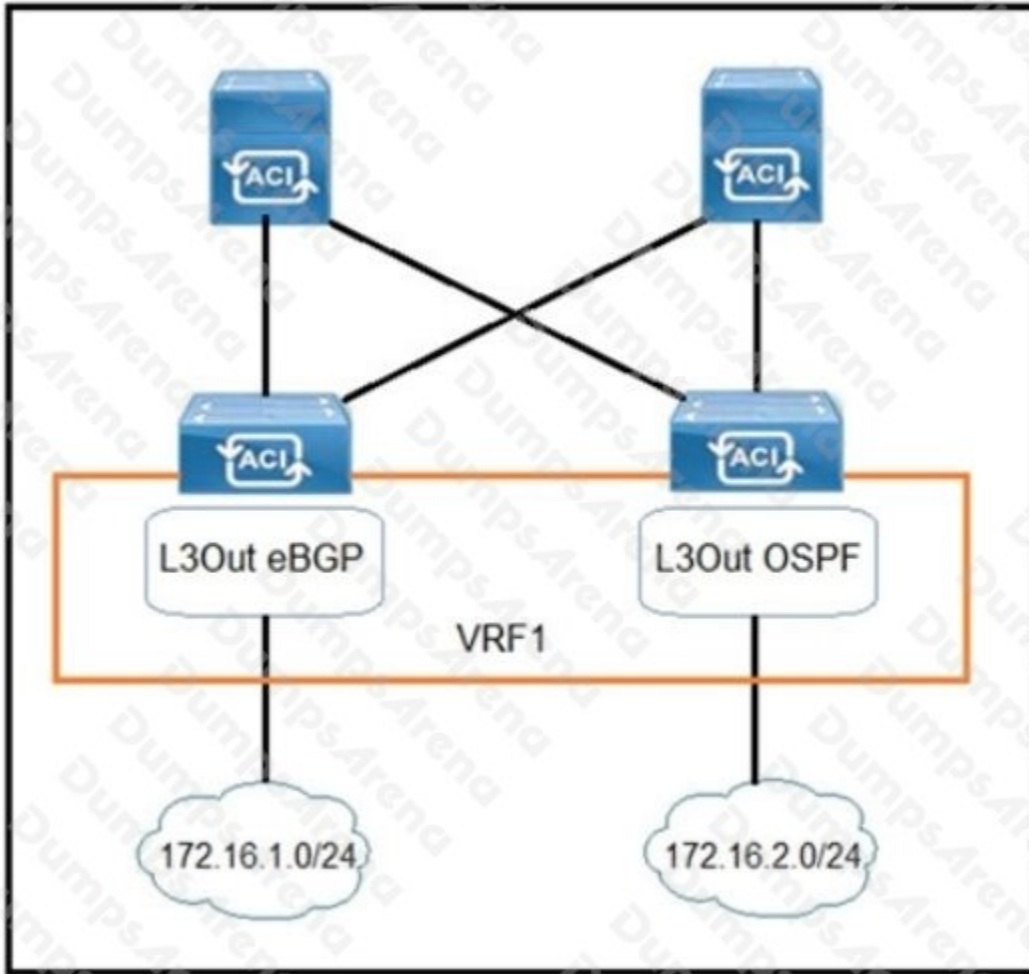
A network engineer configured an active-active firewall cluster that is stretched across separate pods in the Cisco ACI fabric. Which two implementation setups for anycast services are available?

(Choose two.)

- A. Modify the Cisco ACI contract scope
- B. Modify the MAC address on the second firewall
- C. Configure the firewalls behind an EPG subnet
- D. Deselect No Default SVI Gateway under EPG Subnet
- E. Deploy a Layer 4 to Layer 7 service graph with PBR

ANSWER: B C

QUESTION NO: 8



Refer to the exhibit. Which configuration must be implemented on L3Out EBGP to advertise out of the fabric 172.16.2.0/24 network that is learned from L3Out OSPF?

A.

Create Subnet
Specify the Subnet

IP Address:
address/mask

scope: Export Route Control Subnet
 Import Route Control Subnet
 External Subnets for the External EPG
 Shared Route Control Subnet
 Shared Security Import Subnet

B.

Create Subnet
Specify the Subnet

IP Address:
address/mask

scope: Export Route Control Subnet
 Import Route Control Subnet
 External Subnets for the External EPG
 Shared Route Control Subnet
 Shared Security Import Subnet

C.

Create Subnet
Specify the Subnet

IP Address:
address/mask

scope: Export Route Control Subnet
 Import Route Control Subnet
 External Subnets for the External EPG
 Shared Route Control Subnet
 Shared Security Import Subnet

D.

Create Subnet
Specify the Subnet

IP Address:
address/mask

scope: Export Route Control Subnet
 Import Route Control Subnet
 External Subnets for the External EPG
 Shared Route Control Subnet
 Shared Security Import Subnet

A. Option A

B. Option B

C. Option C

D. Option D

ANSWER: A**QUESTION NO: 9**

An engineer designs a Cisco ACI Multi-Pod solution that requires a pair of active-standby firewalls in different pods for external connectivity. How should the firewalls be implemented?

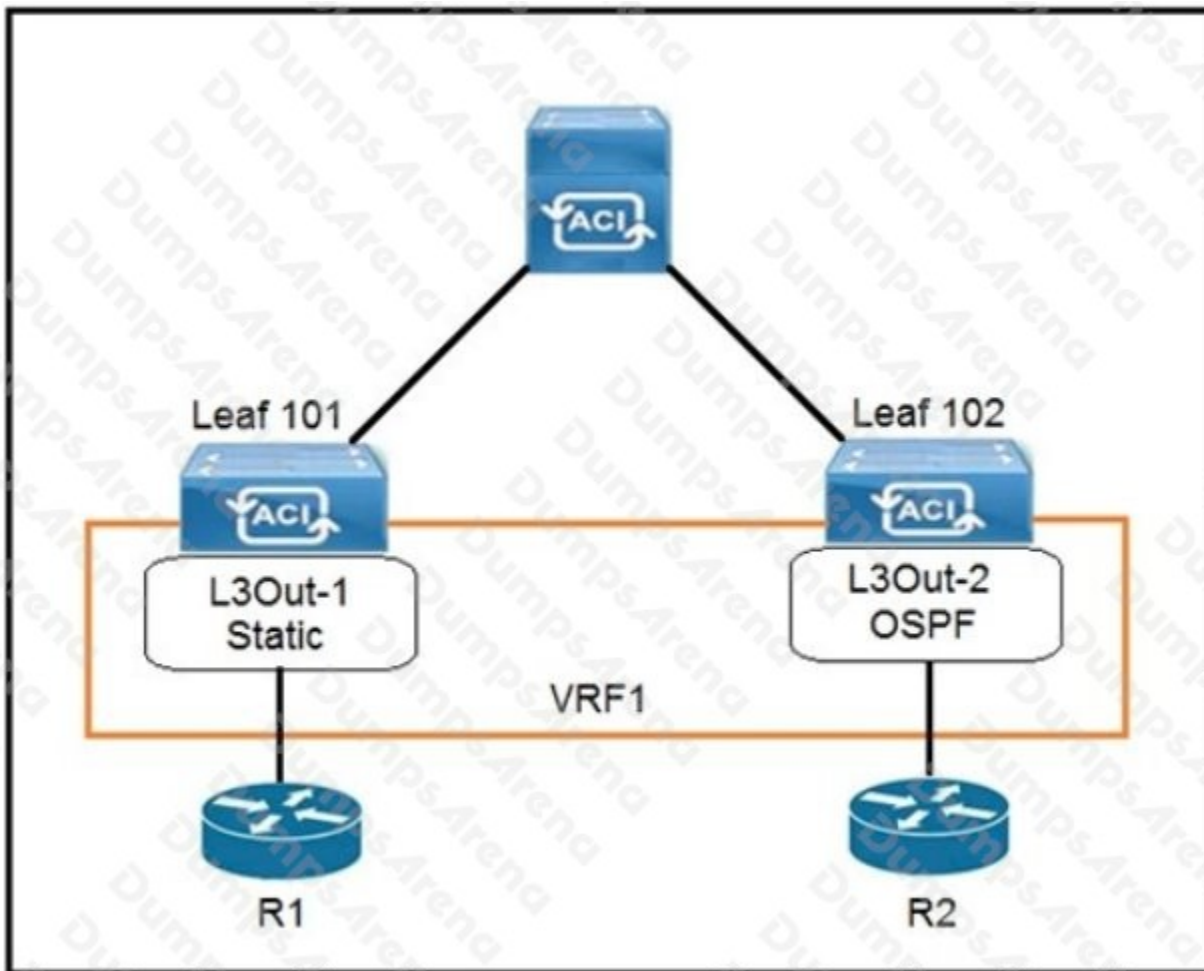
- A. PBR for routed firewalls
- B. separate L3Out peerings for routed firewalls
- C. routed firewall for the default gateway
- D. transparent firewalls

ANSWER: D

Explanation:

Reference: <https://www.cisco.com/c/en/us/solutions/collateral/data-center-virtualization/application-centric-infrastructure/white-paper-c11-739571.html>

QUESTION NO: 10



Refer to the exhibit. The 0.0.0.0/0 is configured as a default static route on L3Out-1. Which action should be taken for the 0.0.0.0/0 prefix to advertise out on L3Out-2 OSPF?

- A. Enable Shared Security Import Subnet
- B. Enable Aggregate Export Subnet
- C. Enable Shared Route Control Subnet
- D. Enable Export Route Control Subnet

ANSWER: B