

DUMPS ARENA

IBM App Connect Enterprise V11 Solution Development

IBM C1000-056

Version Demo

Total Demo Questions: 10

Total Premium Questions: 62

Buy Premium PDF

<https://dumpsarena.co>

sales@dumpsarena.co

sales@dumpsarena.co
dumpsarena.co

QUESTION NO: 1

Which command allows the bulk import of application message formats?

- A. mqsiimportschemadefs
- B. mqsicreatemsgdefs
- C. mqsicreatedefs
- D. mqsibulkimportmsgdefs

ANSWER: B**Explanation:**

: https://www.ibm.com/support/knowledgecenter/SSMKHH_10.0.0/com.ibm.etools.mft.doc/b_d40550_.html

QUESTION NO: 2 - (DRAG DROP)**DRAG DROP**

What are the correct sequence of steps to define the operations in a service interface?

The screenshot shows a drag-and-drop interface with two columns: "Unordered Options" and "Ordered Options".

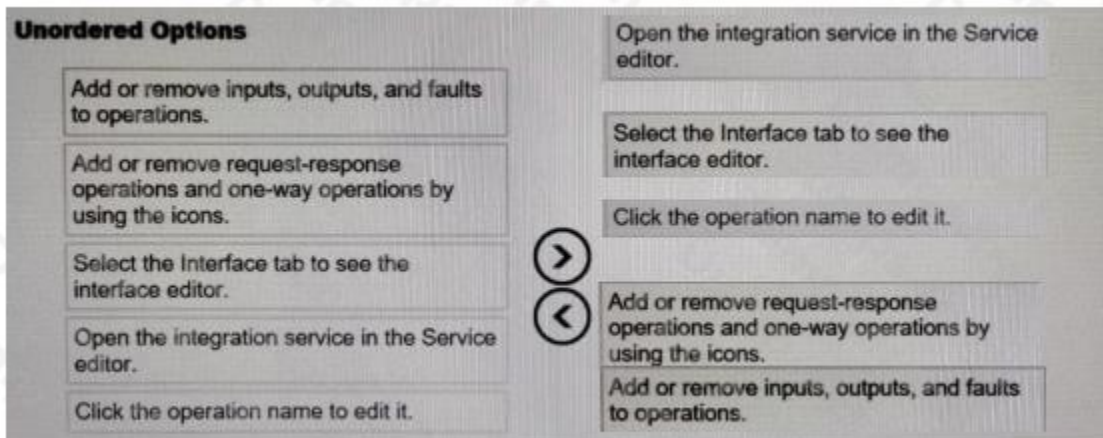
Unordered Options:

- Add or remove inputs, outputs, and faults to operations.
- Add or remove request-response operations and one-way operations by using the icons.
- Select the Interface tab to see the interface editor.
- Open the integration service in the Service editor.
- Click the operation name to edit it.

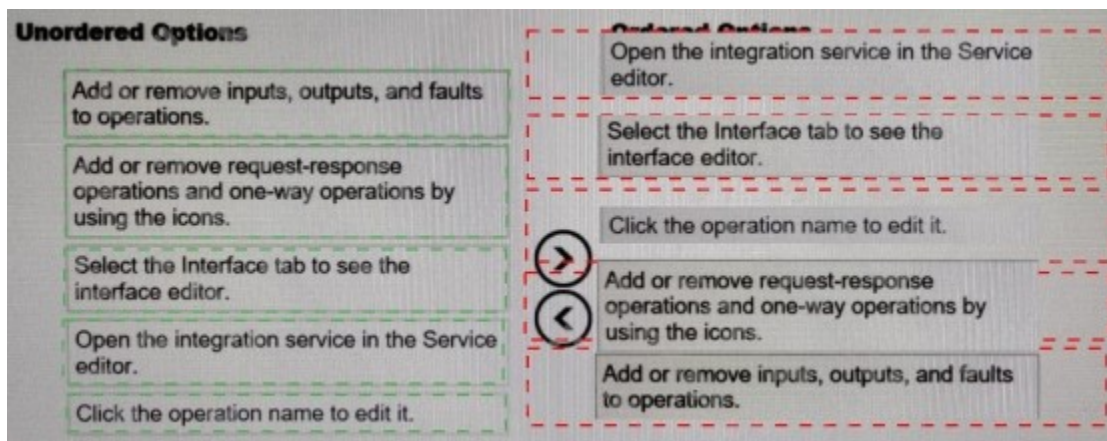
Ordered Options:

Between the columns are two circular arrows: a right-pointing arrow (>) above a left-pointing arrow (<).

ANSWER:



Explanation:



- ⇒ Open your integration service in the Service editor by double-clicking the Service Description in the Application Development view, or by right-clicking and selecting Open.
- ⇒ Select the Interface tab to see the interface editor.
- ⇒ By default, a request-response operation is created when the integration service is created. Click the operation name to edit it.
- ⇒ Add or remove request-response operations and one-way operations by using the icons.
- ⇒ Add or remove inputs, outputs, and faults to operations by using the icons. In the Properties tab, click the name and type of an input, output, or fault to edit it. You can create a new complex type for an input, output, or fault by clicking the type and selecting New....

QUESTION NO: 3

What are two mechanisms for storing user permissions to enable administration security on the Web Console?

- A. OAuth
- B. LDAP
- C. File
- D. Queue
- E. YAML

ANSWER: B E

QUESTION NO: 4

The mqsicommandconsole command is a required prerequisite for running which two commands?

- A. mqsichangeproperties
- B. mqsiAssemblyInstall
- C. mqsiprofile
- D. mqsimanagelnlcs
- E. mqsisetsecurity

ANSWER: B E

Explanation:

: The mqsicommandconsole command is required for the following commands:

- ☞ mqsiaddbrokerinstance
- ☞ mqsicreatebroker
- ☞ mqsimigratecomponents
- ☞ mqsisetsecurity
- ☞ mqsiAssemblyInstall
- ☞ mqsimanagexalinks
- ☞ mqsipackagebar

https://www.ibm.com/support/knowledgecenter/SSMKHH_9.0.0/com.ibm.etools.mft.doc/bn_13550_.htm

QUESTION NO: 5

Which statement is true regarding a security profiles policy and a security profile?

- A. A security profiles policy is a synonym for a security profile.
- B. A security profiles policy configures a security profile at run time
- C. A security profile configures how a security profiles policy is used by a message flow.
- D. A security profile configures the use of a security profile policy at deploy time.

ANSWER: B**QUESTION NO: 6**

Which two types of libraries exist within IBM App Connect Enterprise?

- A. Shared
- B. Exemplar
- C. Reference
- D. Static
- E. Dynamic

ANSWER: A D**Explanation:**

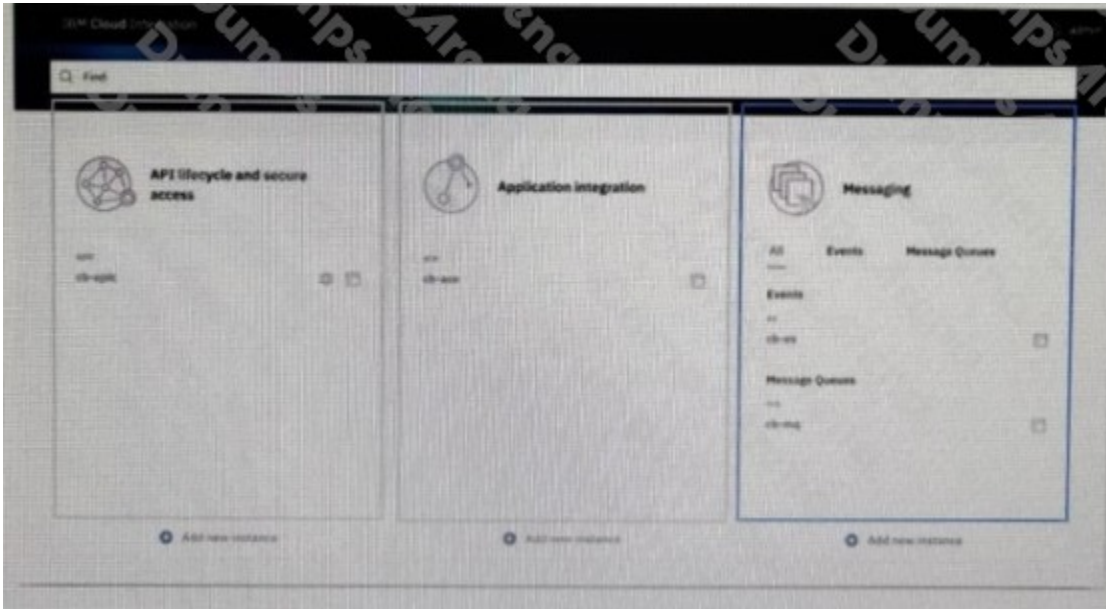
: Two types of library exist in IBM® App Connect Enterprise: shared libraries and static libraries. A shared library can be deployed directly to an integration server or in a BAR file with referencing applications. If that shared library is updated, the changes are immediately available to all applications or shared libraries that refer to it.

A static library is deployed with the application that references it. Each application that references that static library is deployed with its own private copy of that library. If a static library is updated, each application that references it must be repackaged and redeployed with the updated static library.

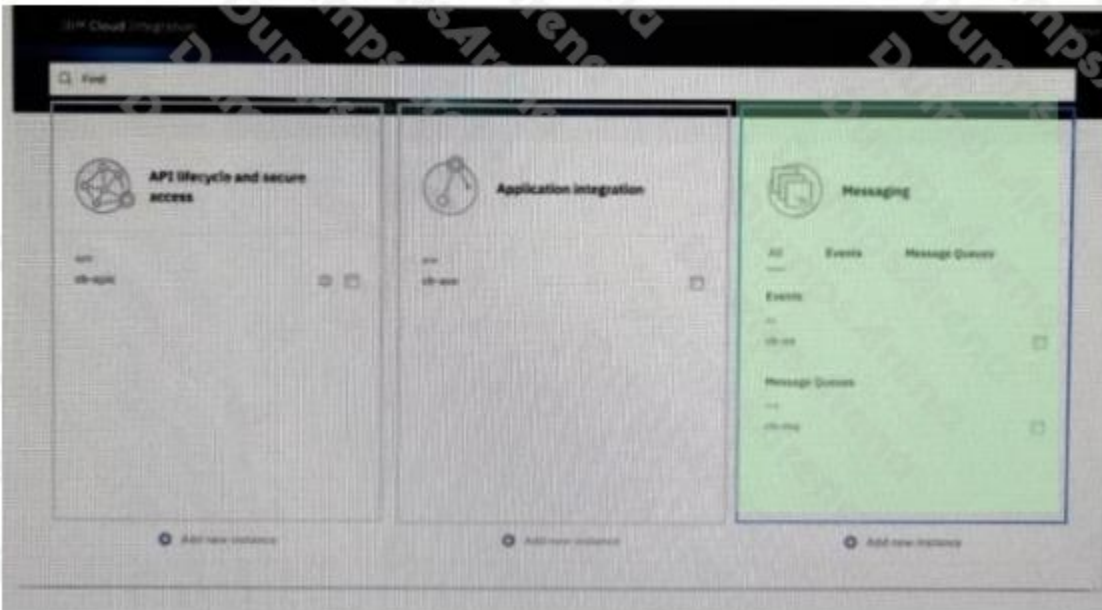
https://www.ibm.com/support/knowledgecenter/SSTTDS_11.0.0/com.ibm.etools.mft.doc/bc_23090_.html

QUESTION NO: 7 - (HOTSPOT)**HOTSPOT**

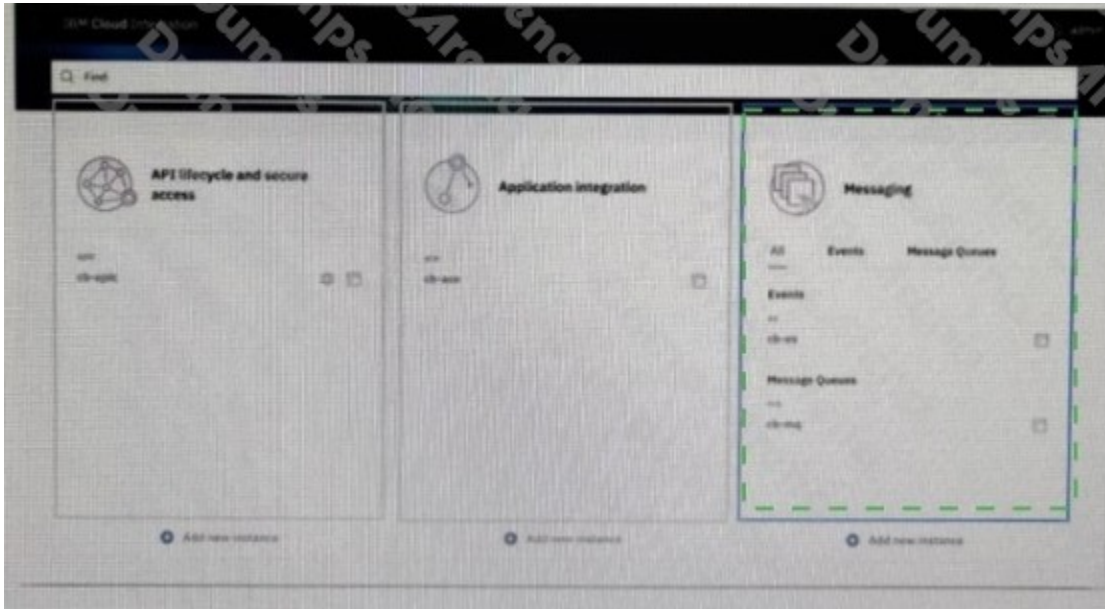
Which section in the Cloud Integration Platform Navigator should be clicked in order to install IBM MQ?



ANSWER:



Explanation:

**QUESTION NO: 8**

What are two methods for configuring a Highly Available IBM App Connect Enterprise installation?

- A. A Microsoft Cluster Server
- B. Multi-instance integration nodes with IBM MQ
- C. Network deployment mode
- D. Integration node clustering
- E. High Availability mode

ANSWER: A B**QUESTION NO: 9**

When splitting message flow processing between different integration servers how do the flows communicate?

- A. Using a switch server and connectivity agents
- B. Using switch addresses and node configuration
- C. Using a connectivity server and switch agents
- D. Using node addresses and node configuration

ANSWER: A

Explanation:

: If you are splitting processing between different integration servers, or between IBM App Connect Enterprise and IBM App Connect on IBM Cloud, your flows communicate by using a Switch server and connectivity agents.

https://www.ibm.com/support/knowledgecenter/SSTTDS_11.0.0/com.ibm.etools.mft.doc/cl2_3141_.htm

QUESTION NO: 10

Where does the data get pulled from during an extract migration in IBM App Connect Enterprise?

- A. Generated Project Interchange (PI) files
- B. An IBM MQ queue manager
- C. An existing Integration Server
- D. Deployed BAR files

ANSWER: C