

DUMPS ARENA

Designing Cisco Data Center Infrastructure (DCID)

Cisco 300-610

Version Demo

Total Demo Questions: 15

Total Premium Questions: 256

Buy Premium PDF

<https://dumpsarena.co>

sales@dumpsarena.co

sales@dumpsarena.co
dumpsarena.co

Topic Break Down

Topic	No. of Questions
Topic 1, New Update	111
Topic 2, Network Design	84
Topic 3, Compute Design	38
Topic 4, Storage Network Design	0
Topic 5, Automation Design	23
Total	256

QUESTION NO: 1

An engineer must integrate Layer 4 to Layer 7 services within Cisco ACI Fabric. The main requirement is to have a single point of configuration for network elements and firewall policies.

Which action meets these requirements?

- A. Define the service graph model as network policy mode.
- B. Deploy the firewalls in routed mode with PBR.
- C. Deploy the firewalls in transparent mode.
- D. Define the service graph model as service policy mode.

ANSWER: D**QUESTION NO: 2**

What are two advantages of using Cisco vPC over traditional access layer designs? (Choose two.)

- A. supports Layer 3 port channels
- B. disables spanning-tree
- C. no spanning-tree blocked ports
- D. uses all available uplink bandwidth
- E. maintains a single control plane

ANSWER: C D**Explanation:**

Reference:

https://www.cisco.com/c/dam/en/us/td/docs/switches/datacenter/sw/design/vpc_design/vpc_best_practices_design_guide.pdf

QUESTION NO: 3

An engineer deploys VMware ESXi hypervisor on blade servers. The virtual networking is managed by Cisco Nexus 1000V Series Switches.

Which configuration aligns with Cisco recommended practices for providing high availability and a maximum throughput to the VMware ESXi hosts?

- A. dual vNICs with static EtherChannel link aggregation
- B. dual vNICs with hardware fabric failover on the fabric interconnects
- C. dual vNICs with MAC pinning link aggregation
- D. dual vNICs with LACP link aggregation

ANSWER: D

QUESTION NO: 4

Which two statements describe Ethernet switching mode on Cisco UCS 6100 Series Fabric Interconnects? (Choose two.)

- A. STP runs on the uplink ports of each VLAN, as defined by PVSTP+.
- B. STP runs on the uplink ports of each VLAN, as defined by MSTP.
- C. The STP parameter configuration is unsupported.
- D. The STP parameter configuration is supported.
- E. STP runs on the server ports.

ANSWER: A C

Explanation:

Reference: https://www.cisco.com/c/en/us/solutions/collateral/data-center-virtualization/unified-computing/whitepaper_c11-701962.html

QUESTION NO: 5

A network engineer must design a Cisco HyperFlex solution based on these requirements:

- two clusters in the main data center consisting of five HyperFlex nodes
- one edge node for the remote branch
- cluster nodes that use one rack unit of space

Which two devices should be used in the remote branch cluster for this design? (Choose two.)

- A. UCS B200
- B. Gigabit Ethernet Switch
- C. Fabric Interconnect 6300
- D. HX240c

E. HX220c

ANSWER: A D

Explanation:

Reference: https://www.cisco.com/c/en_in/products/hyperconverged-infrastructure/hyperflex-hx240c-m4-nodes-ucs-b200-blade-servers/index.html

QUESTION NO: 6

What are two characteristics of VRF-Lite on the Cisco NX-OS platform? (Choose two.)

- A. Layer 3 interfaces can belong to multiple VRFs.
- B. VRF-Lite interfaces can be Layer 2.
- C. Overlapping IP addresses are permitted on different VRFs.
- D. Interfaces that belong to VRFs can be physical or logical.
- E. VRF-Lite interfaces support MPLS.

ANSWER: C D

Explanation:

Reference: https://www.cisco.com/c/en/us/td/docs/routers/connectedgrid/cgr1000/ios/software/15_4_1_cg/vrf_cgr1000.html

QUESTION NO: 7

An engineer must connect an existing Cisco UCS Fabric Interconnect to an IP-based storage array. The connection must be a port channel made directly between the fabric interconnect expansion module and the storage array. The engineer must also consider that the environment is running FCoE for storage and uses QoS to prioritize traffic.

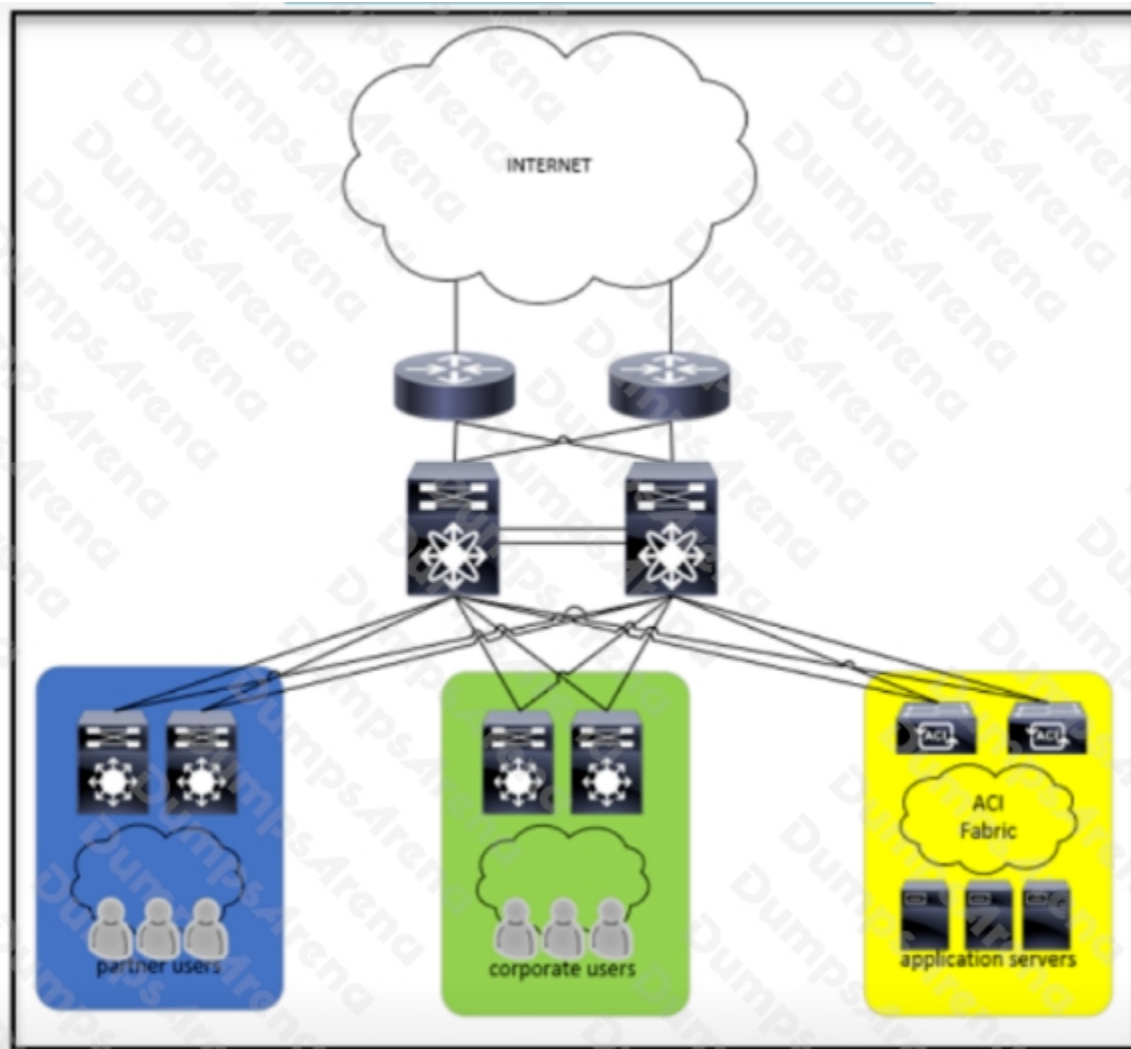
Which port type should be used to meet these requirements?

- A. network
- B. uplink
- C. server
- D. appliance

ANSWER: B

QUESTION NO: 8

Refer to the exhibit.



The security team created a new security policy that requires certain types of traffic to be subject to deep packet inspection. The traffic types are

- internet traffic to application servers
- internet traffic to corporate users
- partner network traffic to application servers
- partner network traffic to corporate users

Where must the next-generation firewalls be inserted to implement the new policy?

- A.** one-armed insertion from the core switch cluster
- B.** inline insertion between the edge router cluster and the core switch cluster
- C.** one-armed insertion from the ACI border leaf cluster

D. inline insertion between the user network switch cluster and the core cluster

ANSWER: C

QUESTION NO: 9 - (DRAG DROP)

DRAG DROP

Drag and drop the components from the left onto the descriptions on the right that indicate what occurs to Fibre Channel fabric when that component fails.

Select and Place:

fabric interconnect	The Fibre Channel fabric fails for all of the connected Cisco UCS chassis.
FEX	The Fibre Channel fabric fails for one Cisco UCS chassis.
FEX link of the fabric interconnect	The Fibre Channel fabric fails for some of the servers within a Cisco UCS chassis.
converged network adapter	The Fibre Channel fabric fails for one server.

ANSWER:

fabric interconnect	converged network adapter
FEX	FEX link of the fabric interconnect
FEX link of the fabric interconnect	fabric interconnect
converged network adapter	FEX

Explanation:

QUESTION NO: 10

What is a design consideration when implementing FSPF?

- A. Routes are based on the domain ID.
- B. Routes are based on the distance vector protocol.
- C. FSPF runs only on F Ports.
- D. FSPF runs on a per-chassis basis.

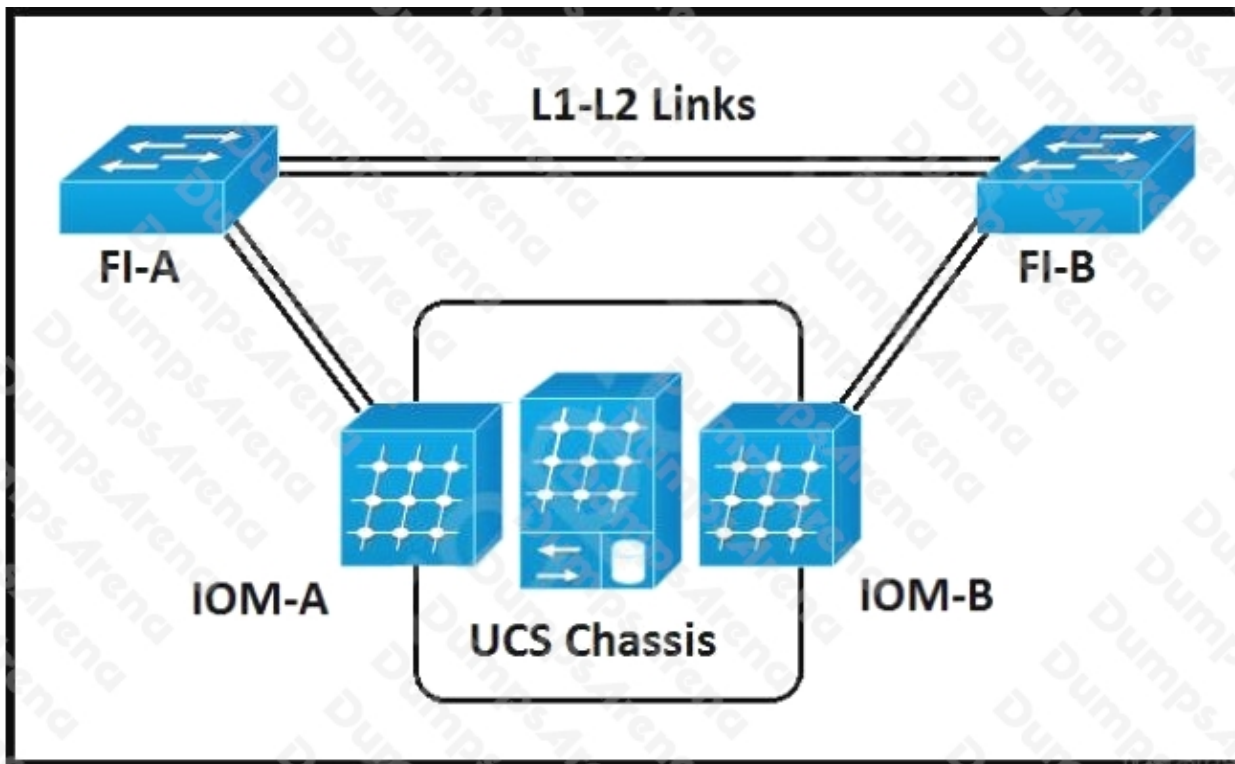
ANSWER: A**Explanation:**

Reference:

https://www.cisco.com/c/en/us/td/docs/switches/datacenter/mds9000/sw/5_0/configuration/guides/fabric/nxos/cli_fabric/fspf.html

QUESTION NO: 11

Refer to the exhibit.



A Cisco UCS chassis that has two IOMs is discovered. The chassis discovery policy creates a fabric port channel.

What is the result of this policy?

- A. Cisco UCS Manager creates two separate fabric port channels.
- B. Cisco UCS Manager creates a single fabric port channel.
- C. The port channel is disabled until an administrator enables it manually.
- D. Each uplink that connects an IOM is configured as a discrete link.

ANSWER: A

QUESTION NO: 12

An engineer must design a secondary site to prevent a catastrophic primary site failure. The applications must communicate across sites via the data link layer of the OSI model. The Layer 3 transport that is available for this solution consists of 10-Gb connections over Layer 3.

Which two solutions meet these requirements? (Choose two.)

- A. OTV
- B. vPC
- C. OSPF
- D. IS-IS
- E. VXLAN EVPN

ANSWER: A E

QUESTION NO: 13

An engineer enables the HSRP feature on a Cisco Nexus 7000 Series Switch. It must be ensured that the switch manages packets that are sent to the local vPC MAC address, remote vPC MAC address, and HSRP virtual MAC address.

Which command accomplishes this goal?

- A. peer-switch
- B. peer-gateway
- C. map-server
- D. hsrp preempt

ANSWER: D

QUESTION NO: 14

A cloud service provider provisioned four active/active data centers in various locations within the country at 50 miles between each data center. The data centers must provide redundant network infrastructure and always be available to customers.

Which two data center design steps must be used to meet these requirements? (Choose two.)

- A. Provide application hosting services to customers from the closest data center.
- B. Implement active cluster in data centers 1 and 2 and backup in 3 and 4.
- C. Use asynchronous replication between data centers 1 and 2.
- D. Deploy database services in data center 1 and application layer to other data centers.
- E. Configure application data replication to all backup data centers.

ANSWER: A E**QUESTION NO: 15**

An engineer configured the OSPF protocol in the vPC topology. During the catastrophic failure of one of the vPC member switches, the traffic was routed to a black hole. This route was caused by the long convergence time caused by the delay of the vPC member switch reboot. After the failure, the engineer rebooted both switches, but the secondary switch powered on before the primary one. It caused all the vPCs to be shut down due to consistency-check violations.

Which two features must be used to prevent these situations from happening in the future? (Choose two.)

- A. peer-gateway
- B. ip arp synchronize
- C. delay restore
- D. auto-recovery
- E. system priority

ANSWER: C D