

DUMPS ARENA

OMG Certified UML Professional (OCUP 2) - Intermediate Level

OMG OMG-OCUP2-INT200

Version Demo

Total Demo Questions: 10

Total Premium Questions: 133

Buy Premium PDF

<https://dumpsarena.co>

sales@dumpsarena.co

sales@dumpsarena.co
dumpsarena.co

QUESTION NO: 1

In the exhibit, what are the valid traces for Cont1?

- A. either two p messages or two q messages
- B. either p followed by q or q followed by p
- C. only a p message followed by a q message
- D. any combination of two p messages and two q messages

ANSWER: B**QUESTION NO: 2**

What is true about a pseudostate?

- A. a state that can be specialized for different purposes
- B. a state entry or exit point
- C. a specification of a potential state
- D. not a state but a vertex

ANSWER: D**QUESTION NO: 3**

What statements are true about a composite structure? (Choose two.)

- A. Destroying an instance of a structured classifier normally destroys instances of its parts.
- B. Structured classifiers cannot contain instances of structured classifiers.
- C. The behavior of a structured classifier must be completely defined through the collaboration of owned or referenced instances.
- D. Collaborations are structured classifier.
- E. A structured classifier is also an encapsulated classifier.

ANSWER: A D

QUESTION NO: 4

Which statements apply to arguments of interaction occurrences? (Choose two.)

- A. Arguments to interaction occurrences only apply when the corresponding interaction is value returning.
- B. The arguments may be constants (literals).
- C. An argument of an interaction occurrence must only have simple types.
- D. Arguments to interaction occurrences must always correspond to IN-parameters.
- E. The arguments may refer to parameters of the enclosing interaction.

ANSWER: B E

QUESTION NO: 5

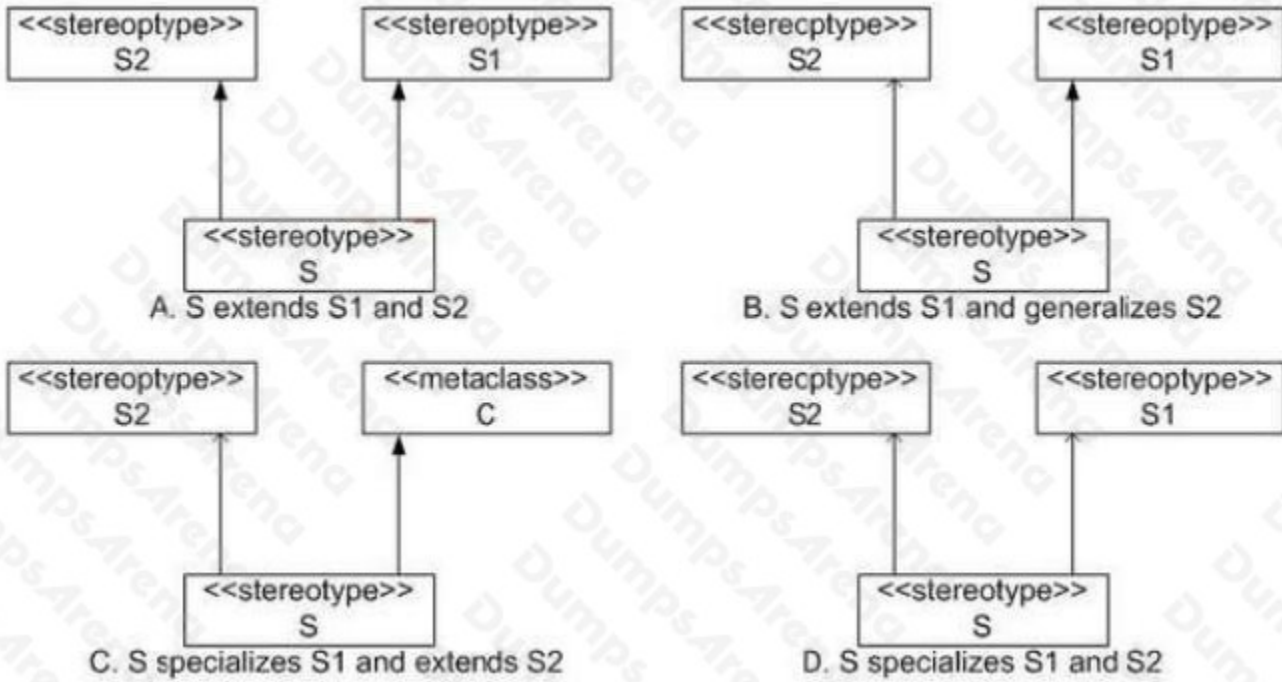
What does a structured node contain? (Choose two.)

- A. messages
- B. edges
- C. classes
- D. nodes
- E. lifelines
- F. States

ANSWER: B D

QUESTION NO: 6

Which is a correct representation of multiple extension and generalization/specialization? (Choose two.)

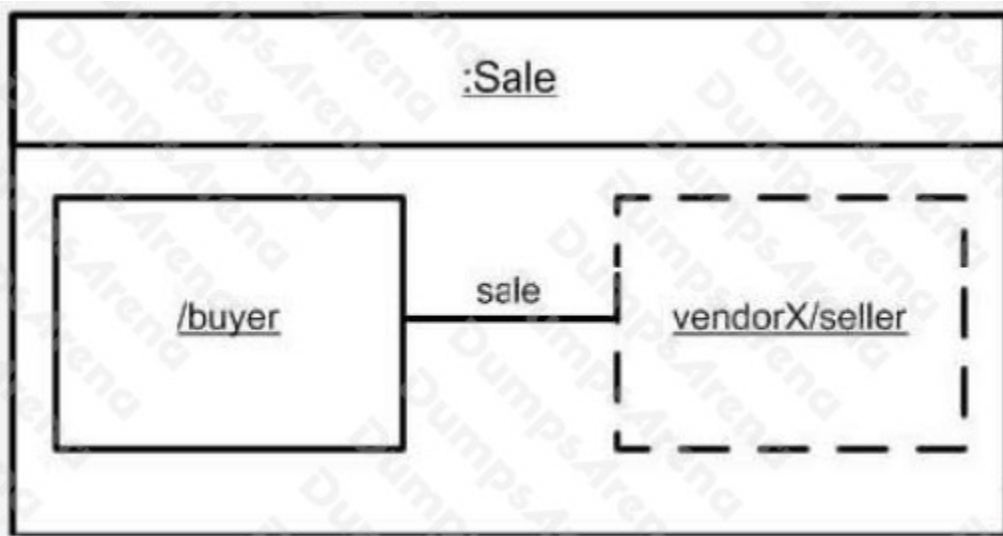


- A. A
- B. B
- C. C
- D. D

ANSWER: C D

QUESTION NO: 7

What is wrong with the Sale instance diagram shown in the exhibit?



- A. Buyer instance name is missing.
- B. Link name should be underlined.
- C. Sale instance name is missing.
- D. Link should be shown with a dashed line.
- E. Types of the buyer and seller parts are missing.

ANSWER: B

QUESTION NO: 8

What is correct about a profile? (Choose two.)

- A. is applied to a package
- B. cannot be used without its reference model
- C. can dynamically change its reference metamodel
- D. is applied to a reference metamodel

ANSWER: A B

QUESTION NO: 9

What is true when an event does not trigger any transitions in the current state?

- A. The state machine is not well formed.

- B. The handling of the situation is a semantic point.
- C. An exception is raised.
- D. The event is discarded.
- E. The event is deferred until a state is reached that responds to that trigger.

ANSWER: D

QUESTION NO: 10

What does a loop node consist of?

- A. parameters
- B. partitions
- C. bodyPart nodes
- D. clauses
- E. behaviors
- F. guards

ANSWER: C