

DUMPS ARENA

CompTIA Network+ 2018

CompTIA N10-007

Version Demo

Total Demo Questions: 20

Total Premium Questions: 933

Buy Premium PDF

<https://dumpsarena.co>

sales@dumpsarena.co

sales@dumpsarena.co
dumpsarena.co

QUESTION NO: 1

Which of the following storage network technologies has the HIGHEST throughput?

- A. FCoE
- B. InfiniBand
- C. iSCSI
- D. OC3

ANSWER: B**QUESTION NO: 2**

Which of the following would be the BEST way to track all the networks that are in use at an organization?

- A. DHCP
- B. IPAM
- C. Scope options
- D. Lookup zone

ANSWER: B**QUESTION NO: 3**

Which of the following DNS records needs to be configured for SMTP traffic?

- A. MX
- B. CNAME
- C. AAAA
- D. PTR

ANSWER: A

QUESTION NO: 4

A technician has completed configuration on a new satellite location. The location has a new firewall and a small internal network. The technician has been asked to perform basic vulnerability testing. Which of the following tools would BEST assist the technician in verifying the security of the site?

- A. Packet sniffer
- B. Bandwidth tester
- C. Port scanner
- D. Protocol analyzer

ANSWER: C**QUESTION NO: 5**

Which of the following can be done to implement network device hardening? (Choose two.)

- A. Implement spanning tree
- B. Perform VLAN hopping
- C. Patch and update
- D. Perform backups
- E. Enable port mirroring
- F. Change default admin password

ANSWER: C F**QUESTION NO: 6**

A technician needs a way to allow clients to access a new application server on the network. Which of the following should the technician set up to achieve this objective? (Choose two.)

- A. DHCP DNS Server
- B. DNS SRV record
- C. DNS reverse zone
- D. DHCP scope option
- E. DHCP IP reservation

F. Cloud-hosted DNS

ANSWER: B E

QUESTION NO: 7 - (HOTSPOT)

HOTSPOT

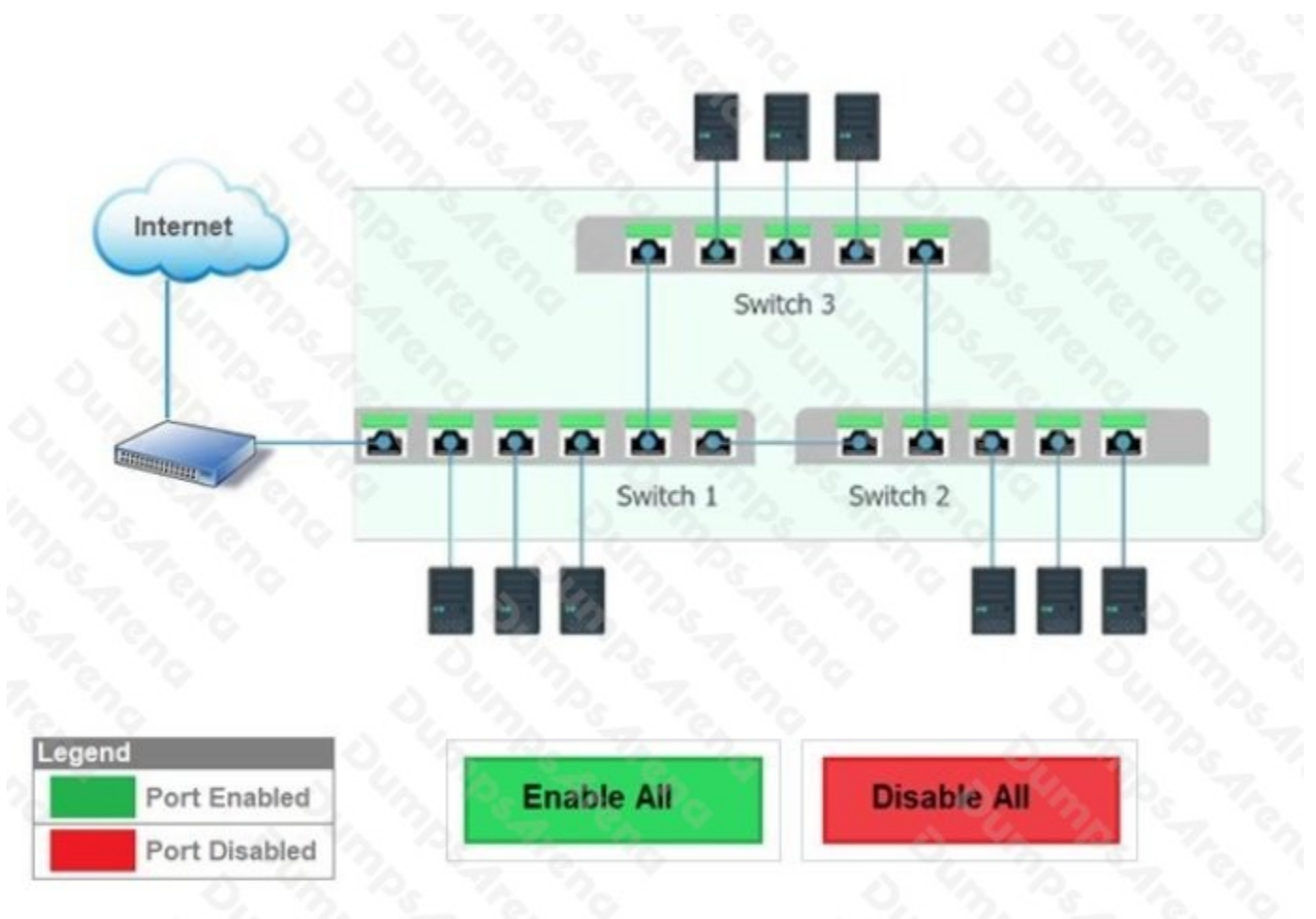
Workstations are unable to access the Internet after a recent power outage. Configure the appropriate devices to ensure All workstations have Internet connectivity.

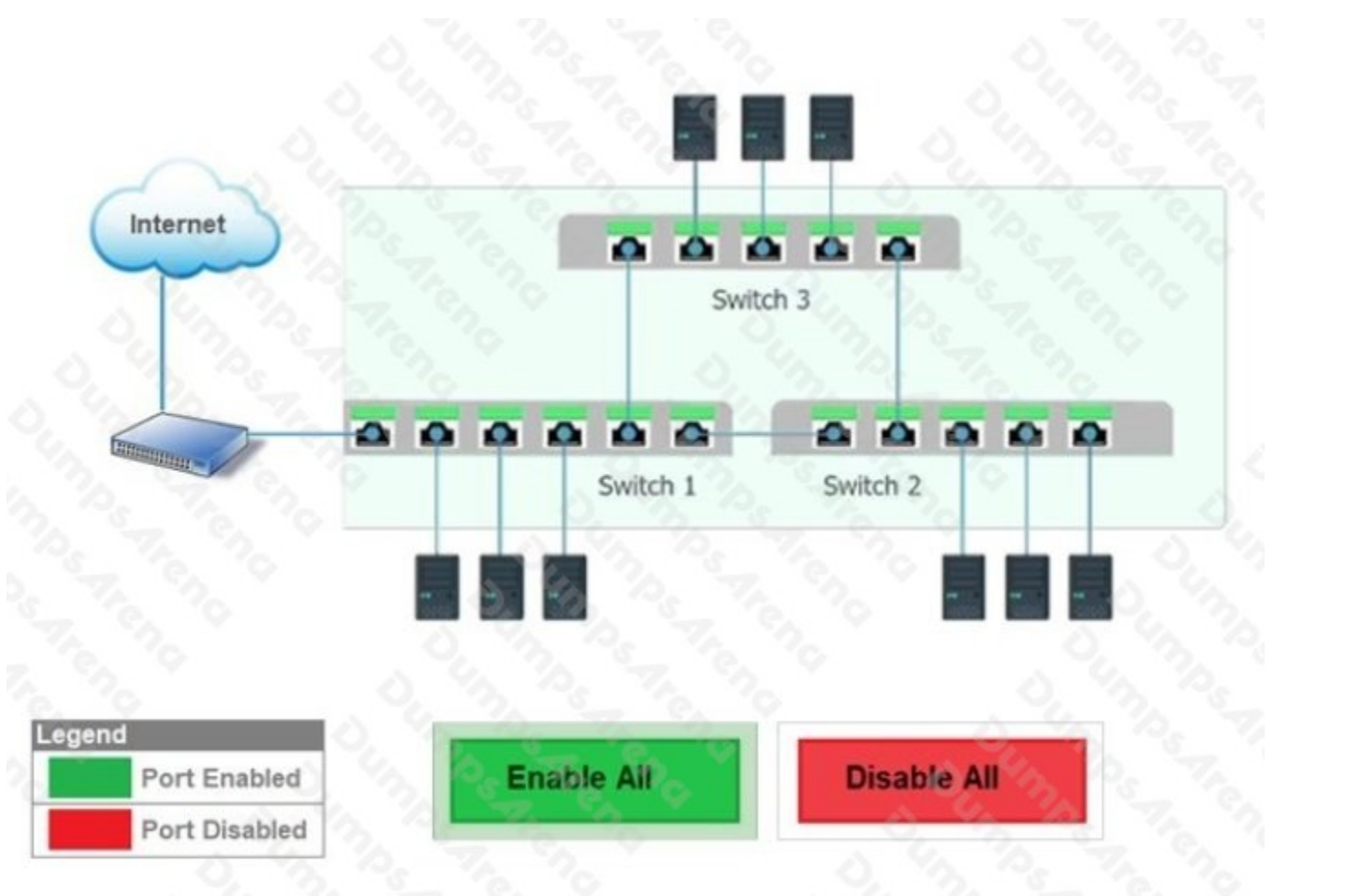
Instructions

All ports can be enabled (fill) or disabled (no fill).

If at any time you would like to bring back the initial state of the simulation, please click the Reset All button.

Hot Area:



ANSWER:**QUESTION NO: 8**

A technician is making the population of routers more secure. Which of the following are the BEST options for making authentication more secure? (Choose two.)

- A. Add a login banner.
- B. Disable unused services.
- C. Upgrade the firmware.
- D. Disable Telnet.
- E. Implement AAA.
- F. Disable SSH.

ANSWER: D E

QUESTION NO: 9 - (DRAG DROP)

DRAG DROP

You have been tasked with testing a CAT5e cable. A summary of the test results can be found on the screen.

Cable Test Result

1.2	open	7ft
3.6	short	7ft
4.5	open	7ft
7.8	open	7ft

Instructions

Step 1: Select the tool that was used to create the cable test results.

Step 2: Interpret the test results and select the option that explains the results. After you are done with your analysis, click the 'Submit' button.

Step 3: You have determined that the original crimp is faulty. Re-crimp the cable connector using the T568B cabling standard. Choose the correct cable for each pin in the connector by clicking on the pin and selecting a cable color.

If at any time you would like to bring back the initial state of the simulation, please click the Reset All button.

Select and Place:

Answer Area

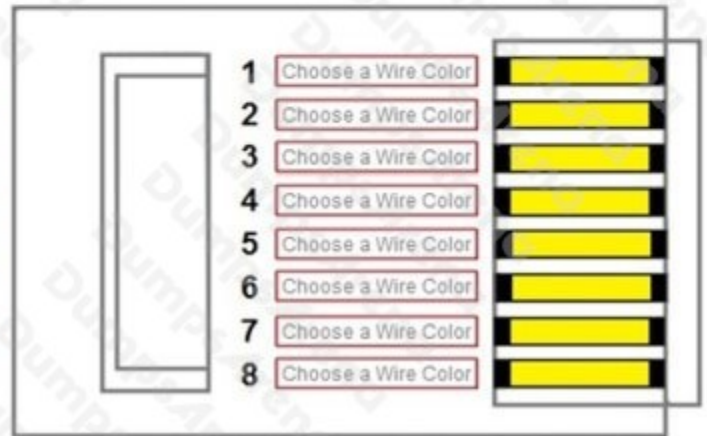
Step 1 Select the tool that was used to create the cable test results.

- Cable Certifier
- Punch Down Tool
- Crimper
- Toner Probe
- OTDR
- Multimeter
- Protocol Analyzer

Step 2 Interpret the test results and select the option that explains the results.

- Correctly crimped cable
- Incorrectly crimped cable

Step 3 You have determined that the original crimp is faulty. Re-crimp the cable connector using the T568B cabling standard. Choose the correct cable for each pin in the connector by clicking on the pin and selecting a cable color.



ANSWER:

Answer Area

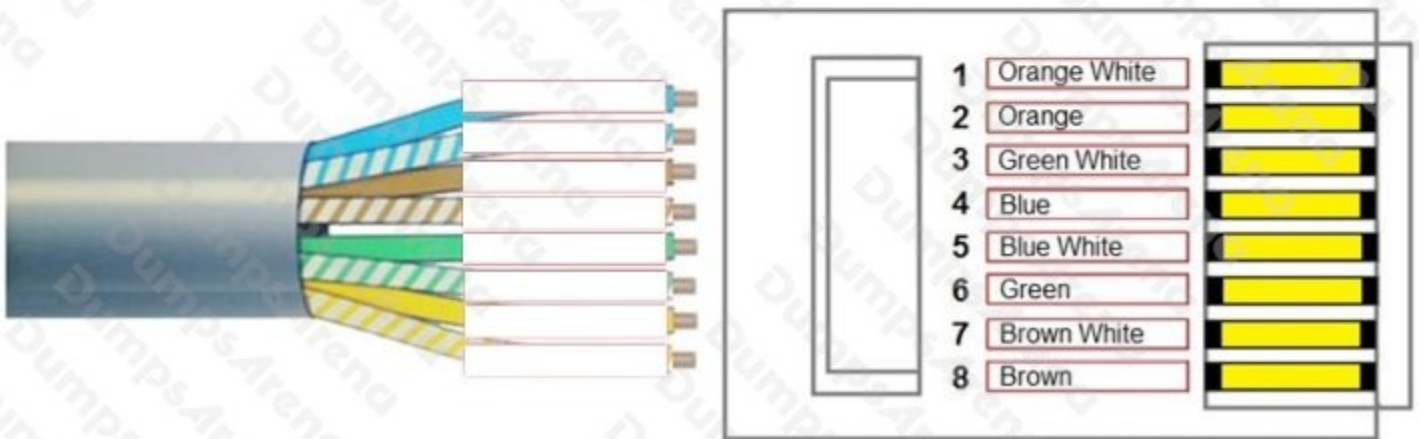
Step 1 Select the tool that was used to create the cable test results.

<input type="checkbox"/>	Cable Certifier
<input type="checkbox"/>	Punch Down Tool
<input type="checkbox"/>	Crimper
<input type="checkbox"/>	Toner Probe
<input type="checkbox"/>	OTDR
<input type="checkbox"/>	Multimeter
<input type="checkbox"/>	Protocol Analyzer

Step 2 Interpret the test results and select the option that explains the results.

<input type="checkbox"/>	Correctly crimped cable
<input type="checkbox"/>	Incorrectly crimped cable

Step 3 You have determined that the original crimp is faulty. Re-crimp the cable connector using the T568B cabling standard. Choose the correct cable for each pin in the connector by clicking on the pin and selecting a cable color.



Explanation:

Reference: <https://www.comms-express.com/infozone/article/t568a-and-t568b/>

QUESTION NO: 10

When deploying UTP cables in a networking environment, which of the following are acceptable standards? (Choose two.)

- A. 10Base2
- B. 10Base5

- C. 10GBaseT
- D. 1000BaseLX
- E. 1000BaseSX
- F. 1000BaseT

ANSWER: C F

QUESTION NO: 11

When using a network monitoring system, a network technician notices that a switch returns many object identifiers that do not have descriptions. Which of the following should be imported into the monitoring system to describe these object identifiers?

- A. SNMPv3
- B. SIEM
- C. MIB
- D. SYSLOG

ANSWER: C

QUESTION NO: 12 - (SIMULATION)

SIMULATION

After recent changes to the pictured network, several users are unable to access the servers. Only PC1, PC2, PC3, and PC4 are clickable and will give you access to the command prompt and the adapter configuration tabs.

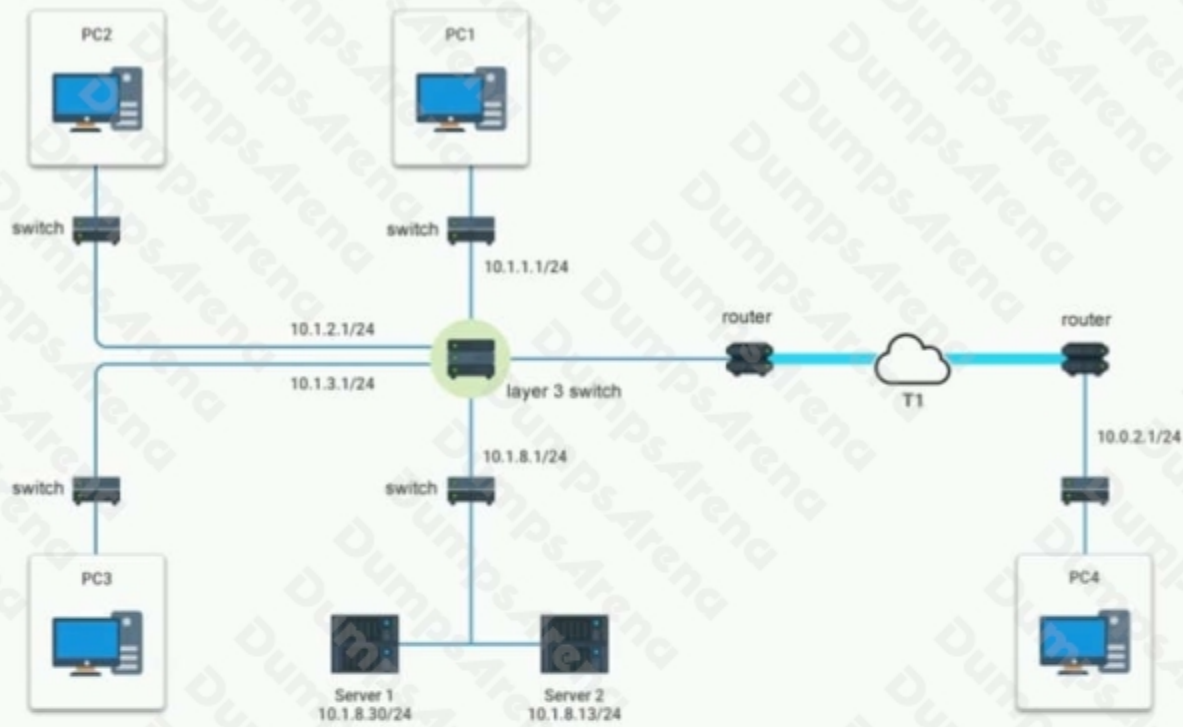
INSTRUCTIONS

Verify the settings by using the command prompt, after making any system changes.

Next, restore connectivity by making the appropriate changes to the infrastructure.

If at any time you would like to bring back the initial state of the simulation, please click the Reset All button.

Network Diagram



PC1

Adapter Configuration **Command Prompt**

You can get IP settings automatically if your network supports this capability. Otherwise, you need to ask your network administrator for the appropriate settings.

Obtain an IP address automatically

Use the following IP address

IP address	10	.	1	.	1	.	129
Subnet mask	255	.	255	.	255	.	0
Default gateway	10	.	1	.	1	.	1

Obtain DNS server address automatically

Use the following DNS server addresses

Obtain DNS server addresses automatically

Use the following DNS server addresses

Preferred DNS server: 10 . 1 . 8 . 13

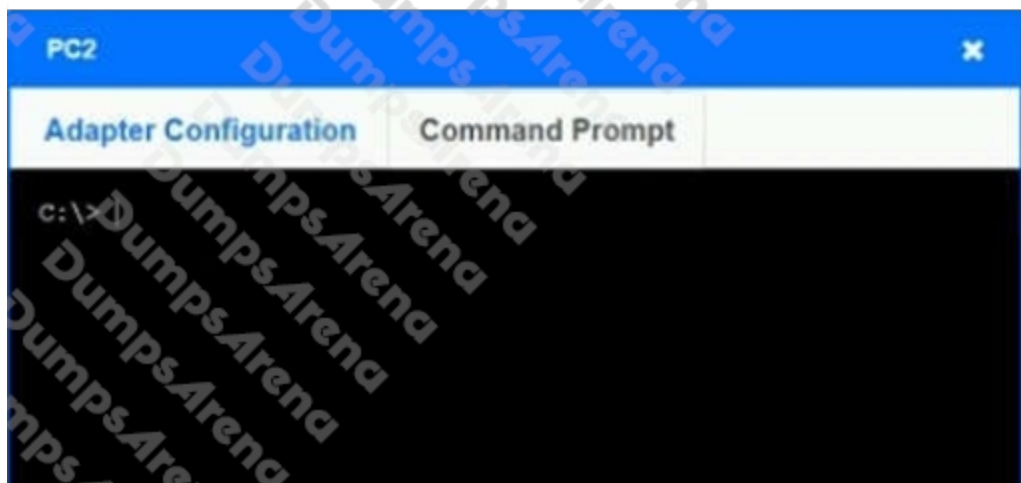
Alternate DNS server:

Validate settings upon exit

Advanced...

APPLY CANCEL







PC3

Adapter Configuration | **Command Prompt**

You can get IP settings automatically if your network supports this capability. Otherwise, you need to ask your network administrator for the appropriate settings.

Obtain an IP address automatically

Use the following IP address

IP address	10	.	1	.	3	.	129
Subnet mask	255	.	255	.	255	.	128
Default gateway	10	.	1	.	3	.	1

Obtain DNS server address automatically

Use the following DNS server addresses

Preferred DNS server	10	.	1	.	8	.	13
Alternate DNS server		.		.		.	

Validate settings upon exit

Advanced...

APPLY CANCEL

PC3

Adapter Configuration | **Command Prompt**

```
c:\>
```



PC4

Adapter Configuration **Command Prompt**

You can get IP settings automatically if your network supports this capability. Otherwise, you need to ask your network administrator for the appropriate settings.

Obtain an IP address automatically

Use the following IP address

IP address	10	.	0	.	2	.	129
Subnet mask	255	.	255	.	255	.	0
Default gateway	10	.	1	.	2	.	1

Obtain DNS server address automatically

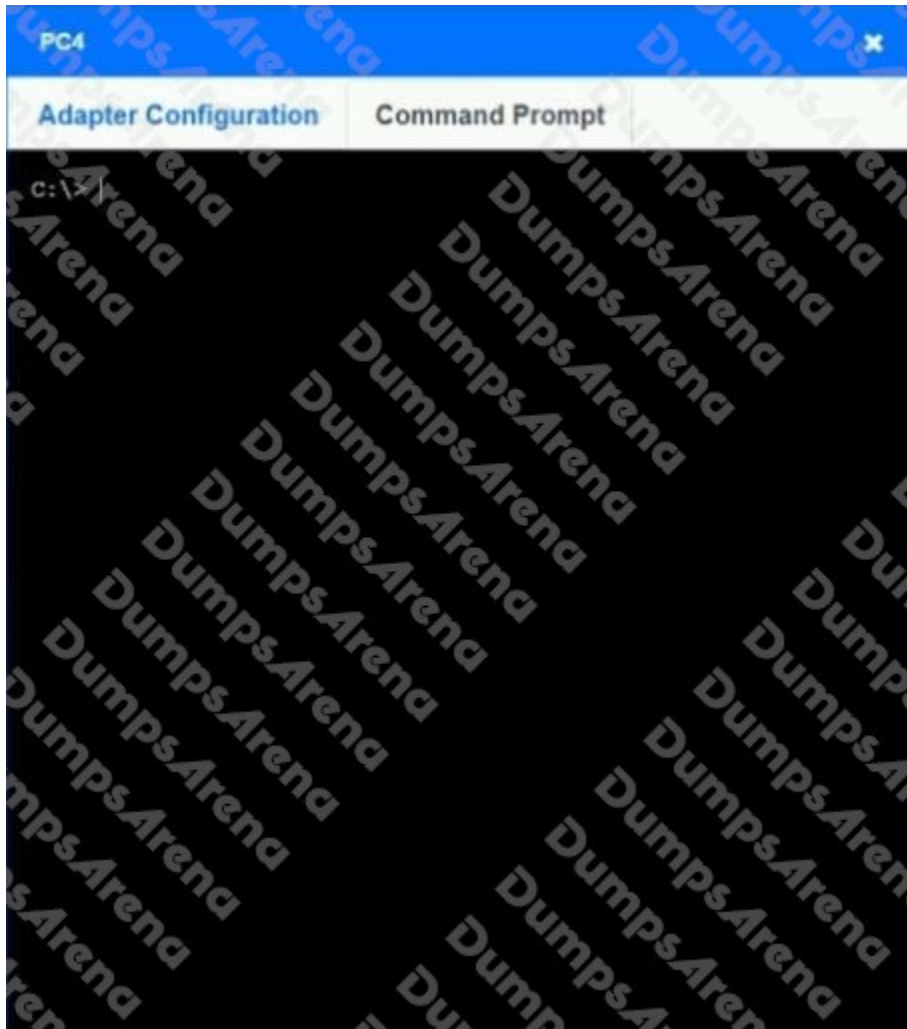
Use the following DNS server addresses

Preferred DNS server	10	.	1	.	8	.	13
Alternate DNS server		.		.		.	

Validate settings upon exit

Advanced...

APPLY CANCEL



ANSWER: See explanation below.

Explanation:

On PC3, change the subnet mask to 255.255.255.0. When it is set to 255.255.255.128, then the PC with a .129 address will not be on the same subnet as the default gateway which is .1 On PC4, change the default gateway to 10.0.2.1. It has been incorrectly set as 10.1.2.1.

QUESTION NO: 13

A technician is setting up VoIP phones on a wireless network. Users report that calls are choppy and sometimes dropped. The technician has measured two characteristics using simple command-line tools that verify the problem. Which of the following characteristics did the technician measure? (Choose two.)

- A. Reflection
- B. Latency
- C. Interference

- D. Packet loss
- E. Signal-to-noise ratio
- F. Attenuation

ANSWER: B D

QUESTION NO: 14

A typical cell tower will have microwave and cellular antennas. Which of the following network topologies do these represent? (Choose two.)

- A. Point-to-multipoint
- B. Bus
- C. Point-to-point
- D. Mesh
- E. Peer-peer
- F. Ring

ANSWER: C D

QUESTION NO: 15

A network manager notices several outages have occurred due to modifications that were made without being properly tested. Which of the following will the network manager MOST likely implement to prevent future occurrences?

- A. Logical diagram
- B. Change management
- C. IDF documentation
- D. Configuration baseline

ANSWER: B

QUESTION NO: 16

A company is expanding and building a new remote branch office. Marketing will need 78 IP addresses, finance will need 150 IP addresses, legal will need 39 IP addresses, and R&D will need 12 IP addresses. The network administrator gives the

technician a network of 172.16.48.0/23 and wants the technician to use VLSM for the design. Which of the following are possible solutions? (Choose three.)

- A. The marketing department should receive a /25 network.
- B. The R&D department should have 172.16.49.207 as a broadcast address.
- C. The R&D department should receive a /27 network.
- D. The finance department should have 172.16.49.127 as a broadcast address.
- E. The marketing department should have usable IPs ranging from 172.16.49.129 to 172.16.49.190.
- F. The legal department should have a first usable IP address of 172.16.49.190
- G. The legal department should have usable IPs ranging from 172.16.49.129 to 172.16.49.190.
- H. The R&D department should have a last usable IP address of 172.16.49.190.

ANSWER: A B G

QUESTION NO: 17

An employee, who is using a laptop connected to the wireless network, is able to connect to the Internet but not to internal company resources. A systems administrator reviews the following information from the laptop:

IP: 192.168.1.100

MASK: 255.255.255.0

ROUTER: 192.168.1.1

The administrator was expecting to see a network address within 10.100.0.0/23, which is consistent with the company's wireless network. The network administrator verifies the company's wireless network is configured and working properly. Which of the following is the MOST likely cause of this issue?

- A. Interference
- B. Security type mismatch
- C. Wrong SSID
- D. Channel overlap

ANSWER: C

QUESTION NO: 18

A network technician is configuring a firewall access list to secure incoming connections to an email server. The internal address of this email server is 192.168.1.143. The firewall should allow external email servers to send email to the email

server. The email server also supports client access via a web browser. Only secure protocols should be used, and only the necessary ports should be open. Which of the following ACL rules should be configured in the firewall's WAN port? (Choose two.)

- A. Permit 192.168.1.143.25
- B. Permit 192.168.1.143.80
- C. Permit 192.168.1.143.110
- D. Permit 192.168.1.143.143
- E. Permit 192.168.1.143.443
- F. Permit 192.168.1.143.587

ANSWER: E F

QUESTION NO: 19

A technician installed a new fiber optic cable to connect two sites. Although there is a link light on the port at each site, the customer reports traffic is dropping intermittently. Which of the following should the technician do NEXT to troubleshoot the issue?

- A. Check the interfaces for CRC errors.
- B. Check for a VLAN mismatch.
- C. Check for a TX/RX reverse on the connector.
- D. Check that the pinout is correct.

ANSWER: A

QUESTION NO: 20

A network administrator needs to access a remote site and log into the site switch using secure methods. The administrator first has to gain access to the server GUI. Which of the following access control methods will be used?

- A. RDP
- B. VPN
- C. Telnet
- D. SSH

ANSWER: A