

# DUMPS ARENA

**CompTIA Cloud+ (CV0-002)**

**CompTIA CV0-002**

**Version Demo**

**Total Demo Questions: 15**

**Total Premium Questions: 352**

**Buy Premium PDF**

**<https://dumpsarena.co>**

**[sales@dumpsarena.co](mailto:sales@dumpsarena.co)**

**sales@dumpsarena.co**  
**dumpsarena.co**

**QUESTION NO: 1**

A company has been migrating a significant number of its on-premises applications to various SaaS providers. The IT department has noticed the following:

1. User account management has become challenging.
2. User account compromises have increased.
3. Accessing various SaaS applications is challenging.

Which of the following should the IT security department implement to BEST resolve the issue? (Choose three.)

- A. Single sign-on
- B. Multifactor authentication
- C. Network intrusion prevention system
- D. Password synchronization
- E. Federation
- F. IPSec tunnel to the SaaS providers
- G. VPN to SaaS providers

**ANSWER: B D E****QUESTION NO: 2**

After load testing on the QA environment, which showed good performance results with 10,000 users, the new version was installed in the production environment. However, users are reporting performance issues, and there are only 7,000 users currently utilizing the application. The configuration of each environment is shown in the table below.

	PROD	QA
Compute	10 VMs x 8vCPU 64GB RAM	10 VMs x 8vCPU 32GB RAM
Storage	All-flash array	All-flash array
Protection	Synchronous replication to another town	Asynchronous replication to another state

Which of the following is the MOST likely cause of differing performance in the QA and PROD environments?

- A. The load testing does not cover all user scenarios.
- B. Synchronous replication is slowing down production.

- C. More RAM needs to be configured for the QA VMs to match PROD.
- D. The QA environment should have been tested with 7000 users.

**ANSWER: A**

### QUESTION NO: 3

A cloud engineer is migrating an application running on an on-premises server to a SaaS solution. The cloud engineer has validated the SaaS solution, as well as created and tested a migration plan. Which of the following should the cloud engineer do before performing the migration? (Choose two.)

- A. Document in the change management database.
- B. Document the test findings.
- C. Gain approval from the CAB.
- D. Create a rollback plan.
- E. Submit a request for change.
- F. Agree upon a change windows.
- G. Establish a plan of action.

**ANSWER: D G**

### QUESTION NO: 4

A cloud service company is proposing a solution to a major sporting venue. The solution offers 99.999% availability during special events, which is proven through specialized testing. Which of the following techniques should be applied to confirm the high availability claimed by the company? (Choose two.)

- A. Vulnerability testing
- B. Penetration testing
- C. Load testing
- D. Failover testing
- E. Integration testing

**ANSWER: B D**

**QUESTION NO: 5**

A large finance firm processes three times as many transactions in December of each year. The transactions are processed in a private cloud. Management wants to avoid adding permanent resources to accommodate the single month increase. Which of the following is the BEST way to meet the need?

- A. Migrate all transaction processing to a public cloud and size capacity for the largest seasonal needs.
- B. Keep current capacity for processing, but implement cloud bursting to auto scale the resources without having to invest in infrastructure.
- C. Determine usage patterns over time and virtualize the processing traffic to give room for seasonal changes in resource demand.
- D. Determine usage patterns for the seasonal capacity needs and add physical resources to allow additional processing.

**ANSWER: B****QUESTION NO: 6 - (SIMULATION)****SIMULATION**

A company has decided to scale its e-commerce application from its corporate datacenter to a commercial cloud provider to meet an anticipated increase in demand during an upcoming holiday. The majority of the application load takes place on the application server under normal conditions. For this reason, the company decides to deploy additional application servers into a commercial cloud provider using the on-premises orchestration engine that installs and configures common software and network configurations. The remote computing environment is connected to the on-premises datacenter via a site-to-site IPsec tunnel. The external DNS provider has been configured to use weighted round-robin routing to load balance connections from the Internet.

During testing, the company discovers that only 20% of connections completed successfully.

Review the network architecture and supporting documents and fulfill these requirements:

Part 1:

1. Analyze the configuration of the following components: DNS, Firewall1, Firewall2, Router1, Router2, VPN and Orchestrator Server.
2. Identify the problematic device(s).

Part 2:

3. Identify the correct options to provide adequate configuration for hybrid cloud architecture.

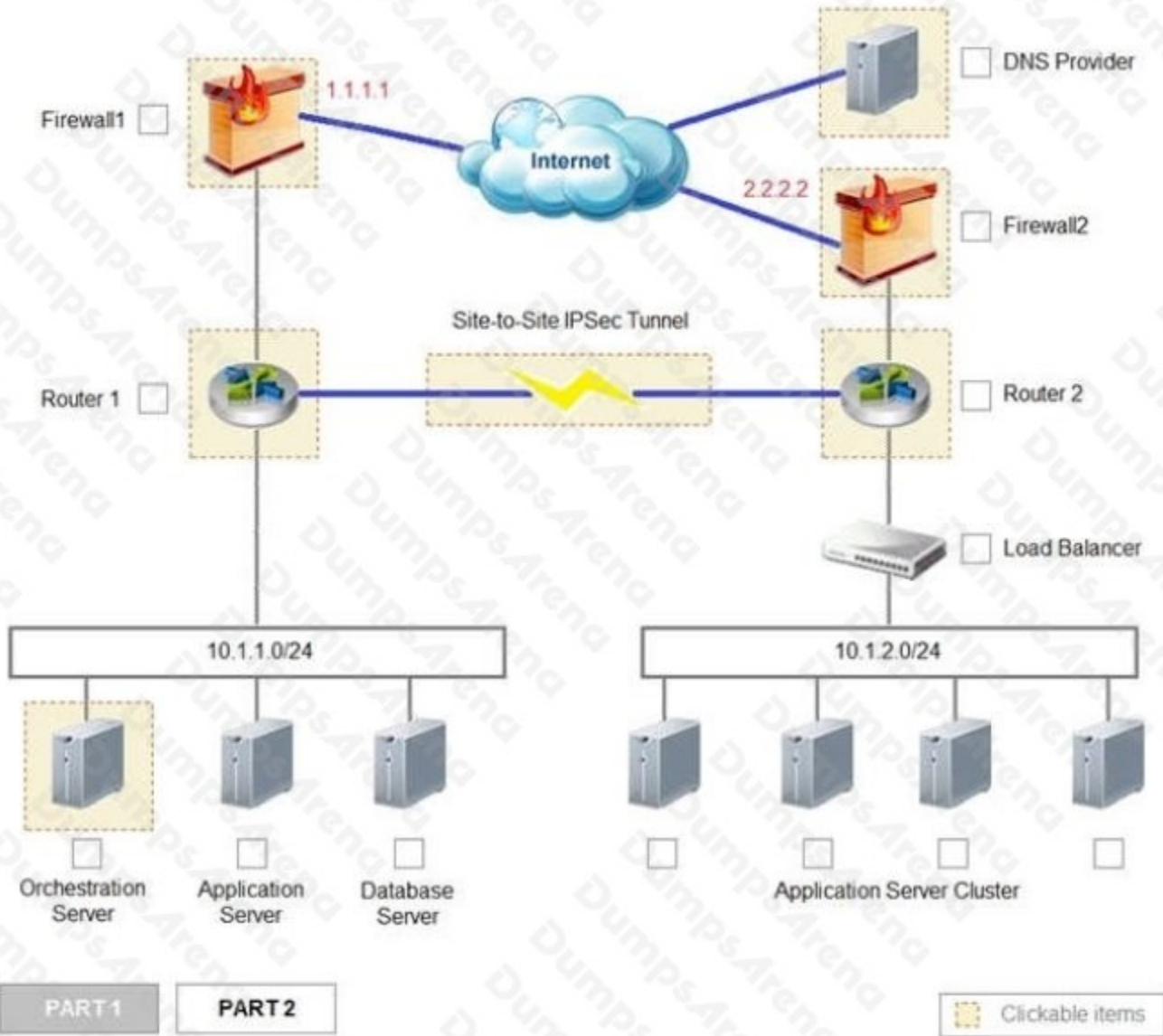
Instructions:

If at any time you would like to bring back the initial state of the simulation, please select the Reset button. When you have completed the simulation, please select the Done button to submit. Once the simulation is submitted, please select the Next button to continue.

Simulation

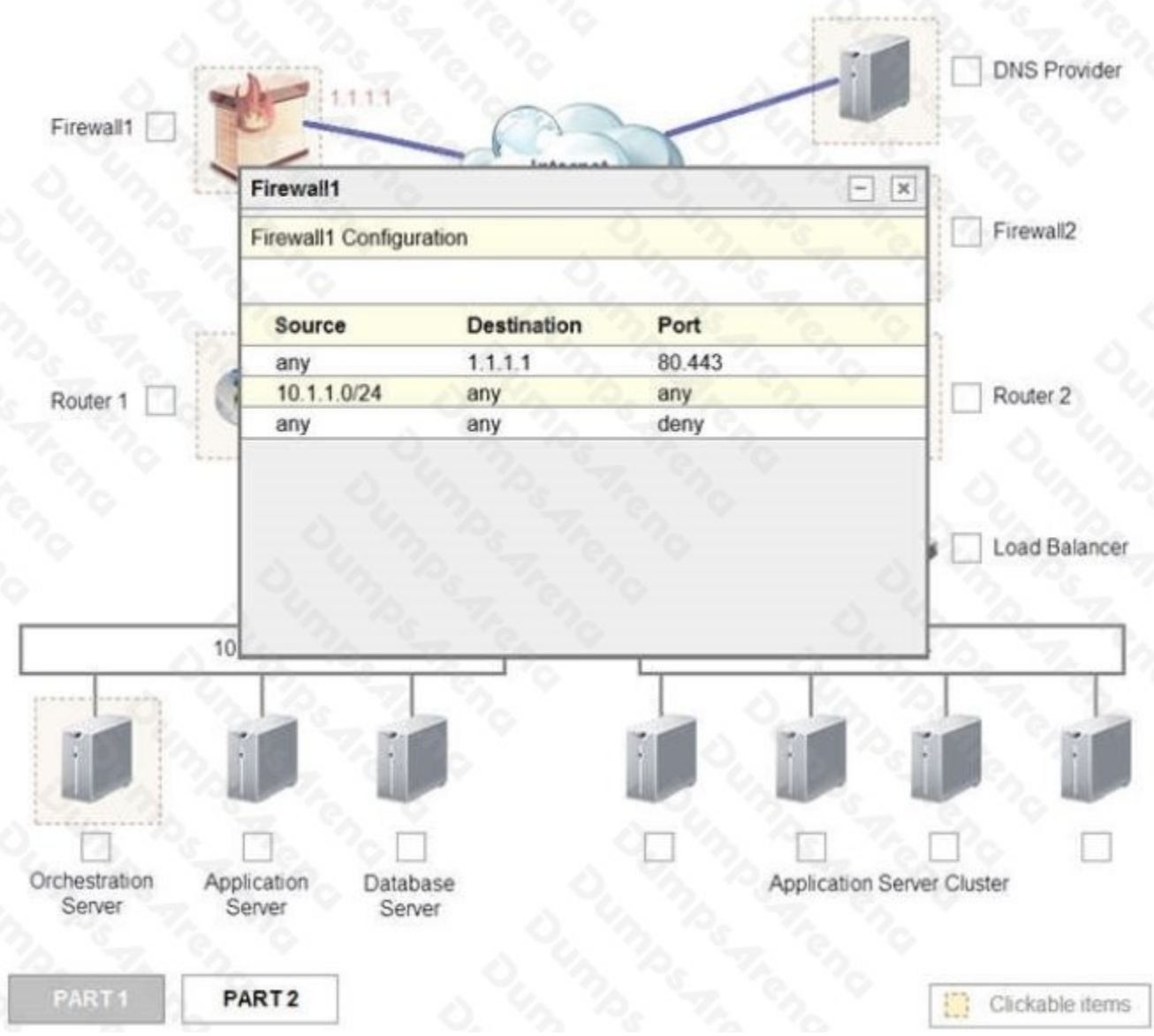
PART 1

Instruction: Click on each device to review more information of DNS, Firewall1, Firewall2, Router1, Router2, VPN and Orchestration Server.



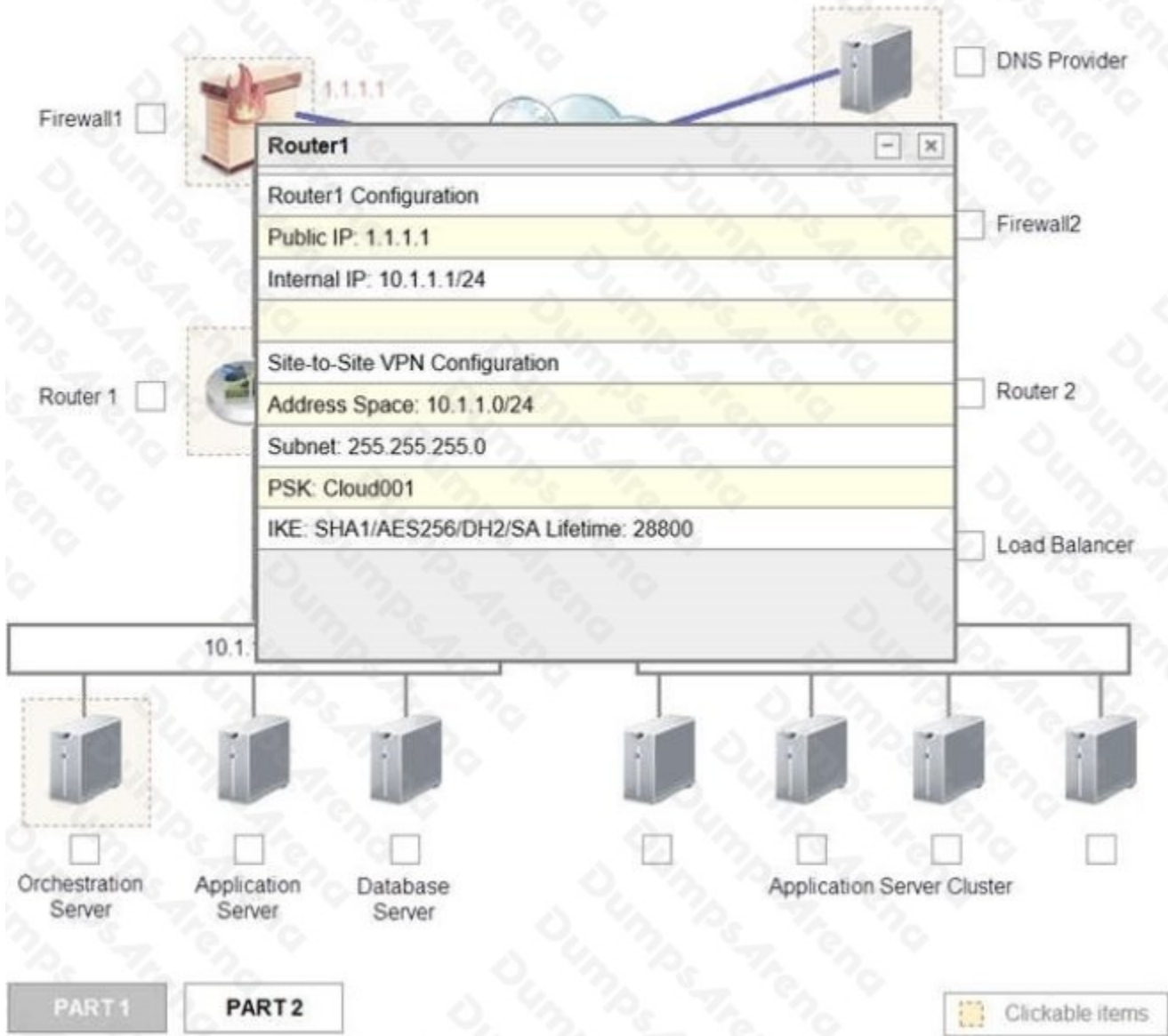
PART 1

Instruction: Click on each device to review more information of DNS, Firewall1, Firewall2, Router1, Router2, VPN and Orchestration Server.



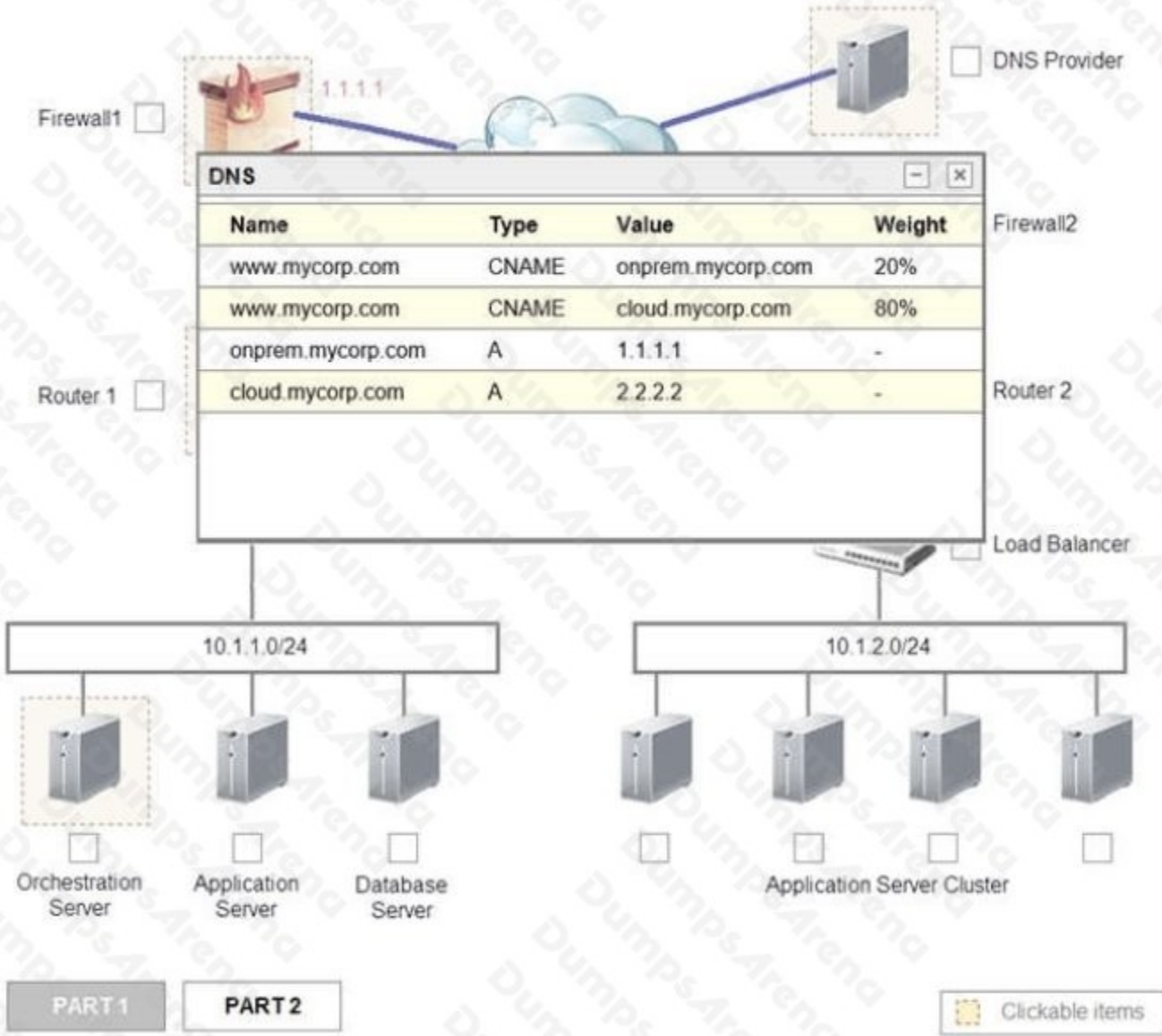
PART 1

Instruction: Click on each device to review more information of DNS, Firewall1, Firewall2, Router1, Router2, VPN and Orchestration Server.



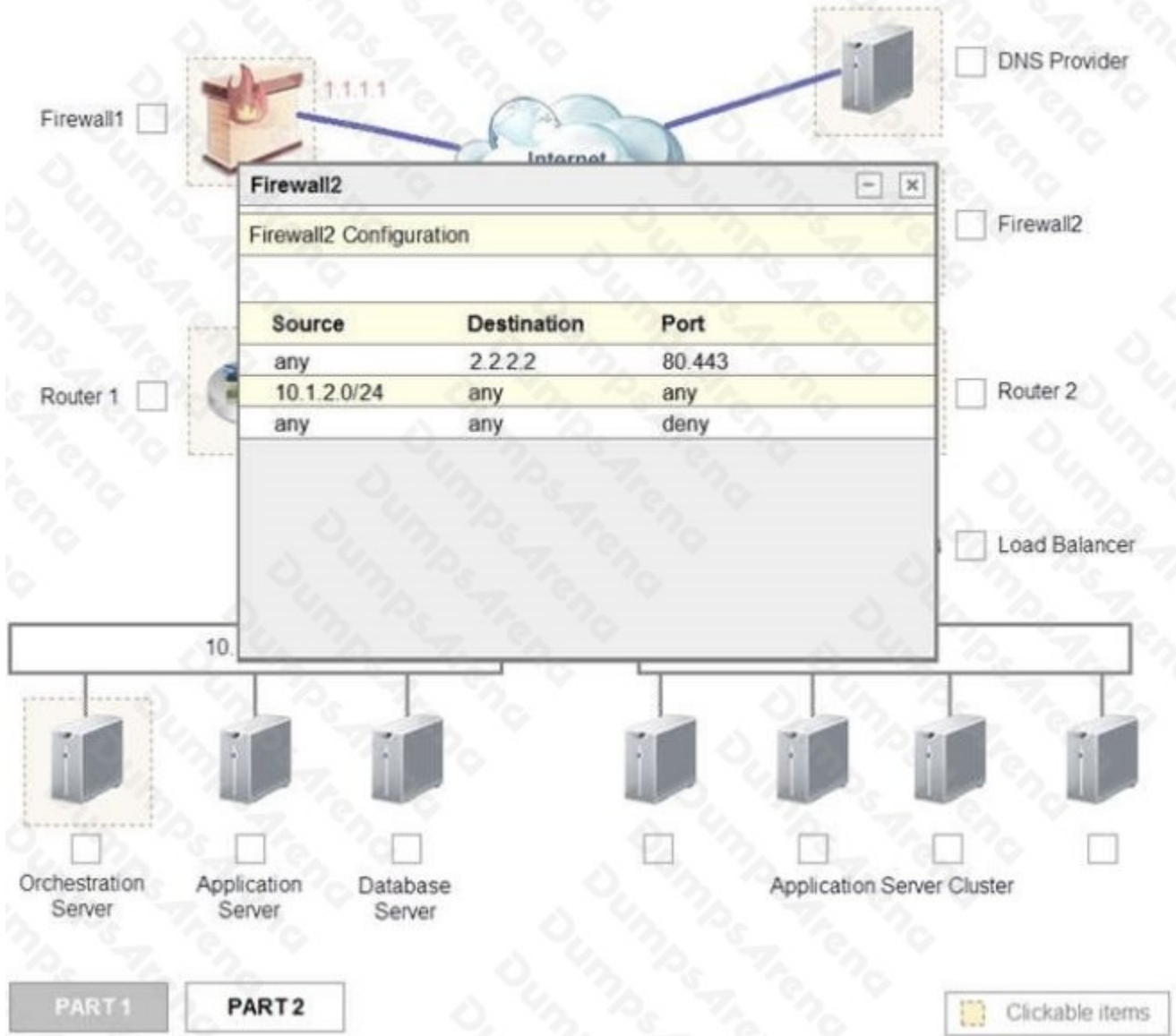
PART 1

Instruction: Click on each device to review more information of DNS, Firewall1, Firewall2, Router1, Router2, VPN and Orchestration Server.



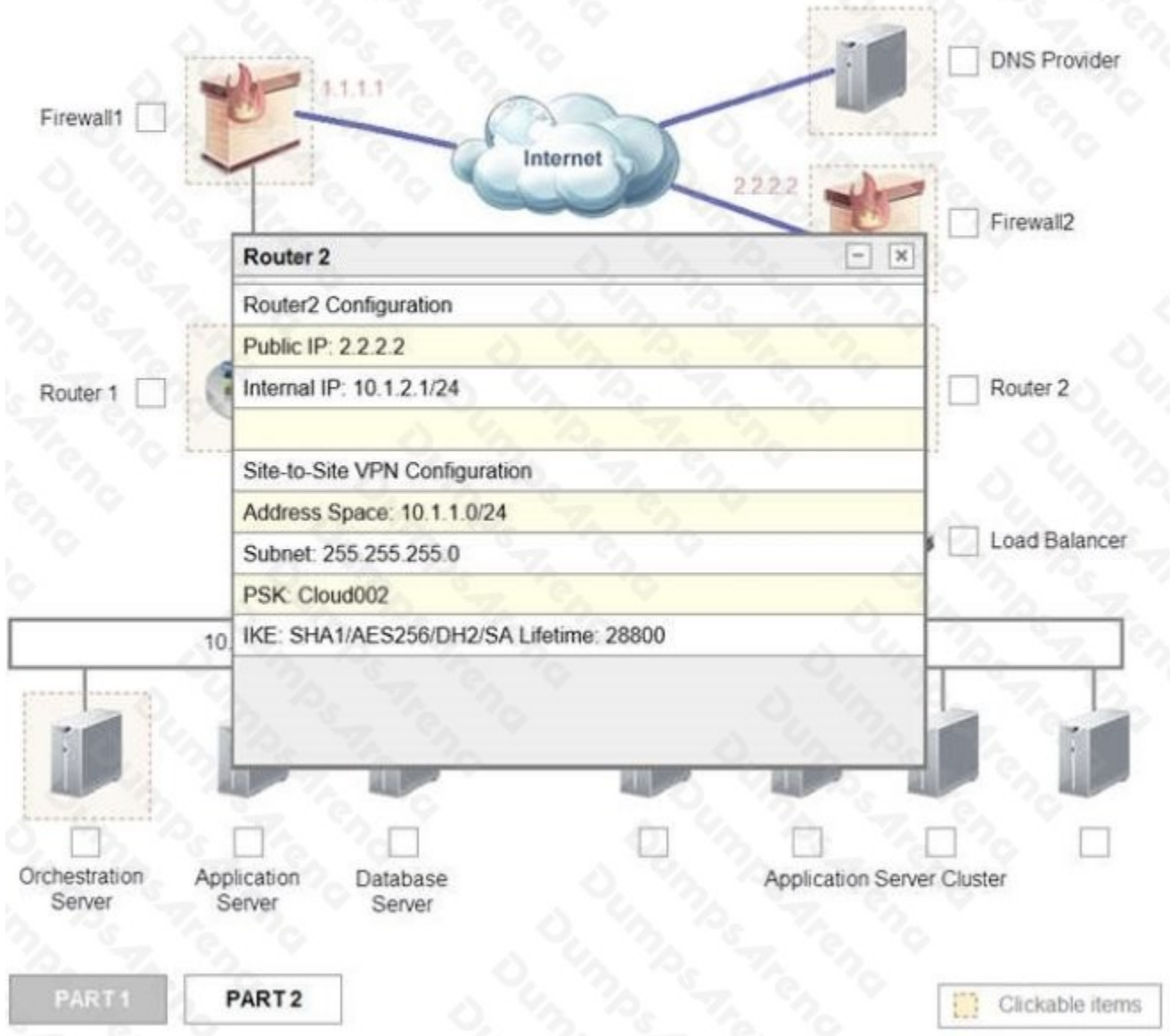
PART 1

Instruction: Click on each device to review more information of DNS, Firewall1, Firewall2, Router1, Router2, VPN and Orchestration Server.



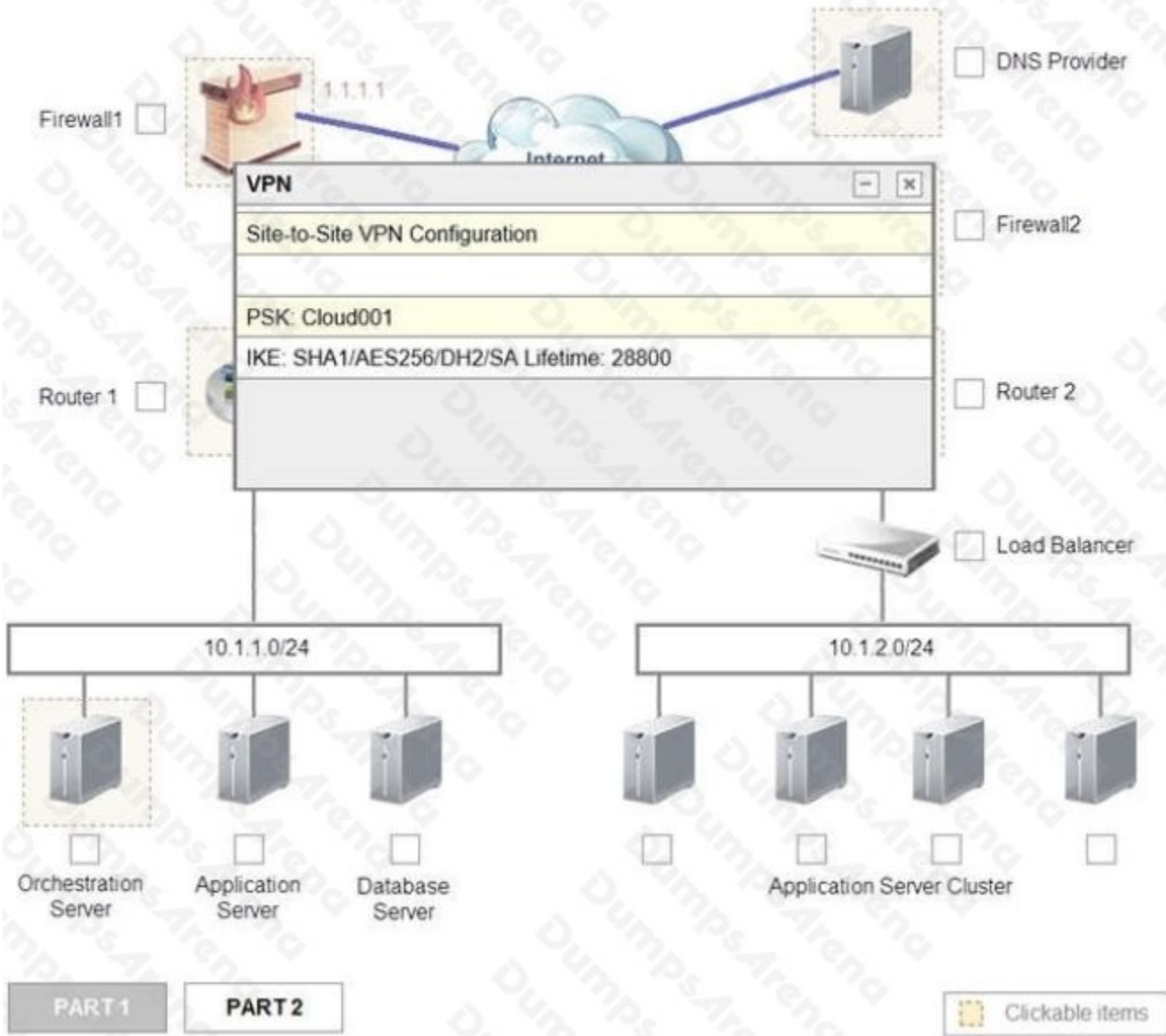
PART 1

Instruction: Click on each device to review more information of DNS, Firewall1, Firewall2, Router1, Router2, VPN and Orchestration Server.



PART 1

Instruction: Click on each device to review more information of DNS, Firewall1, Firewall2, Router1, Router2, VPN and Orchestration Server.



PART 1

Instruction: Click on each device to review more information of DNS, Firewall1, Firewall2, Router1, Router2, VPN and Orchestration Server.

The diagram shows a network topology with several components: Firewall1, Router 1, Orchestration Server, Application Server, and a Cluster. A central network segment is labeled 10.1.1.0. The Orchestration Server window is open, displaying the following information:

Orchestration Server	
Name: Basic_Server	<input type="checkbox"/> DNS Provider
Network: 10.1.1.0/24	
Name: Cloud_Server	<input type="checkbox"/> Firewall2
Network: 10.1.2.0/24	
Name: Application_Server	<input type="checkbox"/> Router 2
Baseline: Basic_Server	
Type: Webserver	<input type="checkbox"/> Load Balancer
Version 1.0	
Name: Database_Server	
Baseline: Basic_Server	
Type: Database Server	
Version 1.0	
Name: Corporate_Datacenter	
Baseline: Application_Server	
Count: 1	
Name: Corporate_DataCenter	
Baseline: Database_Server	
Count: 1	
Group: Cloud_Service_Provider	
Baseline: Cloud_Server	
Count: 4	

PART 1

PART 2

Clickable items

**Cloud Hybrid Network Diagram**

Part 1

Part 2

Only select a maximum of TWO options from the multiple choice question

- Deploy a Replica of the Database Server in the Cloud Provider.
- Update the PSK (Pre-shared key) in Router 2.
- Update the A record on the DNS from 2.2.2.2 to 1.1.1.1.
- Promote deny All to allow All in Firewall 1 and Firewall 2.
- Change the Address Space on Router 2.
- Change internal IP Address of Router 1.
- Reverse the Weight property in the two CNAME records on the DNS.
- Add the Application Server at on-premises to the Load Balancer.

**ANSWER: See the solution below.**

**Explanation:**

Part 1:

Router 2 is the problem and this should be selected. If you examine the preshared key used for the VPN you will see that it is not configured with the correct key. It is using Cloud002 while router1 is using Cloud001

Part 2:

Update the PSK (Pre-shared key in Router2)

Add the Application Server at on-premises to the Load Balancer

**QUESTION NO: 7**

To protect users on mobile devices from potential account compromise when accessing their corporate email, which of the following should be implemented? (Choose two.)

- A. Single sign-on
- B. Steganography
- C. Information rights management
- D. Device lock with PIN
- E. Data masking
- F. Device tracking

**G. Two-factor authentication****ANSWER: D G****Explanation:**Reference: <https://blog.avast.com/10-tips-protect-from-email-hack>**QUESTION NO: 8**

A company security policy mandates education and training for new employees. The policy must outline acceptable use policies for SaaS applications. Given these requirements, which of the following security controls is BEST suited?

- A. Preventive
- B. Detective
- C. Corrective
- D. Physical

**ANSWER: C****QUESTION NO: 9**

A cloud administrator reports a problem with the maximum number of users reached in one of the pools. There are ten VMs in the pool, each with a software capacity to handle ten users. Based on the dashboard metrics, 15% of the incoming new service requests are failing. Which of the following is the BEST approach to resolve the issue?

- A. Check compute, storage, and networking utilization in the dashboard and increase capacity by adding more resources.
- B. Check current licensed capacity and purchase additional licenses to add more users.
- C. Check the DHCP scope and increase the number of available IP addresses by extending the pool.
- D. Check the rate-of-load increase to determine if the cloud capacity boundary has been exceeded and enable bursting to the public cloud.

**ANSWER: A****QUESTION NO: 10**

A new application with availability SLA requirements of 99.99% has been deployed in a cloud. For a test spanning a month, which of the following unavailability times would mean the test was successful? (Select two).

- A. 1 minute

- B. 4 minutes
- C. 10 minutes
- D. 30 minutes
- E. 60 minutes

**ANSWER: A B**

**QUESTION NO: 11**

A customer has indicated that bi-weekly full backups are taking too long to complete.

Which of the following would be the BEST action if minimizing restore time is very important to the customer?

- A. Change the backups to synthetic full backups.
- B. Change the second full backup in a week to incremental.
- C. Change the second full backup in a week to differential.
- D. Change the schedule of full backups to start earlier.

**ANSWER: B**

**QUESTION NO: 12**

An administrator is performing a migration of a physical cluster that uses boot from SAN into private cloud. The systems administrator needs to minimize the downtime required.

Which of the following migrations is the BEST option for the systems administrator to use?

- A. P2V with cold system cloning on the storage infrastructure.
- B. P2V with storage migration on the hypervisor.
- C. P2V with copy of the LUNs into data stores for hypervisor access.
- D. P2V with raw device mapping/pass-through LUNs on the storage system.

**ANSWER: C**

**QUESTION NO: 13 - (DRAG DROP)**

DRAG DROP A hosted file share was infected with CryptoLocker and now root cause analysis needs to be performed. Place the tasks in the correct order according to the troubleshooting methodology.

Select and Place:

1		Establish a plan of action to resolve the problem and implement remediation
2		Establish a theory of probable cause
3		Document findings and outcomes
4		Identify the problem
5		Test the theory to determine cause
6		Verify full system functionality

**ANSWER:**

1	Identify the problem	
2	Establish a theory of probable cause	
3	Test the theory to determine cause	
4	Establish a plan of action to resolve the problem and implement remediation	
5	Verify full system functionality	
6	Document findings and outcomes	

Explanation:

**QUESTION NO: 14**

A cloud administrator is integrating account logins with Facebook, LinkedIn, and Twitter for marketing and to increase market presence using social media platforms. Given this scenario, which of the following components are needed to match these requirements? (Select two).

- A. SOAP
- B. SAML assertion
- C. Security token
- D. Identity provider
- E. Session state

**ANSWER: B E****QUESTION NO: 15**

A private cloud administrator realizes a specific VM has grown, and there is a low amount of free space on the disk/datastore. The disk/datastore sizes are standardized, so the cloud administrator cannot expand it.

Which of the following is the BEST way to resolve this issue?

- A. Perform compression on the VM volume.
- B. Request the VM owner to delete unnecessary files.
- C. Utilize storage live migration to another datastore/disk.
- D. Use V2P migration to reduce the load on the private cloud.

**ANSWER: C**