

# DUMPS ARENA

## CompTIA A+ Certification Exam: Core 2

CompTIA 220-1002

Version Demo

Total Demo Questions: 20

Total Premium Questions: 576

Buy Premium PDF

<https://dumpsarena.co>

[sales@dumpsarena.co](mailto:sales@dumpsarena.co)

[sales@dumpsarena.co](mailto:sales@dumpsarena.co)  
[dumpsarena.co](https://dumpsarena.co)

**QUESTION NO: 1**

Joe, a technician, recently installed drivers for a webcam, but he is now experiencing issues when trying to operate it. Which of the following should Joe check NEXT to troubleshoot the issue?

- A. Services
- B. Device Manager
- C. Event Viewer
- D. Programs and Features

**ANSWER: B****QUESTION NO: 2**

A technician has been asked to review the configuration of an executive's SOHO network following a recent news report regarding home Internet routers that are being added to botnets for malicious purposes. Which of the following would be BEST to prevent the router from being added to a botnet? (Choose two.)

- A. Upgrading to an enterprise-grade router
- B. Enabling WPA2-Enterprise encryption
- C. Changing the default credentials
- D. Updating to the latest firmware
- E. Reducing the transmit power levels
- F. Disabling the SSID from being broadcast

**ANSWER: C D****QUESTION NO: 3 - (SIMULATION)****SIMULATION**

A technician has installed two new drives in one of the computers in the computer lab. Disk1 will be utilized for user and application data. Disk 2 has already been properly configured and has production data on in. The technician has been unable to format the appropriate disk from the command prompt.

The lab requires that Disk1 be a dynamic disk configured with two partitions. The first partition must be 256,000 MB in size and mapped to drive

F. The second partition must be 512,000 MB in size and mapped to drive

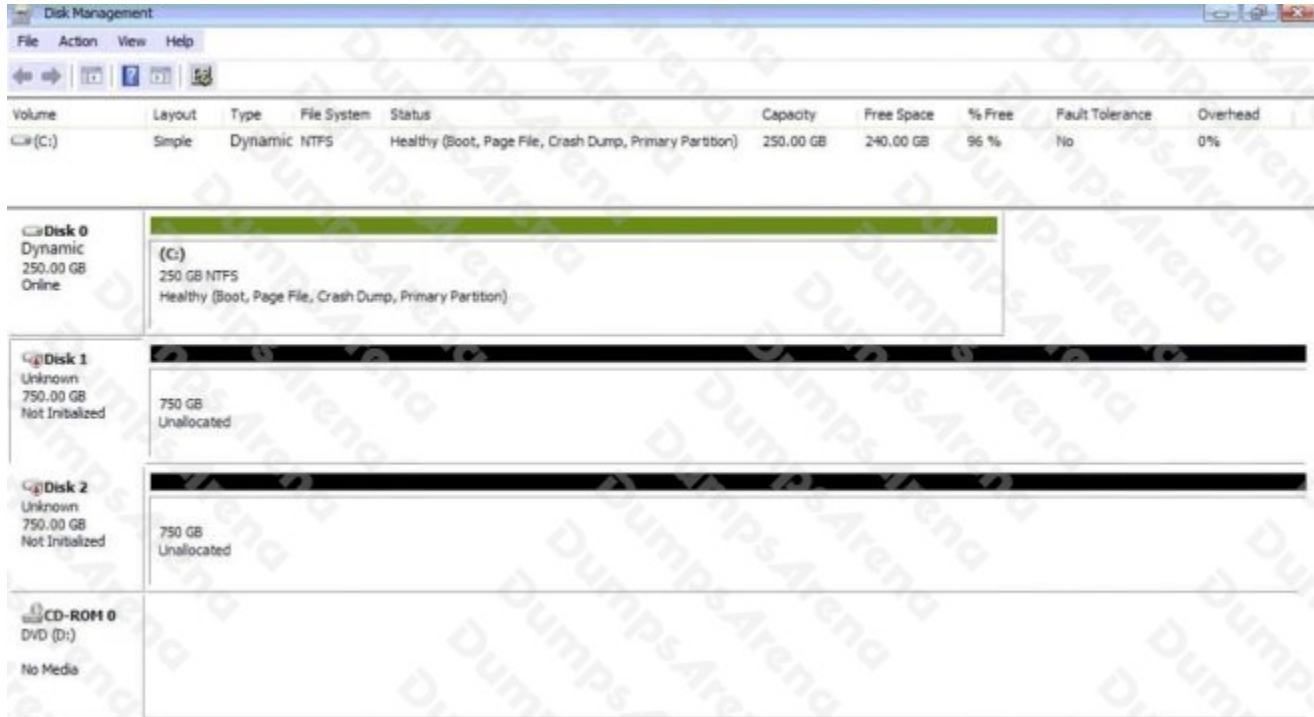
G.

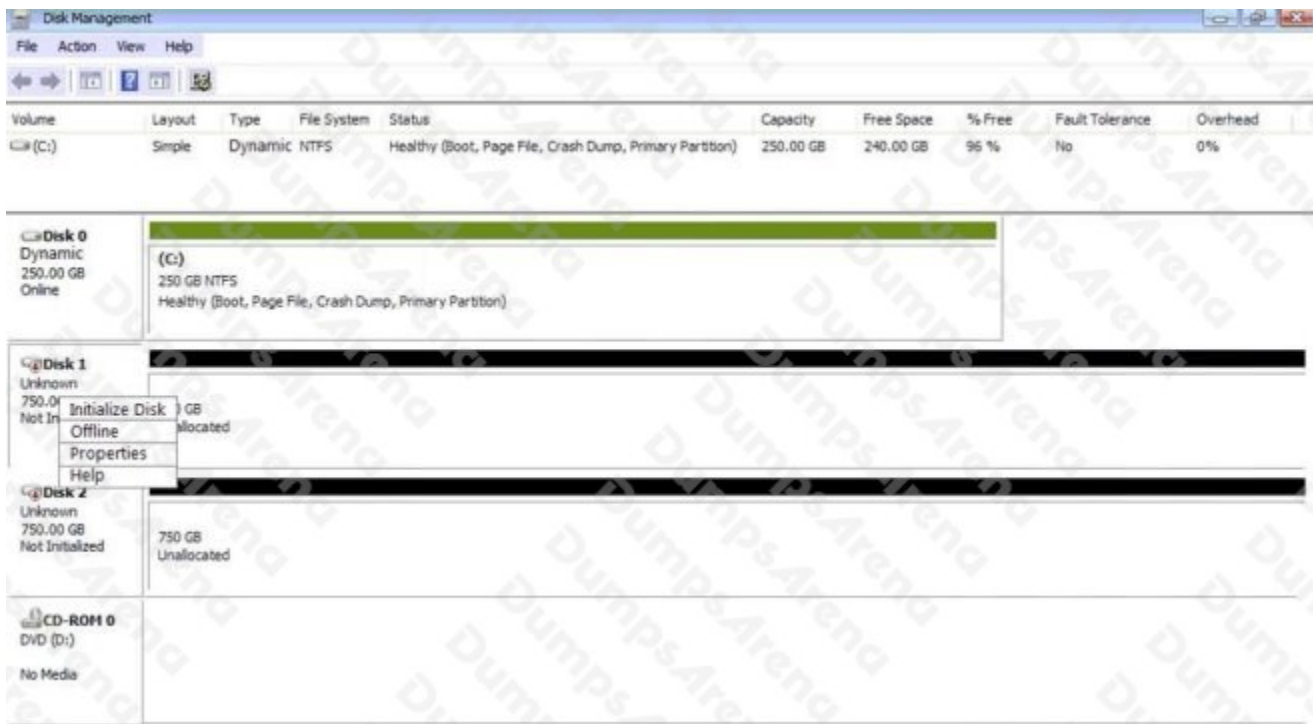
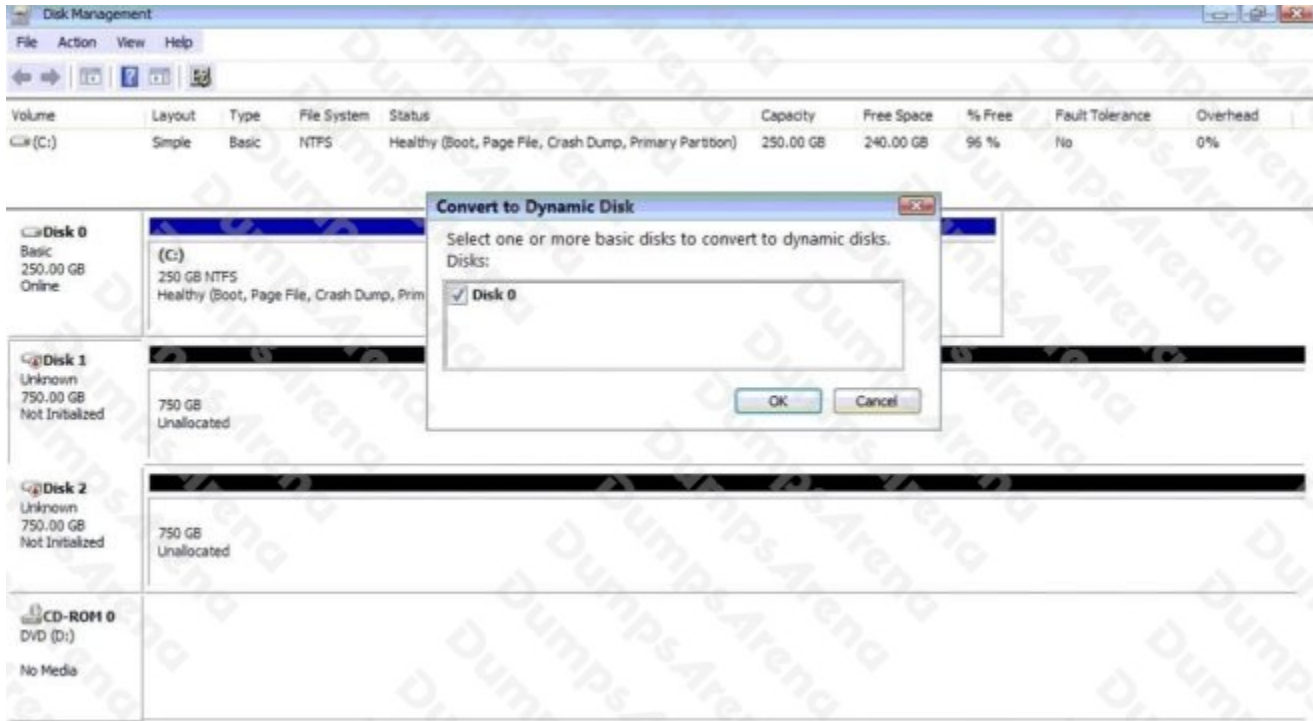
The new partitions must be formatted to ensure that user's files can be secured from other users and that the disk must be configured to account for future redundancy. Make sure to maintain a consistent file system.

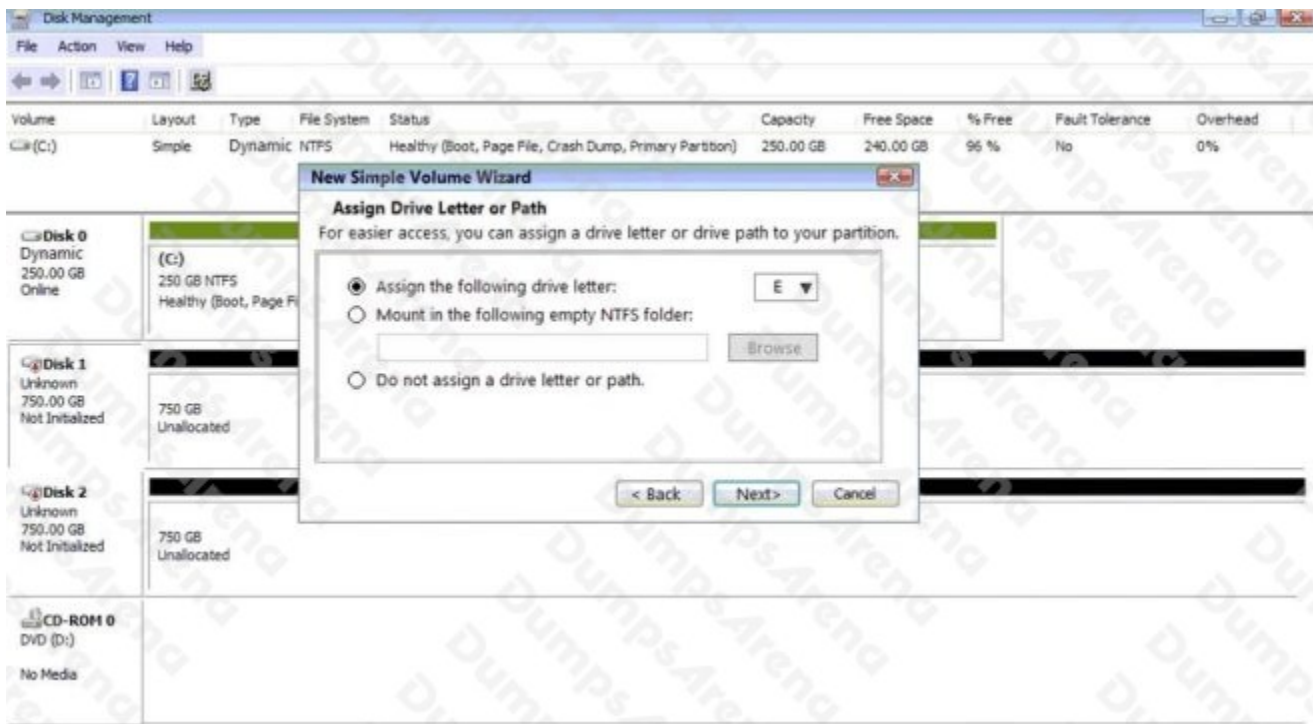
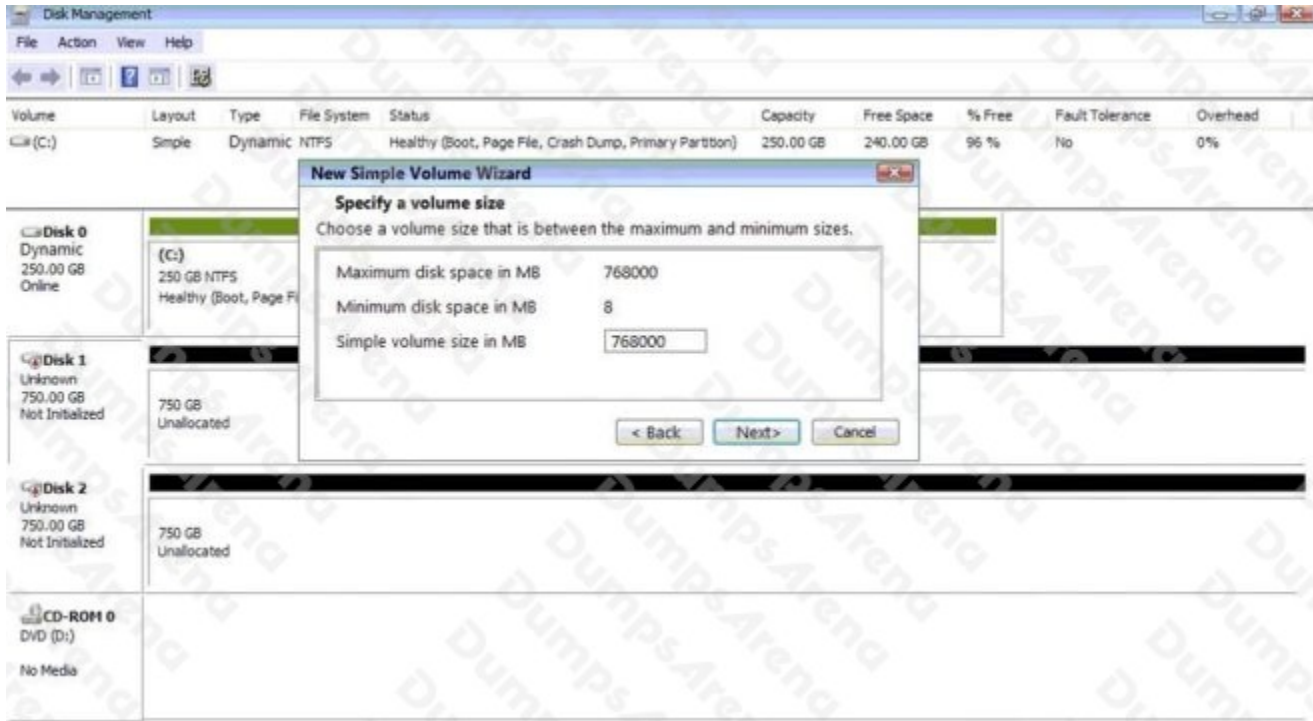
### INSTRUCTIONS:

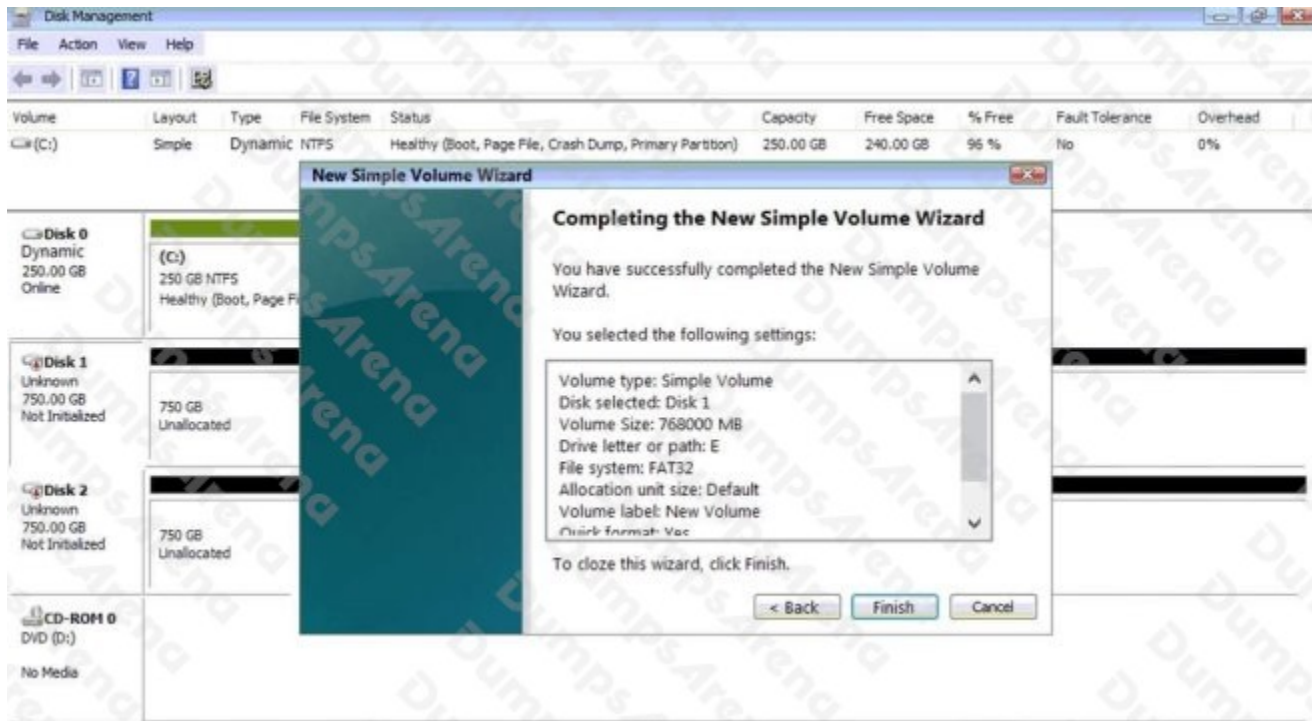
Conduct the necessary steps within the Disk Manager to accomplish these tasks.

If at any time you would like to bring back the initial state of the simulation, please click the Reset All button.









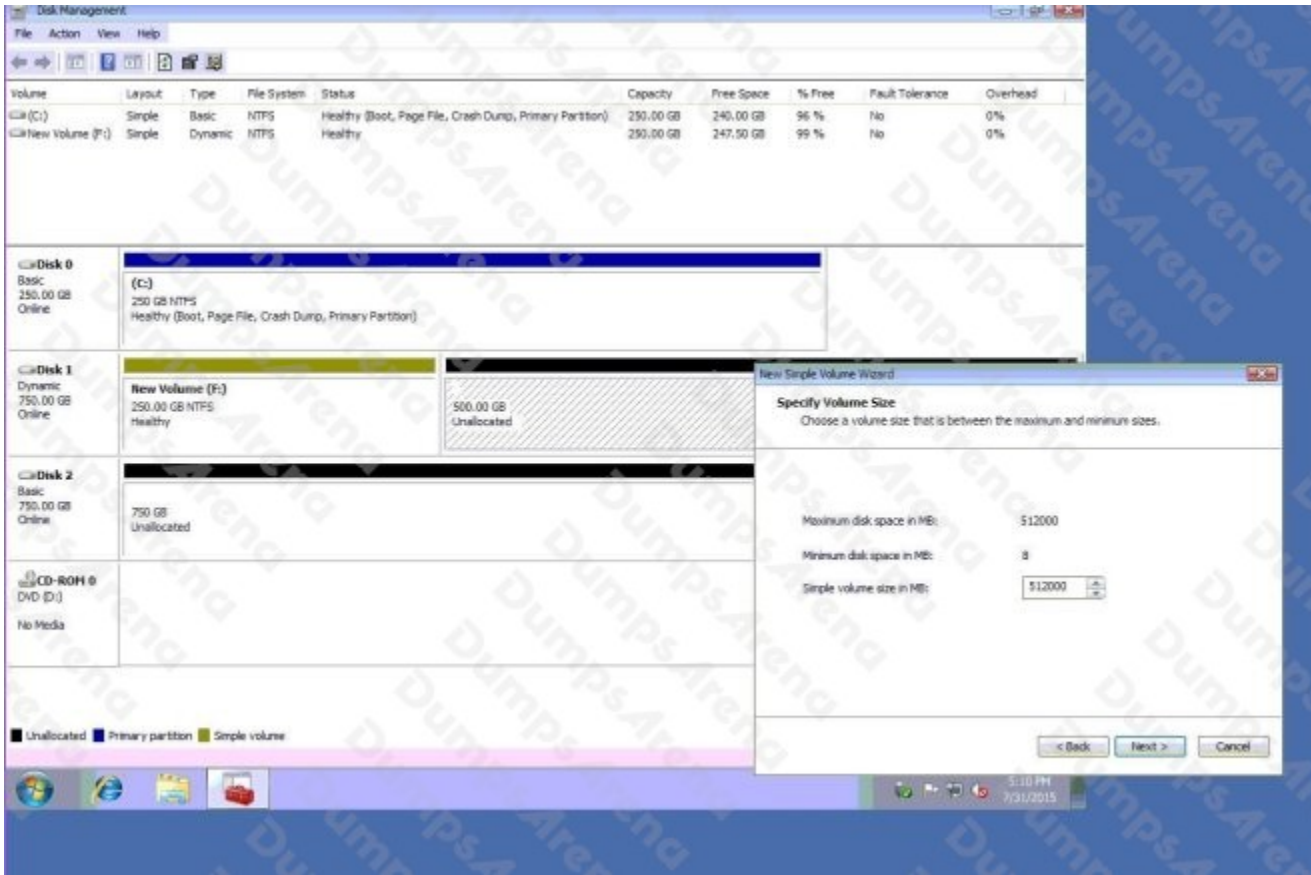
**ANSWER: Please review explanation for detailed answer.**

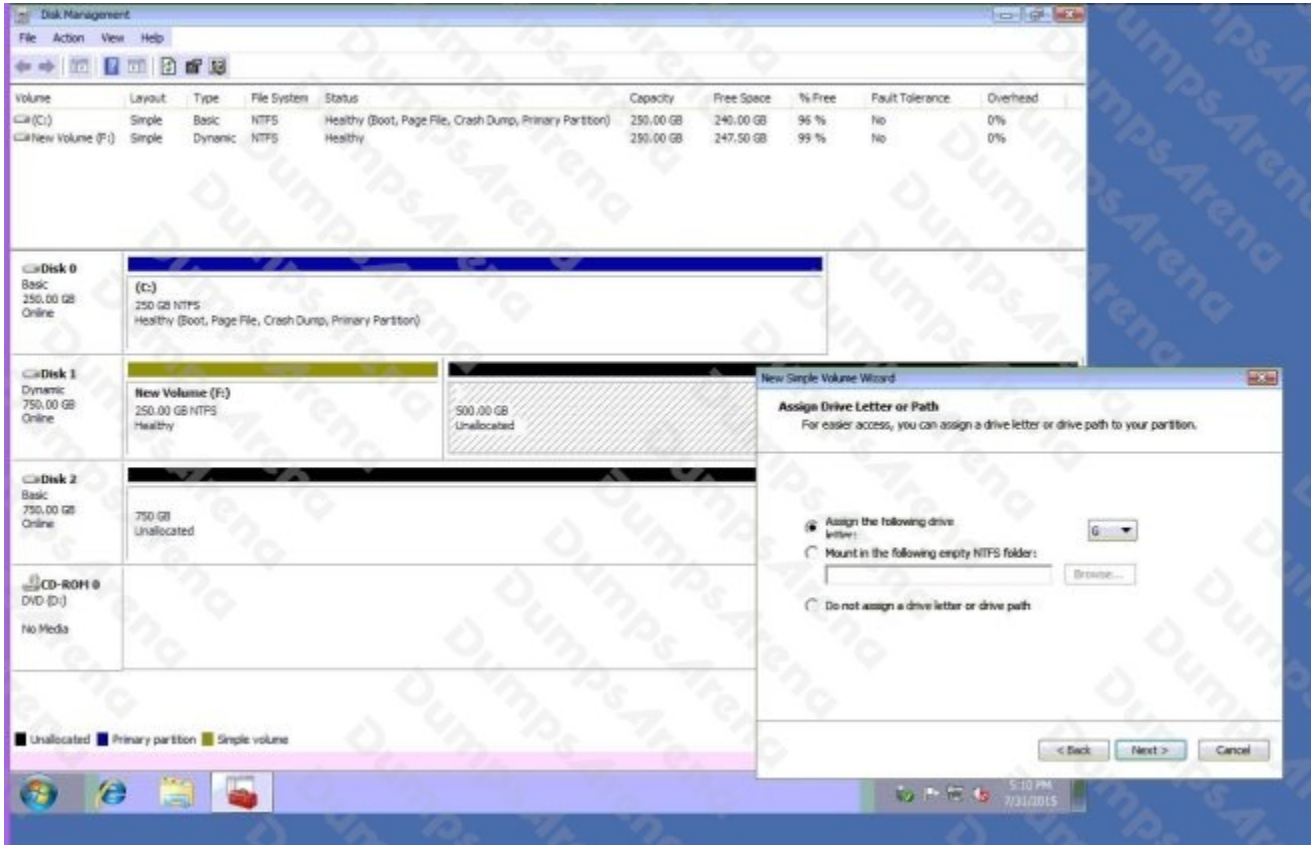
#### Explanation:

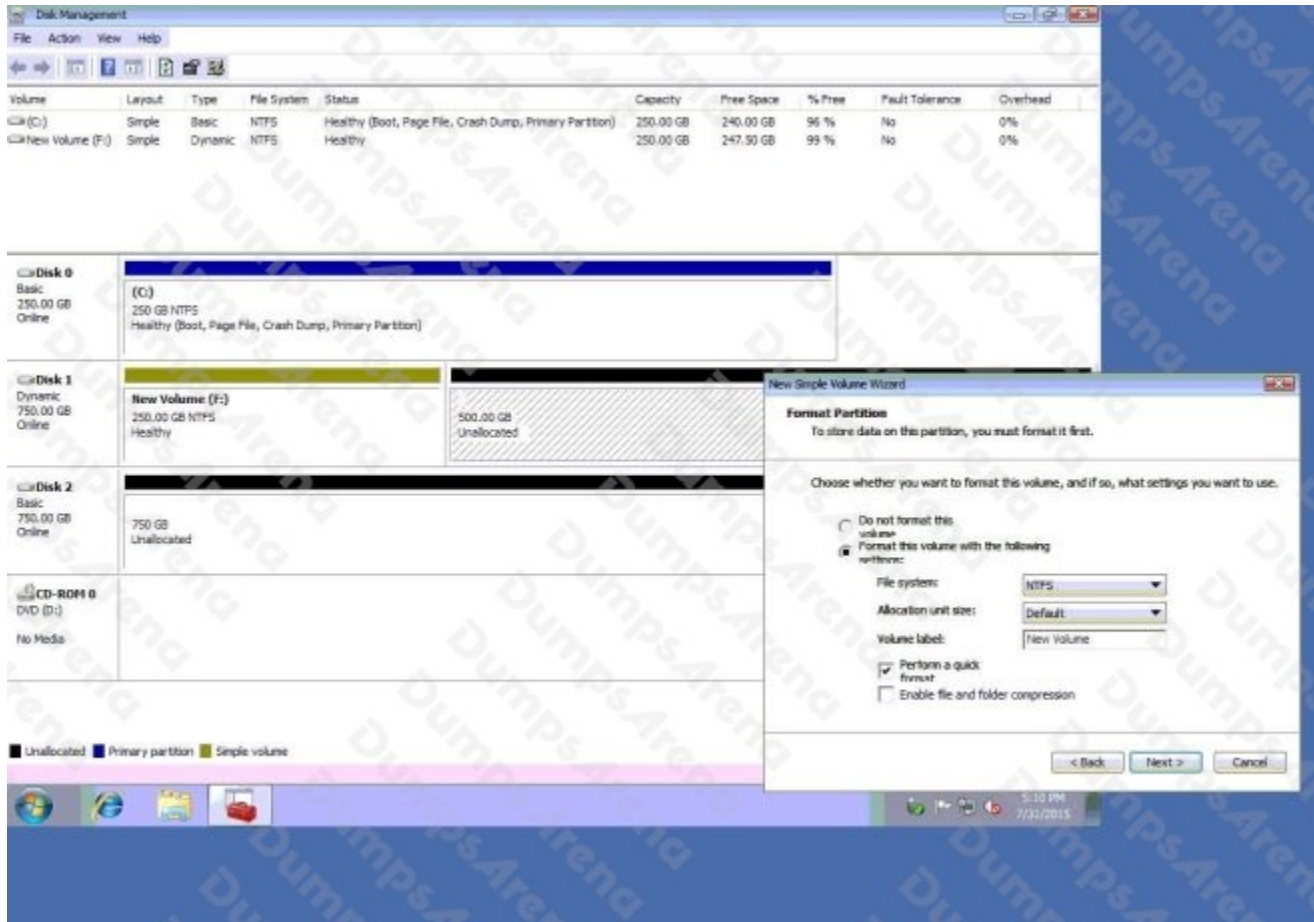
Please review explanation for detailed answer.

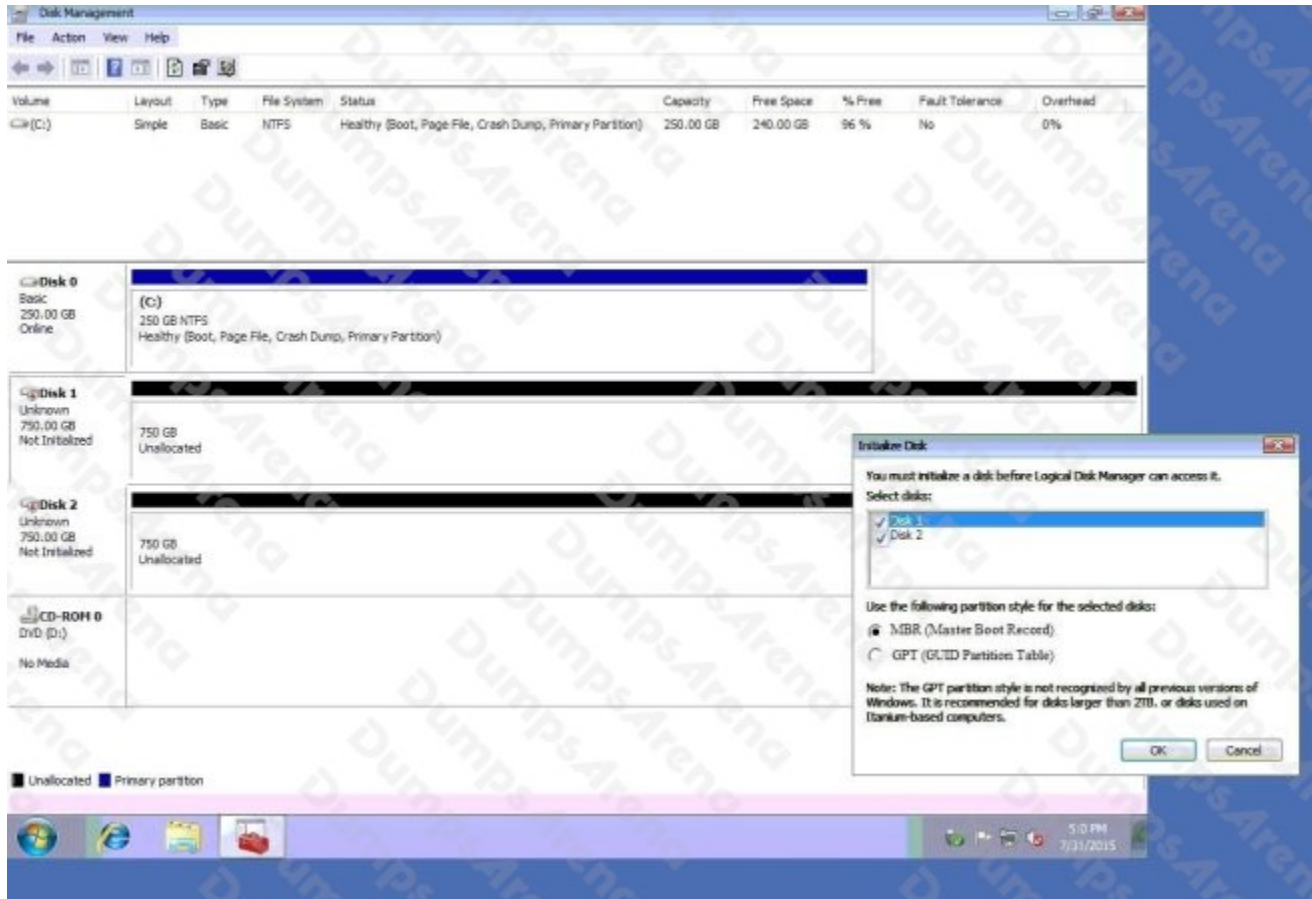
- Right click on disk 1, click on initialize
- Choose disk and option as MBR. Hit ok.
- Again, right click on disk 1 and choose convert to dynamic disk.
- Now right click on disk 1 and choose new simple volume.
- Specify storage as 256000 and assign a drive letter F and choose file system as NTFS and click finish. ▪ Do the same thing for rest of space of disk 1, assigning 512000MB and using Disc G

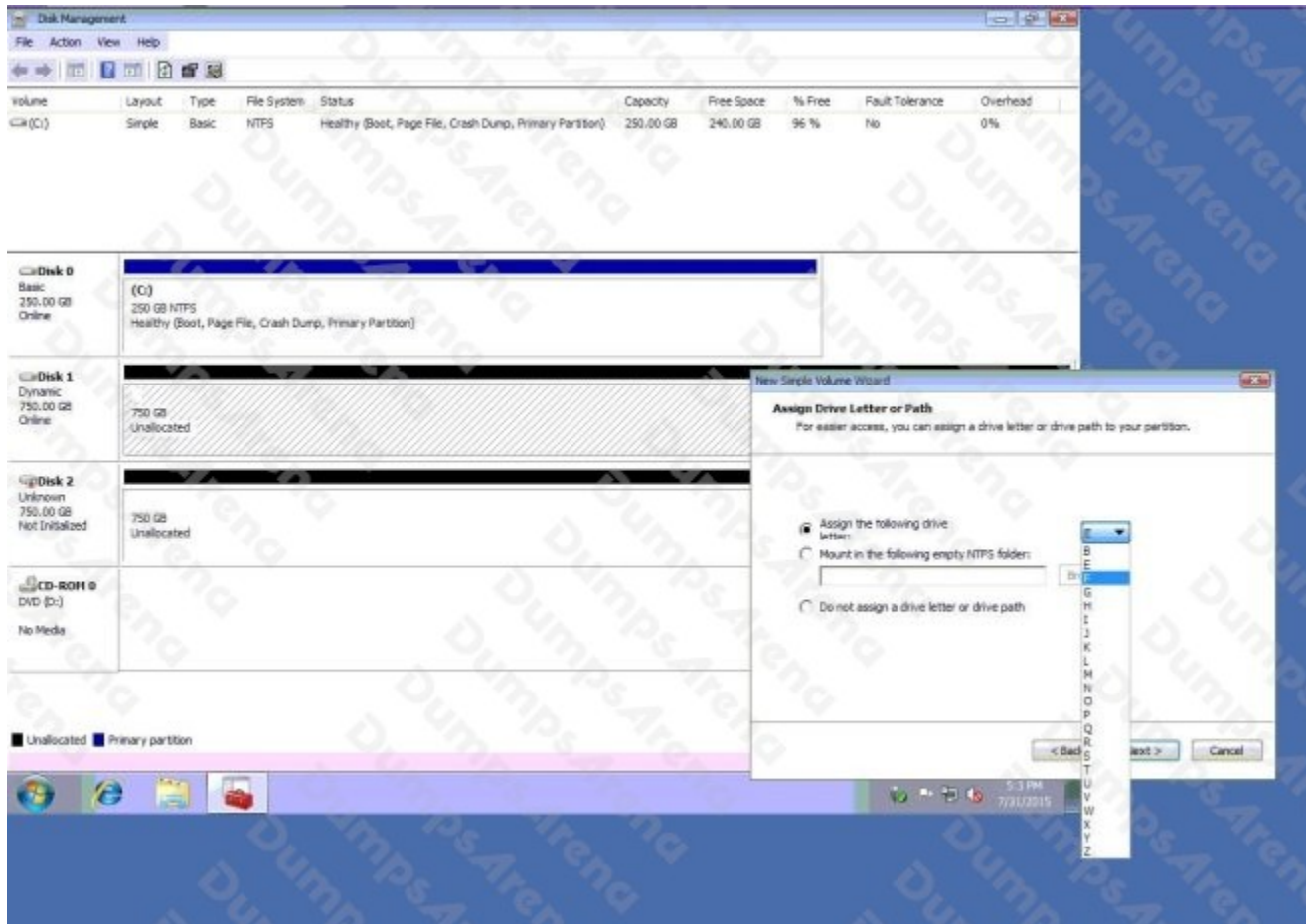
Here are the screen shots showing this process:

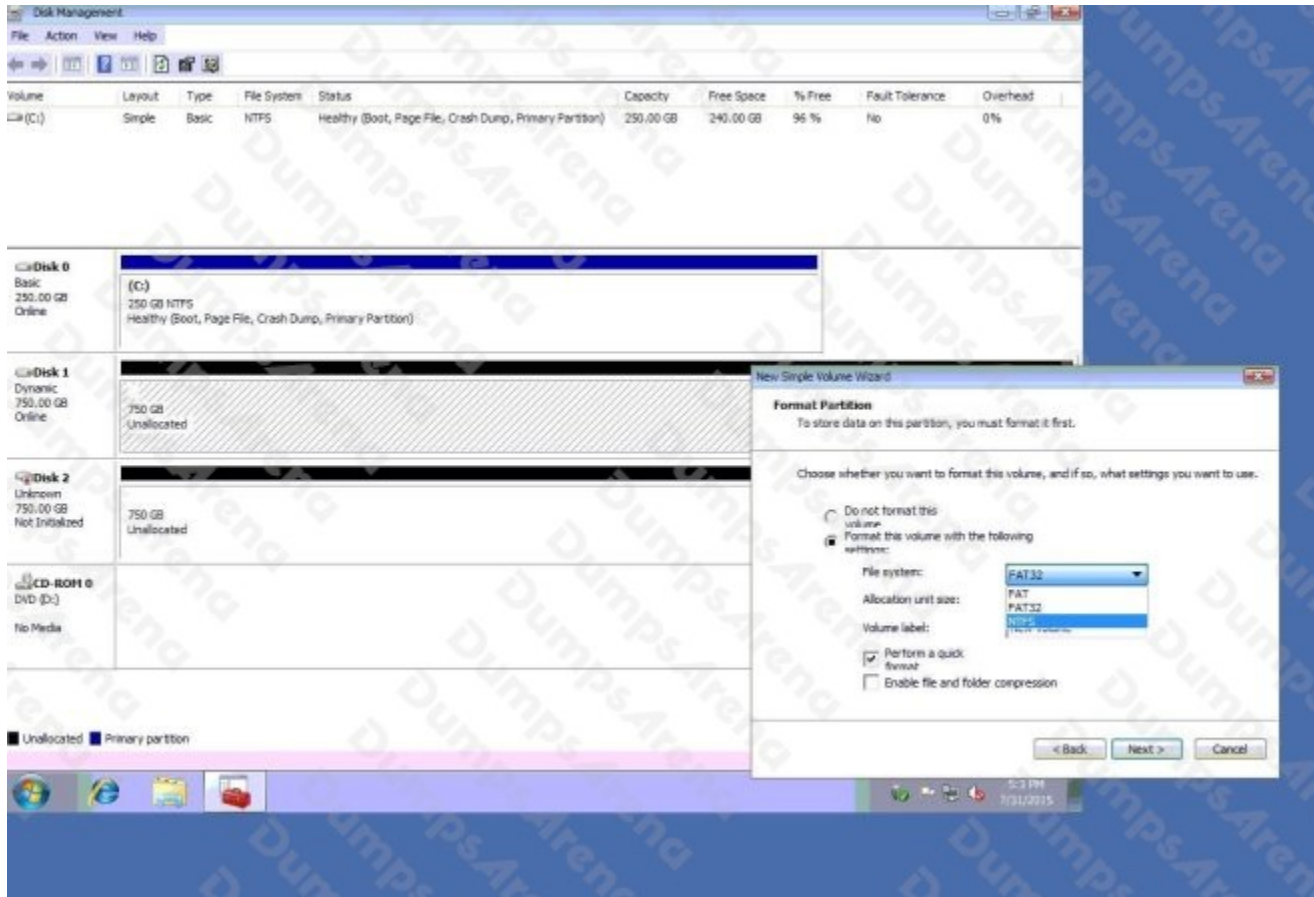












**Volume Information Table:**

| Volume          | Layout | Type    | File System | Status   | Capacity  | Free Space | % Free | Fault Tolerance | Overhead |
|-----------------|--------|---------|-------------|--|-----------|------------|--------|-----------------|----------|
| (C:)            | Simple | Basic   | NTFS        | Healthy (Boot, Page File, Crash Dump, Primary Partition) | 250.00 GB | 240.00 GB  | 96 %   | No              | 0%       |
| New Volume (F:) | Simple | Dynamic | NTFS        | Healthy  | 250.00 GB | 247.50 GB  | 99 %   | No              | 0%       |

**Disk Management Summary:**

- Disk 0:** Basic, 250.00 GB, Online. Contains (C:) 250 GB NTFS partition.
- Disk 1:** Dynamic, 750.00 GB, Online. Contains New Volume (F:) 250.00 GB NTFS partition.
- Disk 2:** Basic, 750.00 GB, Online. 750 GB Unallocated.
- CD-ROM 0:** DVD (D:), No Media.

**New Simple Volume Wizard - Specify Volume Size:**

Choose a volume size that is between the maximum and minimum sizes.

Maximum disk space in MB: 768000  
Minimum disk space in MB: 8  
Simple volume size in MB: 256000

Buttons: < Back, Next >, Cancel

The screenshot shows the Windows Disk Management console. At the top, a table lists the volumes on the system:

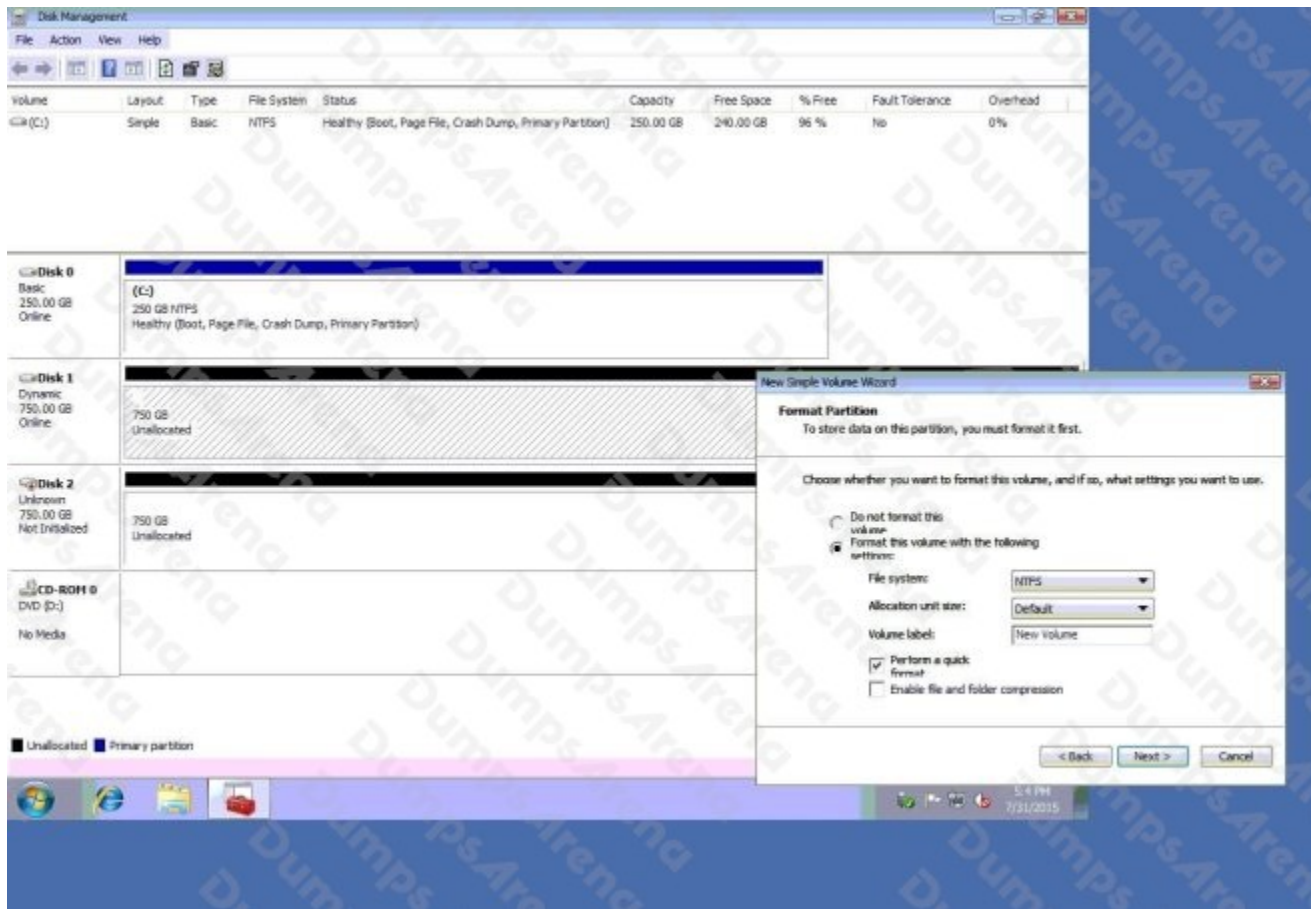
| Volume          | Layout | Type    | File System | Status   | Capacity  | Free Space | % Free | Fault Tolerance | Overhead |
|-----------------|--------|---------|-------------|--|-----------|------------|--------|-----------------|----------|
| (C:)            | Simple | Basic   | NTFS        | Healthy (Boot, Page File, Crash Dump, Primary Partition) | 250.00 GB | 240.00 GB  | 96 %   | No              | 0%       |
| New Volume (F:) | Simple | Dynamic | NTFS        | Healthy  | 250.00 GB | 247.50 GB  | 99 %   | No              | 0%       |
| New Volume (G:) | Simple | Dynamic | NTFS        | Healthy  | 500.00 GB | 495.00 GB  | 99 %   | No              | 0%       |

Below the table, the details for each disk are shown:

- Disk 0:** Basic, 250.00 GB, Online. Contains a primary partition (C:) of 250 GB NTFS, which is healthy and serves as the boot, page file, crash dump, and primary partition.
- Disk 1:** Dynamic, 750.00 GB, Online. Contains two simple volumes: New Volume (F:) of 250.00 GB NTFS (Healthy) and New Volume (G:) of 500.00 GB NTFS (Healthy).
- Disk 2:** Basic, 750.00 GB, Online. Contains 750 GB of unallocated space.
- CD-ROM 0:** DVD (D:), No Media.

A legend at the bottom indicates: Unallocated (black), Primary partition (blue), Simple volume (yellow).

The taskbar at the bottom shows the system clock as 5:13 PM on 7/31/2015.

**QUESTION NO: 4**

A technician is acquiring hardware devices and setting up a computer lab with virtual desktops. The lab computers must have the ability to connect automatically to the remote session upon boot and must be started remotely. Which of the following solutions must the hardware be able to support? (Choose two.)

- A. Image deployment
- B. Multiboot
- C. PXE
- D. Unattended installation
- E. USB
- F. Wake-on-LAN

**ANSWER: C F**

**QUESTION NO: 5**

A technician needs to recommend a disaster recovery solution for a company that has three offices across two states. The technician must ensure the solution has:

- The ability to centralize data backups
- High availability
- The ability to synchronize user data to local machines

Which of the following solutions will the technician MOST likely recommend? (Choose two.)

- A.** Cold storage of all corporate data
- B.** Redundant network links
- C.** Hot site
- D.** Servers at each location
- E.** Clustered backups
- F.** Cloud replication
- G.** Local backups

**ANSWER: B F****QUESTION NO: 6**

A technician was alerted by IT security of a potentially infected desktop, which is at a remote location. The technician will arrive on site after one hour.

Which of the following steps should be performed prior to traveling to prevent further infection? (Choose two.)

- A.** Start system updates
- B.** Back up PC data
- C.** Run antivirus
- D.** Install the firewall
- E.** Turn off System Restore
- F.** Install a keylogger

**ANSWER: A C**

**QUESTION NO: 7**

A new service desk is having a difficult time managing the volume of requests.

Which of the following is the BEST solution for the department?

- A. Implementing a support portal
- B. Creating a ticketing system
- C. Commissioning an automated callback system
- D. Submitting tickets through email

**ANSWER: B****QUESTION NO: 8**

While installing a hard drive in a server, the administrator installs an extra physical hard disk.

Which of the following technologies will allow the administrator to extend an existing volume onto the extra disk?

- A. Dynamic partitioning
- B. Disk defragmenter
- C. RAID Level 5
- D. Swap partition

**ANSWER: A****Explanation:**

Reference: <https://cybersecurityhoy.files.wordpress.com/2021/07/3-disk-partitioning-methods-and-file-systems.pdf>

**QUESTION NO: 9**

A company is implementing a work-from-home policy. As a result, the security team needs to provide guidelines and recommendations to secure such an infrastructure and have more control over users' mobile devices. Which of the following should the security administrator recommend? (Choose two.)

- A. Change management policy
- B. EULA
- C. BYOD policy
- D. Business continuity plan

- E. MDM policy
- F. Time-based login policies

**ANSWER: C E**

#### QUESTION NO: 10

A technician connected to a network switch remotely from a workstation. During an audit, a security analyst discovered the technician transmitted the username and password in plaintext over the network. Which of the following remote access technologies did the technician use to connect?

- A. Telnet
- B. SSH
- C. SFTP
- D. RDP

**ANSWER: A**

#### Explanation:

Reference: <https://security.sdsc.edu/self-help/no-plaintext/>

#### QUESTION NO: 11

While attempting to install a new program, an end user is notified the workstation meets the memory requirements, but it does not meet the requirements for free space. Due to time constraints, the user needs a quick way to install and access the program. Which of the following is the user's BEST option given the situation?

- A. Install to a network drive
- B. Install to a USB drive
- C. Install to a DVD-RW
- D. Install to a secondary internal HDD

**ANSWER: A**

#### QUESTION NO: 12

A technician needs to connect to a server using a secure terminal application. The technician must be able to reboot the server quickly and restart all the daemons with this application. Which of the following methods will the technician MOST likely use? (Choose two.)

- A. SSH
- B. Telnet
- C. Putty
- D. HTTPS
- E. Remote Assistance
- F. RDP

**ANSWER: A F**

#### **QUESTION NO: 13**

A desktop technician is responsible for the OS migration of 300 end users. As part of the migration, the technician must save the end users' data to a temporary shared drive. The data must include any hidden files to ensure 100% of the data is retained. Which of the following commands will achieve this result by default?

- A. robocopy
- B. copy
- C. xcopy
- D. cp

**ANSWER: A**

#### **QUESTION NO: 14**

A technician has created a new fileshare for an organization. To maintain data security, all users should have read-only rights to the fileshare. Additionally, supervisors need to be able to write and delete files. After the technician has configured the fileshare, users can read documents, but supervisors cannot modify documents.

Which of the following utilities should the technician use to troubleshoot the issue?

- A. Microsoft Management Console
- B. User Account Control
- C. Local Security Policy
- D. Map Network Drive

**ANSWER: C**

**QUESTION NO: 15**

A technician is restoring files, which were deleted more than one month ago, from a backup on Mac OS X. Using the available GUI utility, which of the following utilities should the technician launch to accomplish this task?

- A. Dock
- B. Finder
- C. Keychain
- D. Boot Camp

**ANSWER: B**

**QUESTION NO: 16**

A user is staying at a hotel that only offers Fast Ethernet connectivity to the network. The user's laptop is currently using the corporate network for access to network resources as well as the cloud. Which of the following should the help desk recommend performing prior to using the hotel network?

- A. Add a country code exception to the firewall
- B. Unmap all network drives
- C. Change the proxy settings
- D. Enable Remote Assistance

**ANSWER: B**

**QUESTION NO: 17**

A user reports unwanted pop-ups are appearing on a computer's screen, and the system is performing slowly. Which of the following should a technician do FIRST to troubleshoot the threat? (Choose two.)

- A. Kill all processes that are not related to Windows.
- B. Restart the computer in safe mode.
- C. Run antivirus and anti-malware scans.
- D. Search for software related to the pop-ups.
- E. Uninstall the network driver from the Device Manager.

F. Disable all non-Microsoft services.

**ANSWER: B C**

**QUESTION NO: 18**

A technician is installing new software on an older laptop that has a current OS. The software contains a database back end that also requires installation. Which of the following should the technician review to ensure the software will run before installing it? (Choose two.)

- A. Memory usage
- B. Display settings.
- C. Network utilization
- D. Storage capacity
- E. Firewall rules
- F. Antivirus signatures

**ANSWER: A D**

**QUESTION NO: 19**

A SOHO technician recently moved some data from one server to another to increase storage capacity. Several users are now reporting they cannot access certain shares on the network. When the users attempt to access the shares, they get the following error: Access Denied. The technician confirms the users are all in the proper security groups and have the proper access, but they are still unable to access the shares.

Which of the following are the MOST likely reasons for these issues? (Choose two.)

- A. Administrative share permissions
- B. Mapped drives
- C. Group Policy hours restriction
- D. Denied write/delete permissions
- E. Disabled proxy settings

**ANSWER: A B**

**QUESTION NO: 20**

As part of a CYOD policy, a systems administrator needs to configure each user's Windows device to require a password when resuming from a period of sleep or inactivity.

Which of the following paths will lead the administrator to the correct settings?

- A. Use Settings to access Screensaver settings
- B. Use Settings to access Screen Time-out settings
- C. Use Settings to access General
- D. Use Settings to access Display

**ANSWER: A**