

DUMPS ARENA

Wireshark Certified Network Analyst Practice Exam

Wireshark WCNA

Version Demo

Total Demo Questions: 10

Total Premium Questions: 100

Buy Premium PDF

<https://dumpsarena.co>

sales@dumpsarena.co

sales@dumpsarena.co
dumpsarena.co

QUESTION NO: 1

The ip.addr != 10.2.4.1 display filter shows all packets except ones that contain the address 10.2.4.1 in the source or destination IP address fields.

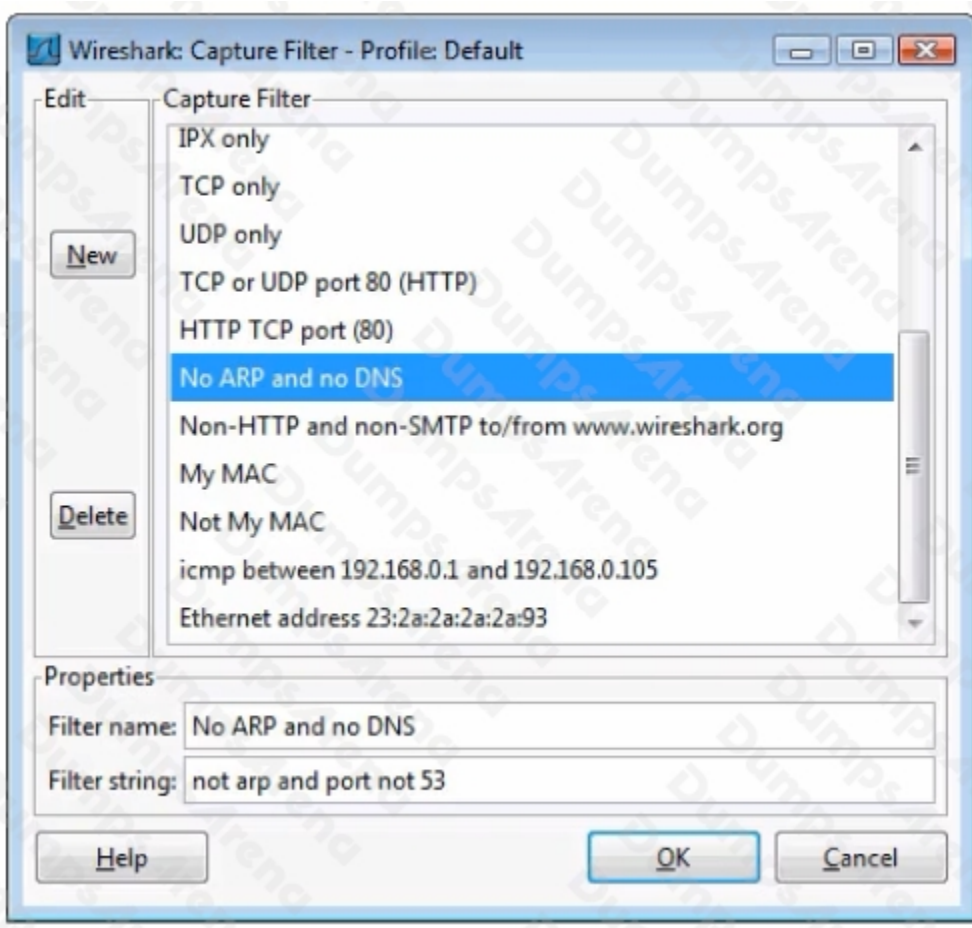
- A. True
- B. False

ANSWER: B**QUESTION NO: 2**

DNS responses contain four sections: Question, Answer RR, Authority RR and Additional RR.

- A. True
- B. False

ANSWER: A**QUESTION NO: 3**



Which statement about the highlighted capture filter is correct?

- A. This filter will generate an error.
- B. This filter will capture gratuitous ARP pack**
- C. This filter will capture DNS PTR queries using port 53.
- D. This filter will capture DNS packets that use non-standard port numbers.

ANSWER: A

QUESTION NO: 4

```
⊕ Frame 20: 78 bytes on wire (624 bits), 78 bytes captured (624 bits) on interface 0
⊕ Ethernet II, Src: NetworkG_10:22:1b (00:00:65:10:22:1b), Dst: 10.3.30.1
⊕ Internet Protocol, Src: 10.3.71.7 (10.3.71.7), Dst: 10.3.30.1
⊖ Transmission Control Protocol, Src Port: blackjack (1025), Dst Port: ftp (21)
  Source port: blackjack (1025)
  Destination port: ftp (21)
  [Stream index: 0]
  Sequence number: 43 (relative sequence number)
  [Next sequence number: 63 (relative sequence number)]
  Acknowledgement number: 568 (relative ack number)
  Header length: 20 bytes
  ⊕ Flags: 0x18 (PSH, ACK)
  Window size: 8193
  ⊕ Checksum: 0xdf46 [correct]
  ⊕ [SEQ/ACK analysis]
⊖ File Transfer Protocol (FTP)
  ⊖ PORT 10,3,71,7,4,2\r\n
    Request command: PORT
    Request arg: 10,3,71,7,4,2
    Active IP address: 10.3.71.7 (10.3.71.7)
    Active port: 1026
```

Which statement about this packet is correct?

- A. The sender will open port 1026 for an FTP data connection.
- B. This communication is generated by the "Blackjack" application.
- C. The packet is a request to the target to open port 1026 for a new TCP connection.
- D. The receive window size value indicates no additional data can be received on port 1025.

ANSWER: A

QUESTION NO: 5

```
Hypertext Transfer Protocol
POST /flashmail.asp HTTP/1.1\r\n
  [Expert Info (Chat/Sequence): POST /flashmail.asp HTTP
  Request Method: POST
  Request URI: /flashmail.asp
  Request Version: HTTP/1.1
  Accept: */*\r\n
  x-flash-version: 7,0,19,0\r\n
  Content-Type: application/x-www-form-urlencoded\r\n
  Content-Length: 986\r\n
  Accept-Encoding: gzip, deflate\r\n
  User-Agent: Mozilla/4.0 (compatible; MSIE 6.0; windows
  Host: www.discoverconsoles.com\r\n
  Connection: Keep-Alive\r\n
  Cache-Control: no-cache\r\n
  \r\n
  Line-based text data: application/x-www-form-urlencoded
```

This packet was sent from an HTTP client.

- A. True
- B. False

ANSWER: A

QUESTION NO: 6

If a DHCP client does not receive an acknowledgment before the expiration of the rebinding time, the DHCP client must release its IP address and send a DHCP broadcast to locate a DHCP server or Relay Agent.

- A. True
- B. False

ANSWER: A

QUESTION NO: 7

RTP provides transport functions for real-time data such as audio, video or simulation data over multicast or unicast network services.

- A. True
- B. False

ANSWER: A

QUESTION NO: 8

Which protocol is used to locate the hardware address of a local target or local router?

- A. ip
- B. ARP
- C. DNS
- D. DHCP

ANSWER: B

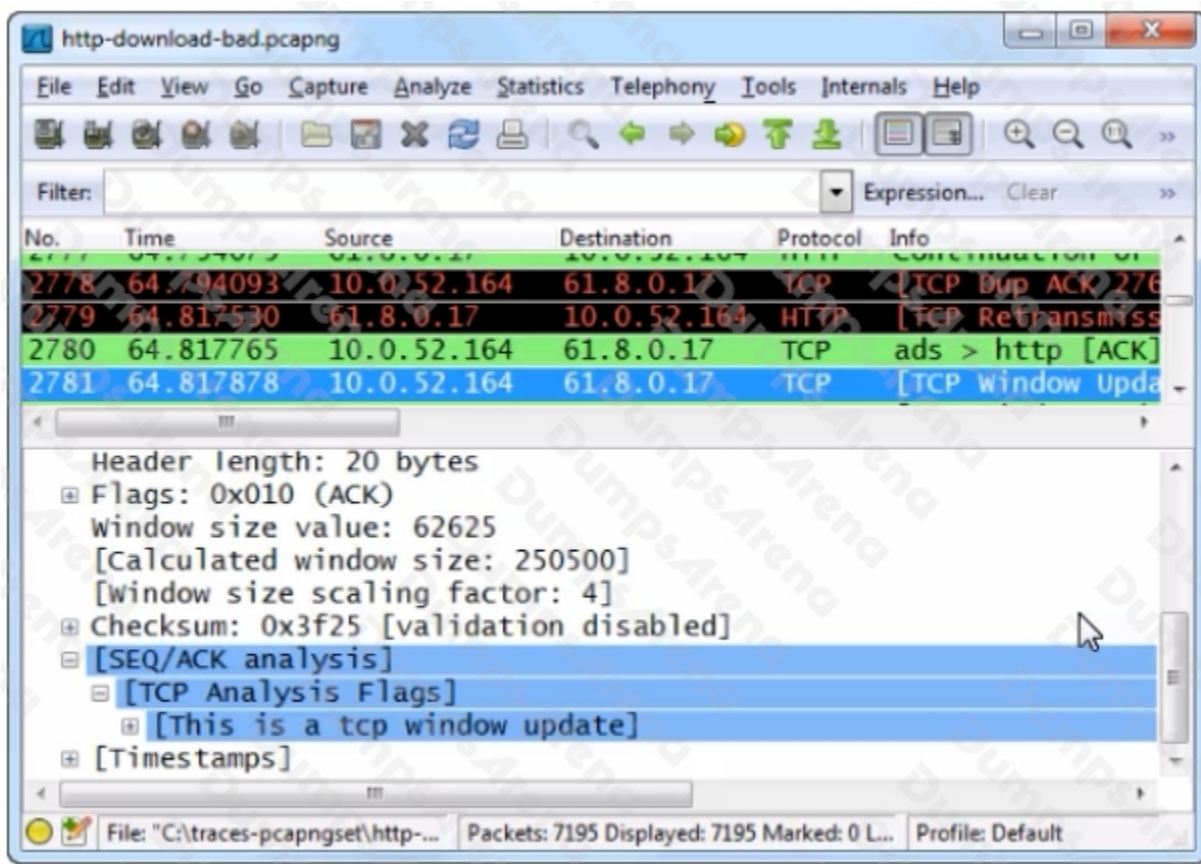
QUESTION NO: 9

Which transport is used for multicast and broadcast traffic?

- A. TCP
- B. UDP
- C. ICMP
- D. ARP

ANSWER: B

QUESTION NO: 10



This image shows frame 2781 which is a Window Update packet. This packet indicates that 10.0.52.164's TCP Window Size field value has increased since the last packet sent by that host.

- A. True
- B. False

ANSWER: A