

DUMPS ARENA

IBM Business Process Manager Advanced V8.0 Integration Development

IBM C9550-273

Version Demo

Total Demo Questions: 8

Total Premium Questions: 53

Buy Premium PDF

<https://dumpsarena.co>

sales@dumpsarena.co

sales@dumpsarena.co
dumpsarena.co

QUESTION NO: 1

An integration developer is testing a long-running process application for a customer. When the business process receives a request, it invokes several other SCA services. During integration testing, the developer finds that an unexpected failure has occurred. Which troubleshooting method gives the integration developer a detailed hierarchal view of the invocation record, including input and output data?

- A. Put breakpoints at various places in the business process.
- B. Change the log detail level to the SCA.* option in the running server.
- C. Enable cross-component trace (XCT) with the Data Snapshot option.
- D. Load all the other integrated SCA services in the business process to the same workspace.

ANSWER: C**QUESTION NO: 2**

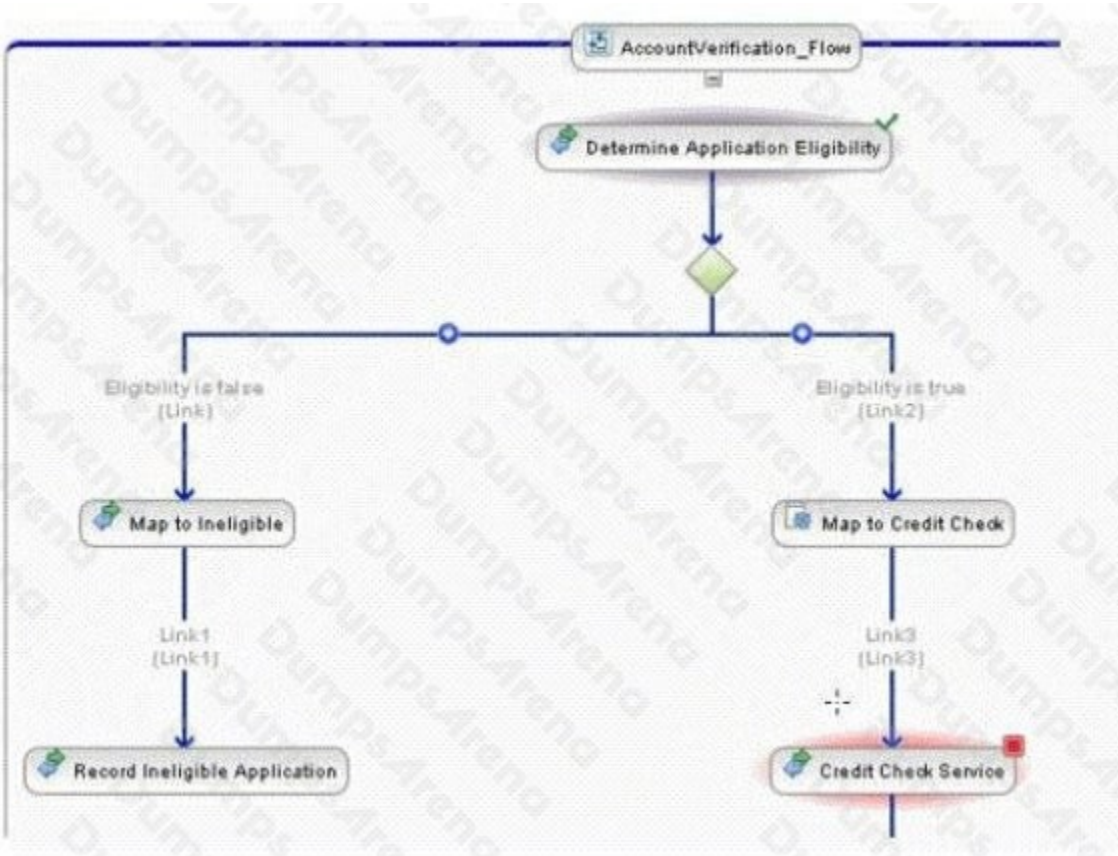
An integration developer uses the Process Center perspective to connect to a repository. The Process Center repository contains process applications and toolkits which members of the business development team designed. The integration developer has ProcAppA open in an Integration Designer workspace. In order to run the process application on the repository, the integration developer must: (choose two)

- A. call the invoke operation on the interface.
- B. create a new snapshot of the process application.
- C. create a new SCA component to wrap the AIS service.
- D. create a new import component which implements the interface.
- E. copy the artifacts which were generated in the Integration Designer to the integration solution library.

ANSWER: A D**QUESTION NO: 3**

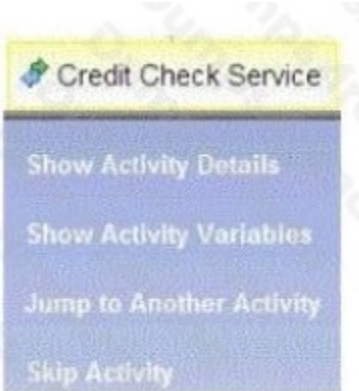
An integration developer needs to analyze a failed activity in an instance in Business Process Choreographer (BPC) Explorer. Exhibit 1 shows the process state for the failed activity.

Exhibit 1:



The process stopped at CreditCheckService because the target service is not available. Because it was not possible to determine the cause of failure at the time, the integration developer decided to forcefully complete the failed activity by manually entering the output data. The integration developer clicks the CreditCheckService activity to see the menu option shown in Exhibit 2.

Exhibit 2:



Which option should the integration developer select to resume and complete the failed activity? Jump to Another Activity to go to another activity, click the next activity as a target activity:

- A. and cancel Jump.A.and cancel Jump.
- B. and choose Skip Source Activity and Jump.B.and choose Skip Source Activity and Jump.

C. and choose Complete Source Activity and Jump. Enter the output data and click Complete and Jump to complete the activity with the data provided.

D. and choose Complete Source Activity and Jump. Enter the output data and click Complete and Jump to complete the activity with the data provided.

E. and choose Complete Source Activity and Jump. Enter the output data and click Complete and Jump to complete the activity with the data provided.

F. and choose Force Complete Source Activity and Jump. Enter the output data and click Force Complete and Jump to complete the activity with the data provided.

G. and choose Force Complete Source Activity and Jump. Enter the output data and click Force Complete and Jump to complete the activity with the data provided.

H. and choose Force Complete Source Activity and Jump. Enter the output data and click Force Complete and Jump to complete the activity with the data provided.

ANSWER: F G H

QUESTION NO: 4

An integration developer opens a process application in the IBM Integration Designer (IID) workspace. It contains a business data object CandidateData, a business process definition (BPD) CheckCandidateData and there is no integration service or toolkit dependency associated with this process application. Which artifacts related to the process application will the integration developer see in advanced mode when the process application is imported in the IID workspace? The CheckCandidateData BPD under:

A. Processes and a business object under Data, and no generated interfaces.

B. Processes, automatically generated interfaces under Interfaces, and a business object under Data.

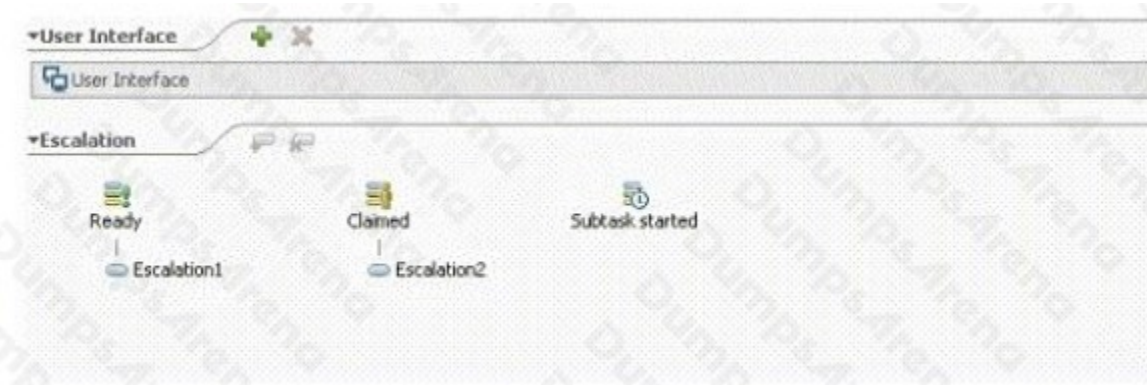
C. Processes, automatically generated interfaces under Interfaces, a business object under Data, and an unimplemented integration service under Advanced Integration Services.

D. Integration Logic, automatically generated interfaces under Interfaces, and a business object under Data.

ANSWER: B

QUESTION NO: 5

An integration developer needs to implement escalations for tasks that are not completed on time in an integration solution.



Which behavior can the integration developer expect with the above implementation? (choose 2)

- A. Escalation 2 will not be thrown if Escalation 1 executes.
- B. Escalation 2 is thrown when the task moves to claimed state.
- C. If Escalation 2 is thrown, it will occur before Escalation 1 is thrown.
- D. If Escalation 1 is thrown, it will occur before Escalation 2 is thrown.
- E. Escalation 1 is thrown when the task does not move to claimed state within the specified duration.

ANSWER: D E

QUESTION NO: 6

An integration developer must invoke a native HTTP application over a secured transport channel and use a custom data binding to convert data from ServiceDataObject to HTTP. How does the integration developer achieve this? Use a:

- A. SOAP/HTTP import
- B. HTTP export with custom data binding.
- C. HTTP import with custom data binding.
- D. HTTP import with an authentication alias and custom data binding.

ANSWER: D

QUESTION NO: 7

An integration developer needs to implement a human task in an integration solution. If reusability is a priority, then the integration developer should develop:

- A. a collaboration task, since it can be a parent task.
- B. an administration task, since it is a reusable activity.

- C. a to-do task, since it has access to the process context.
- D. an invocation task, since it can be attached to a process.

ANSWER: A

QUESTION NO: 8

A microflow calls a long-running process using a two-way request/response synchronous operation. What can be a consequence of using this pattern?

- A. It will be easier to implement Exception Handling in the microflow.
- B. When the long-running process completes, the microflow transaction will be committed.
- C. The transaction and threads used by the microflow will be tied up until the long-running process finishes.
- D. Compensation logic will need to be implemented in the long-running process to ensure the delivery of the reply to the microflow.

ANSWER: C