

# DUMPS ARENA

## Wlan-Cewa (Huawei Certified Network Professional - CEWA)

Huawei H12-321

Version Demo

Total Demo Questions: 20

Total Premium Questions: 535

Buy Premium PDF

<https://dumpsarena.co>

[sales@dumpsarena.co](mailto:sales@dumpsarena.co)

[sales@dumpsarena.co](mailto:sales@dumpsarena.co)  
[dumpsarena.co](https://dumpsarena.co)

**QUESTION NO: 1**

On the maintenance of the link status of the active and standby channels, you can prevent the TCP from being interrupted for a long time, but the protocol stack does not detect the connection interruption. You can prevent this by sending the primary and backup service packets and retransmission.

- A. Correct
- B. False

**ANSWER: A****QUESTION NO: 2**

As shown in the figure, in the dual-link load balancing hot standby network, AP1 is a new online AP, and both ACs have access configuration. Which AC does AP1 choose to access?

- A. AC1
- B. AC2
- C. Random access
- D. Will not access

**ANSWER: A****QUESTION NO: 3**

What is wrong about the description of the business VAP below?

- A. Provide wireless terminal access
- B. Establish MESH connection establishment
- C. Each RF can be configured in multiples, and the number is not limited.
- D. Each RF can be configured with only one

**ANSWER: B C D**

**QUESTION NO: 4**

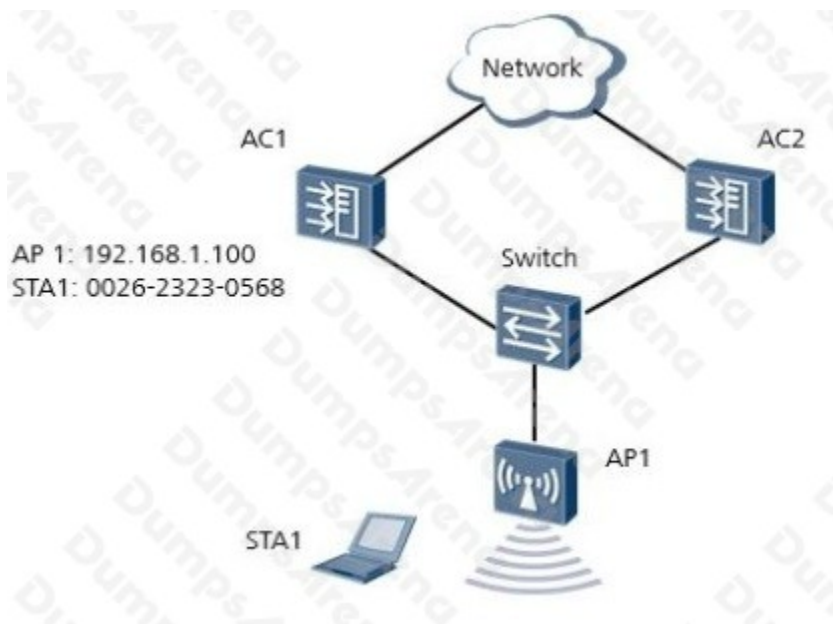
What is wrong about the description of the omnidirectional antenna below?

- A. Omnidirectional antenna distributes the signal evenly over a 360-degree omnidirectional area around the center point
- B. The omnidirectional antenna has a lobe width of 360 degrees horizontally
- C. The omnidirectional antenna has strong energy gathering ability and the direction of the signal is good.
- D. The omnidirectional antenna has a lobe width of 360 degrees vertically

**ANSWER: D**

**QUESTION NO: 5**

In the dual-link cold backup network diagram, STA1 goes online through portal authentication, API connects to AC1 (active AC), and STA1 goes online on AC1 through API. Which of the following statements is TRUE? (Multiple Choice)



- A. AC2 saves API information, and the status of API is standby on AC2.
- B. AC2 saves API information, and the status of API is normal on AC2.
- C. AC2 saves STA1 information, and the status of STA1 is unauthenticated on AC2.
- D. AC2 does not save STA1 information.

**ANSWER: A D**

**QUESTION NO: 6**

Which statements about Layer 2 and Layer 3 roaming are TRUE? (Multiple Choice)

- A. After Layer 3 roaming is performed, the VLAN IDs in the service set of APs are changed.
- B. If the VLAN IDs before and after roaming are the same, the STA roams at Layer 2.
- C. Layer 2 roaming indicates that STAs roam within the same subnet.
- D. Layer 3 roaming indicates that STAs roam between different subnets.

**ANSWER: A C D****QUESTION NO: 7**

In a WLAN network environment, after a Spoof spoofing attack, the attacking terminal cannot be determined by the MAC address.

- A. Correct
- B. False

**ANSWER: A****QUESTION NO: 8**

An engineer cannot establish a connection with the AD server during the configuration of the Agile Controller. The engineer checks the IP address of the AD directory server and the synchronization account and password are correct. The configuration of the AD directory server is not configured. The detailed configuration is

shown in the following figure. What is the cause of this problem?

- A. Synchronization type error
- B. The authentication source name is incorrect.
- C. Port error
- D. Base DN error E. SSL is not enabled

**ANSWER: C D**

**QUESTION NO: 9**

As shown in the figure, in order to prevent the STP packets from being transparently transmitted, the loops affect each other. The following does not need to enable the STP spanning tree protocol?

- A. Only the MPP wired side interface needs to enable STP.
- B. Only the MP3 wired side interface needs to enable STP.
- C. MPP and MP3 wired side interfaces must be enabled with STP.
- D. MP1 and MP2 need to enable STP

**ANSWER: A****QUESTION NO: 10**

As shown in the figure, in a public place, for example, different companies in different floors in an office building, there are multiple SSIDs. After a company turns on the WIDS illegal device counter-function, it will counter other company APs. Which of the following functions can be used? Effectively solve this problem?

- A. Dynamic blacklist function
- B. WIDS counter mode switching
- C. WIDS counterfeit SSID detection
- D. WIDS whitelist function

**ANSWER: D****QUESTION NO: 11**

On the N+1 backup network, a total of 300 APs from AP1 to AP300 are deployed on AC1, and 400 APs from AP301 to AP700 are deployed on AC2. The AC can be configured as a standby AP. When the AP goes online, without changing the configuration, the following statement is wrong?

- A. If the AC1 is faulty, the APs in the AP1 to AP300 will perform the active/standby switchover in the AC3.
- B. If the AC2 is faulty, the APs of the AP301 to the AP700 will perform the active/standby switchover in the AC3.
- C. If AC1 and AC2 are faulty at the same time, only the 500 APs from AP1 to AP500 can perform active/standby switchover in AC3, and the remaining 200 APs cannot go online in AC3. The services of these APs will be interrupted.
- D. After the AC1 or AC2 fails to recover, the APs that go online in AC1 and AC2 are undefined.

**ANSWER: C D**

**QUESTION NO: 12**

Which of the following statements about power adjustment is FALSE?

- A.** An AP's transmit power determines its radio coverage area. APs with higher power have larger coverage areas.
- B.** The global radio calibration algorithm includes the Dynamic Channel Allocation (DCA) algorithm and Transmit Power Control (TPC) algorithm.
- C.** A traditional method to control the radio power is to set the transmit power to the maximum value to maximize the radio coverage area. However, a high transmit power may cause interference to other wireless devices.
- D.** During dynamic power adjustment, it is necessary to select an optimal power to balance the signal coverage with system capacity.

**ANSWER: B**

**QUESTION NO: 13**

The APs that enable the load balancing function do not need to be connected to the same AC, but the wireless terminal can scan the SSIDs of APs that are load balanced with each other.

- A.** Correct
- B.** False

**ANSWER: B**

**QUESTION NO: 14**

A large enterprise needs to deploy a WLAN network. The Huawei chassis switch (S77 / 97 / 127) is available on the current network. To reduce the space resources occupied by devices in the equipment room and facilitate the expansion of the WLAN network in the future, users can insert the switch in the frame switch.

Insert the AC card into the WLAN network. Which of the following types of ACs can be inserted into the frame switch?

- A.** ACU2
- B.** AC6605
- C.** AC6005

D. X1E board

**ANSWER: A D**

**QUESTION NO: 15**

Which are the correct procedures of Mesh route establishment in pro-active mode? (Multiple Choice)

- A.** 1. The MP periodically broadcasts PREQ.  
2. The MPs/MPPs receiving the PREQ reply with unicast PREP.  
3. The route and return route are established between two points.
- B.** 1. The MPP periodically broadcasts RANN.  
2. The MP receiving the RANN sends a unicast PREQ to the MPP.  
3. The MPP replies with a PREP.  
4. The route is established between MP and MPP.
- C.** 1. The MPP periodically broadcasts RANN.  
2. The MP receiving the RANN sends a unicast PREP to the MPP.  
3. The route is established between MP and MPP.
- D.** 1. The MPP periodically broadcasts PREQ.  
2. The MP receiving the PREQ sends a unicast PREP to the MPP.  
3. The route is established between MP and MPP.

**ANSWER: B D**

**QUESTION NO: 16**

The following description of the roaming agent in the hometown is correct?

- A.** Home agent is a device that can communicate with the gateway of the STA home network.
- B.** Home agent is either HAC or HAP
- C.** Home agent is either HAC or FAP

D. Home agent only exists in the AC roaming network

**ANSWER: A B**

**QUESTION NO: 17**

Both the N+1 backup and the dual-link cold backup support the link switchback function. To avoid frequent network switchovers, N+1 backup and dual-link cold backup are waiting for 20 heartbeat cycles by default. Switch back operation.

- A. Correct
- B. False

**ANSWER: A**

**QUESTION NO: 18**

As shown in the figure, the main lobe of the directional antenna has a broadband width of 31 degrees. What is the angle between the two MPs on the right?

- A. 20 degrees
- B. 30 degrees
- C. 40 degrees
- D. 60 degrees

**ANSWER: A B**

**QUESTION NO: 19**

Regarding the usage scenarios and characteristics of various ACs, is the following description correct?

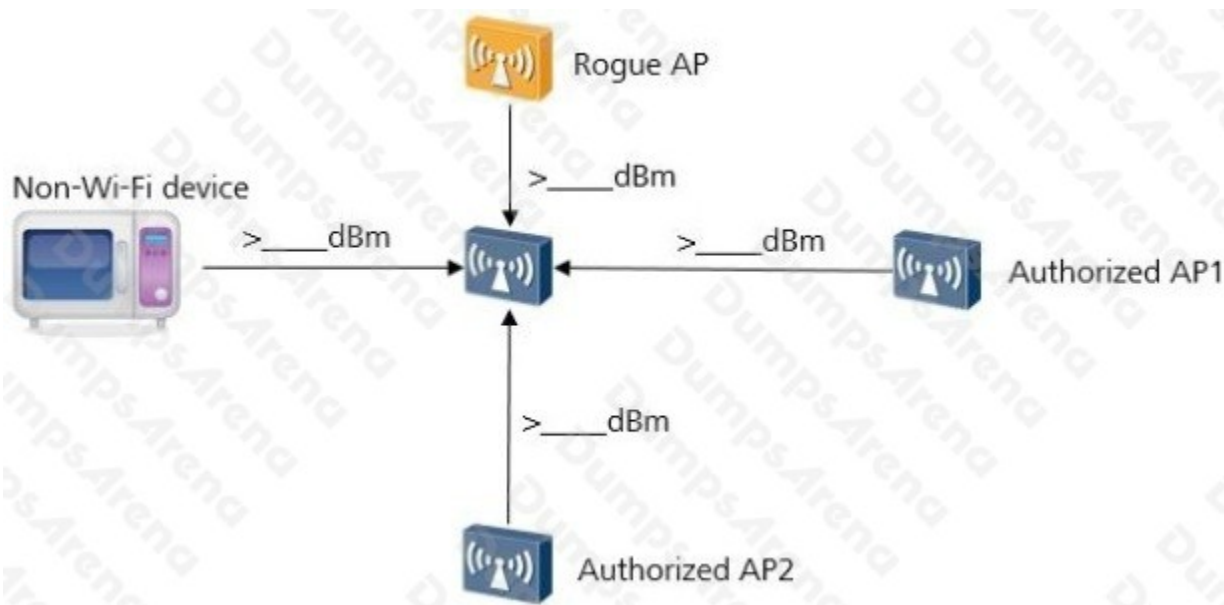
- A. A separate AC board, such as ACU2, is suitable for large-scale networks. In the future, there will be capacity expansion requirements and rack slots will be tight.
- B. Stand-alone box AC, such as AC6605, is suitable for unified construction of wired and wireless networks, and unified management of wired and wireless users.
- C. The board with the AC, such as the X1E board, is suitable for the independent management of wired and wireless users.

D. With the board AC, such as the X1E board, it has higher forwarding performance than the independent AC, such as the AC6605, and can achieve redundant backup at the device level and link level, which makes the WLAN network have better reliability.

ANSWER: A D

### QUESTION NO: 20

According to probe results reported by an AP, an AC can obtain neighbor relationships between the AP and surrounding devices (including authorized APs, rogue APs, and non-Wi-Fi devices), as shown in the following figure. To avoid reported data getting oversized, only data from authorized APs whose signal strength is greater than -85 dBm and rogue APs whose signal strength is greater than ( ) dBm is reported.



- A. 75
- B. 80
- C. 85
- D. 90

ANSWER: B