

# DUMPS ARENA

## ICND Interconnecting Cisco Networking Devices Part 1

Cisco 100-105

Version Demo

Total Demo Questions: 20

Total Premium Questions: 752

Buy Premium PDF

<https://dumpsarena.co>

[sales@dumpsarena.co](mailto:sales@dumpsarena.co)

[sales@dumpsarena.co](mailto:sales@dumpsarena.co)  
[dumpsarena.co](https://dumpsarena.co)

**QUESTION NO: 1**

Which component of an Ethernet frame does a device use to synchronize its receiver clock with other devices on the network?

- A. preamble
- B. EtherType
- C. SFD
- D. payload

**ANSWER: A****QUESTION NO: 2**

Which commands are required to properly configure a router to run OSPF and to add network 192.168.16.0/24 to OSPF area 0? (Choose two.)

- A. Router(config)# router ospf 0
- B. Router(config)# router ospf 1
- C. Router(config)# router ospf area 0
- D. Router(config-router)# network 192.168.16.0 0.0.0.255 0
- E. Router(config-router)# network 192.168.16.0 0.0.0.255 area 0
- F. Router(config-router)# network 192.168.16.0 255.255.255.0 area 0

**ANSWER: B E****Explanation:**

In the router ospf command, the ranges from 1 to 65535 so 0 is an invalid number -> but To configure OSPF, we need a wildcard in the "network" statement, not a subnet mask. We also need to assign an area to this process -> .

**QUESTION NO: 3**

Which device can be used to extend the LAN without using layer3 device?

- A. Access point
- B. Switch

- C. Wireless controller
- D. Firewall

**ANSWER: A**

#### QUESTION NO: 4

What are two common TCP applications? (Choose two.)

- A. TFTP
- B. SMTP
- C. SNMP
- D. FTP
- E. DNS

**ANSWER: B D**

#### Explanation:

SMTP uses TCP port 25, while FTP uses TCP ports 20 and 21. <http://pentestlab.wordpress.com/2012/03/05/common-tcpip-ports/>

#### QUESTION NO: 5 - (SIMULATION)

##### SIMULATION

##### Instructions

Click the Instructions, Scenario, and Topology Tabs to toggle between the screens.

To minimize the windows, click the [-] button.

To reposition a window, you may drag it by the title bar.

You are required to make appropriate configuration changes to SW1 and SW2.

To configure a switch, click the PC icons.

To access SW1 click PC2's console and to access SW2 click PC4's console. The console password configured for both switches is cisco (all lower case)

##### Note:

Most commands that use the "Control" or "Escape" key are not supported or necessary, and the help command does not display all commands of the help system.

## Scenario

You work as a Junior Network Engineer for RADO Network Ltd Company. For testing purposes you are setting up a Layer 2 network in one of your client locations.

## Topology Details

The two Switches, SW1 and SW2, are connected using an Ethernet link.

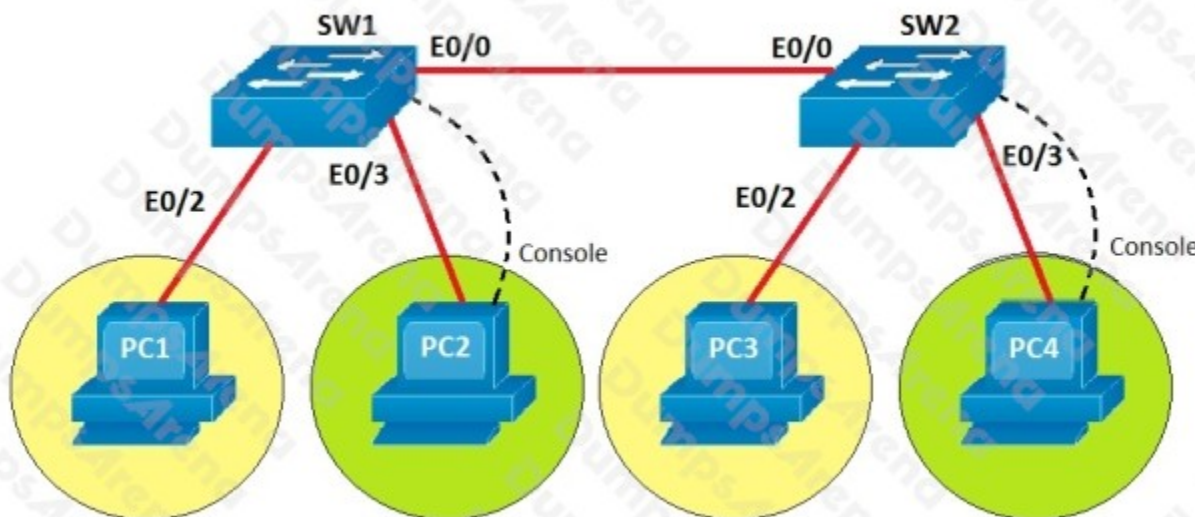
PC1 and PC2 are connected to SW1 and assigned to VLAN 700 and VLAN 800 respectively.

PC3 and PC4 are connected to SW2 and assigned to VLAN 700 and VLAN 800 respectively.

## Configuration requirements

- Create and name VLANs on both SW1 and SW2
- VLAN 700 named as Sales
- VLAN 800 named as Marketing
- Note: VLAN names are case sensitive.
- Configure the switch ports connected to the PCs as access ports.
- Assign the switch ports to corresponding VLANs as indicated on the Topology Tab.
- Manually configure the ports connected between SW1 and SW2 as trunk ports using IEEE 802.1q standards for trunk encapsulation.

Special Note: To gain the maximum number of points, you must complete the necessary configurations as per requirements.



**ANSWER: See explanations below.**

## Explanation:

Switch 1 config:

```
SW1# conf t
SW1(config)# vlan 700
SW1(config-vlan)#name Sales
SW1(config-vlan)#vlan 800
SW1(config-vlan)#name Marketing
SW1(config-vlan)#exit
SW1(config)#interface e 0/2
SW1(config-if)#switchport access vlan 700
SW1(config)#interface e 0/3
SW1(config-if)#switchport access vlan 800
SW1(config-if)#interface e 0/0
SW1(config-if)#switchport mode trunk
SW1(config-if)#switchport trunk encapsulation dot1q
```

Switch 2 configuration:

```
SW2# conf t
SW2(config)# vlan 700
SW2(config-vlan)#name Sales
SW2(config-vlan)#vlan 800
SW2(config-vlan)#name Marketing
SW2(config-vlan)#exit
SW2(config)#interface e 0/2
SW2(config-if)#switchport access vlan 700
SW2(config)#interface e 0/3
SW2(config-if)#switchport access vlan 800
SW2(config-if)#interface e 0/0
SW2(config-if)#switchport mode trunk
SW2(config-if)#switchport trunk encapsulation dot1q
```

## QUESTION NO: 6

Instructions

- THIS TASK DOES NOT REQUIRE DEVICE CONFIGURATION.
- Click the Scenario tab for background information and the Topology tab for the network diagram.
- To access to the console of a device, click the device icon on the Topology tab or click a device tab.
- To access the four multiple-choice questions, click the Questions tab then click the boxes numbered 1 through 4 on the top left of the panel. Be sure to answer all four questions before clicking Next.

Scenario:

Router R1 connects the main office to internet, and routers R2 and R3 are internal routers

NAT is enabled on Router R1

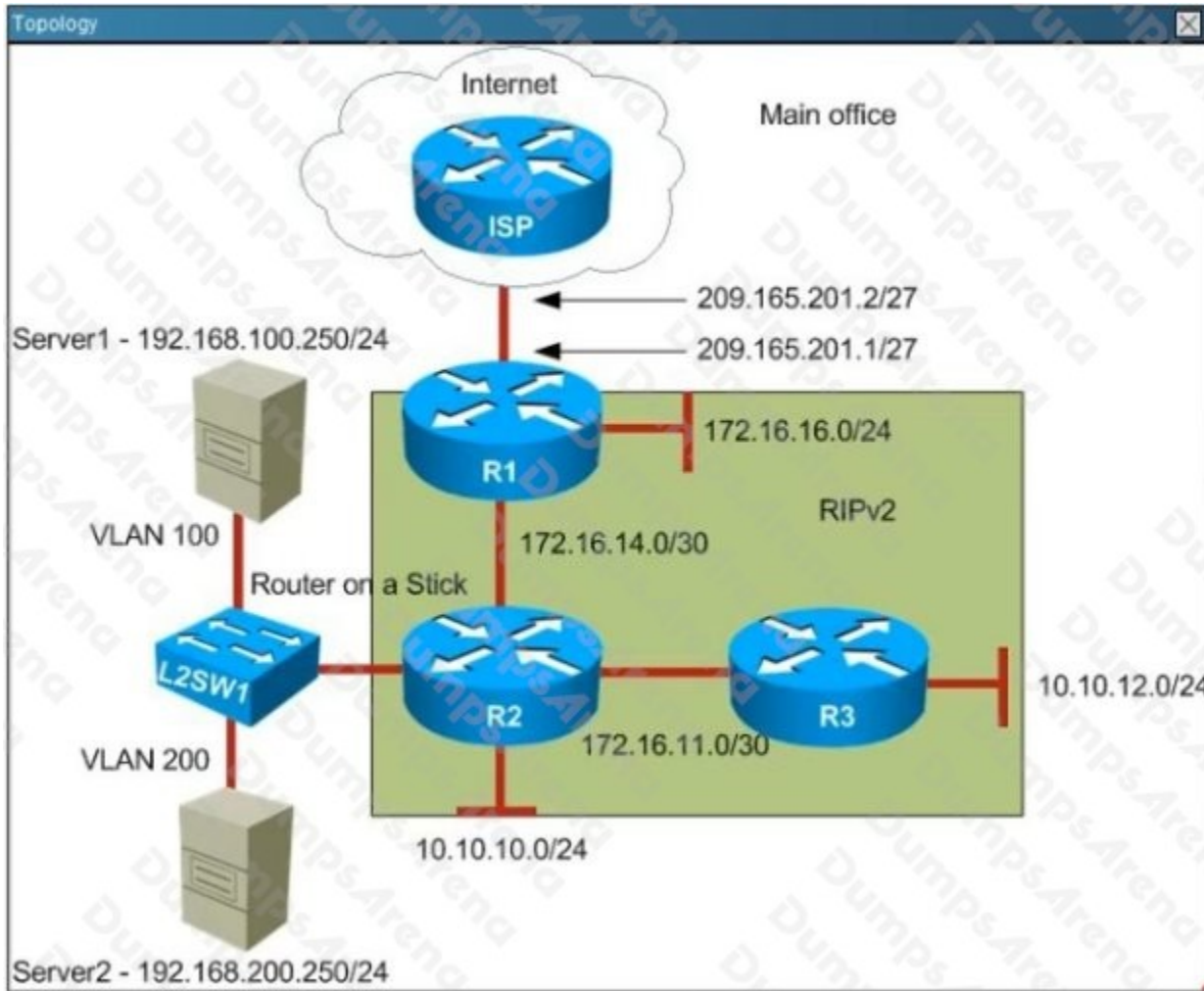
The routing protocol that is enabled between R1, R2 and R3 is RIPv2

R1 sends default route into RIPv2 for internal routers to forward internet traffic to R1

Server1 and Server 2 are placed in VLAN 100 and 200 respectively, and are still running router on stick configuration with router R2.

You have console access on R1, R2, R3 and L2SW1 devices.

Use only show commands to troubleshoot the issues.







Users in the main office complain that they are unable to reach Internet sites. You observe that traffic destined for the ISP router is not forwarded correctly on R1. What is the root cause of the issue?

Ping to Internet server shows the following results from R1:

```
R1#ping 209.165.200.225
```

```
Type escape sequence to abort
```

```
Sending 5, 100-byte ICMP Echos to 209.165.200.225, timeout is 2 seconds:
```

```
...
```

```
Success rate is 0 percent(0/5)
```

- A. The next-hop router address for the default route is incorrectly configured
- B. The default route that is to the ISP router is configured with an AD of 255
- C. The default route that is to the ISP router is not configured on R1
- D. R1 is configured as the DHCP as the DHCP client and is not receiving the default route via DHCP from the ISP router

**ANSWER: C**

#### QUESTION NO: 7

Which statement about static routes is true?

- A. The source interface can be configured to make routing decisions.
- B. A subnet mask is entered for the next-hop address.
- C. The subnet mask is 255.255.255.0 by default.
- D. The exit interface can be specified to indicate where the packets will be routed.

**ANSWER: D**

#### Explanation:

Static routing can be used to define an exit point from a router when no other routes are available or necessary. This is called a default route.

#### QUESTION NO: 8

Which three options are fields in a basic ethernet data frame?

- A. preamble

- B. time to live
- C. version
- D. header checksum
- E. length type
- F. frame check sequence

**ANSWER: A E F**

#### **QUESTION NO: 9**

Which two characteristics of plenum cable are true? (Choose two.)

- A. It is more fire-resistant than nonplenum cable.
- B. It can be installed above a drop-down ceiling without additional safety precautions.
- C. It is less fire-resistant than nonplenum cable.
- D. When it burns, it may release more toxins than nonplenum cable.
- E. It requires additional safety precautions when installed above a drop-down ceiling.

**ANSWER: A B**

#### **QUESTION NO: 10**

Which description refers to administrative distance?

- A. the advertised metric to reach a network
- B. the cost of a link between two neighboring routers
- C. the cost to reach a network that is administratively set
- D. a measure of the trustworthiness of a routing information source

**ANSWER: D**

#### **QUESTION NO: 11**

A router with a default setting deployed, how will act if it received mistype command?

- A. Disable DNS look up
- B. Recognizing the command
- C. Try to resolve the command to an IP address
- D. Try to correct the command
- E. Show error message

**ANSWER: C**

**QUESTION NO: 12 - (DRAG DROP)**

DRAG DROP

Drag and drop the logging configuration commands from the left on to the logging locations they configure on the right.

Select and Place:

logging host	syslog server
logging buffer	VTY session
logging console	console
terminal monitor	internal buffer

**ANSWER:**

**QUESTION NO: 13**

The network administrator is using a Windows PC application that is called putty.exe for remote communication to a switch for network troubleshooting. Which two protocols could be used during this communication? (Choose two).

- A. SNMP
- B. HTTP
- C. Telnet
- D. RMON
- E. SSH

**ANSWER: C E****QUESTION NO: 14**

What is the default administrative distance of the OSPF routing protocol?

- A. 90
- B. 100
- C. 110
- D. 120
- E. 130
- F. 170

**ANSWER: C****Explanation:**

Default Distance Value Table

This table lists the administrative distance default values of the protocols that Cisco supports:

Route Source	Default Distance Values
Connected interface	0
Static route	1
Enhanced Interior Gateway Routing Protocol (EIGRP) summary route	5
External Border Gateway Protocol (BGP)	20
Internal EIGRP	90
IGRP	100
OSPF	110
Intermediate System-to-Intermediate System (IS-IS)	115
Routing Information Protocol (RIP)	120
Exterior Gateway Protocol (EGP)	140
On Demand Routing (ODR)	160
External EIGRP	170
Internal BGP	200
Unknown*	255

If the administrative distance is 255, the router does not believe the source of that route and does not install the route in the routing table.

**QUESTION NO: 15**

Which protocol verifies connectivity between two switches that are configured with IP addresses in the same network?

- A. ICMP
- B. STP
- C. VTP
- D. HSRP

**ANSWER: A**

**QUESTION NO: 16**

Which two commands will display the current IP address and basic Layer 1 and 2 status of an interface? (Choose two.)

- A. router#show version
- B. router#show ip interface
- C. router#show protocols
- D. router#show controllers
- E. router#show running-config

**ANSWER: B C****QUESTION NO: 17**

Some routers have been configured with default routes. What are some of the advantages of using default routes? (Choose two)

- A. They establish routes that will never go down.
- B. They keep routing tables small.
- C. They require a great deal of CPU power.
- D. They allow connectivity to remote networks that are not in the routing table.
- E. They direct traffic from the internet into corporate networks.

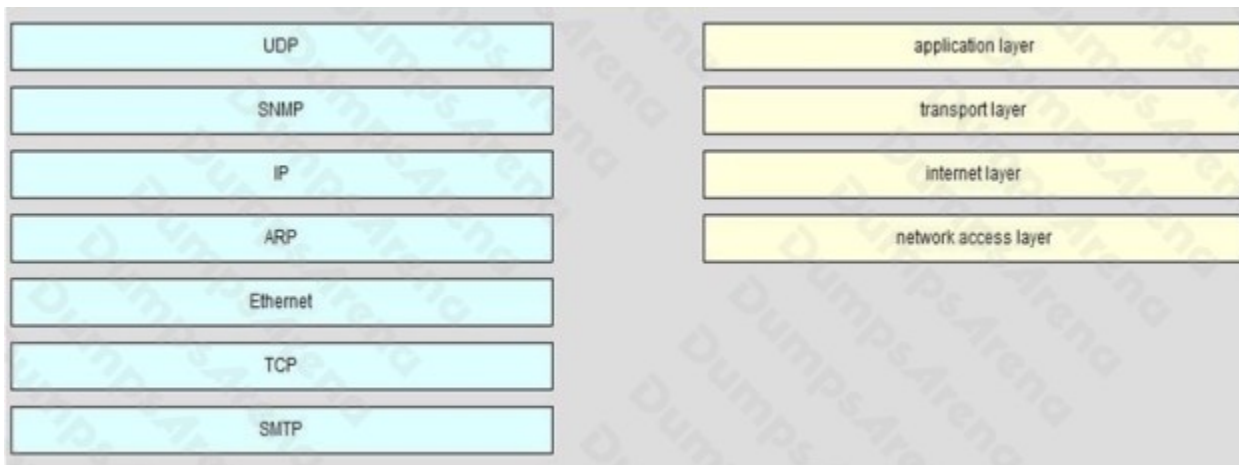
**ANSWER: B D****Explanation:**

Cisco administration 101: What you need to know about default routes <http://www.techrepublic.com/article/cisco-administration-101-what-you-need-to-know-about-default-routes/>

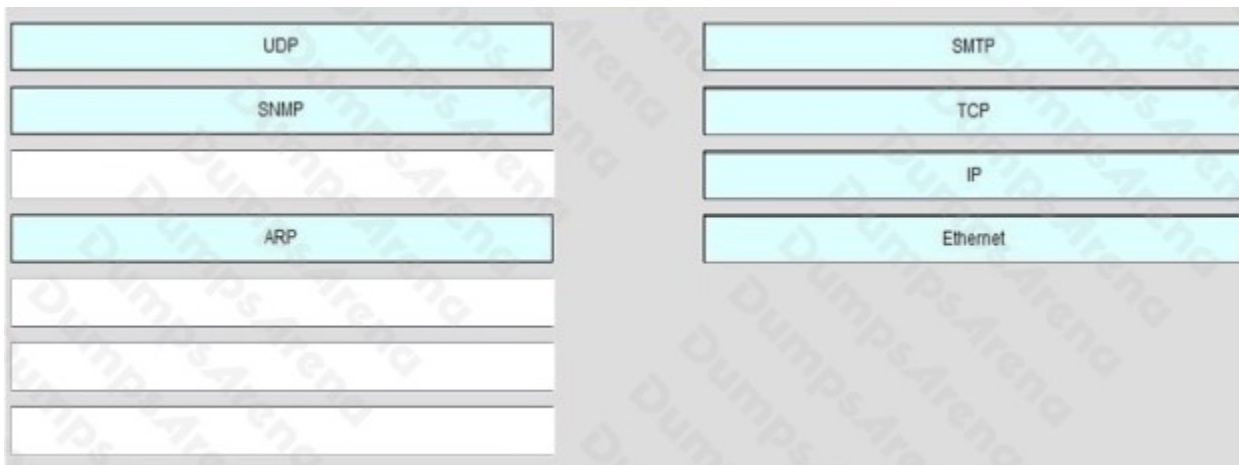
**QUESTION NO: 18 - (DRAG DROP)****DRAG DROP**

On the left are various network protocols. On the right are the layers of the TCP/IP model. Assuming a reliable connection is required, move the protocols on the left to the TCP/IP layers on the right to show the proper encapsulation for an email message sent by a host on a LAN. (Not all options are used.)

**Select and Place:**



**ANSWER:**



## QUESTION NO: 19

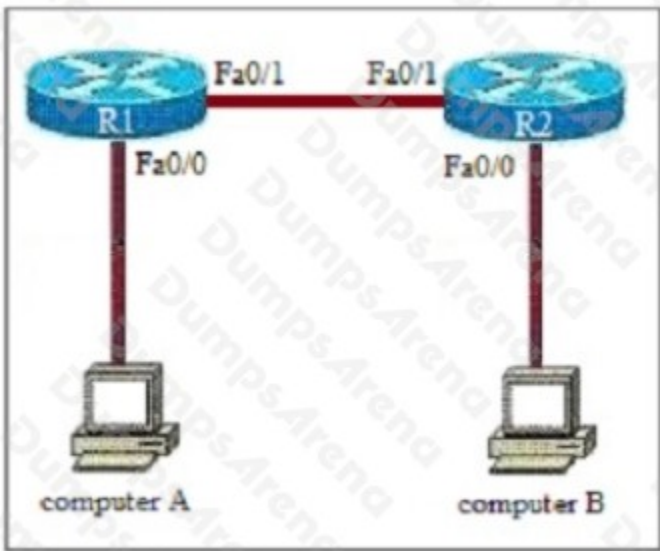
Which two types of information are held in the mac address table ?

- A. destination ip addresses
- B. protocols
- C. port numbers
- D. mac address
- E. source ip address

**ANSWER: C D**

**QUESTION NO: 20**

Refer to Exhibit. If Computer A is sending traffic to computer B, which option is the source ip address when a packet leaves R1 on interface F0/1?



- A. IP address of the R2 interface F0/1
- B. Ip address of computer B
- C. Ip address of R1 interface F0/1
- D. Ip address of Computer A

**ANSWER: D**