

DUMPS ARENA

Integrating HPE Synergy Solutions

HP HPE0-S50

Version Demo

Total Demo Questions: 9

Total Premium Questions: 60

Buy Premium PDF

<https://dumpsarena.co>

sales@dumpsarena.co

sales@dumpsarena.co
dumpsarena.co

QUESTION NO: 1

A Synergy7 integrator is modify the network uplink configuration of a Synergy environment that uses HPE Synergy 40GB F8 Switch Modules for Connectivity.

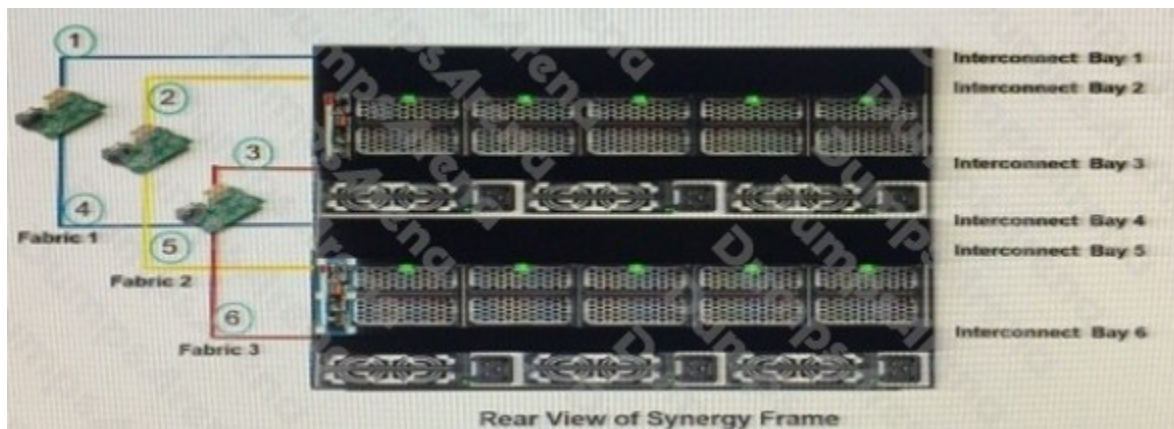
What must the Synergy integrator do to make the necessary modification?

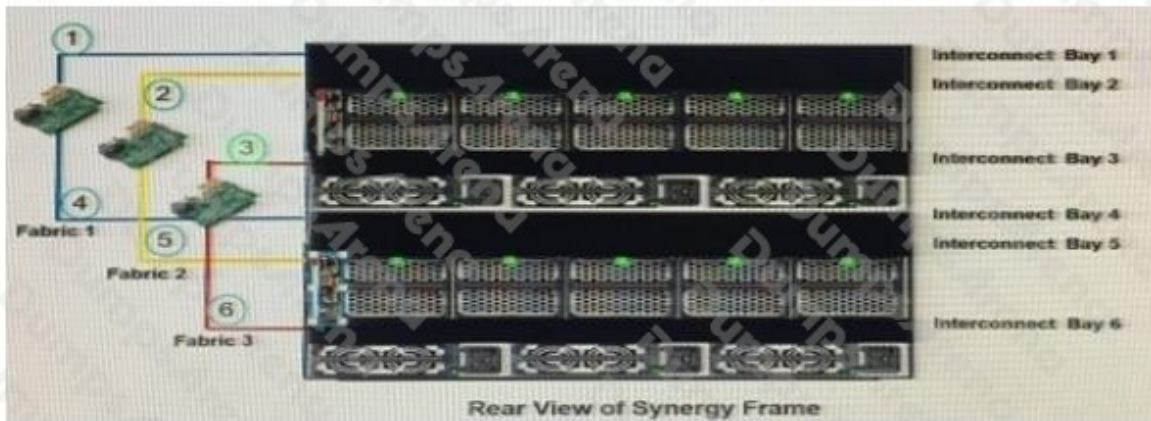
- A. Connect to the switch module CLI and the necessary configuration commands.
- B. Connect to the end-of row (EoR) switch and push the configuration to the switch modules.
- C. Connect to the end-of row running on the Composer module to modify Logical Interconnect Group (LIG) configuration
- D. Connect keyboard, monitor, and mouse to the frame Link module, and run the network configuration wizard.

ANSWER: D**QUESTION NO: 2 - (HOTSPOT)**

A customer needs to incorporate the HPE Synergy D340 Compostable Storage Module into its environment:

Click the adapter associated with the fabric in which the customer should install the p542 controller.

**ANSWER:**



Explanation:

QUESTION NO: 3

How can a Synergy integrity increase the efficiency with a Synergy can be provisioned? (Select two.)

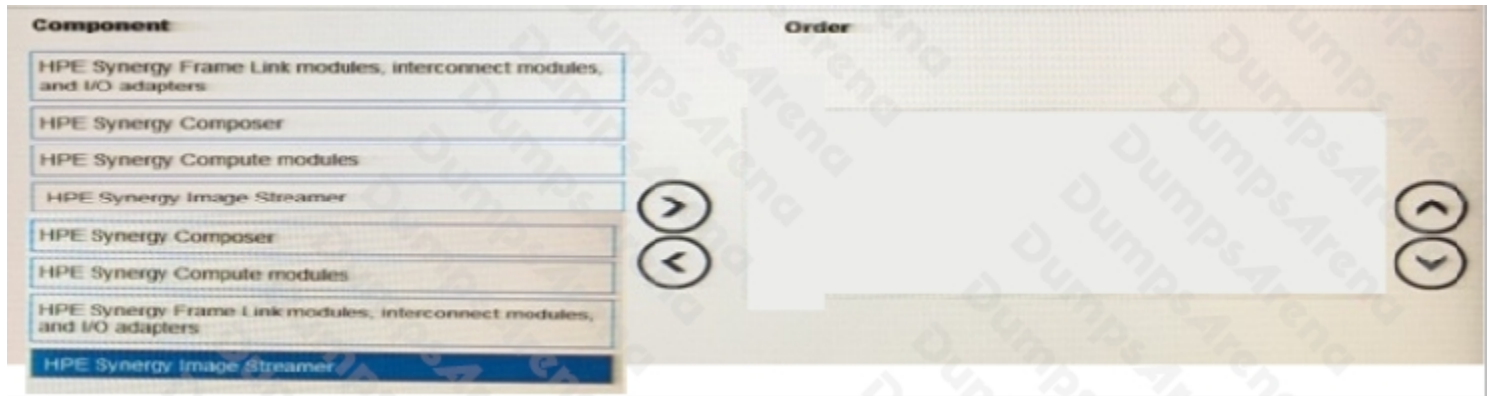
Use PowerShell to automate configuration and application of server profiles.

- A. Use Image Streamer to provide a stateless OS environment
- B. Associate all Synergy frames with the same data center
- C. Use a Multimode Link Aggregation Group (MLAG) to automate link failover
- D. Use Composer as a PXE server to automate OS deployment

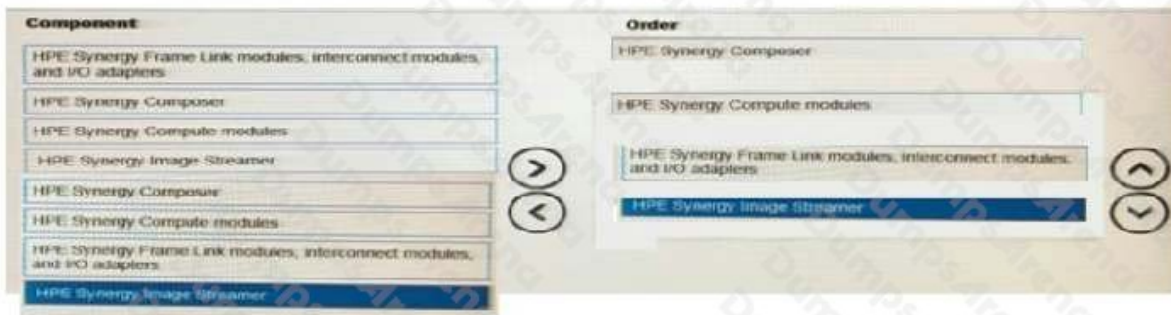
ANSWER: A B

QUESTION NO: 4 - (DRAG DROP)

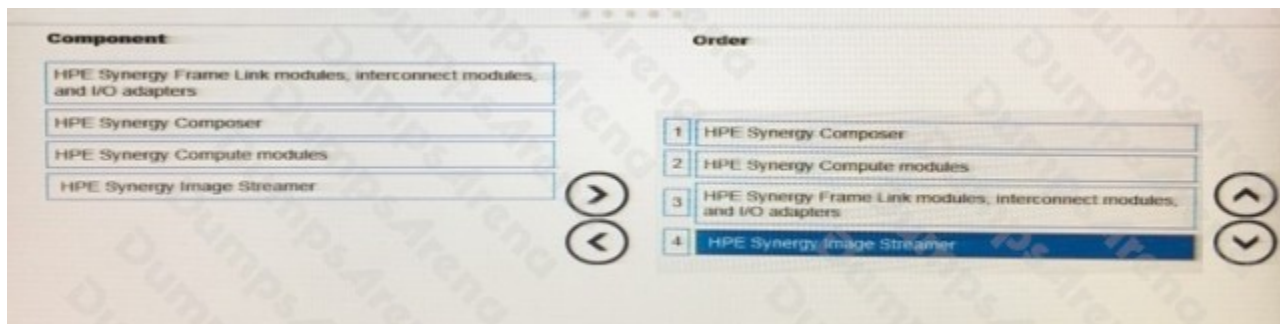
Use the arrows or click and drag the HPE Synergy components on the left to their correct order firmware update, based on HPE best practices, on the right.



ANSWER:



Explanation:



QUESTION NO: 5

A customer needs increased available bandwidth and highly available network between Virtual Connect Interconnects. Which two steps must the Synergy integrator perform in the configuration to meet the customer needs? (Select two.)

- A. Link Ports L1 and L4 on Master LCMs to port L1 and L2 on the first Satellite ICM.
- B. Install Redundant Frame Link Modules and a second management ring.
- C. Enable Multimode Link Aggregation Group (MLAG).

- D. Enable Intelligent Resilient Fabric (IRF) on the Virtual Connect Modules.
- E. Connect ports Q7 and Q8 master interconnect Modules (ICM).

ANSWER: B E

QUESTION NO: 6

A customer is using HPE Synergy Composer to manage the compute module and 3PAR volume attachments: The database attachment to VMware servers has run out of space.

What is the most efficient procedure the Synergy integrator should to extend the volume with minimum effect on the compute modules?

- A. Set the volume to maintenance mode and increase the volume in 3PAR SSMC.
- B. Create a snapshot and increase the capacity of the snapshot directly in the Synergy Composer.
- C. Increase the capacity of the volume in the combined profile form.
- D. Increase the capacity of the volume directly in the Synergy Composer.

ANSWER: C

QUESTION NO: 7

A Synergy Integrator is configuring an HPE Synergy environment with two HPE Connect 40Gb F8 modules. The Synergy integrator has four 40Gb uplinks connected to two upstream switches and needs all compute modules to share the full 160Gb of available bandwidth. The upstream are interconnected in a virtual port channel (vPC) pair.

What should the integrator do to ensure that the switch configuration does not result in a network loop?

- A. Cross Connect the Volume Connect modules to the upstream switch and select all four 40Gb ports for the uplink. Virtual Connect will automatically configure the Multiple Link Aggregation Group. (MLAG).
- B. Create two separate Virtual Connect uplinks. Select two ports from each module for each uplink. Configure spanning tree protocol (STP) on both Virtual Connect uplinks to default port forward mode.
- C. Cross connect the Virtual Connect modules to the upstream switches and select all four 40Gb ports for the uplink. Configure spanning tree protocol (STP) on the Virtual Connect uplink to default to port forward mode.
- D. Create two separate Virtual Connect uplinks. Select one port from each module for each uplink. Use two separate Logical Interconnect Groups (LIGs) to keep the uplinks from looping.

ANSWER: A

QUESTION NO: 8

When should IP address be assigned using an IPv6 address pool in the Composer? (Select two.)

- A. when configuring management NICs in an operating system
- B. when booting to an iSCSI initiator with image Streamer
- C. when PXE booting from the deployment server
- D. when configuration Composer appliance
- E. when configuration interconnects modules

ANSWER: D E

QUESTION NO: 9

A customer is planning an HPE Synergy solution with 20 frames and needs to minimize the number of management ports that are required to connect the frames into the existing management network.

Which procedure should the Synergy integrator use to address the customer's concern?

- A. Connect FLMs from all frames into a management ring; Then connect the management ring to the customer's management network using two uplinks.
- B. Connect FLMs from all frames to two external switches for redundancy; Then connect the two uplinks from the two switches into the customer management network.
- C. Connect the RJ-45 front port of each frame to two external switches for redundancy; Then connect the uplink from the two switches into the customer's management network.
- D. Connect the RJ-45 front ports of each frame to an external switch. Then connect the uplink from the external switch into the customer management network.

ANSWER: A