

DUMPS ARENA

Excel 2016 Expert: Interpreting Data for Insights

Microsoft 77-728

Version Demo

Total Demo Questions: 5

Total Premium Questions: 26

Buy Premium PDF

<https://dumpsarena.co>

sales@dumpsarena.co

sales@dumpsarena.co
dumpsarena.co

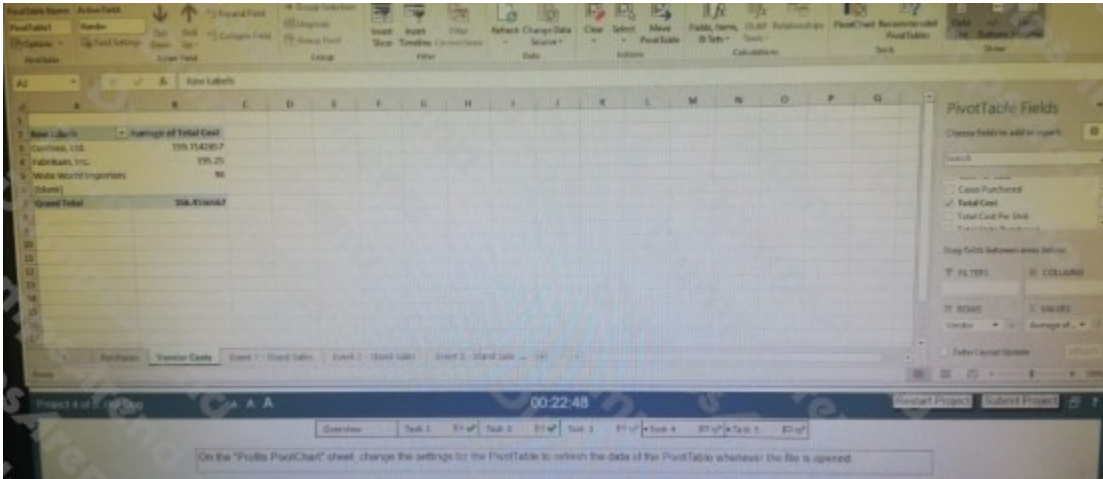
Topic Break Down

Topic	No. of Questions
Topic 1, Project 1	5
Topic 2, Project 2	5
Topic 3, Project 3	5
Topic 4, Project 4	5
Topic 5, Project 5	6
Total	26

QUESTION NO: 1 - (SIMULATION)

CORRECT TEXT

Exhibit:



You are an accountant for an event stadium. You have created a workbook to keep track of the four vendors that are available at the stadium.

Task 4:

Exhibit:



Add cells C53 E56 on the “Workforce Statistics” worksheet to the Watch Window.

ANSWER: Seetheexplanationbelow.

Explanation:

:

On the formulas tab, click on Watch window. Click on add watch and add the rangeC53:E56

QUESTION NO: 2 - (SIMULATION)

CORRECT TEXT

Exhibit:

Event 1	Vendor	Units per Case	Cost Per Case	Cases Purchased	Total Cost	Total Cost Per Unit	Total Units	Sold	Units Remaining
Hot Dogs	Conibos, Ltd.	25	8.30	75	622.50	8.30	2400	1500	900
Turkey Dogs	Fabrikam, Inc.	20	9.70	40	388.00	9.70	800	800	0
Veggie Dogs	Conibos, Ltd.	10	5.20	10	52.00	5.20	100	100	0
Total Dogs							2400		
Bun Cases Needed:							120		
Pretzels	Wilde World Importers	50	9.80	10	98.00	9.80	500	500	0
Soda	Fabrikam, Inc.	100	21.30	10	213.00	21.30	1000	1000	0
Milk Shakes	Fabrikam, Inc.	30	15.80	5	471.00	15.80	150	150	0
Potato Chips	Conibos, Ltd.	100	20.70	5	207.00	20.70	500	500	0
Popcorns	Fabrikam, Inc.	30	23.00	5	690.00	23.00	250	250	0
Peanuts	Conibos, Ltd.	100	14.90	1	14.90	14.90	100	100	0
Ice Cream Sandwiches	Conibos, Ltd.	30	15.50	2	31.00	15.50	100	100	0

You are an accountant for an event stadium. You have created a workbook to keep track of the four vendors that are available at the stadium.

Task 1:



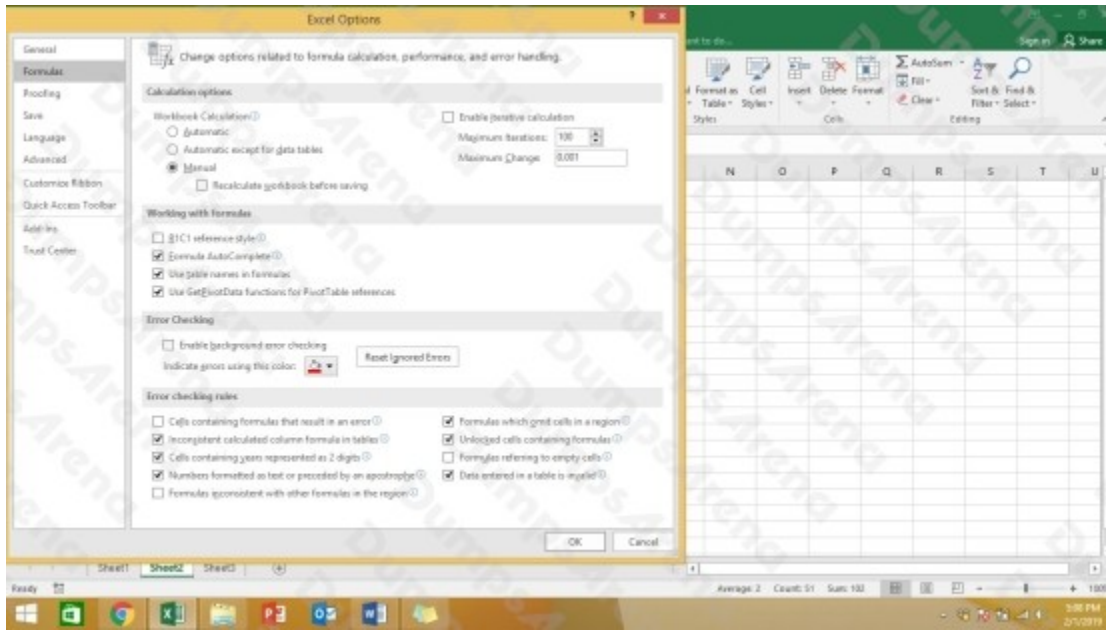
Modify Excel options to Prevent formulas from being automatically evaluated when data changes. Formulas should not be evaluated when a workbook is saved.

ANSWER: Seetheexplanationbelow.

Explanation:

:

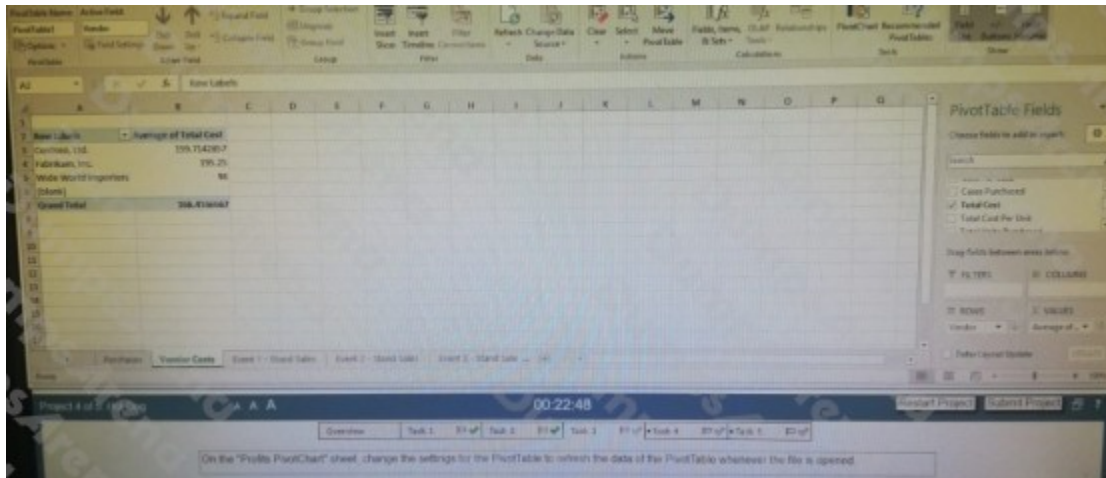
Go to file – options – formulas and check manual in calculation options. Uncheck recalculate workbook before saving option.



QUESTION NO: 3 - (SIMULATION)

CORRECT TEXT

Exhibit:



You are an accountant for an event stadium. You have created a workbook to keep track of the four vendors that are available at the stadium.

Task3:

On the “Profits PivotChart” sheet change the settings for the PivotTable to refresh the data of the PivotTable whenever the file is opened

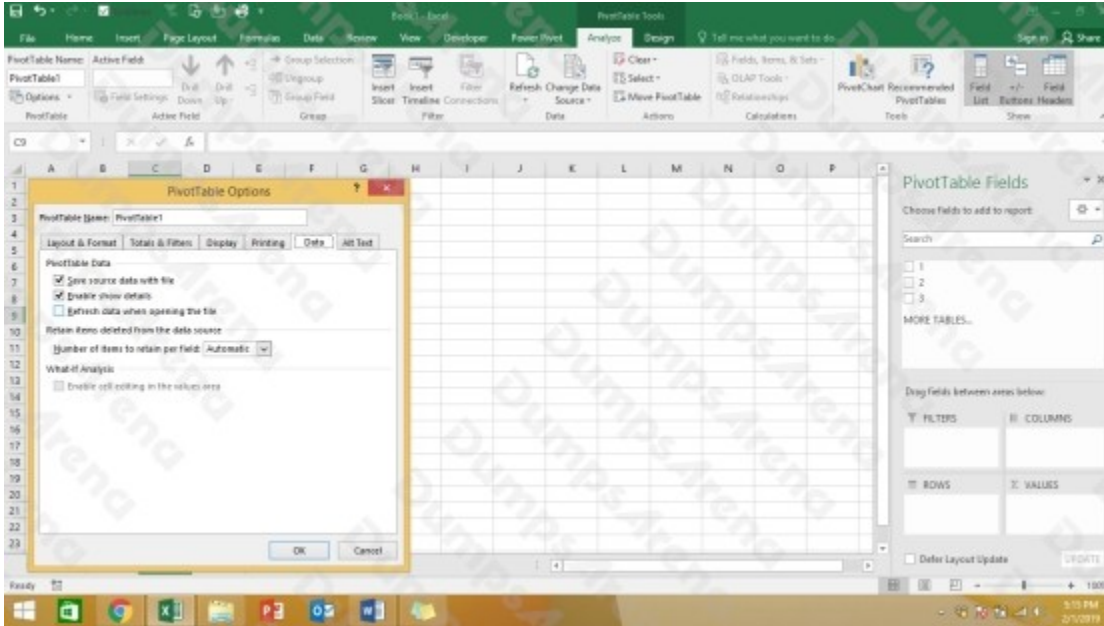
ANSWER: Seetheexplanationbelow.

Explanation:

:

Right click on Pivottable and select Pivottable options

On the data tab click on "Refresh data when opening the file"



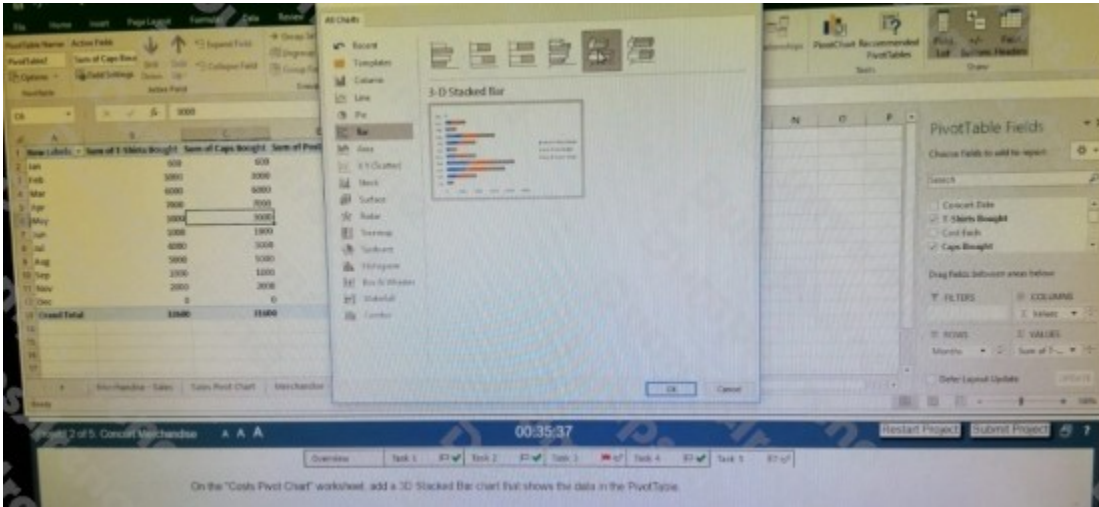
QUESTION NO: 4 - (SIMULATION)

CORRECT TEXT

You have been a manager of a band for the past year. You are reviewing the data you have about the merchandise that was sold at all of the concerts.

Task5:

Exhibit:

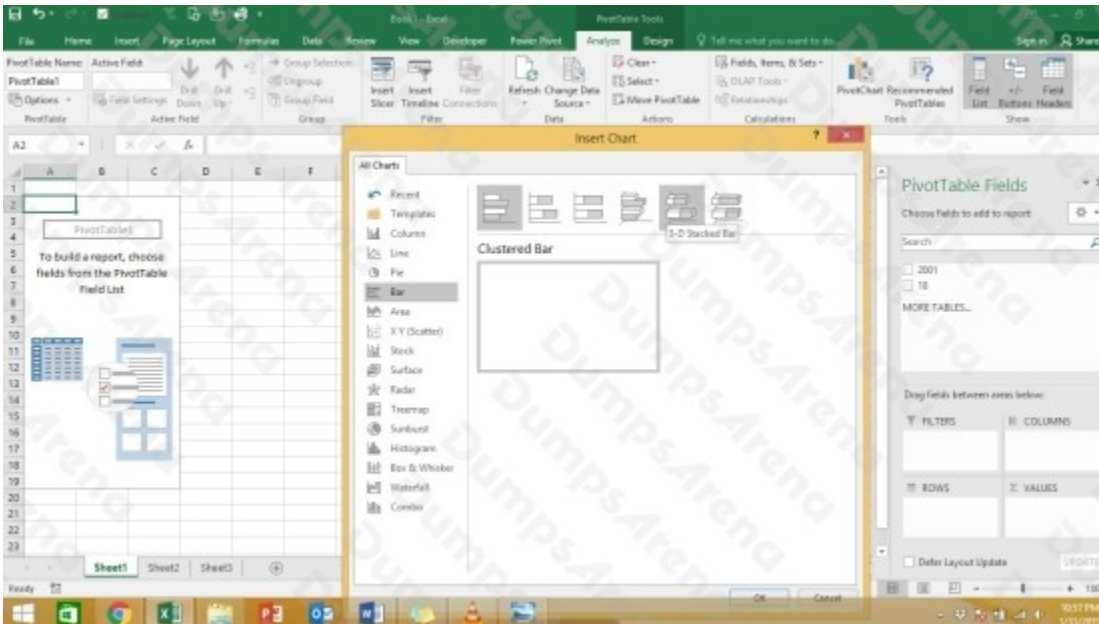


On the “Cost Pivot Chart” worksheet add a 3D Stacked Bar Chart that shows the data in the PivotTable.

ANSWER: See the explanation below.

Explanation:

Select the PivotTable and from the Analyze tab select the chart as mentioned below



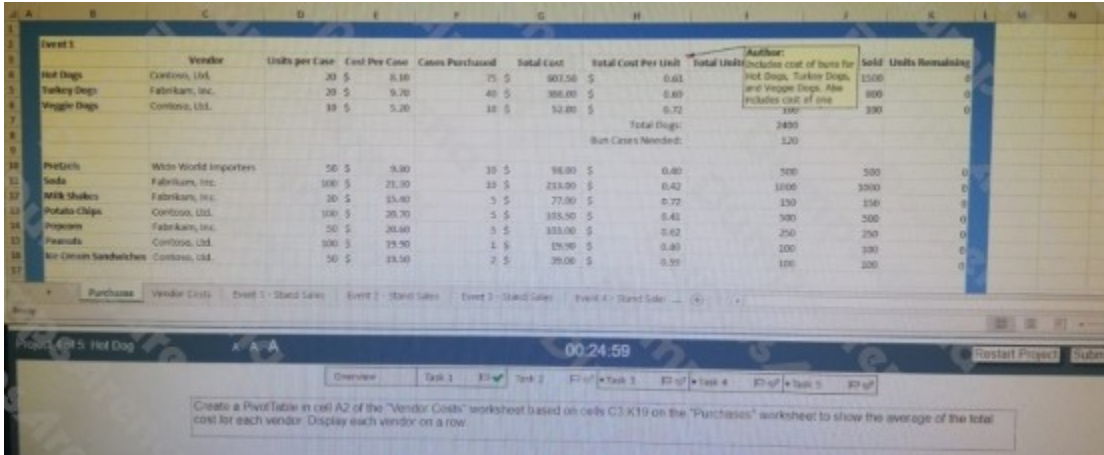
QUESTION NO: 5 - (SIMULATION)

CORRECT TEXT

You are an accountant for an event stadium. You have created a workbook to keep track of the four vendors that are available at the stadium.

Task2:

Create a PivotTable in Cell A2 of the “Vendor Costs” worksheet based on cells C3 K19 on the “Purchases” worksheet to show the average of the total cost for each vendor. Display each vendor on a row.



ANSWER: Seetheexplanationbelow.

Explanation:

- ☞ Select the range C3:K19 on the Purchases worksheet
- ☞ Go to Insert – Pivot table
- ☞ Put Vendor in Row area and total cost for each vendor in values
- ☞ Change the sum of total cost for each vendor to Average of total cost for each vendor by going to value field settings