

# DUMPS ARENA

## Cisco Routing and Switching Solutions Specialist

Cisco 644-066

Version Demo

Total Demo Questions: 10

Total Premium Questions: 64

Buy Premium PDF

<https://dumpsarena.co>

[sales@dumpsarena.co](mailto:sales@dumpsarena.co)

[sales@dumpsarena.co](mailto:sales@dumpsarena.co)  
[dumpsarena.co](https://dumpsarena.co)

**QUESTION NO: 1**

What are four characteristics of the Cisco ASR 1000 Series Aggregation Services Routers? (Choose four.)

- A. It is launched with three chassis sizes: 2RU, 4RU, and 6RU.
- B. It provides SPAs that cannot be used interchangeably with other platforms.
- C. It has a QFP that provides faster, easier provisioning of new services, low-touch deployment, and faster qualification.
- D. It provides a multiplexer system that allows rack-and-roll architecture.
- E. It provides high availability with complete integration of control plane and forwarding plane.
- F. It provides state-of-the-art QoS and is designed to be oversubscribed so that it is able to handle more traffic than the total system bandwidth.

**ANSWER: A C D F****QUESTION NO: 2**

Which two statements accurately describe the impact of BYOD to the network? (Choose two.)

- A. TCO is reduced because employees use their privately owned devices.
- B. BYOD increases productivity, but IT must find ways to integrate the utilized devices seamlessly with wired as well as wireless networks.
- C. BYOD adds the requirement to support multiple operating systems.
- D. Corporate users expect the same look and feel when using their own devices.

**ANSWER: B C****QUESTION NO: 3**

What are two characteristics of the Cisco Enterprise WAN and MAN Architecture? (Choose two.)

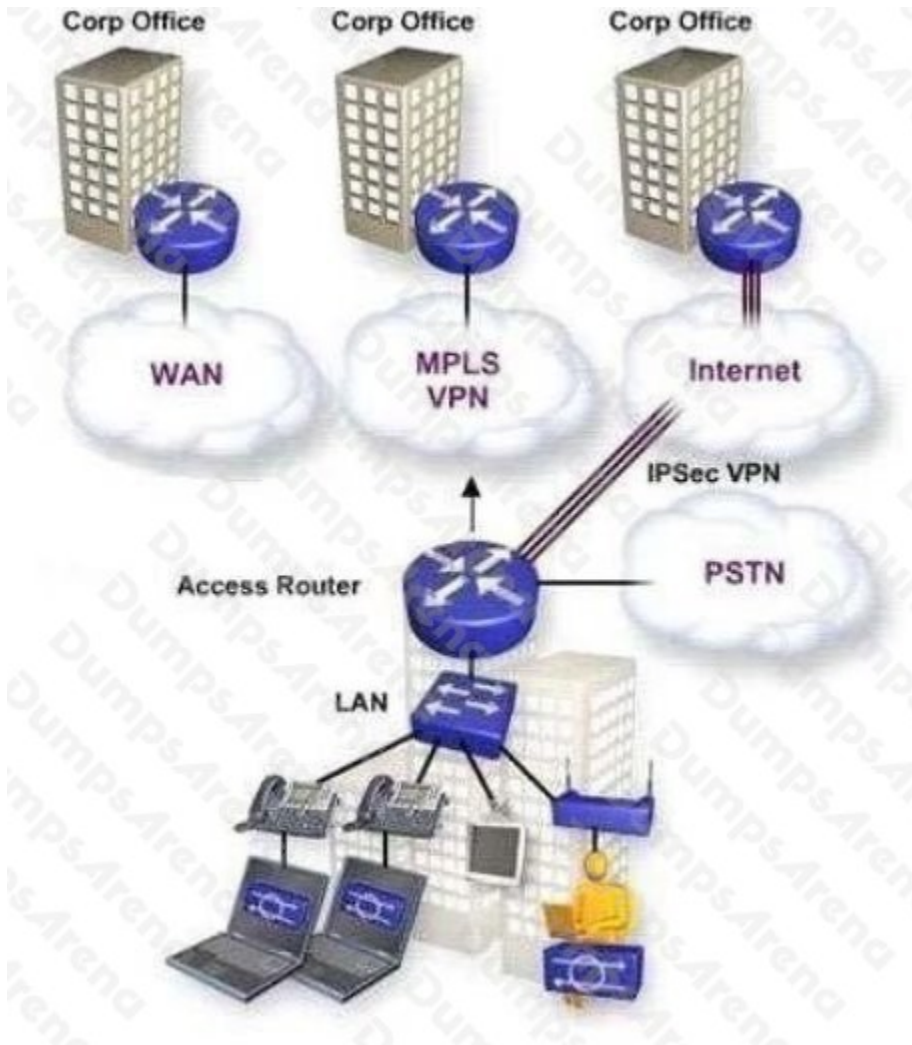
- A. It provides converged voice, video, and data services specifically to campus architectures.
- B. It needs to accurately combine traffic by devices, users, and/or applications.
- C. It provides cost-effective interoperation, and suits a variety of IT budgets and growth expectations.
- D. It addresses deployment scenarios that are not typical.

E. It addresses the drive for heightened security.

ANSWER: C E

QUESTION NO: 4

Refer to the exhibit. Which PIN architecture is represented?



- A. Branch
- B. Campus
- C. Data Center
- D. Teleworker

**ANSWER: A**

**QUESTION NO: 5**

Which layer in a hierarchical network is considered optional in smaller campus networks?

- A. access
- B. distribution
- C. core
- D. remote
- E. DMZ
- F. aggregation

**ANSWER: C**

**QUESTION NO: 6**

Which Cisco PIN architecture uses Cisco Integrated Services Routers to support existing and emerging IP technologies, including IP telephony and video, point-of-sale terminals, kiosks, and RFID devices?

- A. Data Center
- B. Teleworker
- C. Campus
- D. Branch

**ANSWER: D**

**QUESTION NO: 7**

You have a client that currently has a single connection to an ISP. Your client is growing rapidly and would like to provide more capacity to the Internet without losing the ability to support high availability. Which methodology will support dual-homed connections to the same ISP and also support high availability?

- A. VRRP
- B. HSRP
- C. RPR+

D. GLBP

**ANSWER: D**

**QUESTION NO: 8**

When issuing the Cisco IOS command show power in the Cisco Catalyst 6509 Switch, which four types of information can be gathered? (Choose four.)

- A. IOS revision level
- B. operational state
- C. line card revision
- D. power supply fan status
- E. line card administrative state and slot location
- F. power capacity in watts and amperage by chassis and line card

**ANSWER: B D E F**

**QUESTION NO: 9**

Which two of these are features of the Cisco 2851 Integrated Services Router, but not features of Cisco 1800 Series Integrated Services Routers? (Choose two.)

- A. 32-Gbps switching bus
- B. built-in wireless module
- C. Cisco SDM for simplified management
- D. two integrated 10/100/1000 Ethernet ports
- E. Power over Ethernet support for 10/100 Ethernet ports
- F. slots dedicated to Cisco High-Density Analog and Digital Extension Module for Voice and Fax

**ANSWER: D F**

**QUESTION NO: 10**

During the baselining process, what should you do immediately after you compile an inventory?

- A. verify that the SNMP MIB is supported in the relevant core device
- B. poll and record specific SNMP MID objects from the device
- C. fix identified, immediate problems
- D. implement monitoring using SNMP or RMON

**ANSWER: A**