

# DUMPS ARENA

## VCE Vblock System Deployment and Implementation – Virtualization

VCE 210-015

Version Demo

Total Demo Questions: 10

Total Premium Questions: 93

Buy Premium PDF

<https://dumpsarena.co>

[sales@dumpsarena.co](mailto:sales@dumpsarena.co)

[sales@dumpsarena.co](mailto:sales@dumpsarena.co)  
[dumpsarena.co](https://dumpsarena.co)

## Topic Break Down

Topic	No. of Questions
Topic 1, Installation	22
Topic 2, Configuration	26
Topic 3, Administration	23
Topic 4, Troubleshooting	22
Total	93

**QUESTION NO: 1**

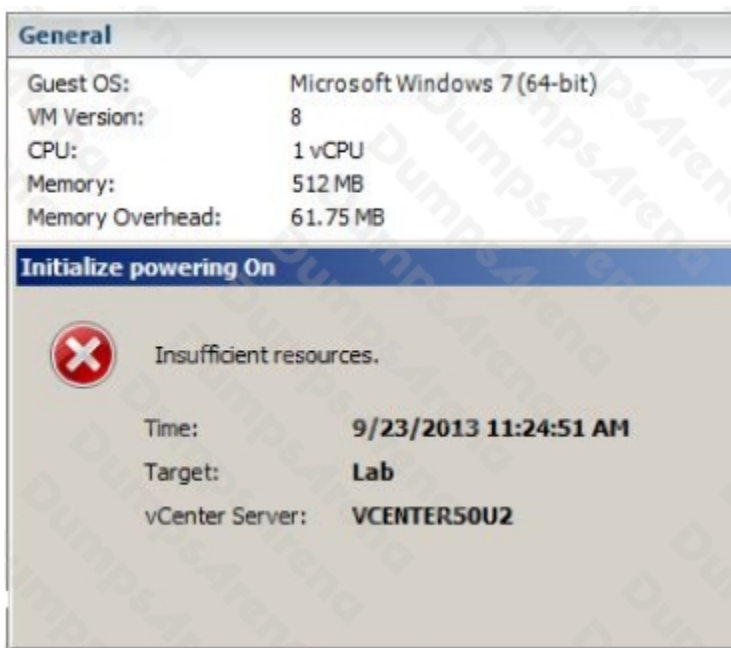
You want to reset hardware sensors in the vSphere client connected to vCenter.

Which statement describes how to accomplish this task?

- A. From the Hosts and Clusters view select a host, select the Hardware Status tab, and select the Reset sensors button.
- B. From the Hosts and Clusters view select a host, select the Summary tab, select the Reset sensors button.
- C. Select a virtual machine on the host, install the VMware tools, and reboot the host.
- D. Hardware status can only be reset from the command line.

**ANSWER: A****QUESTION NO: 2**

Click the Exhibit button.



Referring to the exhibit, which two actions would allow powering on the virtual machine? (Choose two.)

- A. Increase the memory reservation on the virtual machine.
- B. Decrease the memory reservation on the virtual machine.
- C. Add more memory to the ESXi host.
- D. Increase the amount of memory allocated to the virtual machine.

**ANSWER: B C**

**QUESTION NO: 3**

You are adding an NFS volume to an ESXi host.

Which three steps are required? (Choose three.)

- A. Create a vmkernel interface on the ESXi host.
- B. Create a network label to identify the connection.
- C. Choose the NFS folder name in the format volmountsdatastore1.
- D. Choose Network File System as the storage type.
- E. Assign a VSAN to the vmkernel interface.

**ANSWER: A C D**

**QUESTION NO: 4**

Overnight several virtual machines have triggered alarms for guest memory usage.

What are the proper steps to acknowledge the alarms while investigating the cause?

- A. Locate the relevant alarms and reset them.
- B. Notify your monitoring team to disable all virtual machine monitoring; reboot all affected virtual machines and manually monitor their memory usage for the next 60 minutes.
- C. Place all affected virtual machines into suspend until the alarms clear on their own.
- D. From the Status Bar click the alarm button; select Acknowledge the Alarm.

**ANSWER: D**

**QUESTION NO: 5**

You power on a Vblock System 320 and look at the Maps tab of an ESXi server in vCenter's Hosts And Clusters view and see an ESXi server with a red "x" over it.

What is causing the ESX server problem?

- A. The server has crashed.
- B. The server is an unsuitable candidate for migration.
- C. The data store is out of space.

D. The server is rebooting.

**ANSWER: B**

#### QUESTION NO: 6

During the deployment of a Vblock System 320, the customer stresses the importance of network security and states that they would like to have a VM scan and capture all packets on the virtual switch to which it is connected.

Which security policy should you set?

- A. jumbo frame
- B. MAC address change
- C. promiscuous
- D. port scan

**ANSWER: C**

#### QUESTION NO: 7

The CIO of your organization requests an audit of all user logins to vCenter with the vSphere client.

Which action will allow you to provide this information?

- A. Run the event\_export.sql script in SQL Management Studio on the vCenter database.
- B. Connect the vSphere client to the syslog virtual machine and export events.
- C. Connect the vSphere client to vCenter and export events.
- D. Use the vm-support command on the ESXi host to generate the log bundle.

**ANSWER: C**

#### QUESTION NO: 8

In a Vblock 320 Unified Networking environment, a UCS service profile is unable to locate its boot device.

Which two statements are valid troubleshooting steps? (Choose two.)

- A. Verify that the targets in the SAN boot policy match the zoning and the masking on the array.
- B. Verify that the vHBAs are logging into the SAN fabrics by examining the Fabric Login (FLOGI) database on the Cisco MDS switches.
- C. Verify that PowerPathVE can see all paths to the device.

D. Verify that the vHBAs are logging into the SAN fabrics by examining the Fabric Login (FLOGI) database on the Cisco Nexus 5000 series switches.

**ANSWER: A D**

#### QUESTION NO: 9

A user mentions that they are unable to migrate a virtual machine, but the user is able to power down and power on the virtual machine. The option to migrate is grayed out.

When inspecting the user's roles and permissions, which two settings would cause this problem? (Choose two.)

- A. The user has read-only rights to the virtual machine.
- B. The user is part of a user group that has the privilege to migrate virtual machines.
- C. The user does not have administration privileges.
- D. The user's permissions does not allow the privilege to migrate virtual machines.

**ANSWER: C D**

#### QUESTION NO: 10

The PowerPathVE rpowermt server cannot reach a previously licensed ESXi host.

Which two statements are true? (Choose two.)

- A. Multipathing functionality continues to be available on that host and IO continues to be load-balanced across all available paths.
- B. The multipathing policy is automatically reset to Basic Failover (BF) during the period that communication is not available.
- C. A new PowerPathVE license will need to be applied to the ESXi host after communication is restored.
- D. No changes to the PowerPathVE configuration can be made until connectivity is restored.

**ANSWER: A D**