

DUMPS ARENA

OMG-Certified UML Professional Intermediate Exam

OMG OMG-OCUP-200

Version Demo

Total Demo Questions: 10

Total Premium Questions: 154

Buy Premium PDF

<https://dumpsarena.co>

sales@dumpsarena.co

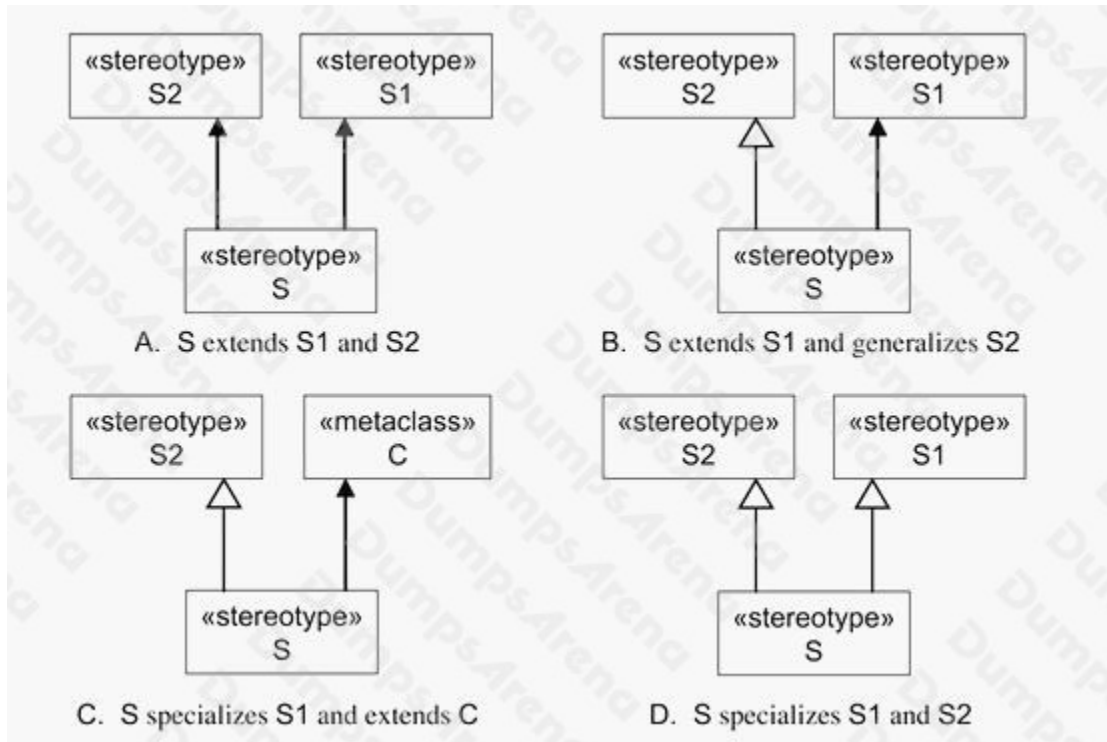
sales@dumpsarena.co
dumpsarena.co

QUESTION NO: 1

CORRECT TEXT

Which is a correct representation of multiple extension and generalization/specialization?

(Choose two)

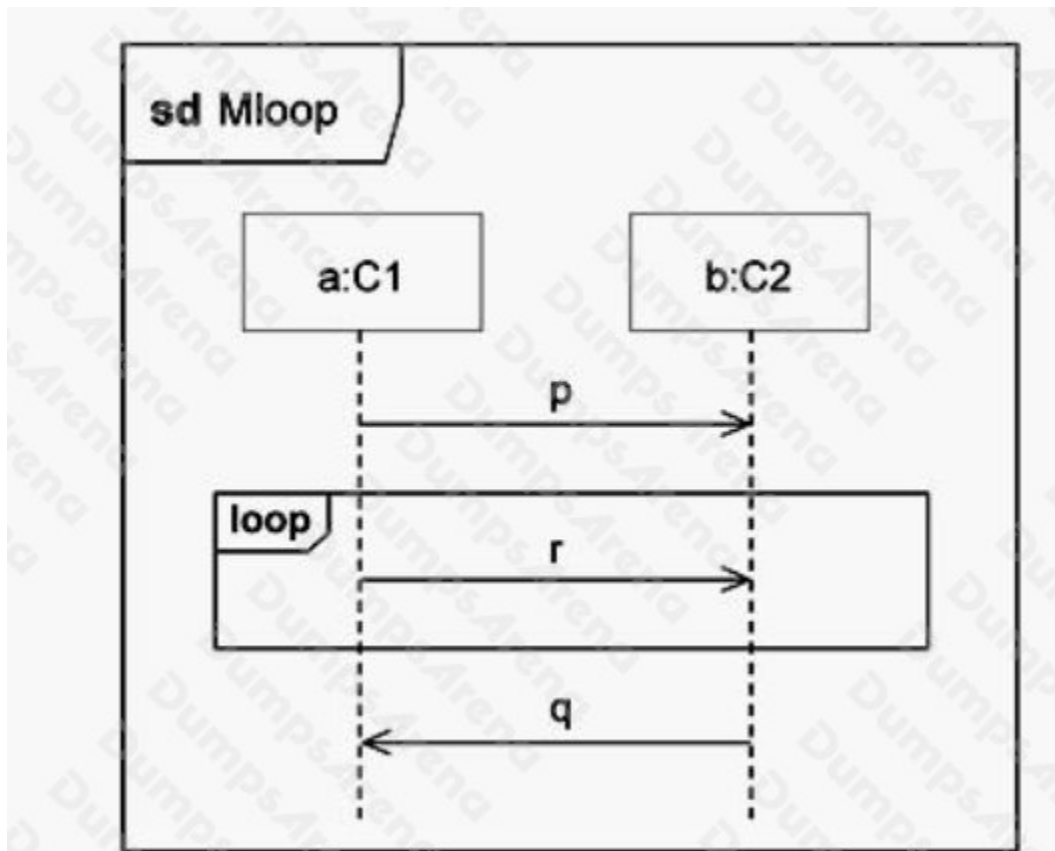


- A. Option A
- B. Option B
- C. Option C
- D. Option D

ANSWER: C D

QUESTION NO: 2

Assume !p denotes sending of p, ?p the reception of p. In the exhibit, what traces are valid? (Choose three)



- A. <!p, !r, ?p, ?r, !r, ?r, !r, ?r, !q, ?q>
- B. <!p, ?p, !q, ?q>
- C. <!p, ?p, !r, !r, ?r, ?r, !q, ?q>
- D. <!p, !r, ?p, ?r, !r, ?r, !r, ?q, !r, ?q>
- E. <!p, ?p, !r, ?r, !r, !q, ?r, ?q>
- F. <!p, !r, ?p, ?r, !r, !q, ?r, ?q>

ANSWER: A B C

QUESTION NO: 3

What does a structured node contain? (Choose two)

- A. states
- B. lifelines
- C. classes

- D. messages
- E. nodes
- F. edges

ANSWER: E F

QUESTION NO: 4

What objects receive a signal sent by a BroadcastSignalAction?

- A. all objects that have a reception for the signal
- B. all objects
- C. objects that are on the same node as the actions
- D. objects that are instantiated from classes in the package of the action
- E. objects are determined by semantic variation

ANSWER: E

QUESTION NO: 5

What interface restrictions does a port have?

- A. equal numbers of provided interfaces and required interfaces
- B. exactly one provided interface or exactly one required interface
- C. multiple required interfaces or multiple provided interfaces
- D. multiple provided interfaces and multiple required interfaces
- E. exactly one required interface and exactly one provided interface

ANSWER: D

QUESTION NO: 6

Which statements apply to arguments of interaction occurrences? (Choose two)

- A. The arguments may refer to parameters of the enclosing interaction.
- B. Arguments to interaction occurrences only apply when the corresponding interaction is value returning.
- C. Arguments to interaction occurrences must always correspond to IN-parameters.
- D. An argument of an interaction occurrence must only have simple types.
- E. The arguments may be constants (literals).

ANSWER: A E

QUESTION NO: 7

What situation results from performing a CreateObjectAction on an abstract class?

- A. arbitrary object of one of its subclasses being created
- B. undefined behavior
- C. object of the specified class being created
- D. error log entry being created
- E. exception being raised

ANSWER: B

QUESTION NO: 8

If a central buffer has one value and three outgoing arrows go to three actions, how many of the actions will receive the value?

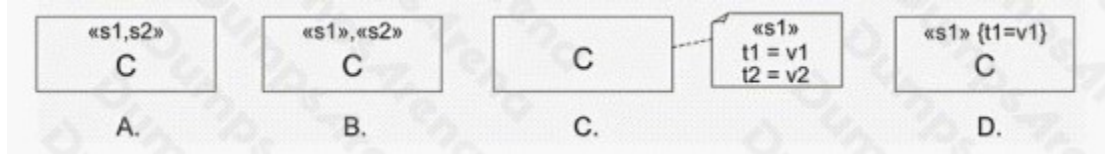
- A. any number
- B. none
- C. one
- D. two

ANSWER: C

QUESTION NO: 9

CORRECT TEXT

What stereotype notation is NOT correct?



- A. Option A
- B. Option B
- C. Option C
- D. Option D

ANSWER: D

QUESTION NO: 10

What does an activity partition contain? (Choose two)

- A. lifelines B. states
- B. classes
- C. edges
- D. nodes
- E. messages

ANSWER: C D