

DUMPS ARENA

Designing Business Intelligence Solutions with Microsoft SQL Server 2012

Microsoft 70-467

Version Demo

Total Demo Questions: 10

Total Premium Questions: 176

Buy Premium PDF

<https://dumpsarena.co>

sales@dumpsarena.co

sales@dumpsarena.co
dumpsarena.co

Topic Break Down

Topic	No. of Questions
Topic 1, Case Study 1	13
Topic 2, Case Study 2	13
Topic 3, Case Study 3	14
Topic 4, Case Study 4	12
Topic 5, Case Study 5	12
Topic 6, Case Study 6	10
Topic 7, Mixed Questions	102
Total	176

QUESTION NO: 1

You need to perform the pre-upgrade database backup operation by using SQL Server Management Studio (SSMS).

How should you configure the backup options?

- A. Select the Apply compression check box. Select the Encrypt backup file check box and supply a password.
- B. Clear the Apply compression check box. Select the Encrypt backup file check box and supply a password.
- C. Clear the Apply compression check box. Clear the Encrypt backup file check box.
- D. Select the Apply compression check box. Clear the Encrypt backup file check box.

ANSWER: D

QUESTION NO: 2 - (DRAG DROP)

DRAG DROP

You are designing a SQL Server Integration Services (SSIS) package to execute 12 Transact-SQL (T-SQL) statements on a SQL Azure database.

The T-SQL statements may be executed in any order. The T-SQL statements have unpredictable execution times.

You have the following requirements:

The package must maximize parallel processing of the T-SQL statements.

After all the T-SQL statements have completed, a Send Mail task must notify administrators.

You need to design the SSIS package.

Which three actions should you perform in sequence? (To answer, move the appropriate actions from the list of actions to the answer area and arrange them in the correct order.)

Select and Place:

This screenshot shows a list of tasks in an SSIS package. The tasks are:

- Execute SQL Task (12)
- Send Mail Task (1)
- Sequence Container (1)
- Execute SQL Task (12)
- Send Mail Task (1)
- Execute SQL Task (12)
- Send Mail Task (1)
- Execute SQL Task (12)
- Send Mail Task (1)

 The instructions on the right side of the screenshot are:

- Add a Send Mail task to the control flow. Add a precedence constraint for Completion to the final Execute SQL task and link it to the Send Mail task.
- Add a Sequence container to the control flow.
- Add a Send Mail task to the control flow. Add a precedence constraint for Completion to the Sequence container and link it to the Send Mail task.
- Create precedence constraints for Completion between all the Execute SQL tasks.
- Add 12 Execute SQL tasks to the control flow and configure the tasks.
- Add 12 Execute SQL tasks to the Sequence container and configure the tasks.

ANSWER:

This screenshot shows the same SSIS package tasks, but with a different configuration. The tasks are:

- Execute SQL Task (12)
- Send Mail Task (1)
- Sequence Container (1)
- Execute SQL Task (12)
- Send Mail Task (1)
- Execute SQL Task (12)
- Send Mail Task (1)
- Execute SQL Task (12)
- Send Mail Task (1)

 The instructions on the right side of the screenshot are:

- Add a Sequence container to the control flow.
- Add 12 Execute SQL tasks to the Sequence container and configure the tasks.
- Add a Send Mail task to the control flow. Add a precedence constraint for Completion to the Sequence container and link it to the Send Mail task.

Explanation:

Note:

The Sequence container defines a control flow that is a subset of the package control flow. Sequence containers group the package into multiple separate control flows, each containing one or more tasks and containers that run within the overall package control flow.

Reference: Sequence Container

QUESTION NO: 3 - (HOTSPOT)

HOTSPOT

A company maintains separate environments for test, production, and quality assurance. The company uses the project deployment model for SQL Server Integration Services (SSIS) deployments.

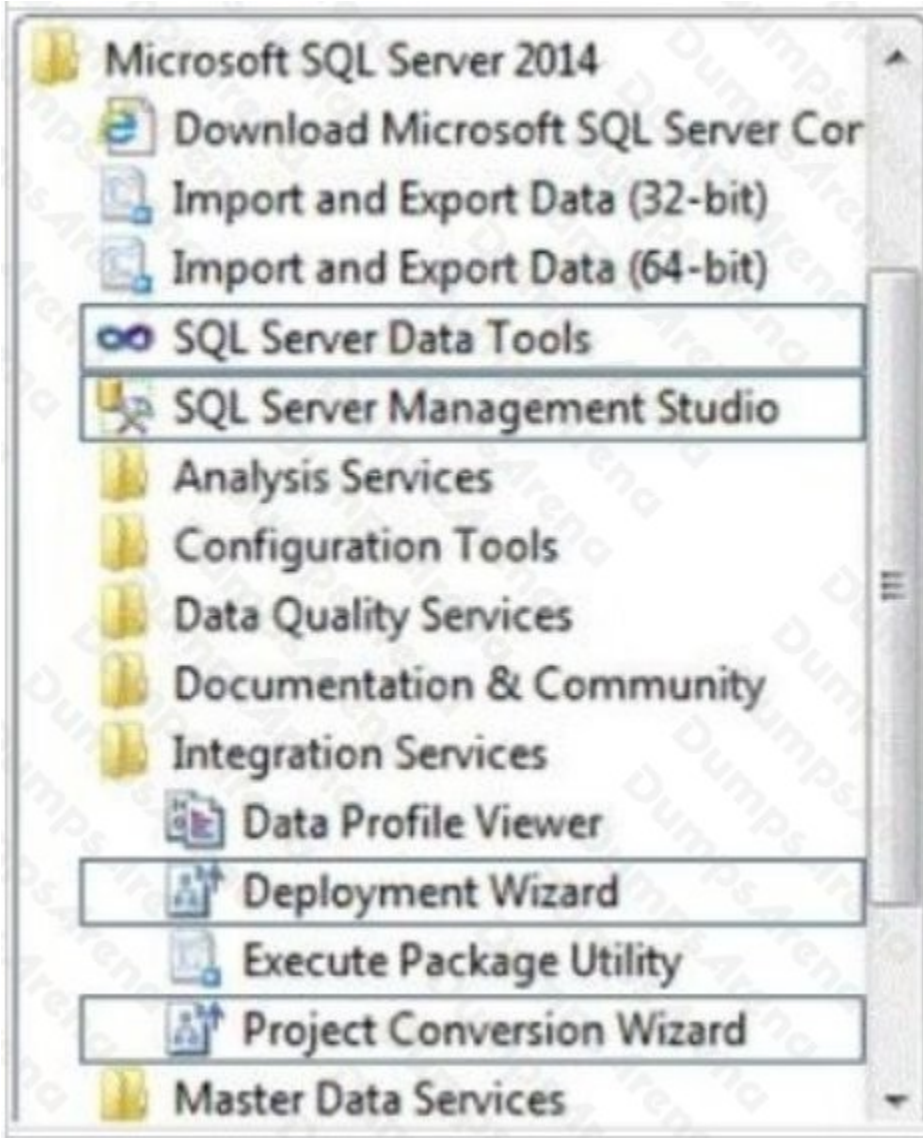
You create an SSIS project to perform a weekly refresh of the company's data warehouse and cubes. The project has three packages.

You need to configure the project to ensure so that the test and production teams can run each package without manually adding server-specific information.

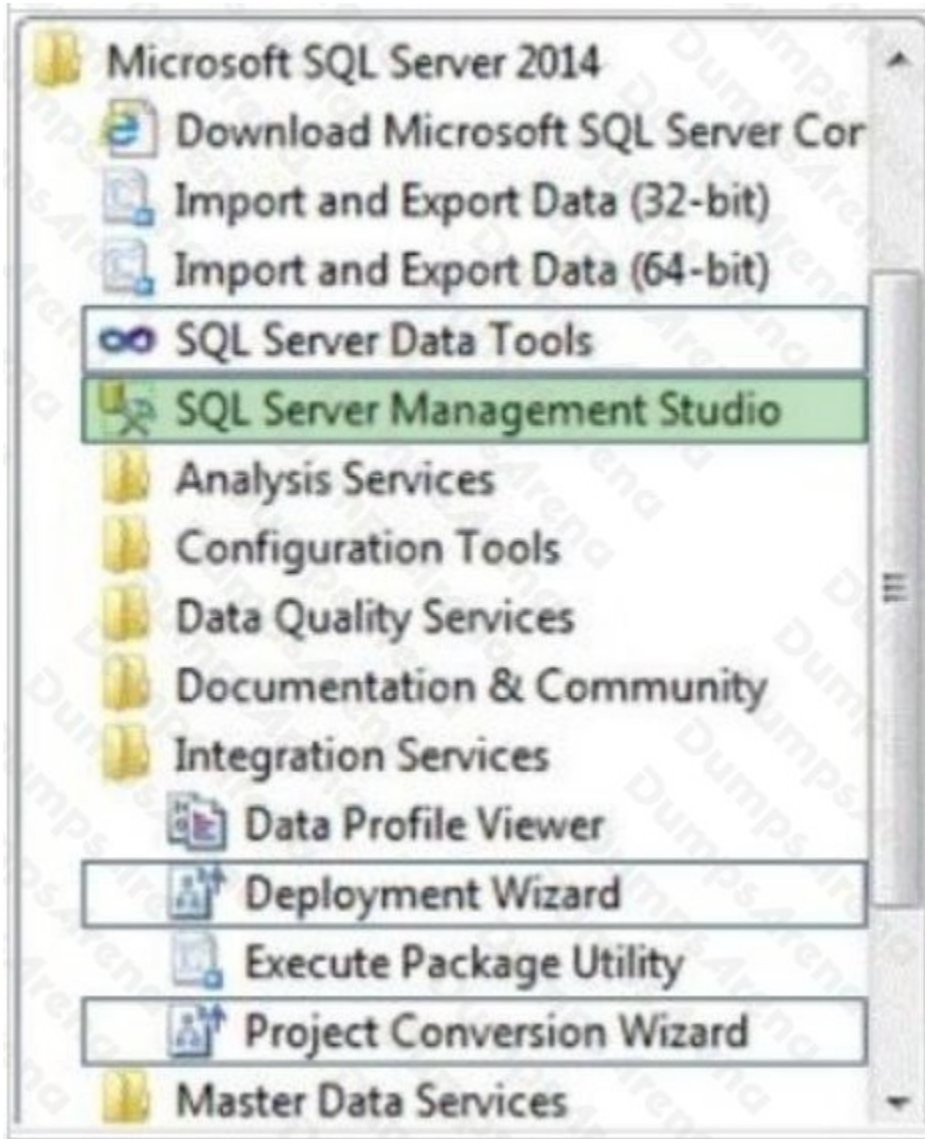
Which program should you use?

To answer, select the appropriate program in the answer area.

Hot Area:



ANSWER:



Explanation:

QUESTION NO: 4

You need to design the recovery strategy for SSRS01.

What should the strategy include? (Each correct answer presents part of the solution. Choose all that apply.)

- A. Re-create the SQL Server Agent jobs that are used to trigger schedules.
- B. Restore the ReportServer and ReportServerTempDB databases with recovery.
- C. Restore the ReportServer and ReportServerTempDB databases with no recovery.
- D. Restore the msdb database.
- E. Restore the Report Server encryption key.

F. Restore the database encryption key.

ANSWER: A B E

Explanation:

Data Architect

QUESTION NO: 5

You need to ensure that the Sales measure in the Power View field list meets the requirements. What should you do? (Each correct answer presents a part of the solution. Choose all that apply.)

- A. Format the column to display zero decimal places.
- B. Hide the column from client tools.
- C. Create a measure named Sales based on the column by using the Data Analysis Expressions (DAX) SUM() function.
- D. Rename the column to Sales.
- E. Format the measure to display zero decimal places.

ANSWER: A C

Explanation:

* Data Analysis Expressions (DAX) provides many functions for creating aggregations such as sums, counts, and averages. These functions are very similar to aggregation functions used by Microsoft Excel.

* SUMX Function

Returns the sum of an expression evaluated for each row in a table.

QUESTION NO: 6 - (DRAG DROP)

DRAG DROP

You have a business intelligence (BI) solution that uses SQL Server Integration Services (SSIS). The BI solution includes an extract transformation, and load (ETL) system.

You are designing a logging and auditing strategy for the ETL system.

You need to ensure that an ETL administrator can view the row counts of any data flow path for each package execution.

Which three actions should you perform in sequence? To answer, move the appropriate actions from the list of actions to the answer area and arrange them in the correct order.

Select and Place:

Actions	Answer Area
Execute the package and use the Verbose logging level.	
Create a SQL Server Reporting Services (SSRS) report that queries the catalog.execution_data_statistics view.	
Create a SQL Server Reporting Services (SSRS) report that queries the catalog.execution_component_phases view.	
Execute the package and use the Performance logging level.	
Configure the Project Deployment Model for the SSIS project.	
From SQL Server Management Studio, view the Execution Performance report.	
Configure the Package Deployment Model for the SSIS project.	

ANSWER:

Actions	Answer Area
	Configure the Package Deployment Model for the SSIS project.
Create a SQL Server Reporting Services (SSRS) report that queries the catalog.execution_component_phases view.	Execute the package and use the Verbose logging level.
Execute the package and use the Performance logging level.	Create a SQL Server Reporting Services (SSRS) report that queries the catalog.execution_data_statistics view.
Configure the Project Deployment Model for the SSIS project.	
From SQL Server Management Studio, view the Execution Performance report.	

Explanation:

QUESTION NO: 7

You need to create the calculation for SalespersonName.

What should you do? (Each correct answer presents a complete solution. Choose all that apply.)

- A.** Create a computed column in the data warehouse's DimSalesperson table. Include the column in the Sales Reporting model's Salesperson table.
- B.** Modify the data warehouse's DimSalesperson table and add a new column. Use an UPDATE statement to populate the new column with values. Update the SSIS package developed to populate the data warehouse's DimSalesperson table to use a Derived Column transformation to produce the calculation.
- C.** Configure the Sales Reporting model's Salesperson table properties to be based on a query. Define a derived column in the query.
- D.** Add a calculated column to the Sales Reporting model's Salesperson table by using the Data Analysis Expressions (DAX) language CONCATENATE function.
- E.** Create a view in the data warehouse that defines a derived column based on the DimSalesperson table. Base the Sales Reporting model's Salesperson table on the view. Include the column in the Sales Reporting model's Salesperson table.
- F.** Add a calculated column to the Sales Reporting model's Salesperson table by using the Data Analysis Expressions (DAX) language ADDCOLUMNS function.

ANSWER: B E

QUESTION NO: 8 - (HOTSPOT)

HOTSPOT You administer a SQL Server Analysis Services (SSAS) cube.

You plan to optimize the cube partitions by using usage-based optimization.

You need to configure the SSAS instance.

Which properties should you configure? To answer, select the appropriate properties in the dialog box in the answer area.

Hot Area:

Name	Value	Current Value
ForceCommit Timeout	30000	30000
Log \ FlightRecorder \ Enabled	true	true
Log \ QueryLog \ CreateQueryLogTable	false	false
Log \ QueryLog \ QueryLogConnectionString		
Log \ QueryLog \ QueryLogSampling	10	10
Log \ QueryLog \ QueryLogTableName	OlapQueryLog	OlapQueryLog
LogDir	C:\Program File...	C:\Program File...
Memory \ HardMemoryLimit	0	0
Memory \ LowMemoryLimit	65	65
Memory \ TotalMemoryLimit	80	80
Memory \ VertiPaqMemoryLimit	60	60
Network \ ListenOnlyOnLocalConnections	false	false
Network \ Requests \ EnableBinaryXML	false	false
Network \ Requests \ EnableCompression	false	false

Show Advanced (All) Properties

ANSWER:

Name	Value	Current Value
ForceCommit Timeout	30000	30000
Log \ FlightRecorder \ Enabled	true	true
Log \ QueryLog \ CreateQueryLogTable	false	false
Log \ QueryLog \ QueryLogConnectionString		
Log \ QueryLog \ QueryLogSampling	10	10
Log \ QueryLog \ QueryLogTableName	OlapQueryLog	OlapQueryLog
LogDir	C:\Program File...	C:\Program File...
Memory \ HardMemoryLimit	0	0
Memory \ LowMemoryLimit	65	65
Memory \ TotalMemoryLimit	80	80
Memory \ VertiPaqMemoryLimit	60	60
Network \ ListenOnlyOnLocalConnections	false	false
Network \ Requests \ EnableBinaryXML	false	false
Network \ Requests \ EnableCompression	false	false

Show Advanced (All) Properties

Explanation:

QUESTION NO: 9

You need to define the trend calculation for the sales performance KPI.

Which KPI trend MDX expression should you use?

A. CASE

```
WHEN [Sales Variance %] < ([Sales Variance %], [Date].[Calendar].PrevMember) THEN -1 WHEN [Sales Variance %] =
([Sales Variance %], [Date].[Calendar].PrevMember) THEN 0 ELSE 1
END
```

B. IIF([Sales Variance %3 < ([Sales Variance %], [Date].[Calendar].PrevMember), 1, 0)

C. IIF([Sales Variance %] < ([Sales Variance %], [Date].[Calendar].PrevMember), 0, 1)

D. CASE

```
WHEN [Sales Variance %] < ([Sales Variance %], [Date].[Calendar].PrevMember) THEN 1 WHEN [Sales Variance %] =
([Sales Variance %], [Date].[Calendar].PrevMember) THEN 0 ELSE -1
```

END

ANSWER: A

QUESTION NO: 10

You need to create the Sales Reporting shared SSRS data source.

Which SSRS data connection type should you use?

- A.** OData
- B.** Microsoft SQL Server
- C.** ODBC
- D.** OLE DB

ANSWER: B