

DUMPS ARENA

Implementing a Data Warehouse with Microsoft SQL Server 2012

Microsoft 70-463

Version Demo

Total Demo Questions: 15

Total Premium Questions: 242

Buy Premium PDF

<https://dumpsarena.co>

sales@dumpsarena.co

sales@dumpsarena.co
dumpsarena.co

Topic Break Down

Topic	No. of Questions
Topic 1, Volume A	65
Topic 2, Volume B	57
Topic 3, Volume C	120
Total	242

QUESTION NO: 1 - (DRAG DROP)

DRAG DROP

You are developing a SQL Server Integration Services (SSIS) package that downloads data from a Microsoft Azure SQL Database database.

A stored procedure will be called in an Execute SQL task by using an ODBC connection. This stored procedure has only the @CustomerID parameter of type INT.

A project parameter named CustID will be mapped to the stored procedure parameter @CustomerID.

You need to ensure that the value of the CustID parameter is passed to the @CustomerID stored procedure parameter.

In the Parameter Mapping tab of the Execute SQL task editor, how should you configure the parameter? (To answer, drag the appropriate option or options to the correct location or locations in the answer area.)

Select and Place:

The screenshot shows the Parameter Mapping tab of the Execute SQL task editor. On the left, there is a list of items to drag: @CustomerID, \$Project::CustID, User::CustID, Input, Output, SQL_INTEGER, SQL_SMALLINT, SQL_VARCHAR, 0, and 1. On the right, there are four empty input fields labeled: Variable Name, Direction, Data Type, and Parameter Name.

ANSWER:

@CustomerID	Variable Name:	\$Project::CustID
User::CustID	Direction:	Input
Output	Data Type:	SQL_INTEGER
SQL_SMALLINT	Parameter Name:	1
SQL_VARCHAR		
0		

Explanation:

QUESTION NO: 2

You are the data steward for a Business Intelligence project.

You must identify duplicate rows stored in a SQL Server table and output discoveries to a CSV file. A Data Quality Services (DQS) knowledge base has been created to support this project.

You need to produce the CSV file with the least amount of development effort.

What should you do?

- A. Create an Integration Services package and use a Data Profiling transform.
- B. Create a custom .NET application based on the Knowledgebase class.
- C. Create a data quality project.
- D. Create a CLR stored procedure based on the Knowledgebase class.
- E. Create a Master Data Services (MDS) business rule.

ANSWER: C

Explanation:

References: <http://msdn.microsoft.com/en-us/library/hh213052.aspx>

QUESTION NO: 3

You are deploying a new SQL Server Integration Services (SSIS) package to five servers.

The package must meet the following requirements:

- .NET Common Language Runtime (CLR) integration in SQL Server must not be enabled.
- The Connection Managers used in the package must be configurable without editing and redeploying the package.
- The deployment procedure must be automated as much as possible.
- Performance must be maximized.

You need to set up a deployment strategy that meets the requirements.

What should you do?

- A. Add an OnError event handler to the SSIS project.
- B. Use an msi file to deploy the package on the server.
- C. Open a command prompt and run the gacutil command.
- D. Open a command prompt and run the dtutil /copy command.
- E. Open a command prompt and run the dtexec /rep /conn command.
- F. Open a command prompt and run the dtexec /dumperror /conn command.
- G. Open a command prompt and execute the package by using the SQL Log provider and running the dtexecui.exe utility.
- H. Create a reusable custom logging component and use it in the SSIS project.
- I. Configure the SSIS solution to use the Project Deployment Model.
- J. Configure the output of a component in the package data flow to use a data tap.
- K. Run the dtutil command to deploy the package to the SSIS catalog and store the configuration in SQL Server.

ANSWER: D

QUESTION NO: 4

You need to extract data from a table in a SQL Server database.

What connection manager types can you use? (Choose all that apply.)

- A. An ODBC connection manager
- B. An OLE DB connection manager
- C. A File connection manager
- D. An ADO.NET connection manager

ANSWER: A B D**Explanation:**

References:

[https://technet.microsoft.com/en-us/library/ms141013\(v=sql.110\).aspx](https://technet.microsoft.com/en-us/library/ms141013(v=sql.110).aspx)<https://docs.microsoft.com/en-us/sql/integration-services/data-flow/extract-data-by-using-the-odbc-source>
[https://msdn.microsoft.com/en-us/library/ms254937\(v=vs.100\).aspx](https://msdn.microsoft.com/en-us/library/ms254937(v=vs.100).aspx)**QUESTION NO: 5**

You are developing a SQL Server Integration Services (SSIS) package.

The package uses a data flow task to source data from a SQL Server database for loading into a dimension table in a data warehouse.

You need to create a separate data flow path for data that has been modified since it was last processed.

Which two data flow components should you use to identify modified data? (Each correct answer presents a complete solution. Choose all that apply.)

- A. Multicast
- B. Data Conversion
- C. Lookup
- D. Slowly Changing Dimension
- E. Aggregate

ANSWER: C D**Explanation:**

C: Lookup Transformation

The transformation that looks up values in a reference table using an exact match.

D: Slowly Changing Dimension

The Slowly Changing Dimension transformation provides the following functionality for managing slowly changing dimensions:

- Matching incoming rows with rows in the lookup table to identify new and existing rows.
- Identifying incoming rows that contain changes when changes are not permitted.
- Identifying inferred member records that require updating.
- Identifying incoming rows that contain historical changes that require insertion of new records and the updating of expired records. ▪ Detecting incoming rows that contain changes that require the updating of existing records, including expired ones.

Note:

* SQL Server Integration Services provides three different types of data flow components: sources, transformations, and destinations. Sources extract data from data stores such as tables and views in relational databases, files, and Analysis Services databases. Transformations modify, summarize, and clean data. Destinations load data into data stores or create in-memory datasets.

References:

<https://docs.microsoft.com/en-us/sql/integration-services/data-flow/transformations/lookup-transformation>

<https://docs.microsoft.com/en-us/sql/integration-services/data-flow/transformations/slowly-changing-dimension-transformation>

QUESTION NO: 6

Reporting from a Star schema is simpler than reporting from a normalized online transactional processing (OLTP) schema.

What are the reasons for wanting simpler reporting? (Choose all that apply.)

- A.** A Star schema typically has fewer tables than a normalized schema. Therefore, queries are simpler because they require fewer joins.
- B.** A Star schema has better support for numeric data types than a normalized relational schema; therefore, it is easier to create aggregates.
- C.** There are specific Transact-SQL expressions that deal with Star schemas.
- D.** A Star schema is standardized and narrative; you can find the information you need for a report quickly.

ANSWER: A D

Explanation:

References: <http://www.vertabelo.com/blog/technical-articles/data-warehouse-modeling-star-schema-vs-snowflake-schema>

QUESTION NO: 7 - (HOTSPOT)

HOTSPOT

You are developing a SQL Server Integration Services (SSIS) package. The data source for the data flow task is a table that has been configured as a change data capture (CDC) table. You are using a CDC Source component to obtain the CDC data.

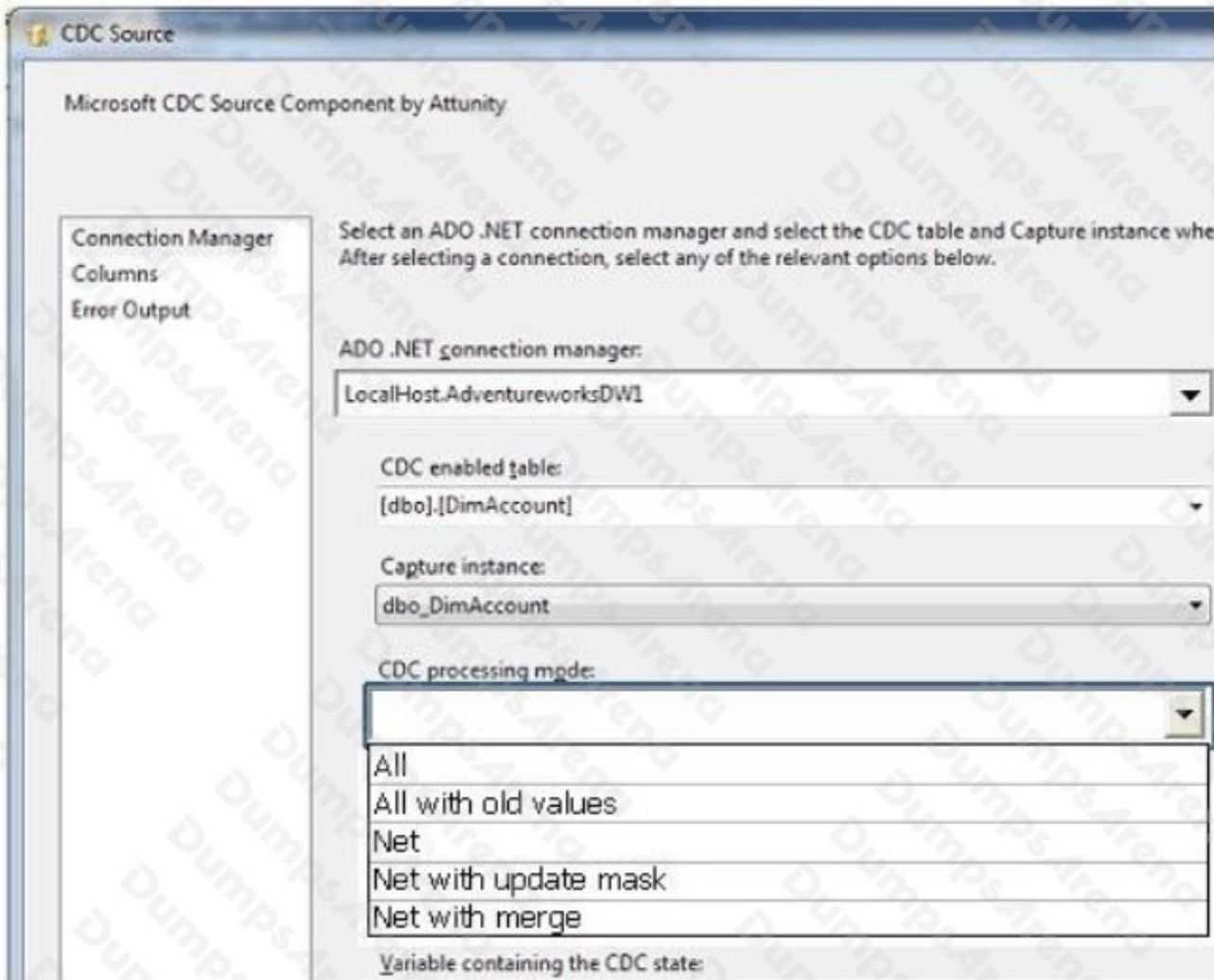
The data source will be polled once per hour. The data is updated with multiple important status changes per minute.

For each captured data change, the before and after values must be included.

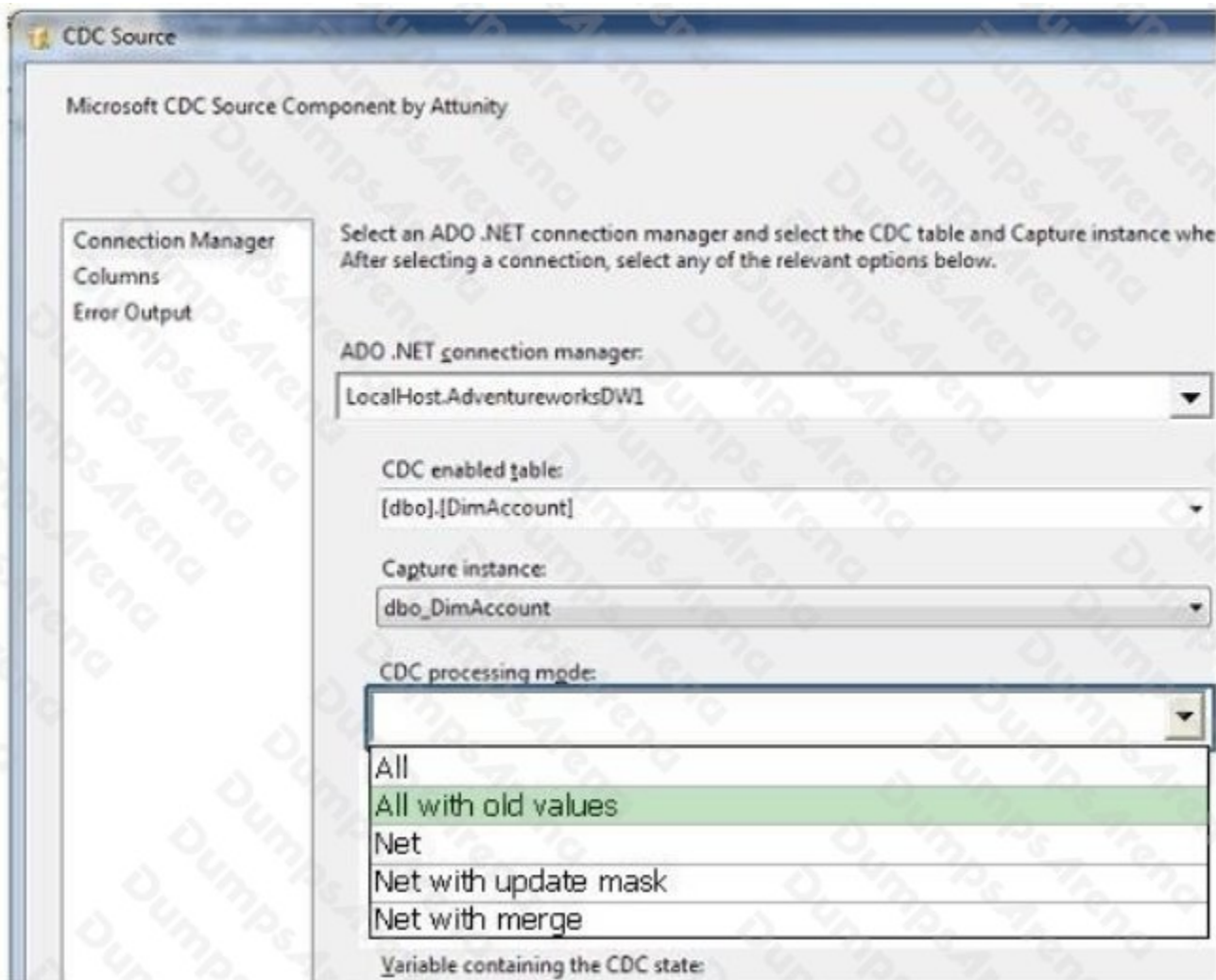
You need to configure the CDC Source component.

Which CDC processing mode should you select? (To answer, configure the appropriate option in the dialog box in the answer area.)

Hot Area:



ANSWER:



Explanation:

QUESTION NO: 8

You are completing the installation of the Data Quality Server component of SQL Server Data Quality Services (DQS). You need to complete the post-installation configuration. What should you do?

- A. Run the DQSInstaller.exe command.
- B. Install the data providers that are used for data refresh.
- C. Install ADOMD.NET.
- D. Run the dbimpexp.exe command.

ANSWER: A

Explanation:

Note: DQS stands for Data Quality Server.

References: <http://msdn.microsoft.com/en-us/library/ff877917.aspx> <http://msdn.microsoft.com/en-us/library/gg492277.aspx>

QUESTION NO: 9 - (HOTSPOT)

HOTSPOT You are developing a SQL Server Integration Services (SSIS) package.

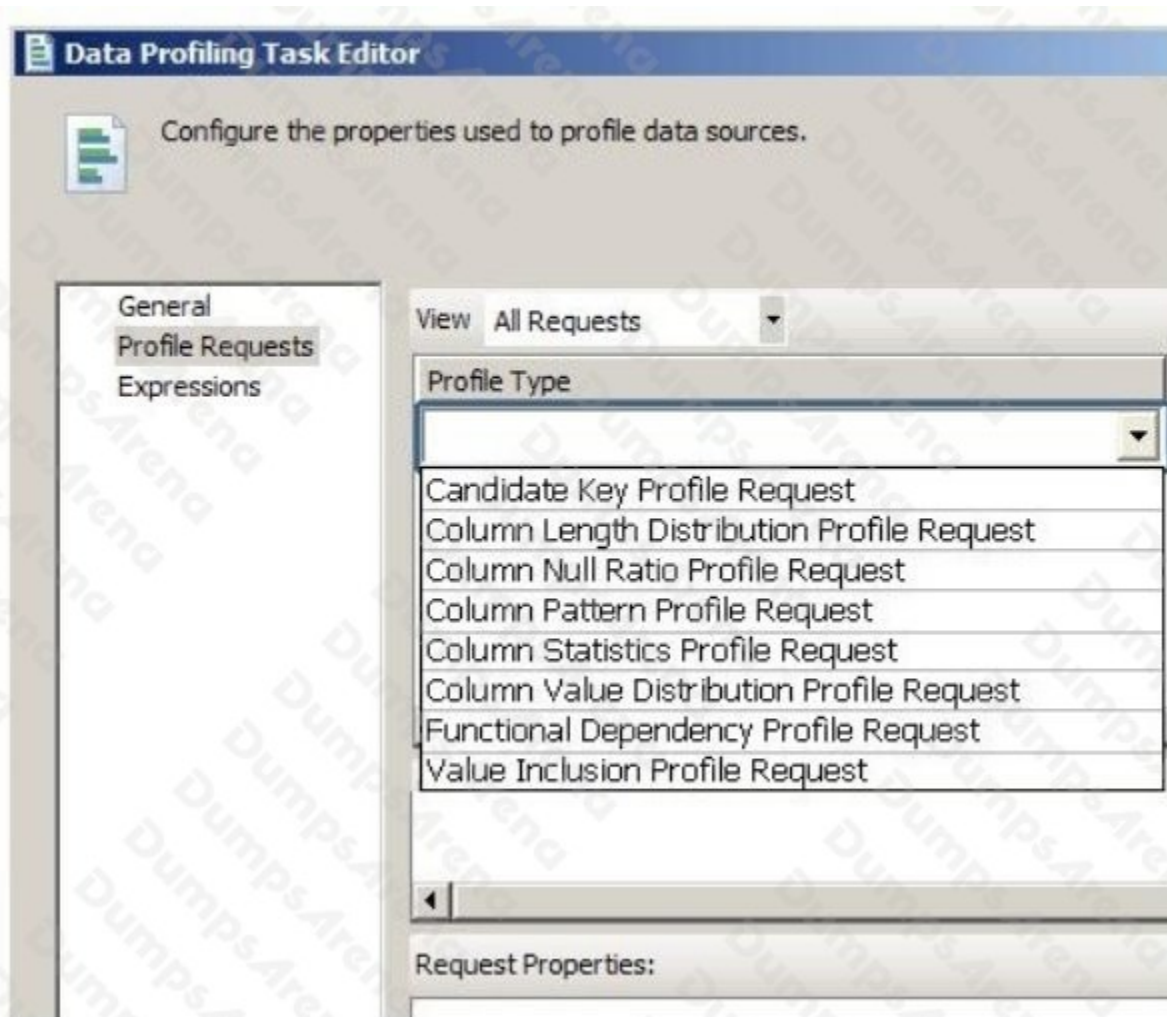
You use a Data Profiling task to examine the data from a source system. You need to establish:

- The minimum and maximum dates for the datetime columns in the source data
- The minimum, maximum, and average values for numeric columns in the source data

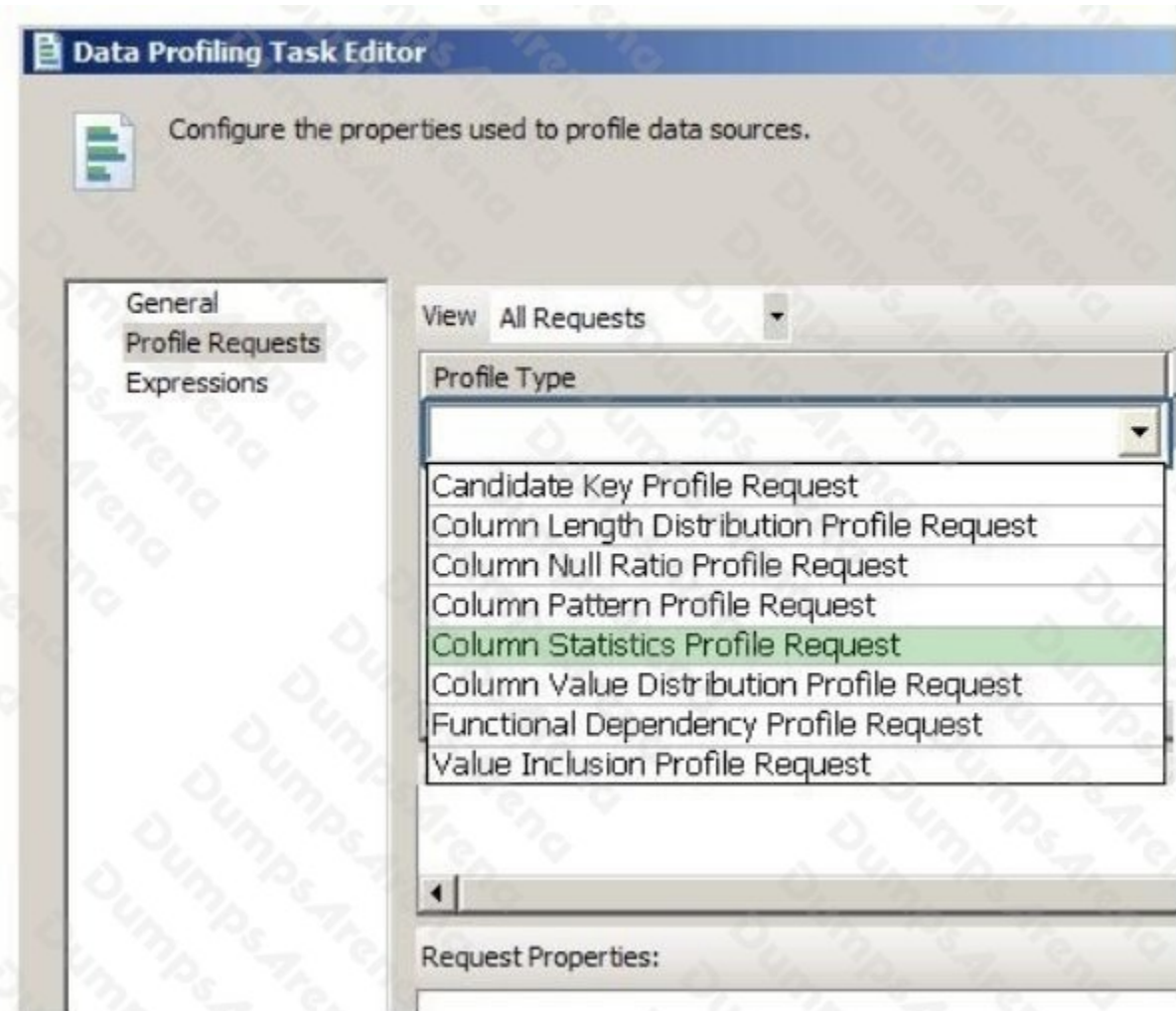
You need to use the appropriate profile type in the Data Profiling task.

Which profile type should you use? (To answer, select the appropriate profile type in the answer area.)

Hot Area:



ANSWER:



Explanation:

QUESTION NO: 10

If you want to switch content from a nonpartitioned table to a partition of a partitioned table, what conditions must the nonpartitioned table meet? (Choose all that apply.)

- A. It must have the same constraints as the partitioned table.
- B. It must have the same compression as the partitioned table.
- C. It must be in a special PartitionedTables schema.
- D. It must have a check constraint on the partitioning column that guarantees that all of the data goes to exactly one partition of the partitioned table.
- E. It must have the same indexes as the partitioned table.

ANSWER: A B D E

Explanation:

References: [https://technet.microsoft.com/en-us/library/ms191160\(v=sql.105\).aspx](https://technet.microsoft.com/en-us/library/ms191160(v=sql.105).aspx)

QUESTION NO: 11

You are developing a SQL Server Integration Services (SSIS) package.

You need to design a package to change a variable value during package execution by using the least amount of development effort.

What should you use?

- A. Term Lookup transformation
- B. Expression task
- C. Data Profiling task
- D. Fuzzy Lookup transformation
- E. Data Cleansing transformation

ANSWER: B**Explanation:**

The Expression Task creates and evaluates expressions that set variable values at runtime, using the Expression Builder. References: <http://msdn.microsoft.com/en-us/library/hh213137.aspx>

QUESTION NO: 12

You are adding a new capability to several dozen SQL Server Integration Services (SSIS) packages.

The new capability is not available as an SSIS task. Each package must be extended with the same new capability. You need to add the new capability to all the packages without copying the code between packages. What should you do?

- A. Use the Expression task.
- B. Use the Script task.
- C. Develop a custom task.
- D. Use the Script component.
- E. Develop a custom component.

ANSWER: C**Explanation:**

References: <http://msdn.microsoft.com/en-us/library/ms135965.aspx> <http://msdn.microsoft.com/en-us/library/ms345161.aspx>

QUESTION NO: 13

You manage a SQL Server Master Data Services (MDS) environment.

A new application requires access to the product data that is available in the MDS repository.

You need to design a solution that gives the application access to the product data with the least amount of development effort.

What should you do?

- A.** Create a Subscription View in MDS.
- B.** Access the product entity tables in the MDS database directly.
- C.** Use SQL Server Integration Services (SSIS) to extract the data and put it in a staging database.
- D.** Use change data capture on the product entity tables.

ANSWER: A**Explanation:**

You create a subscription view to export Master Data Services data to a subscribing system such as SQL Server. You use the subscribing system to view the data in the Master Data Services database.

References: <https://docs.microsoft.com/en-us/sql/master-data-services/overview-exporting-data-master-data-services?view=sql-server-2017>

QUESTION NO: 14 - (DRAG DROP)**DRAG DROP**

You have a SQL Server Integration Services (SSIS) package that runs on a server named SQL1 and connects to a SQL Server database on a server named SQL2.

You schedule the package to run via a SQL Server Agent job.

The package fails and generates the following error message: "Unknown server or Access is Denied".

You discover that the package is configured to authenticate by using Windows authentication and that the SQL Server Agent on SQL1 uses NT Service\SQLSERVERAGENT as a service account.

You verify that other jobs run on the server without errors.

You create a user account named CONTOSO\JobProcess1 and provide all of the required access to the tables on SQL2.

You need to ensure that the package runs successfully via the SQL Server Agent job.

Which three actions should you perform in sequence? To answer, move the appropriate actions from the list of actions to the answer area and arrange them in the correct order.

Select and Place:

Actions

- Create a proxy account that uses CONTOSO\JobProcess1.
- Configure the SQL Server Agent service to use CONTOSO\JobProcess1 as a service account.
- Modify the SQL Server Agent job step to use CONTOSO\JobProcess1.
- Create a Windows authentication login named CONTOSO\JobProcess1.
- Create a credential that uses CONTOSO\JobProcess1.

Answer Area



ANSWER:

Actions

-
- Configure the SQL Server Agent service to use CONTOSO\JobProcess1 as a service account.
-
- Create a Windows authentication login named CONTOSO\JobProcess1.
-

Answer Area

Create a credential that uses CONTOSO\JobProcess1.



Create a proxy account that uses CONTOSO\JobProcess1.

Modify the SQL Server Agent job step to use CONTOSO\JobProcess1.



Explanation:

Step 1: Create a credential that uses CONTOSO \JobProcess1

You must create a credential before you create a proxy if one is not already available.

Step 2: Create a proxy account.

Step 3: Modify the SQL Server Agent job step to use.

To automate package execution by using SQL Server Agent ...

To create a job, step for the package you want to schedule, click Steps, and then click New.

Select Integration Services Package for the job step type.

In the Run as list, select SQL Server Agent Service Account or select a proxy account that has the credentials that the job step will use.

Using a proxy account instead of the SQL Server Agent Service Account may resolve common issues that can occur when executing a package using the SQL Server Agent.

References:

<https://docs.microsoft.com/en-us/sql/integration-services/packages/sql-server-agent-jobs-for-packages>

<https://docs.microsoft.com/en-us/sql/ssms/agent/create-a-sql-server-agent-proxy>

QUESTION NO: 15

You have a SQL Server Integration Services (SSIS) package named Package1.

You discover that the Data Flow task for Package1 runs slower than expected.

You need to reduce the amount of time required to run the Data Flow task.

Which two actions should you perform? Each correct answer presents part of the solution.

- A. Modify the DefaultBufferMaxRows package setting.
- B. Configure the package to run by using the CallerInfooption.
- C. Modify the ForceExecutionResult package setting.
- D. Configure the package to run by using the MaxConcurrent option.
- E. Modify the DefaultBufferSize package setting.

ANSWER: A E

Explanation:

References: [https://msdn.microsoft.com/en-us/library/ms141031\(v=sql.110\).aspx](https://msdn.microsoft.com/en-us/library/ms141031(v=sql.110).aspx)