

DUMPS ARENA

Administering Microsoft SQL Server 2012/2014 Databases

Microsoft 70-462

Version Demo

Total Demo Questions: 15

Total Premium Questions: 319

Buy Premium PDF

<https://dumpsarena.co>

sales@dumpsarena.co

sales@dumpsarena.co
dumpsarena.co

Topic Break Down

Topic	No. of Questions
Topic 1, Volume A	49
Topic 2, Volume B	270
Total	319

QUESTION NO: 1

You administer a database that has User A, B and C.

User A must be able to create new tables and stored procedures, User B must be able to select, update, delete and insert data.

User C must be able to provide windows logins to the database.

To which role or roles should you add the users?

- A. db_accessadmin
- B. db_ddladmin
- C. db_datawriter
- D. db_datareader
- E. db_owner

ANSWER: A B C D**QUESTION NO: 2**

You are planning to install a Microsoft SQL Server Database Engine instance. The instance will be used to support a high-volume OLTP database application.

The server has the following logical disk configuration. Drive C is used as the system drive:

- Drive C: RAID 1
- Drive D: RAID 10 ▪ Drive E: RAID 5

You need to ensure that the default data folders for the Database Engine are configured for optimal performance.

Which three actions should you perform? Each correct answer presents part of the solution.

- A. Place the User database log files on Drive D.
- B. Place the TempDB data files and TempDB log files on Drive D.
- C. Place the User database data files on Drive E.
- D. Place the TempDB data files on Drive C.
- E. Place the User Database log files on Drive C.
- F. Place the TempDB log files on Drive E.

ANSWER: A B C**Explanation:**

B: For best performance, place the tempdb on a RAID 10 array.

AC: Ideally, you should place the tempdb database, content databases, Usage database, search databases, and transaction logs on separate physical hard disks.

Note: When you prioritize data among faster disks, use the following ranking:

Tempdb data files and transaction logs

Database transaction log files

Search databases, except for the Search administration database

Database data files

In a heavily read-orient

References: <https://docs.microsoft.com/en-us/sharepoint/administration/storage-and-sql-server-capacity-planning-and-configuration>

QUESTION NO: 3

You need to install SQL Server on a server. The server must meet the following requirements:

- Include SQL Server Integration Services (SSIS)
- Be able to run 32-bit SSIS legacy packages

You add the Integration Services shared feature to the installation.

Which other shared feature should you add to the installation?

- A. Client Tools Connectivity
- B. Master Data Services (MDS)
- C. Management Tools - Complete
- D. SQL Server Data Tools

ANSWER: D**Explanation:**

SQL Server Data Tools (SSDT) provides project templates and design surfaces for building SQL Server content types — relational databases, Analysis Services models, Reporting Services reports, and Integration Services packages.

SSDT is backwards compatible, so you can always use the newest SSDT to design and deploy databases, models, reports, and packages that run on older versions of SQL Server.

References: <https://docs.microsoft.com/en-us/sql/ssdt/previous-releases-of-sql-server-data-tools-ssdt-and-ssdt-bi?view=sql-server-2017>

QUESTION NO: 4

You administer a Microsoft SQL Server 2012 instance.

The instance contains a database that supports a retail sales application. The application generates hundreds of transactions per second and is online 24 hours per day and 7 days per week.

You plan to define a backup strategy for the database. You need to ensure that the following requirements are met:

- No more than 5 minutes worth of transactions are lost.
- Data can be recovered by using the minimum amount of administrative effort.

What should you do? Choose three.

- A.** Configure the database to use the SIMPLE recovery model.
- B.** Create a DIFFERENTIAL database backup every 4 hours.
- C.** Create a LOG backup every 5 minutes.
- D.** Configure the database to use the FULL recovery model.
- E.** Create a FULL database backup every 24 hours.
- F.** Create a DIFFERENTIAL database backup every 24 hours.

ANSWER: C D E**Explanation:**

If there were four correct answers, then option B, Create a DIFFERENTIAL database backup every 4 hours, would be the fourth correct alternative.

QUESTION NO: 5 - (HOTSPOT)

HOTSPOT You administer a Microsoft SQL Server database.

The database is in the Simple recovery mode.

You schedule the following backup plan:

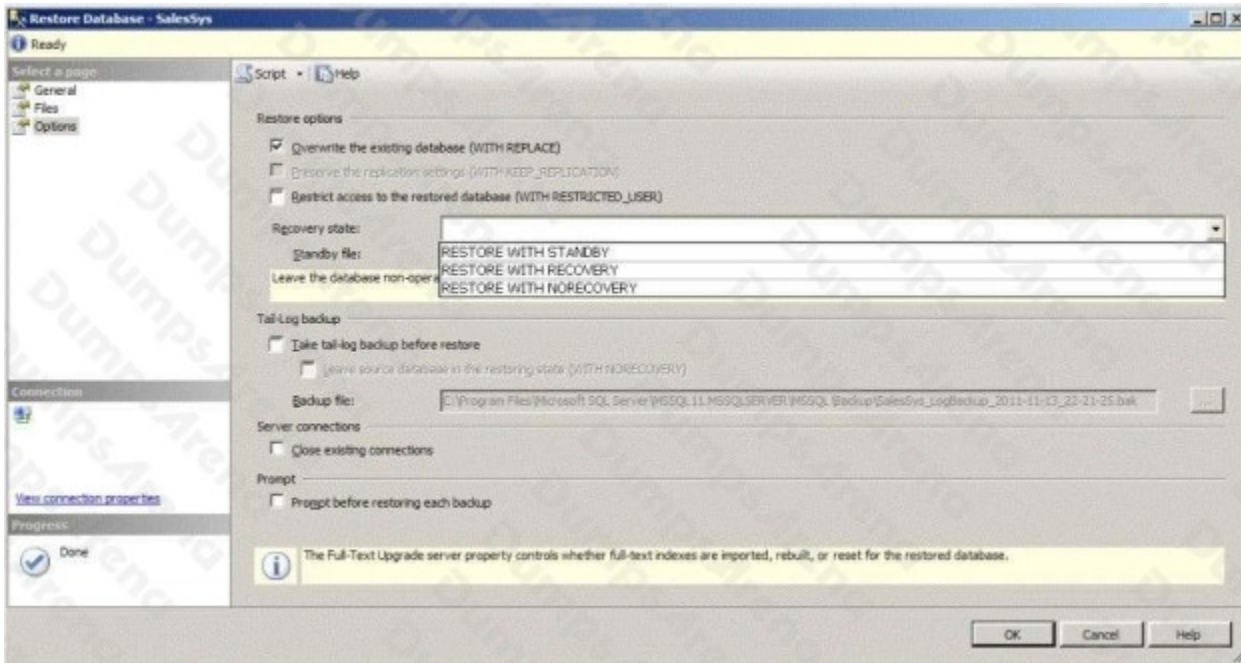
- Full backup every day at midnight
- Differential backups every hour on the hour, except at midnight

The database fails at 20:45 hours.

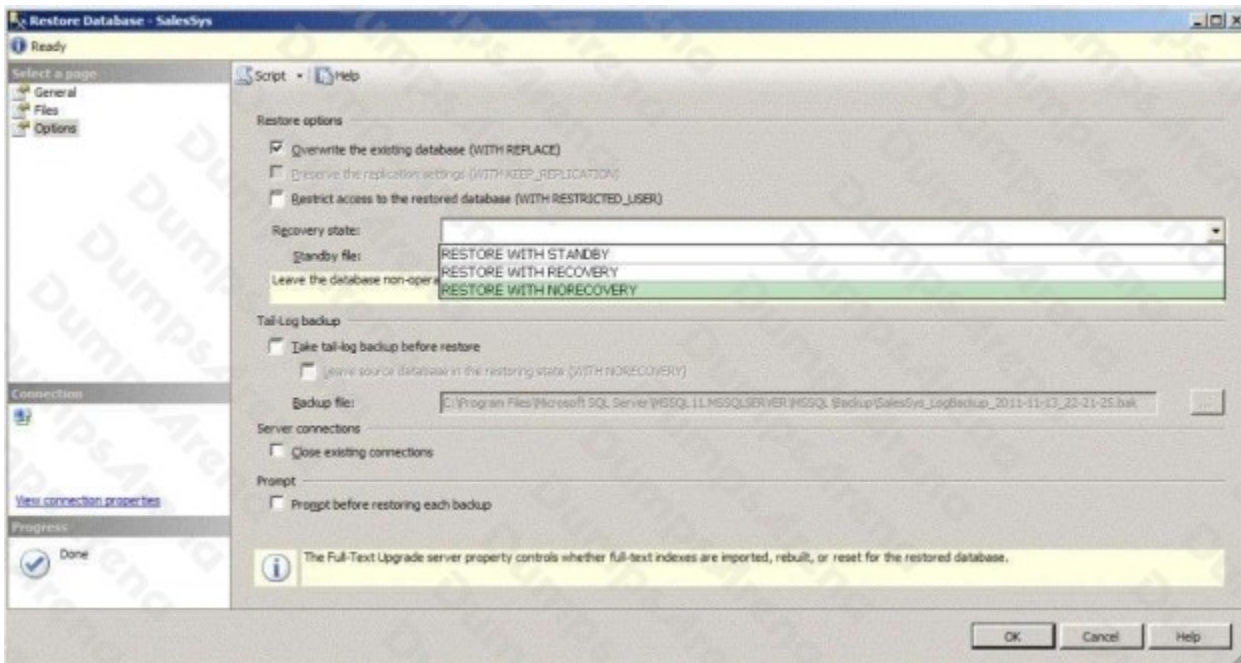
You need to use SQL Server Management Studio (SSMS) to begin restoring the database with a minimum amount of data loss.

Which options should you select on the Options page of the Restore Database window? (To answer, configure the appropriate option or options in the dialog box in the answer area.)

Hot Area:



ANSWER:



Explanation:

First, restore full database backup, differential database backup and all transaction log backups WITH NORECOVERY Option. After that, bring back database online using WITH RECOVERY option.

References: <https://blog.sqlauthority.com/2009/07/15/sql-server-restore-sequence-and-understanding-norecovery-and-recovery/>

QUESTION NO: 6 - (DRAG DROP)

DRAG DROP

You administer a Microsoft SQL Server database. Service accounts for SQL Agent are configured to use a local user.

A Microsoft SQL Server Integration Services (SSIS) job step has been created within a SQL Server Agent job.

The SSIS package accesses a network share when exporting data from a SQL Server database.

When you execute the SQL Server Agent job, it fails due to a permissions failure on a share on a remote server.

You need to ensure that the SQL Server Agent job can execute the SSIS package.

Which four actions should you perform in sequence? (To answer, move the appropriate actions from the list of actions to the answer area and arrange them in the correct order.)

Select and Place:

Actions	Answer Area
Add a proxy that references the local user.	
Assign the proxy to the SSIS package execution subsystem.	
Create a credential that references the domain user.	
Create a local user account and grant local administrator on the SQL Server instance.	
Create a credential that references the local user.	
Add a proxy that references the credential.	
Create a domain user account and grant permissions to the domain user account to access the network share.	
Assign the proxy to the Operating System subsystem.	

Navigation icons: Left arrow, Right arrow, Up arrow, Down arrow.

ANSWER:

Actions	Answer Area
Add a proxy that references the local user.	Create a domain user account and grant permissions to the domain user account to access the network share.
	Create a credential that references the domain user.
	Add a proxy that references the credential.
Create a local user account and grant local administrator on the SQL Server instance.	Assign the proxy to the SSIS package execution subsystem.
Create a credential that references the local user.	
Assign the proxy to the Operating System subsystem.	

Explanation:

Box 1: Create a domain user account and grant permissions to the domain user account to access the network share To access the network share we need a domain user account, not a local user account.

Box 2: Create a credential that references the domain user

Box 3: Add a proxy that references the credential

Box 4: Assign the proxy to the SSIS package execution subsystem

SQL Server Agent allows creating a proxy account which defines the security context for the job step.

We need to do is to create a credential to be used by the proxy account.

The created proxy need to have access to the SSIS subsystem

Reference: <https://www.mssqltips.com/sqlservertip/2163/running-a-ssis-package-from-sql-server-agent-using-a-proxy-account/>

QUESTION NO: 7

You administer a Microsoft SQL Server instance.

The instance contains a database that supports a retail sales application. The application generates hundreds of transactions per second and is online 24 hours per day and 7 days per week. The database is configured to use the FULL recovery model.

You plan to define a backup strategy for the database. You need to ensure that the following requirements are met:

- No more than 5 minutes worth of transactions are lost.
- Data can be recovered by using the minimum amount of administrative effort.

What should you do? Each correct answer presents part of the solution.

- A.** Create a LOG backup every 5 minutes.
- B.** Configure the database to use the SIMPLE recovery model.
- C.** Create a DIFFERENTIAL database backup every 4 hours.
- D.** Create a DIFFERENTIAL database backup every 24 hours.
- E.** Create a FULL database backup every 24 hours.

ANSWER: A E

QUESTION NO: 8

You are the senior database administrator for a Microsoft SQL Server environment that uses Microsoft Azure SQL Database.

You need to grant a junior database administrator only the permissions required to create new logins.

Which Microsoft Azure SQL Database role should you assign the junior database administrator?

- A.** setupadmin
- B.** loginmanager
- C.** securityadmin
- D.** serveradmin

ANSWER: B

Explanation:

Members of the login manager role can create new logins in the master database.

References: <https://docs.microsoft.com/en-us/azure/sql-database/sql-database-manage-logins>

QUESTION NO: 9

You administer a Microsoft SQL Server failover cluster that contains two nodes named Node A and Node

B. A single instance of SQL Server is installed on the cluster.

An additional node named Node C has been added to the existing cluster.

You need to ensure that the SQL Server instance can use all nodes of the cluster.

What should you do?

A. Use Node A to install SQL Server on Node C.

B. A single instance of SQL Server is installed on the cluster.

An additional node named Node C has been added to the existing cluster.

You need to ensure that the SQL Server instance can use all nodes of the cluster.

What should you do?

Use Cluster Administrator to add a new Resource Group to Node B.

C. Use Node B to install SQL Server on Node C.

D. Create a ConfigurationFile.ini file from Node B, and then run the AddNode command-line tool on Node C.

E. Use Node B to install SQL Server on Node C.

F. Build a new cluster, shut down the current instance, and then migrate to the new cluster.

G. Create a ConfigurationFile.ini file from Node B, and then run the AddNode command-line tool on Node A.

ANSWER: D**Explanation:**

References:

<https://docs.microsoft.com/en-us/sql/database-engine/install-windows/install-sql-server-using-a-configuration-file>

QUESTION NO: 10 - (DRAG DROP)

DRAG DROP

You administer several Microsoft SQL Server servers. Your company has a number of offices across the world connected by using a wide area network (WAN).

Connections between offices vary significantly in both bandwidth and reliability.

You need to identify the correct replication method for each scenario.

What should you do? (To answer, drag the appropriate replication method or methods to the correct location or locations in the answer area. Each replication method may be used once, more than once, or not at all.)

Select and Place:

Replication Method	Scenario	
Transactional Replication	Multiple databases on the same low-latency subnet must allow applications to write changes locally, and these changes must be replicated to all related database.	
Peer-to-Peer Replication	An order summary table is repopulated once a week. This table must be replicated to all databases.	
Snapshot Replication	Field offices using unreliable connections keep a local copy of the product catalog and process orders locally. These orders must be periodically replicated to all other.	
Merge Replication	Information in an order-tracking database must be replicated across a low-latency connection as changes occur to multiple reporting databases	

ANSWER:

Replication Method	Scenario	
	Multiple databases on the same low-latency subnet must allow applications to write changes locally, and these changes must be replicated to all related database.	Peer-to-Peer Replication
	An order summary table is repopulated once a week. This table must be replicated to all databases.	Snapshot Replication
	Field offices using unreliable connections keep a local copy of the product catalog and process orders locally. These orders must be periodically replicated to all other.	Merge Replication
	Information in an order-tracking database must be replicated across a low-latency connection as changes occur to multiple reporting databases	Transactional Replication

Explanation:

Reference: <http://msdn.microsoft.com/en-us/library/ms151198.aspx>

QUESTION NO: 11

You administer a Microsoft SQL Server instance.

You need to configure a new database to support FILETABLES.

Which three actions should you perform? Each correct answer presents part of the solution.

- A. Disable FILESTREAM on the Database.
- B. Enable FILESTREAM on the Server Instance.

- C. Configure the Database for Partial Containment.
- D. Create a non-empty FILESTREAM file group.
- E. Enable Contained Databases on the Server Instance.
- F. Set the FILESTREAM directory name on the Database.

ANSWER: B D F

Explanation:

Reference: <http://msdn.microsoft.com/en-us/library/gg509097.aspx>

QUESTION NO: 12

You create an availability group named HaContoso that has replicas named Server01/HA, Server02/HA, and Server03/HA.

Currently, Server01/HA is the primary replica.

You need to ensure that the following requirements are met:

- Backup operations occur on Server03/HA.
- If Server03/HA is unavailable, backup operations occur on Server02/HA. ▪ Backup operations do not occur on Server01/HA.

How should you configure HaContoso?

- A.** Set the backup preference of HaContoso to Prefer Secondary.
Set the backup priority of Server02/HA to 20.
Set the backup priority of Server03/HA to 10.
- B.** Set the backup preference of HaContoso to Secondary only.
Set the backup priority of Server02/HA to 20.
Set the backup priority of Server03/HA to 10.
- C.** Set the backup preference of HaContoso to Secondary only.
Set the backup priority of Server02/HA to 10.
Set the backup priority of Server03/HA to 20.
- D.** Set the exclude replica of Server01/HA to true. Set the backup priority of Server02/HA to 10.
Set the backup priority of Server03/HA to 20.

ANSWER: C

Explanation:

References:

<https://docs.microsoft.com/en-us/sql/t-sql/statements/create-availability-group-transact-sql>

<https://docs.microsoft.com/en-us/sql/database-engine/availability-groups/windows/overview-of-always-on-availability-groups-sql-server>

QUESTION NO: 13

You administer a Microsoft SQL Server database. The database has a table named Customers owned by UserA and another table named Orders owned by UserB. You also have a stored procedure named GetCustomerOrderInfo owned by UserA. GetCustomerOrderInfo selects data from both tables.

You create a new user named UserC.

You need to ensure that UserC can call the GetCustomerOrderInfo stored procedure. You also need to assign only the minimum required permissions to UserC.

Which permission or permissions should you assign to UserC? Each correct answer presents part of the solution.

- A. The Select permission on Customers
- B. The Execute permission on GetCustomerOrderInfo
- C. The Take Ownership permission on Customers
- D. The Control permission on GetCustomerOrderInfo
- E. The Take Ownership permission on Orders
- F. The Select permission on Orders

ANSWER: B F**Explanation:**

Due to ownership chaining, you would only need to give Execute permissions to UserC to access the Customers table since UserA is the owner. You would also need to assign Select permission on the Orders table, as it is owned by UserB.

Note: How Permissions Are Checked in a Chain

When an object is accessed through a chain, SQL Server first compares the owner of the object to the owner of the calling object. This is the previous link in the chain. If both objects have the same owner, permissions on the referenced object are not evaluated.

References:

[https://technet.microsoft.com/en-us/library/ms188676\(v=sql.105\).aspx](https://technet.microsoft.com/en-us/library/ms188676(v=sql.105).aspx)

QUESTION NO: 14

Which of the following is a valid upgrade path for SQL Server 2012?

- A. SQL Server 2000 -> SQL Server 2012
- B. SQL Server 2000 -> SQL Server 2005 -> SQL Server 2012

- C. SQL Server 7 -> SQL Server 2012
- D. Oracle 11g -> SQL Server 2012

ANSWER: B

Explanation:

References: <https://technet.microsoft.com/en-us/library/ms143393%28v=sql.110%29.aspx> <https://technet.microsoft.com/en-us/library/ms143393%28v=sql.90%29.aspx>

QUESTION NO: 15

You develop a database for a travel application.

You need to design tables and other database objects.

You create a stored procedure.

You need to supply the stored procedure with multiple event names and their dates as parameters.

What should you do?

- A. Use the CAST function.
- B. Use the DATE data type.
- C. Use the FORMAT function.
- D. Use an appropriate collation.
- E. Use a user-defined table type.
- F. Use the VARBINARY data type.
- G. Use the DATETIME data type.
- H. Use the DATETIME2 data type.
- I. Use the DATETIMEOFFSET data type.
- J. Use the TODATETIMEOFFSET function.

ANSWER: E