

# DUMPS ARENA

**IBM SPSS Statistics Level 1 v2**

**IBM C2090-011**

**Version Demo**

**Total Demo Questions: 10**

**Total Premium Questions: 55**

**Buy Premium PDF**

**<https://dumpsarena.co>**

**[sales@dumpsarena.co](mailto:sales@dumpsarena.co)**

**sales@dumpsarena.co**  
**dumpsarena.co**

**QUESTION NO: 1**

What type of graph would you use to see the distribution of a scale variable?

- A. Bar chart
- B. Pie chart
- C. Histogram
- D. Scatter plot

**ANSWER: C**

**QUESTION NO: 2**

When you read data stored in an Excel file via File ... Open ... Data, you may need to specify which options? (Choose three.)

- A. Read variable names from the first row of data
- B. Read a Range of cells
- C. Specify the Worksheet to read/import
- D. Number of Worksheets to read/import

**ANSWER: A B C**

**QUESTION NO: 3**

Which feature would you use to create a new variable whose values represent the number of times that each respondent answered Strongly Agree to a series of satisfaction questions?

- A. Compute Variable
- B. Visual Binning
- C. Count Values within Cases
- D. Rank Cases

**ANSWER: C**

**QUESTION NO: 4**

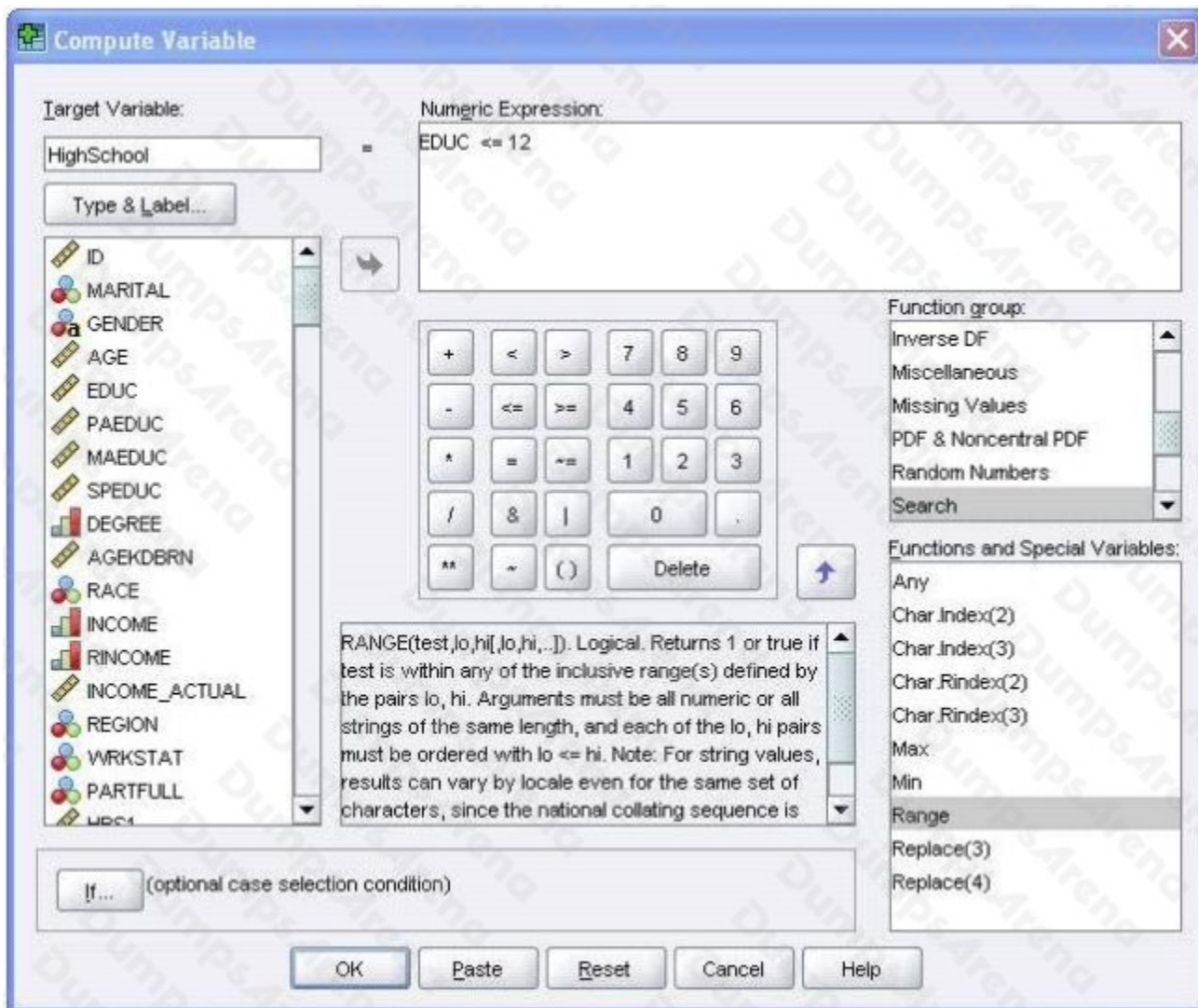
As of PASW Statistics 17, options for exporting tables to Excel files include which of the following? (Choose all that apply.)

- A. Create a new worksheet in an existing Microsoft Excel file
- B. Add to an existing worksheet
- C. Create a new Microsoft Excel file
- D. Export all layers of a pivot table

**ANSWER: A B C D**

### QUESTION NO: 5

Using the Compute Variable dialog below, the target variable HighSchool will have the following values. (Choose two.)



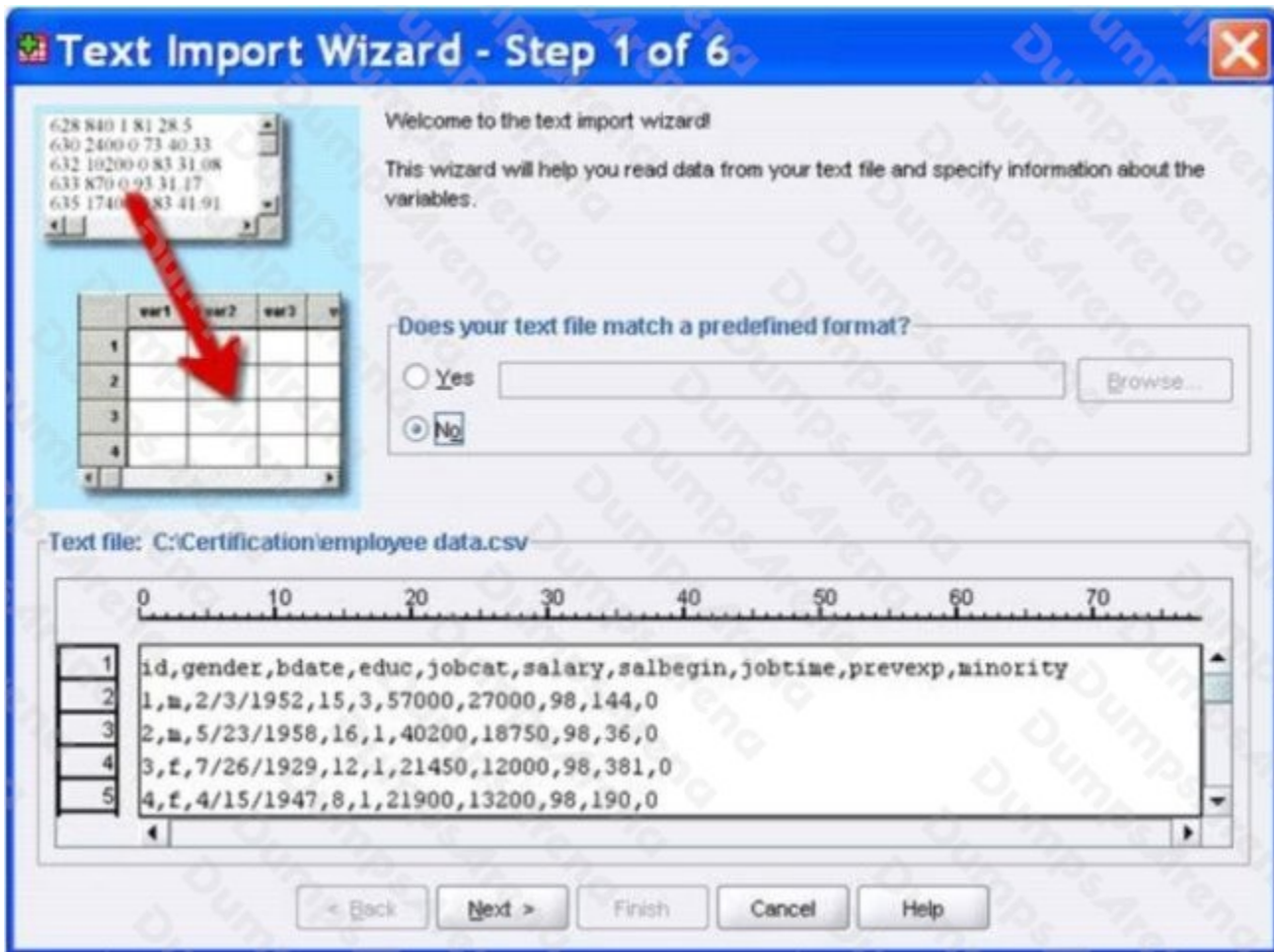
- A. Value 1 if EDUC is less than or equal to 12

- B. System-missing value if EDUC is greater than 12
- C. The same value as EDUC if EDUC is less than or equal to 12
- D. Value 0 if EDUC is greater than 12

ANSWER: A B

### QUESTION NO: 6

The text file shown in the figure below is an example of a fixed format text file.

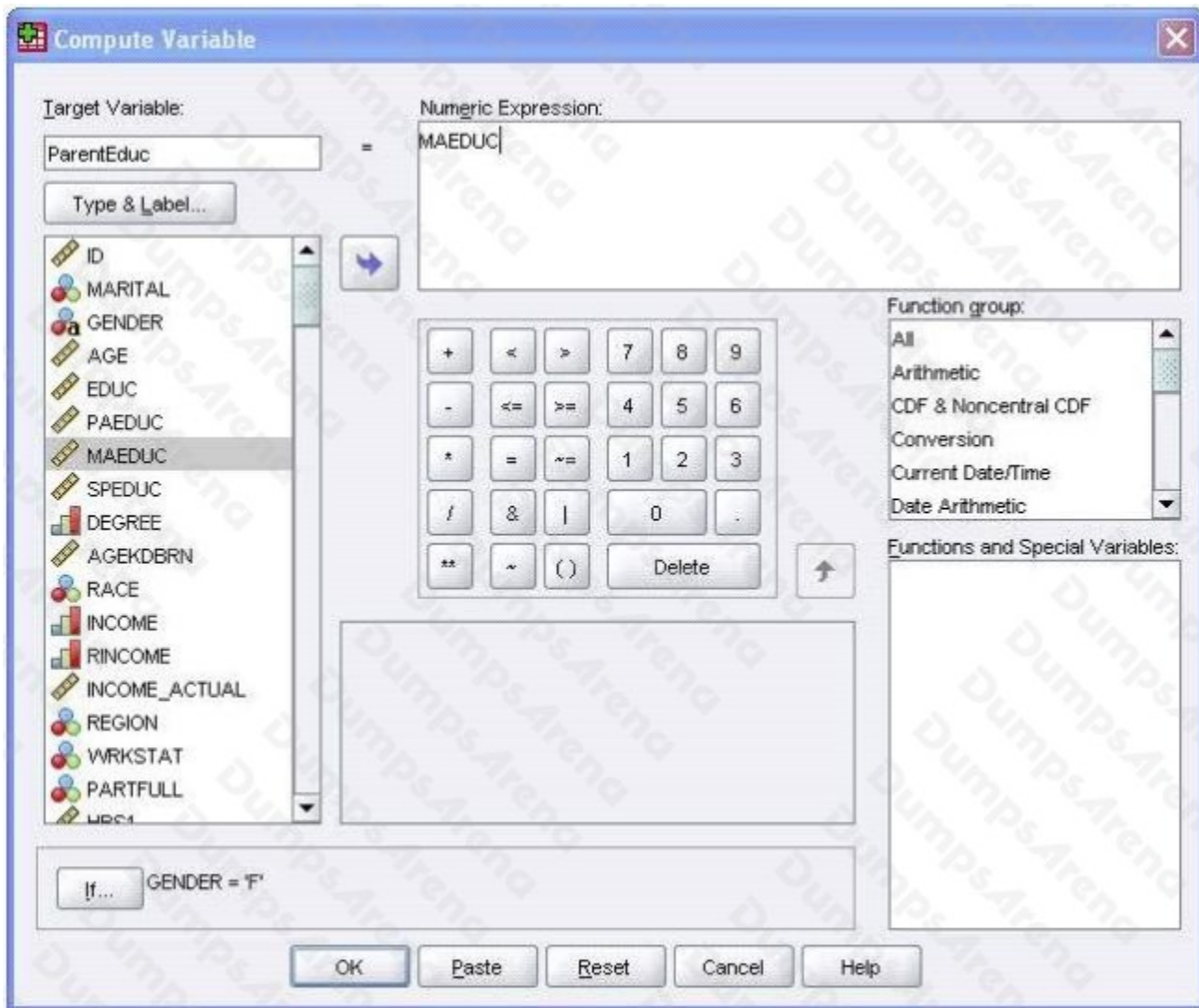


- A. True
- B. False

ANSWER: B

**QUESTION NO: 7**

The Compute Variable dialog shown below performs which of the following operations? (Choose two.)



- A. Sets the value of ParentEduc equal to the value of MAEDUC.
- B. Sets the value of ParentEduc equal to the value of MAEDUC if the value of GENDER is F.
- C. Sets the value of ParentEduc equal to the system-missing value if the value of GENDER is blank.
- D. Sets the value of ParentEduc equal to the user-missing value if the value of GENDER is blank.

**ANSWER: B C**

**QUESTION NO: 8**

In order to import data from database sources such as Access and Oracle into IBM SPSS Statistics, you must first export the data from the database to a tad file and then import this tad file into IBM SPSS Statistics?

- A. True
- B. False

**ANSWER: B**

**QUESTION NO: 9**

Consider the variable AGE in the data file below. You have been asked to use this in a cross-tabulation with GENDER. How would you proceed? (Choose two.)

	ID	MARITAL	GENDER	AGE	EDUC	PAEDUC	MAEDUC	SPEDU
1	1	1	F	52	9	9	10	
2	2	1	F	43	14	13	1	
3	3	5	M	52	14	97	12	
4	4	3	M	53	14	1	3	
5	5	5	F	34	17	97	18	
6	6	5	M	33	16	8	12	
7	7	5	M	24	14	12	12	
8	8	5	M	22	14	14	97	
9	9	5	M	19	12	14	11	
10	10	5	M	26	14	11	12	
11	11	3	M	74	12	0	0	
12	12	2	F	58	12	5	6	
13	13	1	M	32	10	10	0	
14	14	1	M	40	18	8	6	
15	15	5	M	42	14	97	16	

- A. Go to Analyze ...Descriptive Statistics ... Crosstabs .....specify the variables and click OK
- B. Use Visual Binning to create a categorical equivalent for AGE and proceed as per Option A above.
- C. Use Visual Binning to create a categorical equivalent for AGE and run a Frequencies
- D. Use Recode into Different Variables ...to create a categorical equivalent for AGE and proceed as per Option A. above

ANSWER: B D

QUESTION NO: 10

Which interpretation is correct for the Independent Samples T-Test table shown below?

		Levene's Test for Equality of Variances		t-test for Equality of Means		
		F	Sig.	t	df	Sig. (2-tailed)
WWW HOURS PER WEEK	Equal variances assumed	15.182	.000	-4.902	1699	.000
	Equal variances not assumed			-4.866	1605.394	.000

- A. We did not meet the assumption of homogeneity of variance; however our two groups differed on the number of WWW HOURS PER WEEK.
- B. We did meet the assumption of homogeneity of variance and our two groups differed on the number of WWW HOURS PER WEEK.
- C. We did not meet the assumption of homogeneity of variance and our two groups did not differ on the number of WWW HOURS PER WEEK. We did meet the assumption of homogeneity of variance; however our two groups did not differ on the number of WWW HOURS PER WEEK.

ANSWER: A