

DUMPS ARENA

TMap Next Foundation

Exin TMPF

Version Demo

Total Demo Questions: 10

Total Premium Questions: 60

Buy Premium PDF

<https://dumpsarena.co>

sales@dumpsarena.co

sales@dumpsarena.co
dumpsarena.co

Topic Break Down

Topic	No. of Questions
Topic 1, Volume A	29
Topic 2, Volume B	31
Total	60

QUESTION NO: 1

See the figure below:

Screen 2.6	Always Wrong				W/V	W/V	Always Valid	
	Value field	Too many symbols	Too few symbols	Wrong symbols	Value outside of range	Leave field empty	Value zero	Min. value
Bank group	> 5	< 5	- num	not applicable	EM	EM	00001	55555
Expiry date	> 4	< 4	- num	- **01-**12	OK	EM	0001	9912
Postcode	> 6	< 6	- alphanum	- GGGGXXX	EM	EM	1000AA	9999ZZ
Pin ind	> 1	< 1	- alpha	- (Y,N)	EM	EM	Y	N

Of which test design technique is this an example?

- A. Data Combination Test
- B. Data Cycle Test
- C. Semantic Test
- D. Syntactic Test

ANSWER: D

QUESTION NO: 2

What is not an element of a test case in relation to the system behavior to be tested?

- A. action
- B. defect
- C. initial situation
- D. predicted result

ANSWER: B

QUESTION NO: 3

See the definition below: The ease with which the information system can be adapted to new requirements of the user and the changing external environment, or to correct errors.

Of which quality characteristic is this the definition?

- A. manageability
- B. flexibility
- C. maintainability

ANSWER: C

QUESTION NO: 4

What is not a general step when specifying test cases?

- A. allocating the test techniques
- B. identifying test situations
- C. creating the test script
- D. establishing the starting point

ANSWER: A

QUESTION NO: 5

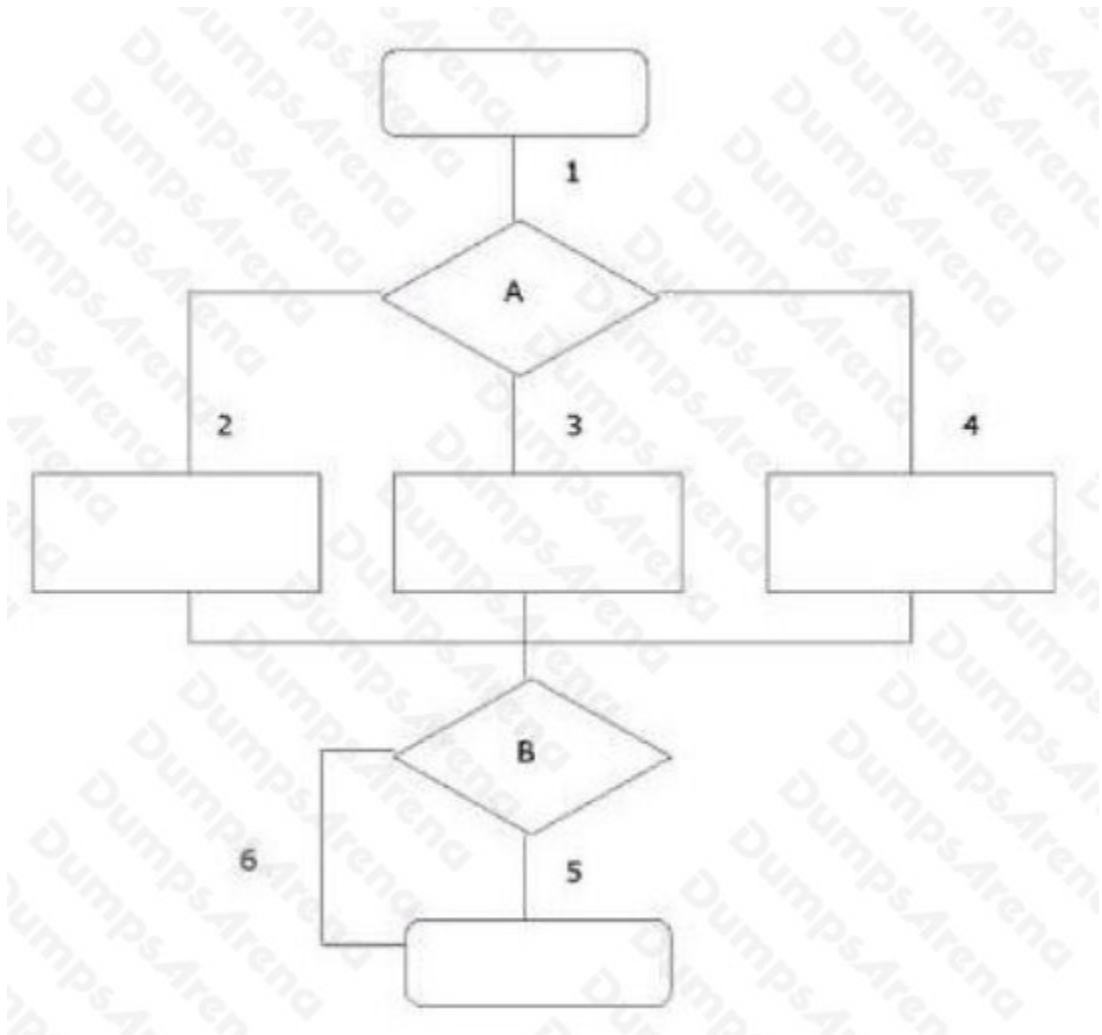
During the test execution of a large customer registration system, the system went down for several times. Although there were no test cases described the tester concluded that the continuity was poor. Which testing method is described here?

- A. dynamic explicit testing
- B. dynamic implicit testing
- C. static testing

ANSWER: B

QUESTION NO: 6

See the illustration below:



What is the minimum number of logical test cases generated by the use of the Process Cycle Test if the coverage type paths test depth level 2 is used?

- A. 3
- B. 5
- C. 6
- D. 9

ANSWER: C

QUESTION NO: 7

What is the correct description of the term est level?

- A. the information that defines the required system behavior
- B. a group of test activities with the attention of checking the information system in respect of a number of correlated (part aspects of) quality characteristics
- C. a group of test activities that are managed and executed collectively

ANSWER: C

QUESTION NO: 8

See the following specification:

IF	it is cold
	THEN put on your jacket
ENDIF	
IF	it rains and is not windy
	THEN you use an umbrella
ELSE	
	you do not use an umbrella
ENDIF	

How many test situations are produced when the coverage type decision points condition/decision coverage is used?

- A. 2
- B. 3
- C. 4
- D. 8

ANSWER: C

QUESTION NO: 9

A structured testing approach is characterized by:

- ☞ providing concrete footholds

- ⇒ covering the full scope and describing the complete range of relevant aspects
- ⇒ providing a structure, so that it is clear what exactly by whom, when and in what sequence has to be done

What is the fourth characteristic?

- A.** it delivers insight into and advice on any risks in respect of the quality of the tested system
- B.** managing test activities in the context of time, money and quality
- C.** the testing is on the critical path of the total development, as briefly as possible, so that the total lead time of development is shortened
- D.** to find defects at an early stage

ANSWER: B

QUESTION NO: 10

See the specification below:

IF A AND (B OR C)

THEN error message

ENDIF

How many logical test cases are distinguished if Semantic Testing with coverage type decision points condition/decision coverage is used?

- A.** 2
- B.** 3
- C.** 4
- D.** 8

ANSWER: A