

# DUMPS ARENA

## SCNS Tactical Perimeter Defense

Exin SCNS

Version Demo

Total Demo Questions: 15

Total Premium Questions: 228

Buy Premium PDF

<https://dumpsarena.co>

[sales@dumpsarena.co](mailto:sales@dumpsarena.co)

[sales@dumpsarena.co](mailto:sales@dumpsarena.co)  
[dumpsarena.co](https://dumpsarena.co)

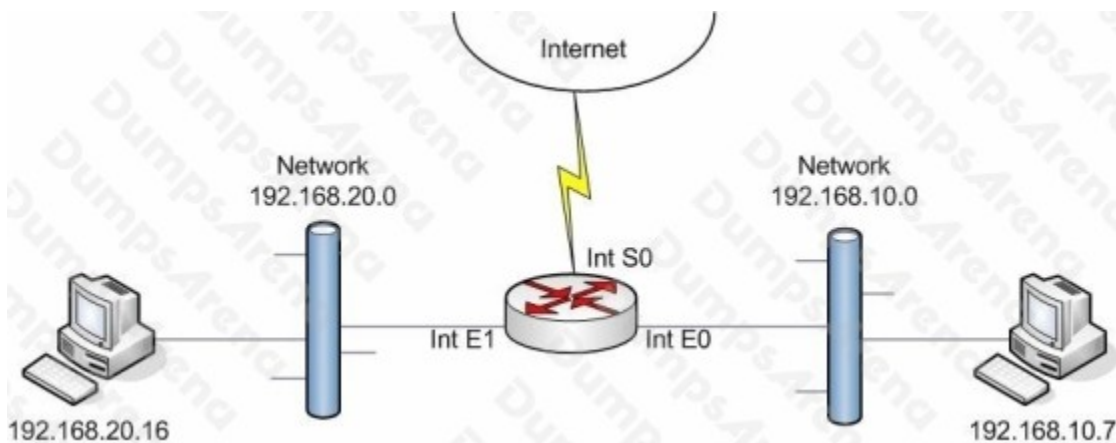
## Topic Break Down

Topic	No. of Questions
Topic 1, Volume A	111
Topic 2, Volume B	117
<b>Total</b>	<b>228</b>

**QUESTION NO: 1**

The exhibit shows a router with three interfaces E0, E1 and S0. Interfaces E0 and E1 are connected to internal networks 192.168.10.0 and 192.168.20.0 respectively and interface

S0 is connected to the Internet.



The objective is to allow host 192.168.10.7 access to the Internet via ftp and deny access to the Internet to everyone else while allowing them to access resources amongst themselves. From the following, select all the access list statements that are required to make this possible.

- A. access-list 153 permit tcp 192.168.10.7 0.0.0.0 any eq ftp
- B. access-list 21 permit ip 192.168.10.7 0.0.0.0 any eq ftp
- C. access-list 21 deny 0.0.0.0 255.255.255.255
- D. int S0, ip access-group 21 out
- E. int S0, ip access-group 153 out
- F. int E1, ip access-group 153 in

**ANSWER: A E**

**QUESTION NO: 2**

During the configuration of your newly installed ISA Server 2006, you are creating new rules. Which three of the following answers are used to create a protocol rule in ISA Server

2006?

- A. Filter

- B. Name
- C. Direction
- D. Action
- E. Network

**ANSWER: B D E**

### QUESTION NO: 3

You have decided to install Snort on your Windows Server 2003 and are making changes to the default configuration file. You see the following two lines:

```
include classification.config
```

```
include reference.config
```

What should these two lines read, after you make your changes, on a default installation?

- A. include C:\Snort\etc\classification.config
- B. include C:\Snort\etc\reference.config
- C. include \classification.config
- D. include \reference.config
- E. include //classification.config
- F. include //reference.config

**ANSWER: A B**

### QUESTION NO: 4

You are a host in a network segment that has IP addresses in the range of

168.16.1~192.168.31.254. You need to create an access control list that will filter your segment of addresses. Which of the following is the wildcard mask that will be used to filter your network segment?

- A. 10.0.16.1/20
- B. 0.0.16.254
- C. 255.240.0.0

- D. 0.0.240.0
- E. 0.0.15.255

**ANSWER: E**

#### QUESTION NO: 5

You are configuring a Cisco Router, and are creating Access Control Lists as part of the security of the network. When creating Wildcard Masks, which of the following rules apply?

- A. If the wildcard mask bit is a 1, then do not check the corresponding bit of the IP address for a match.
- B. If the wildcard mask bit is a 0, then do not check the corresponding bit of the IP address for a match.
- C. If the wildcard mask bit is a 1, then do check the corresponding bit of the IP address for a match.
- D. If the wildcard mask bit is a 0, then do check the corresponding bit of the IP address for a match.
- E. To create a Wildcard Mask, always take the inverse of the Subnet Mask.

**ANSWER: A D**

#### QUESTION NO: 6

Recently, you have made many changes to your ISA Server 2006 firewall. You are concerned about saving these changes. What is the part of ISA Server used for saving your configuration changes?

- A. The built-in feature to export your configuration to an XLS file.
- B. The Copy Configuration to CD feature.
- C. The built-in feature to export your configuration to an XML file.
- D. The image burning feature set.
- E. The option to configure the server to utilize RAID 5.

**ANSWER: C**

#### QUESTION NO: 7

As you increase the layers of security in your organization, you must watch the network behavior closely.

How can a firewall have a negative impact on the performance of your network?

- A. It can authorize sensitive information from the wrong host
- B. It can block needed traffic
- C. It can decrypt secure communications that were supposed to get past the firewall encrypted
- D. It can restrict bandwidth based on QoS
- E. It can filter packets that contain virus signatures

**ANSWER: B**

#### **QUESTION NO: 8**

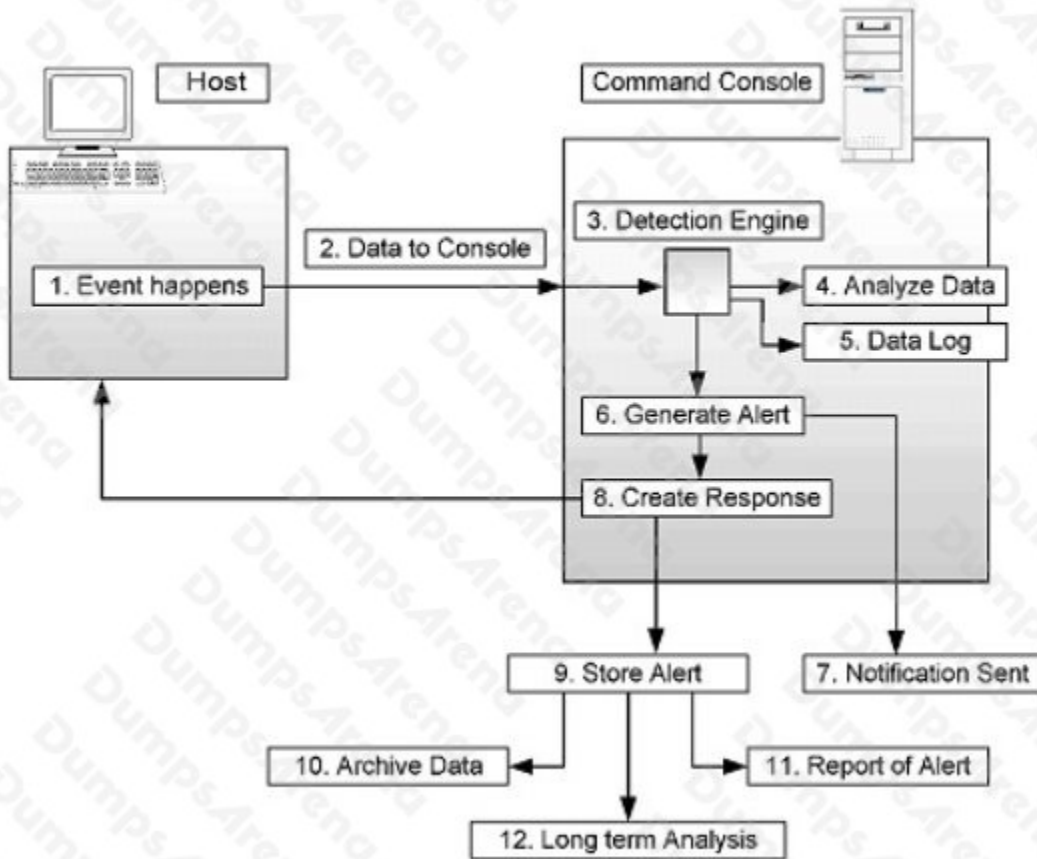
You have just installed a new firewall and explained the benefits to your CEO. Next you are asked what some of the limitations of the firewall are. Which of the following are issues where a firewall cannot help to secure the network?

- A. Poor Security Policy
- B. Increased ability to enforce policies
- C. End node virus control
- D. Decreased ability to enforce policies
- E. Social Engineering

**ANSWER: A C E**

#### **QUESTION NO: 9**

What step in the process of Intrusion Detection as shown in the exhibit would an e-mail be delivered to the security admin if an attack were presently taking place?



- A. 3
- B. 6
- C. 7
- D. 8
- E. 11

ANSWER: C

#### QUESTION NO: 10

During your configuration of Snort, you wish to use priority levels in your rules. What are the three options in the Snort rule that can be used to define the Priority level of the rule?

- A. High

- B. Medium
- C. Low
- D. First
- E. Second
- F. Third

**ANSWER: A B C**

#### **QUESTION NO: 11**

You are evaluating the security of different wireless media, and are considering the use of microwave technology. What are the two types of microwave transmissions used in commercial wireless networking?

- A. Terrestrial
- B. Line of sight
- C. Diffused
- D. Integrated
- E. Satellite

**ANSWER: A E**

#### **QUESTION NO: 12**

You have just installed a new ISA Server 2006, and are monitoring the new deployment. In the Monitoring Details pane, which tab will provide you with visual displays of current monitoring information?

- A. Summary
- B. Sessions
- C. Dashboard
- D. Reports
- E. Alerts

**ANSWER: C**

**QUESTION NO: 13**

You are configuring the Intrusion Detection System in your network, and a significant part of the strategy is to use custom Snort rules. When setting rules for Snort, what rule option keyword would you use to match a defined value in the packets payload?

- A. Msg
- B. Ttl
- C. Id
- D. Flags
- E. Content

**ANSWER: E****QUESTION NO: 14**

To verify that your PPTP implementation is working as you intended, you sniff the network after the implementation has been completed. You are looking for specific values in the captures that will indicate to you the type of packets received. You analyze the packets, including headers and payload. PPTP works at which layer of the OSI model?

- A. Layer 1
- B. Layer 2
- C. Layer 3
- D. Layer 4
- E. Layer 5

**ANSWER: B****QUESTION NO: 15**

Your company has recently become security conscious and wishes to protect its electronic assets.

What is the first thing you should have in place before configuring rules for your company's firewall?

- A. A Security Policy
- B. AN IDS
- C. A DNS server

D. An Email server

E. A WINS server

**ANSWER: A**